

# Newcastle Power Station Project

## Environmental Impact Statement

AGL has undertaken a comprehensive assessment of the potential impacts of the Newcastle Power Station Project. A brief summary of some of the environmental assessments and mitigation strategies to manage any concerns for the Project are summarised below:



### Visual Impact

Visual impacts would be moderate to low from most viewpoints.

AGL's selection of the site for the proposed Newcastle Power Station was made partially because of the natural visual shielding offered by the surrounding environment including being constructed in an area zoned for industrial uses.

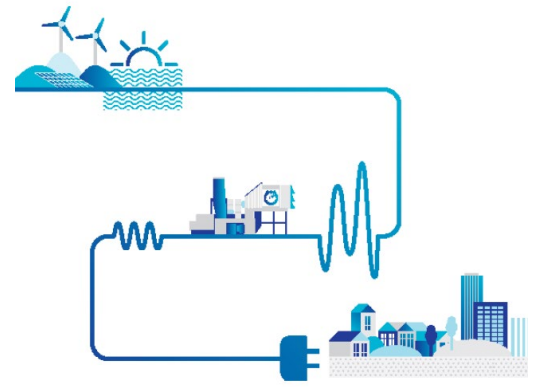
It is expected that moderate to high visual impacts will occur at Oakfield Road, along Pacific Highway. AGL will implement avoidance and mitigation measures such as landscape screening to reduce the impact of the project on visual amenity.



Figure 1: Reciprocating engine technology as seen from Pacific Highway, Tomago.



Figure 2: Gas turbine technology as seen from Pacific Highway, Tomago.



### Aboriginal Heritage

Archaeological surveys, test excavations and consultation with the Aboriginal community found the overall impact is low.

The Aboriginal Heritage Assessment included:

- archaeological surveys,
- test excavations and
- consultation with Aboriginal communities.

The project is on the boundary of two Local Aboriginal Land Councils (LALC): Awabakal (south of the Hunter River) and Worimi (north of the Hunter).

Some artefacts were found in disturbed areas during field investigations that were identified as having low archaeological significance.

The Office of Environment and Heritage's Aboriginal Heritage Information Management System database did not identify any sites within the Project area, and there were five sites identified in the vicinity of the Project.

No comments were received from the registered Aboriginal parties on the cultural value of the Project area, it has been concluded in the Aboriginal Cultural Heritage Assessment Report that the overall significance of the Project to local Aboriginal people and communities is low.

To minimise the potential of Project related activities disturbing Aboriginal cultural heritage sites, AGL will develop management procedures in consultation with the appropriate LALCs to ensure the protection of Aboriginal cultural heritage sites, features or artefacts that might be unearthed during construction.



## Socio Economic

Direct employment of approximately 300 people at the peak of construction with about 23 staff during operation.

### *Employment*

The Newcastle Power Station will employ about 300 people at the peak of construction with up to 900 indirect jobs. During the proposed operational life of around 25-years, approximately 23 full-time staff, including routine maintenance workers, would be required operating on shifts.

### *Local industry participation*

A large proportion of the Project's operating expenditure would flow directly to regional contractors and suppliers for raw materials, utility purchases, and local service suppliers. The Project would present opportunities for upskilling and training of the workforce, as well as seeking to offer scholarships and other training opportunities for the local community.

### *Community*

AGL's community approach would continue supporting initiatives aimed at community development, consistent with its community engagement philosophy.

## Traffic Impacts

Negligible effect of traffic on existing road network performance.

Construction related traffic on the Pacific Highway, Tomago Road and Old Punt Road would be for the duration of construction (2021 -2022) and would be generated by the delivery of plant, equipment and materials (estimated to be up to 80 heavy vehicles daily), and up to 300 construction workers travelling to and from site daily.

A new access road into the site would be constructed to provide the main access point to the power station site.

The main components of the power station would be assembled overseas and delivered using oversize haulage vehicles which require permits and escorts.

During operation, the power station would generate regular daily staff traffic and heavy vehicle movements as required for the removal of waste process water and the delivery of diesel.

Most light traffic movements would be from the 23 regular operational and maintenance staff.

### To know more

Contact AGL on:

Email: [AGLCommunity@agl.com.au](mailto:AGLCommunity@agl.com.au)

Phone: 1800 039 600

