

Fact Sheet

Dalton Power Project

April 2012



Flora and Fauna

AGL has undertaken a thorough assessment of the potential impacts of the Dalton Power Project on the flora and fauna. The Project includes the dedication and management, in perpetuity, of a very large conservation offset area, that will protect important vegetation communities.

Potential Flora and Fauna Impacts

The Dalton Power Project will have a limited impact on the local flora and fauna due to the site having been previously cleared for agricultural uses.

Despite this, construction will require some vegetation clearing including:

- › 6 hectares (approx) of Box Gum Woodland which is listed under State legislation
- › 9 hectares (approx) of Native Grassland which is listed under Commonwealth legislation

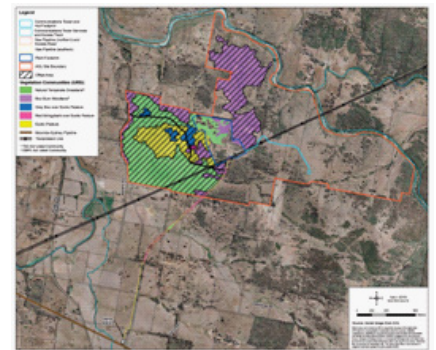
As part of the project, AGL has proposed the establishment of a conservation offset area covering some 183 hectares. It includes important vegetation communities that will be placed into a conservation regime and managed for environmental purposes in perpetuity.

The proposed offset areas are illustrated in the adjacent map.

- › Green is natural temperate grassland
- › Purple is box gum woodland, and,
- › Orange indicates exotic pasture and potential natural temperate grassland that will be rehabilitated.

AGL will enter into a Conservation Agreement with the NSW Office of Environment and Heritage. This agreement will involve, but not be limited to:

- › Exclusion of grazing through stock proof fencing;
- › Weed removal and control;
- › Revegetation or assisted regeneration of disturbed areas;
- › Retention of fallen timber, hollow logs, leaf litter, rocks and other habitat resources;
- › Control of feral animals, where appropriate and practical;
- › Erosion control, where appropriate and practical;
- › Signage to indicate the offset area and to disallow access;
- › Maintenance of existing fencing to control grazing pressures; and
- › Ecological monitoring and reporting of biodiversity condition and effectiveness of mitigation measures over time.



AGL will also be allocating another 10 hectares of land for conservation. These are coloured blue (grey box over exotic pasture) and red (red stringybark over exotic pasture).

AGL recently met with local members of the Jerrawa Creek Landcare Group to discuss how to manage the offset and conservation area for the best ecological outcome. The Group shared their experience of restoring an area of land that has been in conservation for 10 years where the change in the land and increase in biodiversity was significant. It is AGL's goal to achieve equally significant outcomes.

Energy in
action.®



AGL Energy Limited
ABN 74 155 061 375

www.agl.com.au/dalton

For more information, please contact:

Neil Cooke
Manager, Power Development
Direct: 02 9921 2155
Mobile: 0402 059 855
Email: ncooke@agl.com.au

Karen Winsbury
Media Manager
Direct: 03 8633 6388
Mobile: 0408 465 479
Email: kwinsbury@agl.com.au

Additional threatened species surveys undertaken

As part of the project assessment process, AGL also recently commissioned targeted surveys to assess the potential for the following threatened species to occur within the project area:

- › Silky Swainson-pea (*Swainsona sericea*);
- › Button Wrinklewort (*Rutidosis leptorrhynchoides*);
- › Yass Daisy (*Ammobium craspedioides*);
- › Hoary Sunray (*Leucochrysum albicans* var. *tricolor*);
- › Pink-tailed Worm-lizard (*Aprasia parapulchella*);
- › Striped Legless Lizard (*Delma impar*); and
- › Golden Sun Moth (*Synemon plana*).

The surveys confirmed that none of these species occur on the Dalton Power Project site.

Energy in
action.®



AGL Energy Limited
ABN 74 155 061 375

www.agl.com.au/dalton

For more information, please contact:

Neil Cooke
Manager, Power Development
Direct: 02 9921 2155
Mobile: 0402 059 855
Email: ncooke@agl.com.au

Karen Winsbury
Media Manager
Direct: 03 8633 6388
Mobile: 0408 465 479
Email: kwinsbury@agl.com.au