



PV Inverters from the World's  
Largest Power Electronics Company

## Delta RPI: 3kW, 4kW, 5kW

Grid-connect PV Inverter

RPI Home Series: H3A, H4A, H5A

### Product Features

- Transformerless design
- Dual MPP trackers
- Wide voltage range
- Class-leading peak efficiency of 97.5%
- IP65 protection level
- Power limiting options available
- Built-in AC/DC isolation switch
- Aluminium die-cast enclosure
- LCD display
- Fanless design
- Easy installation
- Wall mountable



Delta offers a 10 year warranty as standard across its entire range of PV inverters in Australia and New Zealand. This warranty is backed by the world's largest power electronics company and a global leader in electronics manufacturing.





### High Efficiency Performance

Class-leading efficiency up to 97.5% for 3-5kW systems, using advanced transformerless topology developed by Delta, the global leader in power electronics. The ultra-high efficiency is consistent across the entire voltage and power range, providing reliable and stable performance.



### Wide Working Voltage Range

Ultra-wide operating voltage range from 100-550V allows greater flexibility in string configuration. Even under harsh environmental conditions, the wide MPPT range makes it easy to configure PV arrays to stay within the maximum power operating range.



### Dual Maximum Power Point Trackers

Two MPPTs optimise power harvesting from separate arrays with different pitch and orientation. The inverter will track the optimal power point for each array independently. Alternatively, both inputs can be paralleled and the inverter used in single MPPT mode.



### Asymmetrical Loading

Symmetrical and asymmetrical loading can be supported, for greater design flexibility and performance. The ability to handle unbalanced DC inputs allows different sized strings to be configured without compromising the system performance.



### AC/DC Safety Switch

To ensure safety during installation, the inverter is equipped with a mechanical AC/DC switch that is designed to manually disconnect both AC and DC power sources simultaneously. At this point, the inverter is completely powered off to prevent the possibility of electric shock.



### High Quality Design

Revolutionary light and compact design, with a robust die-cast case to ensure quality and durability. Each inverter satisfies IP65 protection level and rigorous reliability testing, such as highly accelerated life testing (HALT).



### Communication Options

The inverter is equipped with a standard RS485 communication port and a digital input interface, which provide options to connect an external third party zero export control device.



### Simple installation

The lightweight, compact design and unique wall bracket allow easy and cost efficient installation. Universal multi-contact MC4® DC connectors allow fast and safe connections.



### Passive Cooling

Innovative heat-sink design for passive cooling reduces the operating temperature of the inverter through a natural convection process, eliminating the need for fan and filter maintenance. The enhanced cooling helps to protect sensitive electrical components and extends the life of the inverter.



### Power Limiting

Able to select and lock different AC output power settings during installation to meet specific grid requirements for greater versatility in application.



### External Alarm

Compliant with IEC62109, the inverter is equipped with an internal dry contact, which can be configured to trigger in case of an earth fault.



### Power Quality

Various active and reactive power factor modes. Constant cos (φ) is the most common setting for Australia.

## About Delta

Delta is the world's largest power electronics company and a leading manufacturer of switching power supplies, telecom power supplies, DC brushless fans, thermal management solutions, industrial automation, datacentre solutions, networking, and renewable energy products. With over 40 years' experience in manufacturing, Delta specialises in OEM and ODM, meaning it designs and manufactures electrical products for some of the largest electronics brands in the world.

Headquartered in Taiwan, Delta's entire global operation consists of over 153 offices, 38 manufacturing plants, 60 R&D centres, and 70,000 employees dedicated to the pursuit of innovative and efficient technologies that deliver the brand's promise of: "Smarter. Greener. Together."

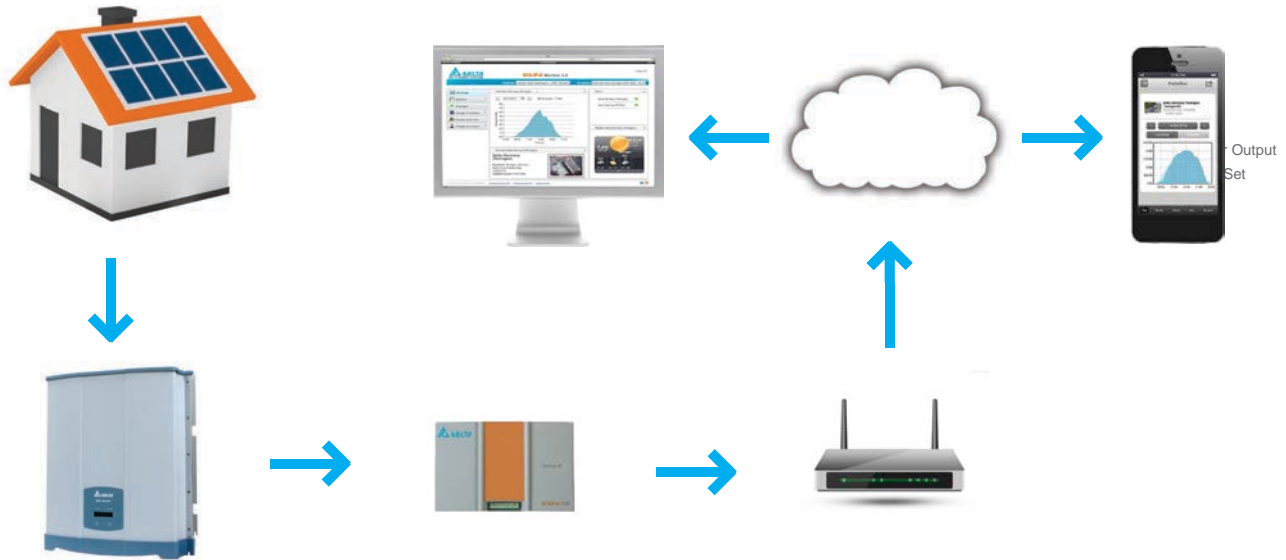
Delta's vision for a greener, cleaner, more energy-efficient future, is inspiring people to change the way they manage and consume energy. Leading by example, Delta's green manufacturing processes, recycling and waste management programs and the construction of Diamond and Gold LEED certified green buildings has earned its place in the Dow Jones Sustainability™ World Index (DJSI World) for the last four years.

Delta began developing its solar inverters at its German research and development centre almost 20 years ago and with their unsurpassed experience in power electronics, have been able to achieve some of the best in efficiency, reliability and power conversion rates in the industry, with leading efficiencies including:

- The world's first server power supply certified as 80 Plus Titanium, with over 96% efficiency,
- PV inverters at up to 98.7% efficiency,
- Switching power supplies at over 90% efficiency, and
- Telecom power with up to 97.5% efficiency.

## Smart Logging & Monitoring Interface

Relevant system information and settings are displayed on the inverter's compact LCD graphics display. An easy push button interface allows access to important data stored within the internal data logger. More detailed and up-to-date information on the inverter's performance can be obtained by connecting an external monitoring device. The built-in RS485 communication interface will transfer the relevant inverter data to the connected monitoring interface from which it can be accessed through the internet or a suitable mobile phone app. Information about the system's electricity generation will be uploaded automatically at regular intervals and stored for up to 10 years.



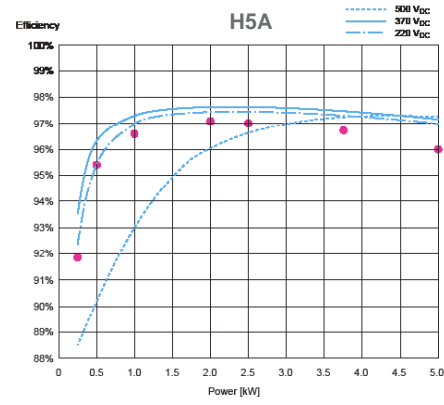
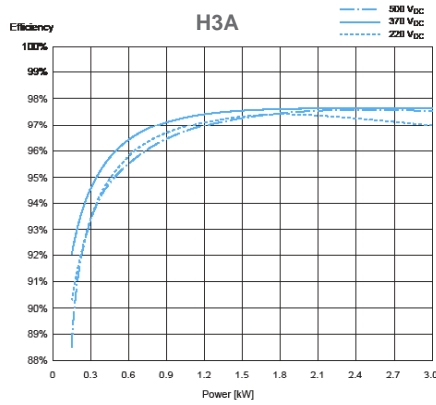
## Warranty & Technical Support

Delta was the first brand to offer a 10 year warranty as standard across its entire range of PV inverters in Australia and New Zealand. This warranty is backed by the world's largest power electronics company, a global leader in electronics manufacturing.

Delta's state-of-the-art production facilities and quality control ensure the highest level of reliability and longevity of our inverters, while our local office and dedicated service team provide the very best technical and engineering support.



## Inverter Efficiency



## Technical Specifications

### Input (DC)

	H3A	H4A	H5A
Maximum recommended PV power	3,780W	5,000W	6,300W
Maximum input voltage	600V	600V	600V
Operating voltage range	100 ~ 550V	100 ~ 550V	100 ~ 550V
MPP voltage range - symmetrical	160 ~ 500V	180 ~ 500V	220 ~ 500V
MPP voltage range - asymmetrical	320 ~ 500V	266 ~ 500V	291 ~ 500V
Start-up voltage	100V	100V	100V
Nominal voltage	350V	350V	350V
MPP tracker	2	2	2
Maximum asymmetry (%)	100 / 0	80 / 20	70 / 30
Maximum input current (DC1 / DC2)	10A / 10A	12A / 12A	12A / 12A
Maximum input current (total MPPT)	20A	24A	24A
Connection type	2 pairs MC4 (1 / 1)	2 pairs MC4 (1 / 1)	2 pairs MC4 (1 / 1)

### Output (AC)

Maximum apparent power	3,000VA	4,000VA	5,000VA
Power limiting options	2,490W / 2,990W	N/A	4,990W
Maximum output current	13.9A	18.2A	23.2A
Rated voltage	230V	230V	230V
Operating voltage range	-20% / +22%	-20% / +22%	-20% / +22%
Operating frequency range	50 / 60Hz ± 5Hz	50 / 60Hz ± 5Hz	50 / 60Hz ± 5Hz
Power factor (adjustable)	0.8 ind ~ 0.8 cap	0.8 ind ~ 0.8 cap	0.8 ind ~ 0.8 cap
Total Harmonic Distortion (THD)	<3%	<3%	<3%
Night time loss	<1W	<1W	<1W

### Efficiency

Peak efficiency	97.50%	97.50%	97.50%
Euro efficiency	96.80%	97.00%	96.80%

### Information

DC Switch	Yes	Yes	Yes
Communication port	RS485 / Dry contact	RS485 / Dry contact	RS485 / Dry contact
Display	LCD 16 characters x 2	LCD 16 characters x 2	LCD 16 characters x 2

### Certification

	VDE-AR-N 4105   AS4777   AS3100 IEC 62109-1/-2   CE Compli EN 61000-6-2   EN61000-6-3
--	--

### General Data

Operating temperature range	-25 ~ 60°C	-25 ~ 60°C	-25 ~ 60°C
Protection level	IP65	IP65	IP65
Cooling	Natural convection	Natural convection	Natural convection
Dimensions (W x H x D)	475 x 415 x 155mm	475 x 415 x 155mm	475 x 415 x 155mm
Weight	21kg	21kg	21kg
Delta part number	RPI302N55E0100	RPI402N55E0100	RPI502N55E0100

### Delta Energy Systems Australia

20-21 / 45 Normanby Rd, Notting Hill VIC 3168  
 (03) 9543 3720  
 info@delta-es.com.au  
 www.delta-es.com.au

