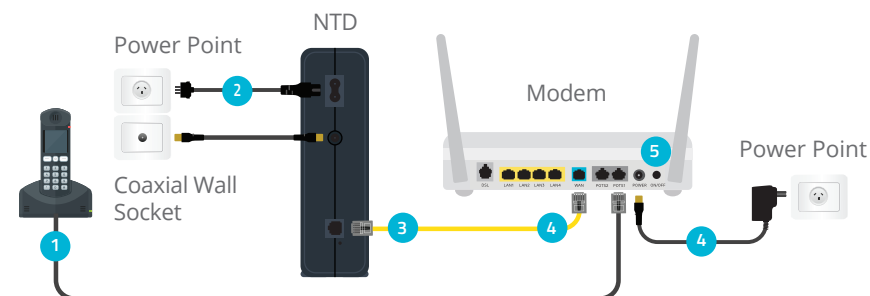




How to get started on the **nbn**™ network with AGL.

Hybrid Fibre Coaxial (HFC)



First, check what's in the box.

Check you have each of these ready:

- ✓ Connect DS244WTV modem
- ✓ Modem power cord
- ✓ Yellow ethernet cable
- ✓ Grey telephone cable

Next, find where your Network Termination Device (NTD) is.

Your Network Termination Device (NTD) is where you connect to the **nbn** network from inside your home.

It usually looks like a large box fixed on a wall, and for your Hybrid Fibre Coaxial **nbn** connection it should be connected to your standard coaxial port. Make sure you leave any cables installed by the **nbn** technician connected at all times.

Once you've found your NTD, you're ready to connect your modem to it. If you don't have or can't find your NTD, or you're having issues setting it up, let us know and we'll help sort it out.

Once your **nbn** connection is confirmed, we'll send you an email letting you know it's time to complete the set up of your modem.

 agl.com.au/help  1300 001 038

nbn™, **nbn** co and other **nbn**™ logos and brands are trademarks of **nbn** co limited and used under licence.

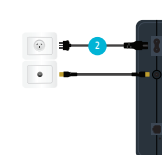


Now it's time to connect your modem.



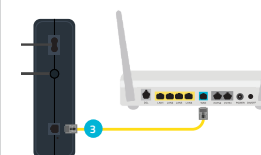
Step 1

Connect your home phone to the port labelled POTS 1 on the back of your modem. You'll only be able to connect your phone if your plan includes a **nbn** home phone service



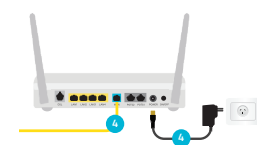
Step 2

Check your NTD is plugged into a power point and connected to the Coaxial port in the wall.



Step 3

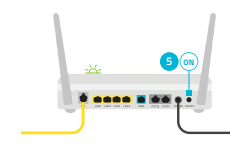
Connect one end of the yellow ethernet cable into the UNI-D 1 Port of the NTD.



Step 4

Connect the other end of the yellow ethernet cable into the modem's blue WAN port.

Then connect the modem power cord into the back of the modem and into the power point.



Step 5

Turn the power on at the power point, and push the on/off button on the back of the modem.

The modem lights will start flashing green as it starts up. When it's finished syncing, it will show three solid green lights and two flickering green lights. You can go on to the next step, even if it's still flickering.



Step 6

Time to get connected.

To connect a Wi-Fi device you'll need the Wireless Network Connection name (SSID) and password which you will find on the base of your modem.