

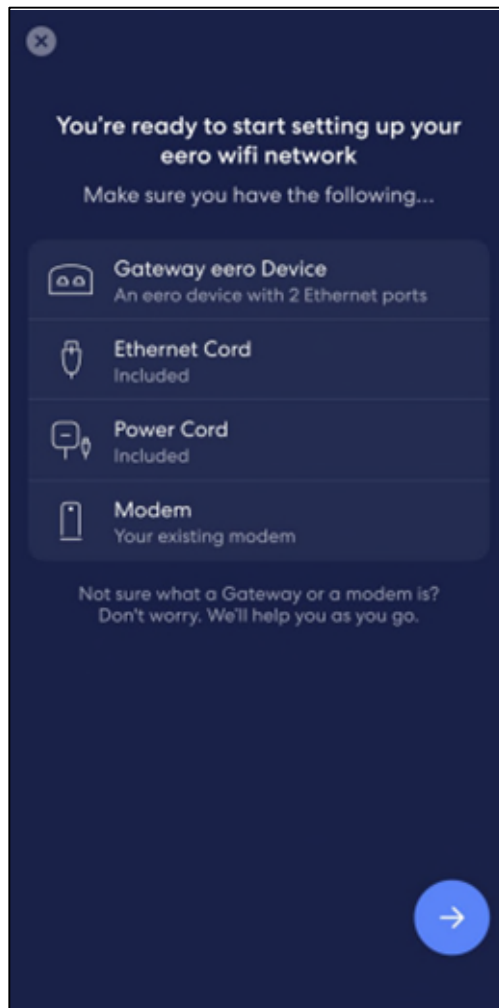
Amazon eero 6 device setup

To setup your new eero 6 device (eero device), simply download the eero application via Google Play or the Apple store.

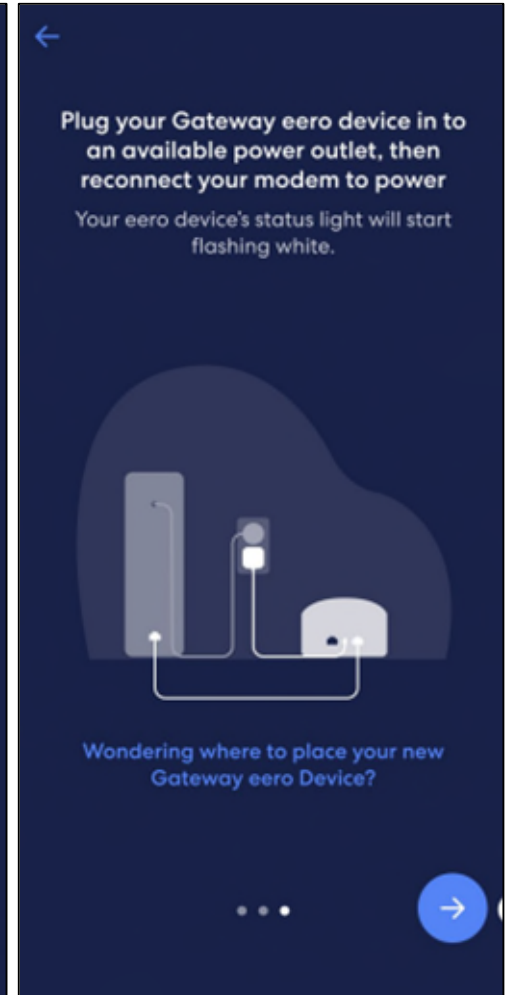
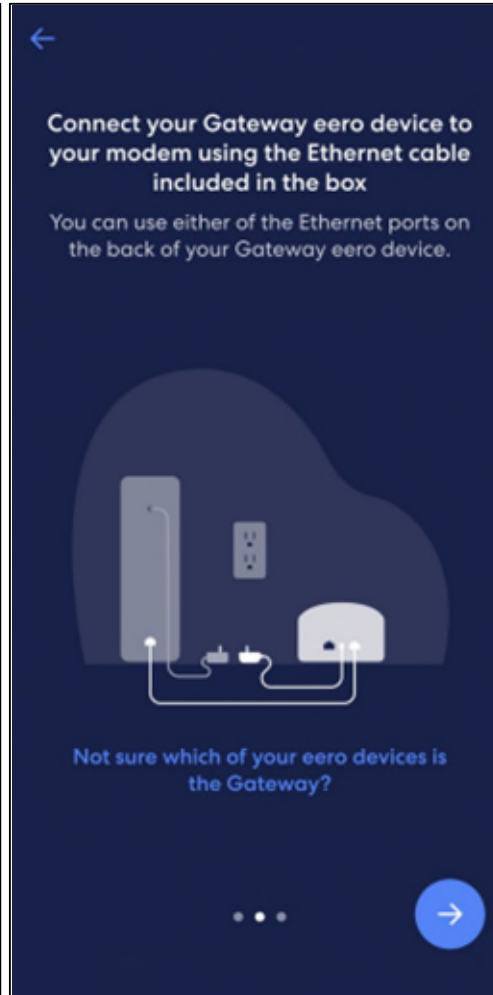
1. Open the app and click Get Started.



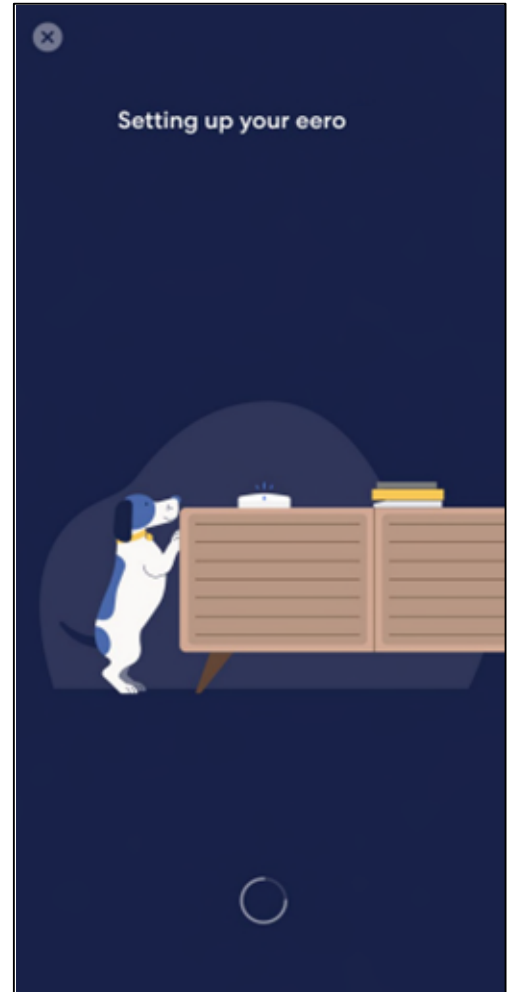
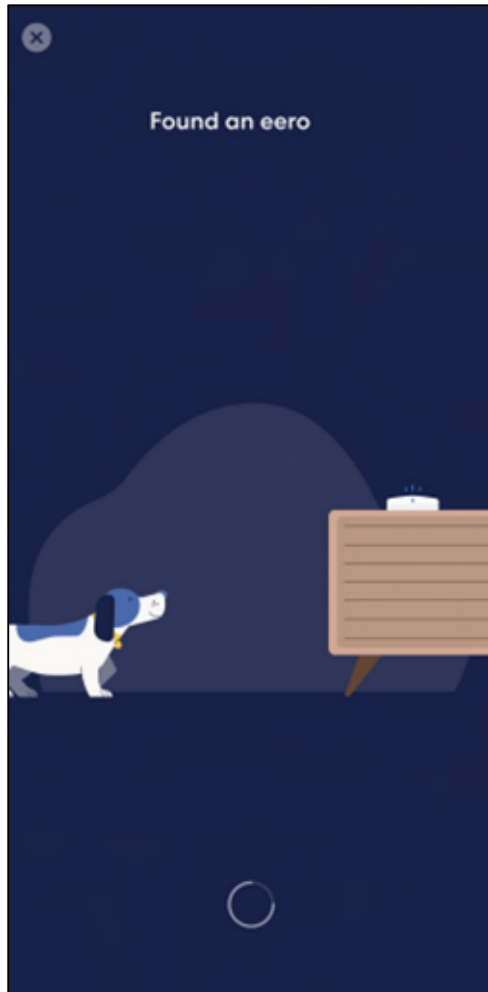
2. Ensure you have all the listed equipment, then click the arrow in the bottom right corner.

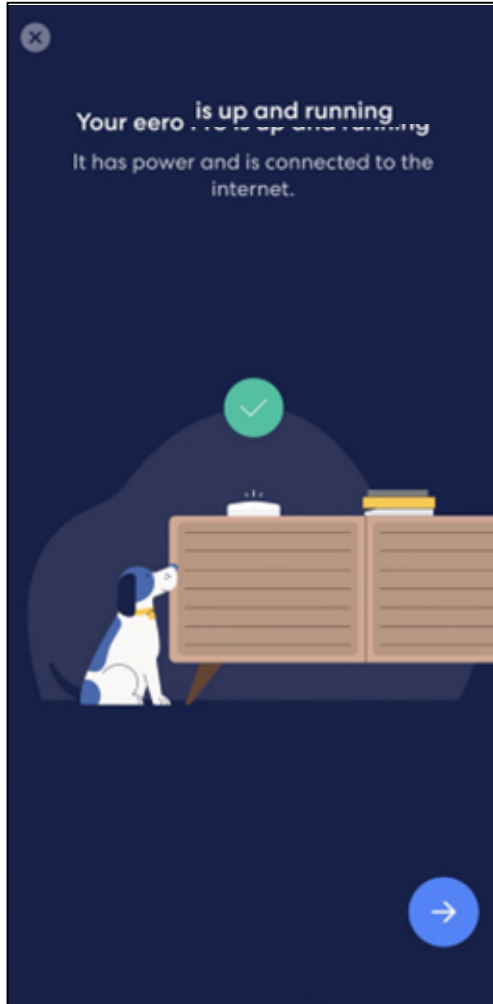


3. Ensure everything is unplugged before you begin, then simply follow the steps shown. **Please note:** if you do not have a modem, instead of plugging in your eero device into a modem, you will plug it into your nbn™ NTD.

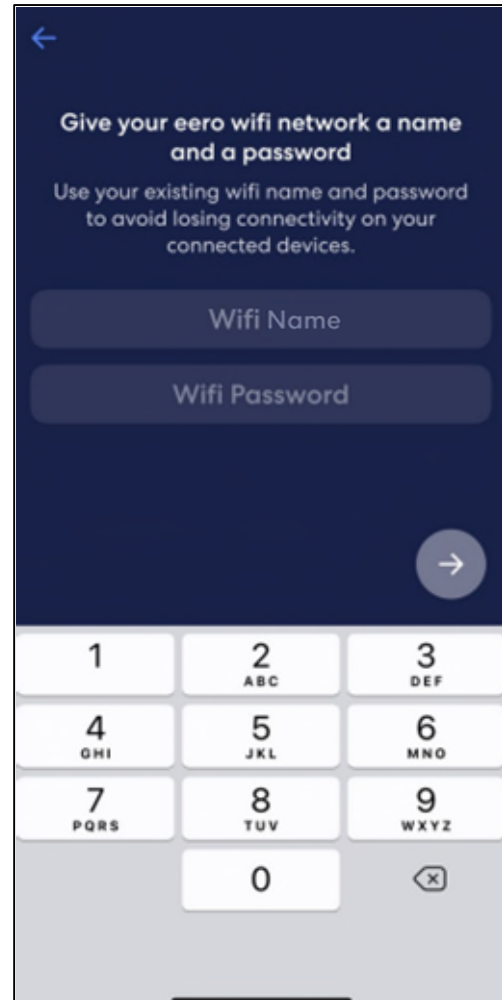
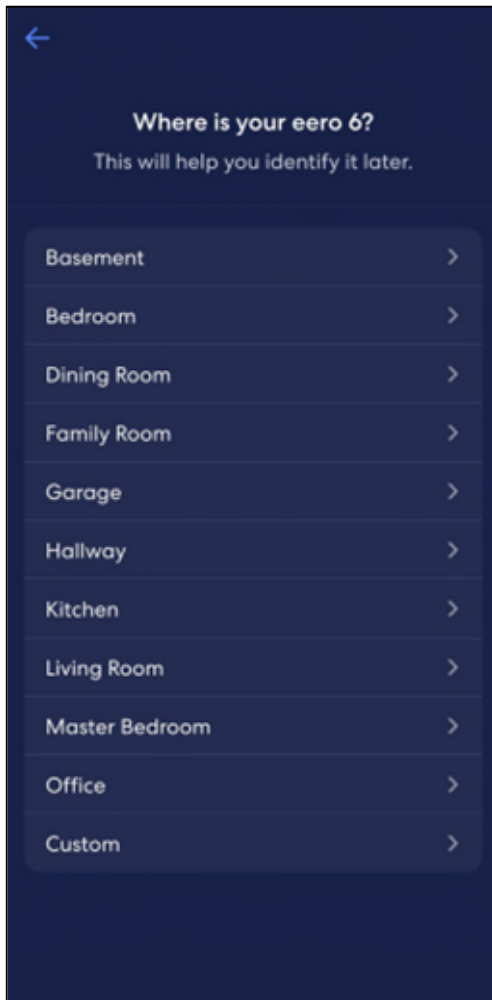


4. Wait for the application to find and setup your eero device.

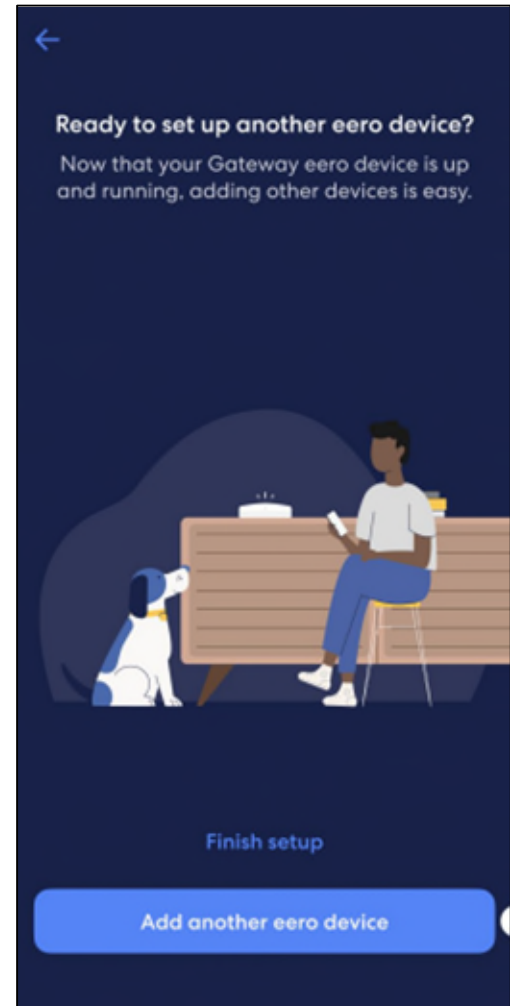
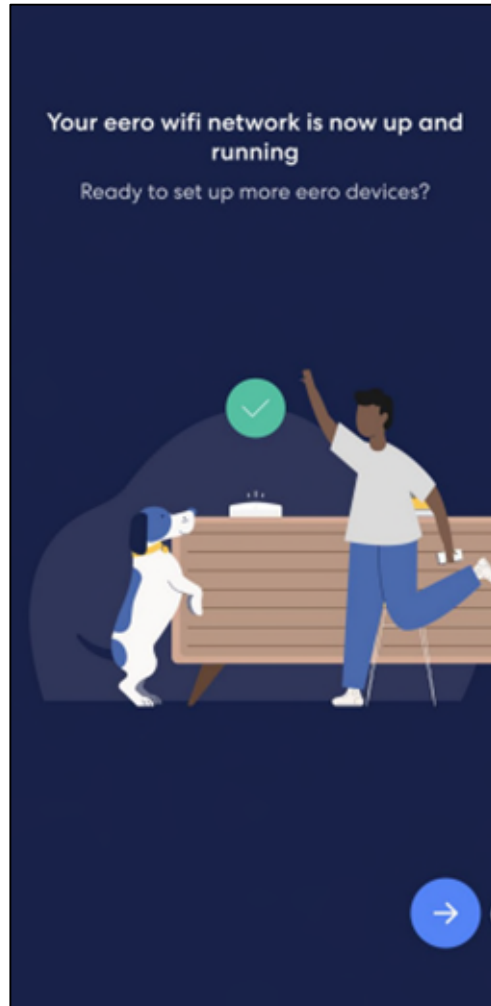
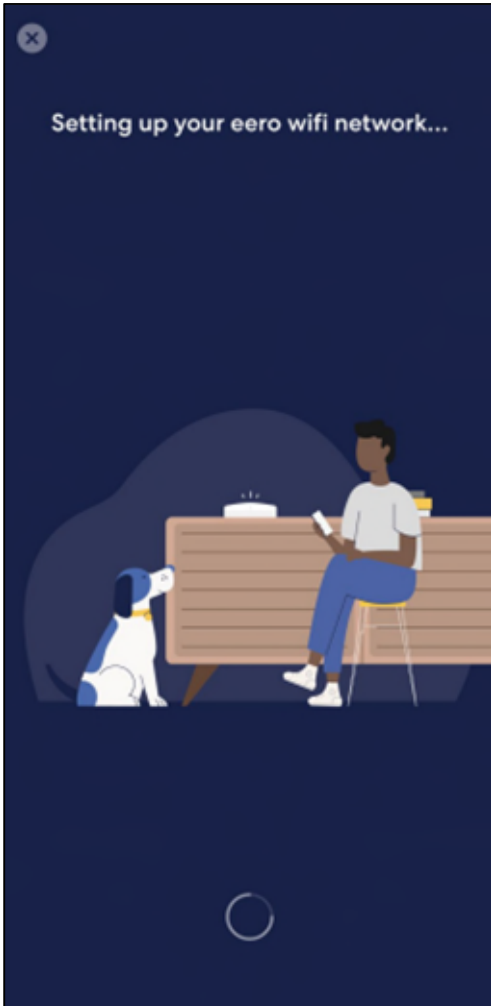




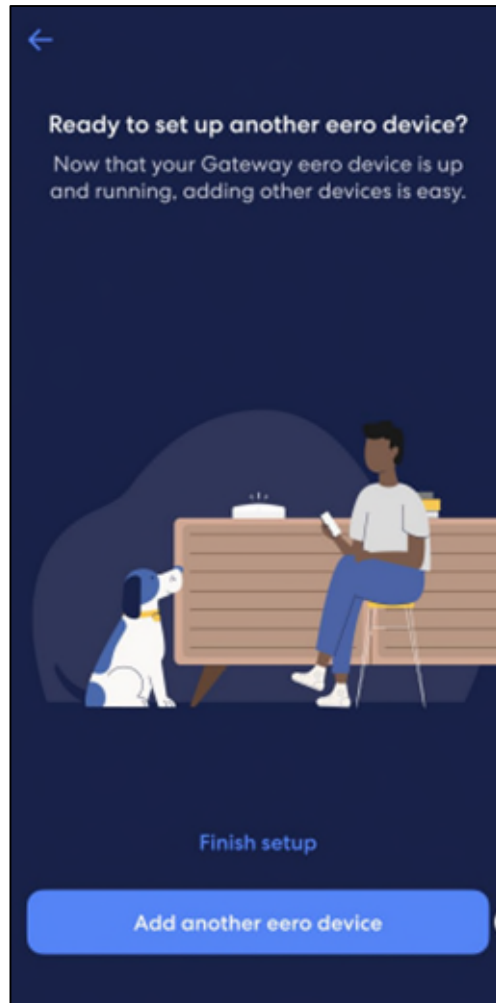
- Once connected, specify where your eero device is located and enter your desired Wifi Name and Wifi Password, then select the arrow in the bottom right corner.



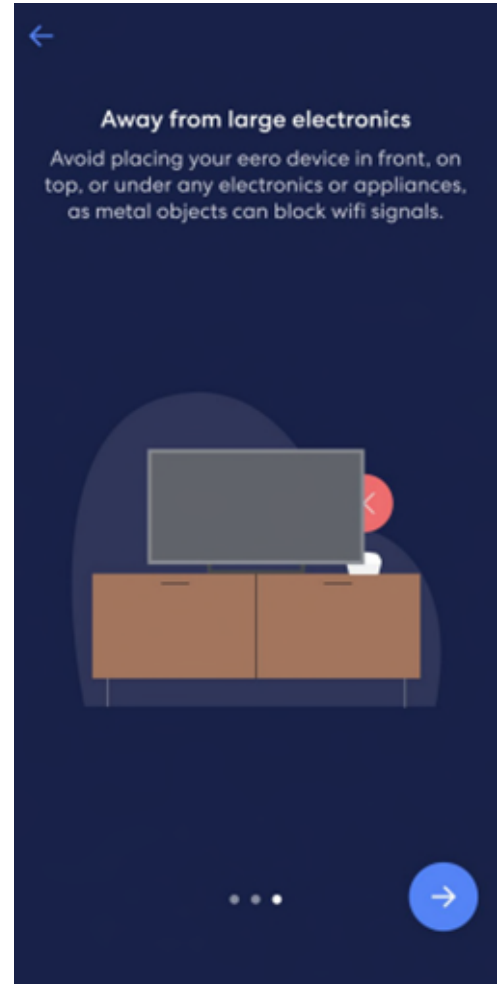
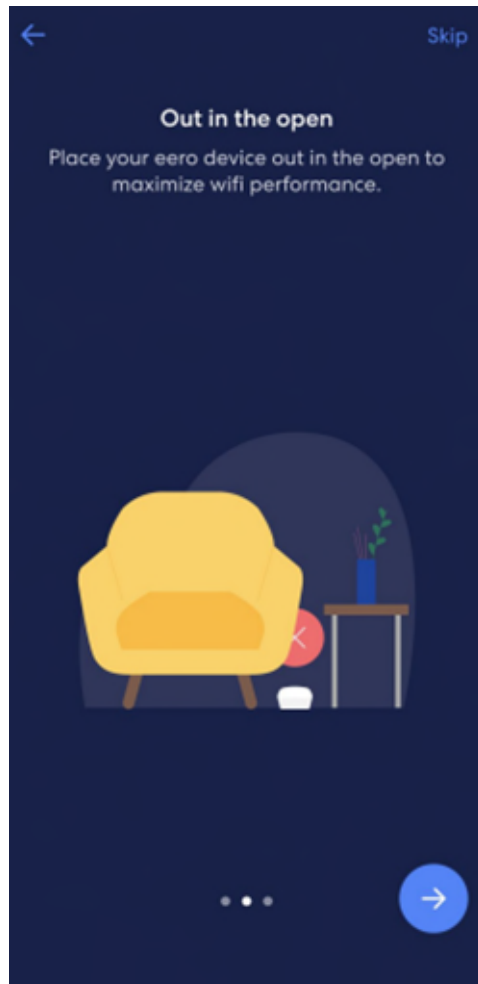
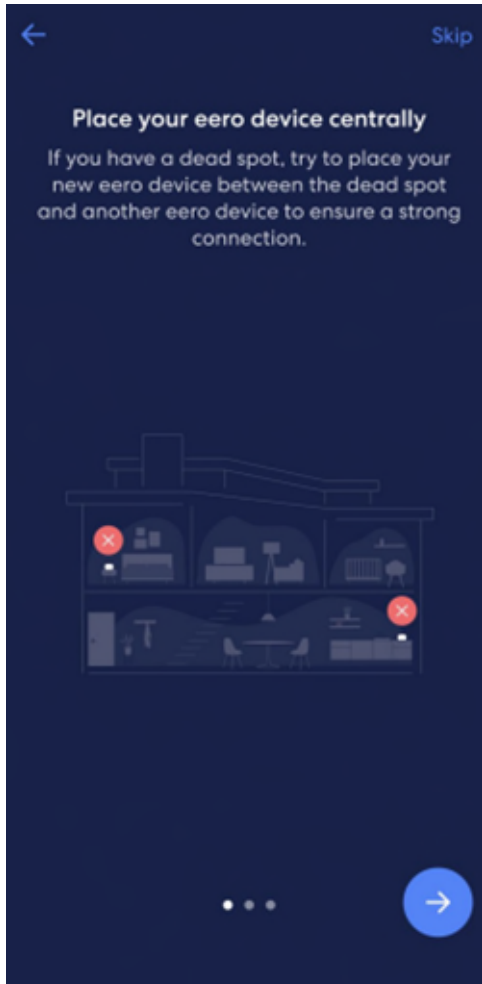
6. Wait until your eero has connected to your Wifi. If you only have one eero device, select Finish setup. If you have multiple eero devices, proceed to Step 7.



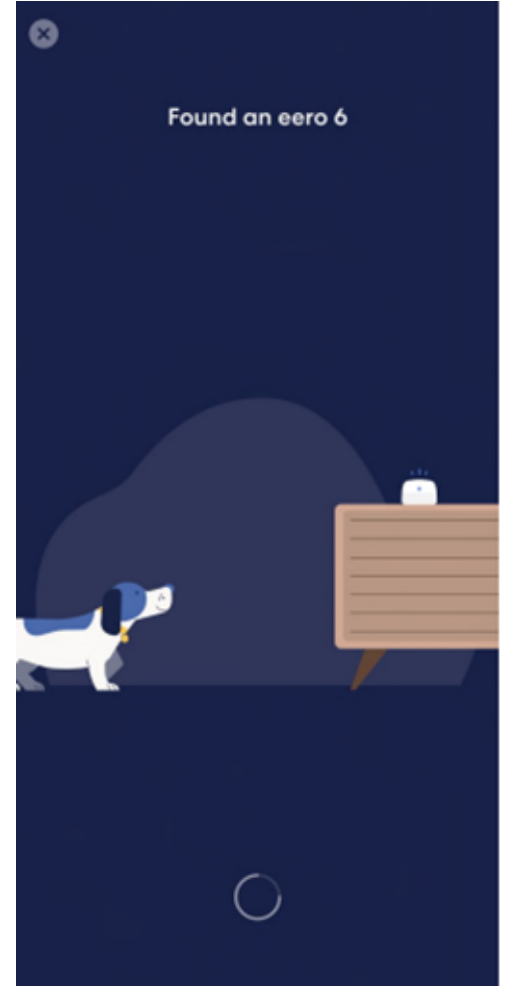
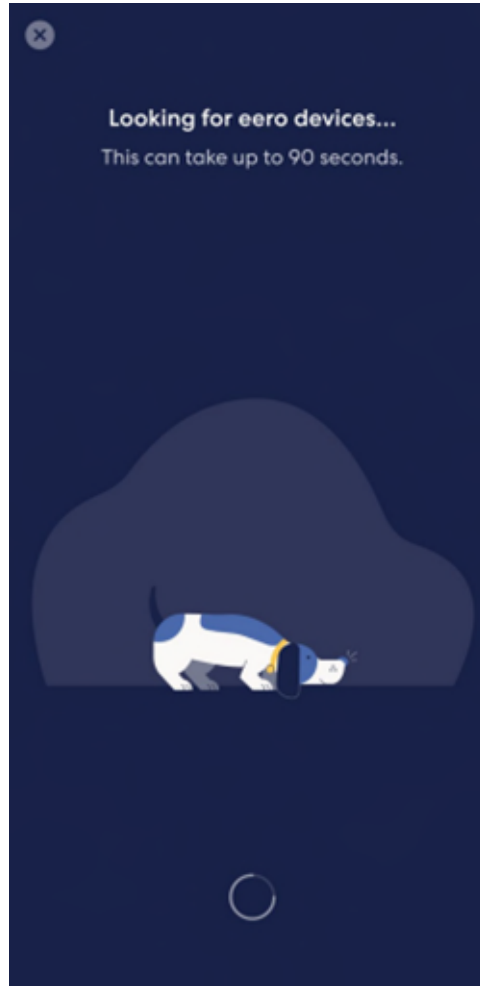
7. If you have another eero device to setup, then select Add another eero device.



- The eero application will provide suggestions on where to position your eero device/s to get the strongest possible connection.



9. Plug your eero device into a power outlet and select the next arrow in the bottom right corner. The app will go through the same steps of setting up your additional eero device and connecting it to the internet.



10. Specify the location of the eero device and the app will complete the setup.

11. Once completed, simply repeat the process for the number of eero devices you wish to connect or select Finish Setup.

