

# AGL LOY YANG PTY LTD

## Monthly Monitoring Report

**Licence Number:** 11149  
**Licensee:** AGL Loy Yang Pty Ltd  
**Premises Address:** Bartons Lane  
Traralgon VIC 3844  
**Reporting Period:** 1 March 2022 to 31 March 2022



## Introduction

AGL Loy Yang is situated in the Latrobe Valley, approximately 165 kilometres east of Melbourne. AGL Loy Yang holds an Environment Protection Authority (EPA) Licence (11149) for the operation of the Loy Yang A Power Station and the adjacent Loy Yang brown coal mine.

AGL Loy Yang's emissions to air from the Power Station result from the combustion of coal to produce electricity. The products of coal combustion include sulphur dioxide (SO<sub>2</sub>), oxides of nitrogen (NO<sub>x</sub>), carbon monoxide (CO), and particles.

AGL Loy Yang has four generating units. Discharge points 1-4 are the corresponding power station unit stacks. Each unit (discharge points 1-4) is fitted with a Continuous Emissions Monitoring System (CEMS) for sulphur dioxide, oxides of nitrogen, carbon monoxide, and particles.

This monitoring report relates to the air emissions monitoring activities specified in conditions LI\_DA4 and LI\_DA4.2 of EPA Licence 11149.

There may be differences when comparing the information reported on a daily basis and the information reported in the monthly report. Apparent non-compliances may be the result of instrument calibration, an instrument failure, or an error in the data transfer process. The data validation process at the end of each month, which involves checking the accuracy and quality of the data, will identify these and they will be explained in the monthly report.

If you have any questions regarding the information presented, please contact AGL Loy Yang via [lymonitoring@agl.com.au](mailto:lymonitoring@agl.com.au)



# March 2022 Data Summary

| Discharge Point | 1 - 4                   |   |               |   |                         |   |               |   |                         |   |               |   |                         |   |               |   |
|-----------------|-------------------------|---|---------------|---|-------------------------|---|---------------|---|-------------------------|---|---------------|---|-------------------------|---|---------------|---|
| Monitoring      | Continuous              |   |               |   |                         |   |               |   |                         |   |               |   |                         |   |               |   |
| Indicator       | Carbon Monoxide         |   |               |   | Oxides of Nitrogen      |   |               |   | Particles               |   |               |   | Sulphur Dioxide         |   |               |   |
| Limit Type      | Maximum 90th percentile |   | Maximum Daily |   | Maximum 90th percentile |   | Maximum Daily |   | Maximum 90th percentile |   | Maximum Daily |   | Maximum 90th percentile |   | Maximum Daily |   |
| Limit           | 40,000 g/min            |   | 121,600 g/min |   | 73,600 g/min            |   | 96,500 g/min  |   | 16,200 g/min            |   | 39,500 g/min  |   | 200,000 g/min           |   | 400,000 g/min |   |
| Date            | Max Value               |   | Max Value     |   | Max Value               |   | Max Value     |   | Max Value               |   | Max Value     |   | Max Value               |   | Max Value     |   |
| 01/03/2022      | 17,027                  | ● | 26,383        | ● | 52,874                  | ● | 55,699        | ● | 12,886                  | ● | 16,128        | ● | 139,086                 | ● | 153,316       | ● |
| 02/03/2022      | 17,103                  | ● | 35,884        | ● | 52,874                  | ● | 55,929        | ● | 12,886                  | ● | 16,208        | ● | 139,086                 | ● | 126,725       | ● |
| 03/03/2022      | 17,103                  | ● | 14,740        | ● | 52,834                  | ● | 55,332        | ● | 12,877                  | ● | 13,048        | ● | 139,002                 | ● | 140,287       | ● |
| 04/03/2022      | 17,109                  | ● | 17,598        | ● | 52,789                  | ● | 55,502        | ● | 12,877                  | ● | 14,165        | ● | 139,065                 | ● | 150,506       | ● |
| 05/03/2022      | 17,109                  | ● | 19,793        | ● | 52,789                  | ● | 52,100        | ● | 12,877                  | ● | 11,015        | ● | 139,086                 | ● | 142,946       | ● |
| 06/03/2022      | 17,065                  | ● | 14,183        | ● | 52,788                  | ● | 38,920        | ● | 12,877                  | ● | 17,874        | ● | 139,086                 | ● | 92,514        | ● |
| 07/03/2022      | 16,968                  | ● | 918           | ● | 52,770                  | ● | 38,703        | ● | 12,877                  | ● | 7,402         | ● | 139,086                 | ● | 67,975        | ● |
| 08/03/2022      | 16,897                  | ● | 41,118        | ● | 52,674                  | ● | 43,025        | ● | 12,877                  | ● | 11,455        | ● | 139,086                 | ● | 102,622       | ● |
| 09/03/2022      | 16,897                  | ● | 15,164        | ● | 52,674                  | ● | 47,731        | ● | 12,877                  | ● | 11,833        | ● | 139,086                 | ● | 101,250       | ● |
| 10/03/2022      | 16,857                  | ● | 10,089        | ● | 52,625                  | ● | 47,072        | ● | 12,877                  | ● | 10,404        | ● | 139,086                 | ● | 105,187       | ● |
| 11/03/2022      | 16,791                  | ● | 33,055        | ● | 52,542                  | ● | 52,022        | ● | 12,877                  | ● | 9,606         | ● | 139,151                 | ● | 143,376       | ● |
| 12/03/2022      | 16,666                  | ● | 9,465         | ● | 52,414                  | ● | 56,632        | ● | 12,901                  | ● | 16,905        | ● | 139,352                 | ● | 170,993       | ● |
| 13/03/2022      | 16,587                  | ● | 2,739         | ● | 52,366                  | ● | 56,265        | ● | 12,955                  | ● | 19,143        | ● | 139,942                 | ● | 199,547       | ● |
| 14/03/2022      | 16,526                  | ● | 5,008         | ● | 52,367                  | ● | 58,916        | ● | 12,972                  | ● | 16,690        | ● | 140,878                 | ● | 226,185       | ● |
| 15/03/2022      | 16,523                  | ● | 2,372         | ● | 52,367                  | ● | 57,678        | ● | 12,981                  | ● | 18,733        | ● | 141,810                 | ● | 231,953       | ● |
| 16/03/2022      | 16,490                  | ● | 2,257         | ● | 52,357                  | ● | 55,104        | ● | 12,981                  | ● | 14,425        | ● | 142,026                 | ● | 207,402       | ● |
| 17/03/2022      | 16,490                  | ● | 2,749         | ● | 52,313                  | ● | 41,808        | ● | 12,981                  | ● | 11,349        | ● | 142,026                 | ● | 138,829       | ● |
| 18/03/2022      | 16,490                  | ● | 4,784         | ● | 52,313                  | ● | 40,006        | ● | 12,981                  | ● | 9,156         | ● | 142,026                 | ● | 138,592       | ● |
| 19/03/2022      | 16,490                  | ● | 4,780         | ● | 52,313                  | ● | 36,579        | ● | 12,981                  | ● | 8,315         | ● | 142,026                 | ● | 121,973       | ● |
| 20/03/2022      | 16,493                  | ● | 32,186        | ● | 52,313                  | ● | 39,092        | ● | 12,981                  | ● | 12,541        | ● | 142,026                 | ● | 133,689       | ● |
| 21/03/2022      | 16,493                  | ● | 12,026        | ● | 52,313                  | ● | 37,046        | ● | 12,982                  | ● | 12,852        | ● | 142,026                 | ● | 120,348       | ● |
| 22/03/2022      | 16,493                  | ● | 14,983        | ● | 52,313                  | ● | 38,209        | ● | 12,999                  | ● | 18,589        | ● | 142,185                 | ● | 164,725       | ● |
| 23/03/2022      | 16,467                  | ● | 9,883         | ● | 52,313                  | ● | 43,392        | ● | 13,019                  | ● | 20,014        | ● | 142,312                 | ● | 160,742       | ● |
| 24/03/2022      | 16,467                  | ● | 31,878        | ● | 52,313                  | ● | 45,397        | ● | 13,046                  | ● | 16,425        | ● | 142,312                 | ● | 115,524       | ● |
| 25/03/2022      | 16,303                  | ● | 24,034        | ● | 52,313                  | ● | 42,124        | ● | 13,046                  | ● | 9,121         | ● | 142,312                 | ● | 64,267        | ● |
| 26/03/2022      | 16,206                  | ● | 14,167        | ● | 52,313                  | ● | 42,209        | ● | 13,046                  | ● | 18,700        | ● | 142,312                 | ● | 76,938        | ● |
| 27/03/2022      | 16,218                  | ● | 25,056        | ● | 52,313                  | ● | 41,745        | ● | 13,046                  | ● | 7,658         | ● | 142,312                 | ● | 98,209        | ● |
| 28/03/2022      | 16,252                  | ● | 40,170        | ● | 52,313                  | ● | 46,640        | ● | 13,046                  | ● | 9,603         | ● | 142,312                 | ● | 129,068       | ● |
| 29/03/2022      | 16,323                  | ● | 28,187        | ● | 52,313                  | ● | 48,108        | ● | 13,046                  | ● | 11,879        | ● | 142,378                 | ● | 146,396       | ● |
| 30/03/2022      | 16,360                  | ● | 37,587        | ● | 52,313                  | ● | 43,605        | ● | 13,046                  | ● | 11,248        | ● | 142,378                 | ● | 136,859       | ● |
| 31/03/2022      | 16,368                  | ● | 36,002        | ● | 52,309                  | ● | 43,122        | ● | 13,046                  | ● | 7,377         | ● | 142,378                 | ● | 105,336       | ● |

## Monitoring System Availability

No monitoring system failures were recorded in March 2022.

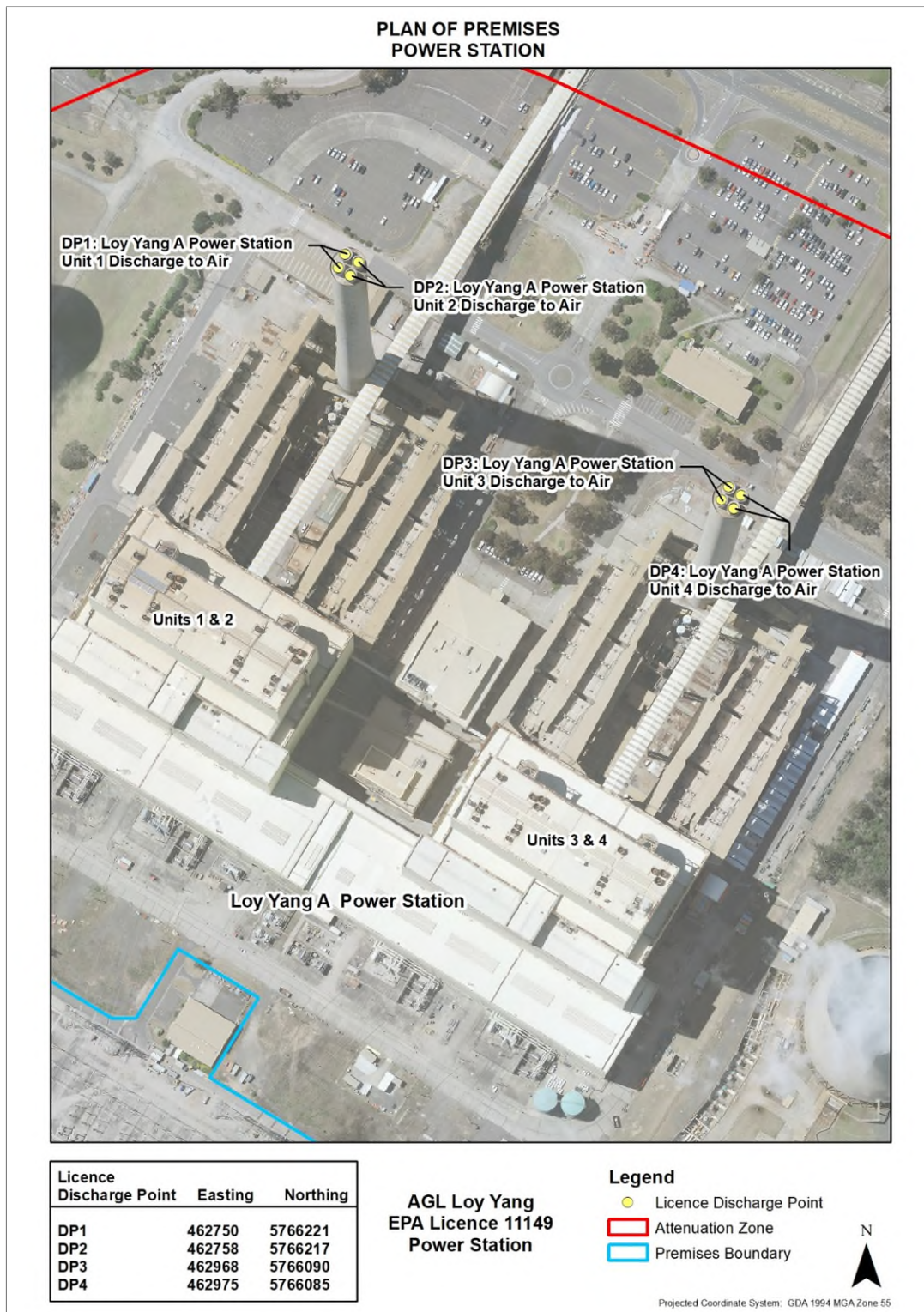
## Details of any exceedances of discharge limits

No exceedances of licence condition LI\_DA1.10.2 discharge limits were recorded in March 2022.

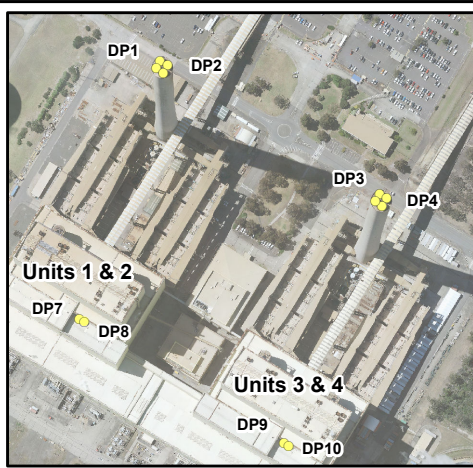
## Details of any corrections made to previous reports

No corrections have been made to any previous reports.

# AGL Loy Yang Site Plan

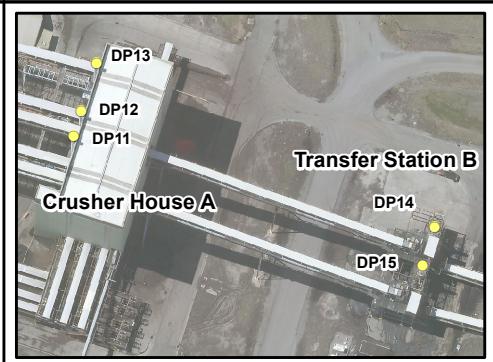


# PLAN OF PREMISES

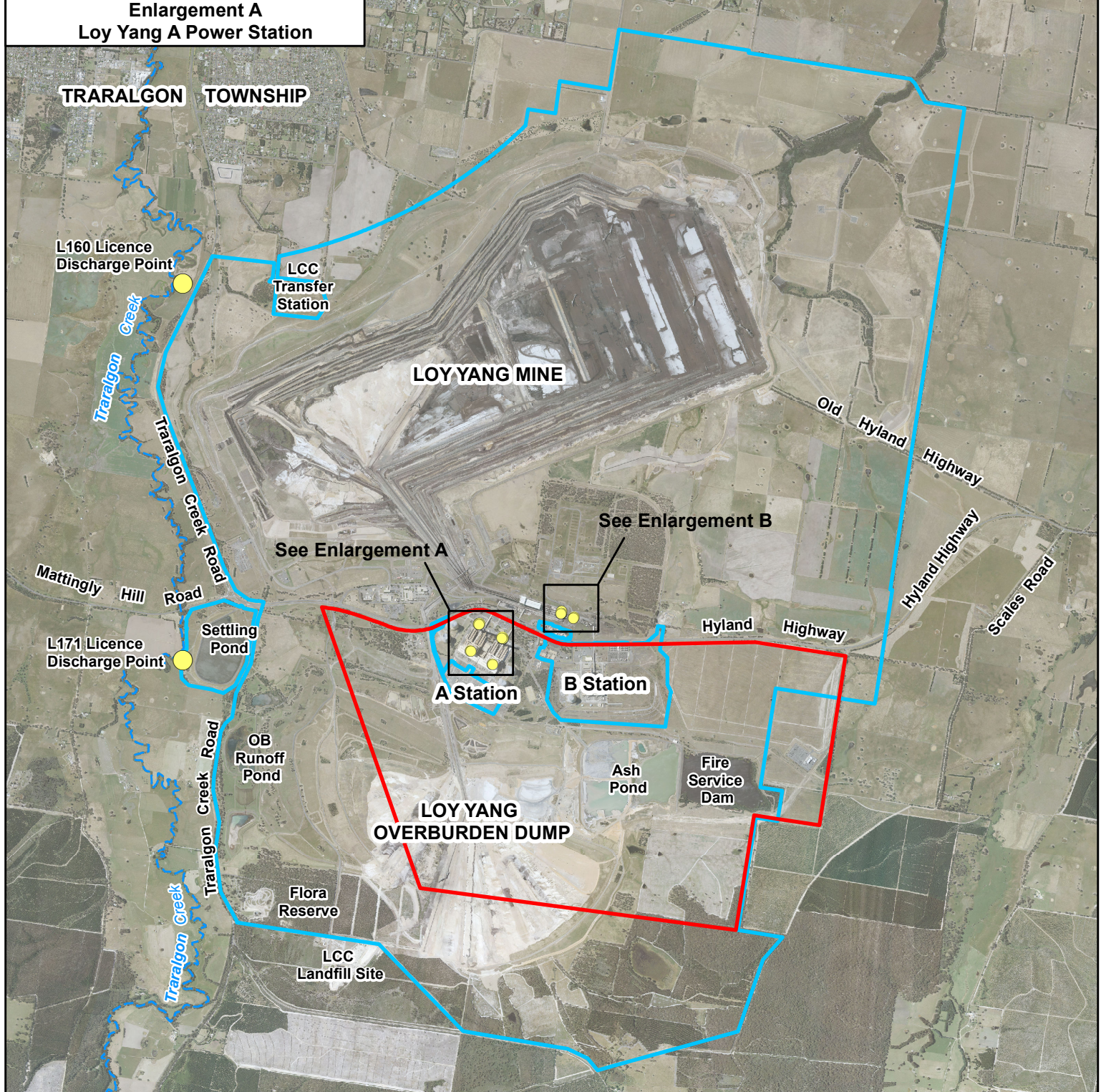


**Enlargement A  
Loy Yang A Power Station**

| Licence Discharge Point | Easting | Northing |
|-------------------------|---------|----------|
| L160                    | 460010  | 5769368  |
| L171                    | 460022  | 5765887  |
| DP1                     | 462750  | 5766221  |
| DP2                     | 462758  | 5766217  |
| DP3                     | 462968  | 5766090  |
| DP4                     | 462975  | 5766085  |
| DP7                     | 462670  | 5765965  |
| DP8                     | 462675  | 5765963  |
| DP9                     | 462872  | 5765842  |
| DP10                    | 462878  | 5765840  |
| DP11                    | 463507  | 5766308  |
| DP12                    | 463510  | 5766316  |
| DP13                    | 463515  | 5766332  |
| DP14                    | 463627  | 5766278  |
| DP15                    | 463623  | 5766265  |



**Enlargement B  
Cusher House A & Transfer Station B**



**Legend**

- Licence Discharge Point
- Attenuation Zone
- Premises Boundary

**AGL Loy Yang  
EPA Licence 11149**

