



# Report

## AGL GLOUCESTER METHANE MONITORING CAMPAIGN – INTERIM REPORT

AGL ENERGY LIMITED

Job ID. 07081G

17 December 2014

**PROJECT NAME:** AGL Gloucester Methane Monitoring Campaign – Interim Report

**JOB ID:** 07081G

**DOCUMENT CONTROL NUMBER** AQU-NQ-001-07081G

**PREPARED FOR:** AGL Energy Limited

**APPROVED FOR RELEASE BY:** D. Roddis

**DISCLAIMER & COPYRIGHT:** This report is subject to the copyright statement located at [www.pacific-environment.com](http://www.pacific-environment.com) © Pacific Environment Operations Pty Ltd ABN 86 127 101 642

#### DOCUMENT CONTROL

VERSION	DATE	COMMENT	PREPARED BY	REVIEWED BY
D1	12/11/2014		J. Firth	D. Roddis

Pacific Environment Operations Pty Ltd: ABN 86 127 101 642

#### BRISBANE

Level 1, 59 Melbourne Street, South Brisbane Qld 4101  
PO Box 3306, South Brisbane Qld 4101  
Ph: +61 7 3004 6400  
Fax: +61 7 3844 5858

Unit 1, 22 Varley Street  
Yeerongpilly, Qld 4105  
Ph: +61 7 3004 6460

#### ADELAIDE

35 Edward Street, Norwood SA 5067  
PO Box 3187, Norwood SA 5067  
Ph: +61 8 8332 0960  
Fax: +61 7 3844 5858

#### SYDNEY

Suite 1, Level 1, 146 Arthur Street  
North Sydney, NSW 2060  
Ph: +61 2 9870 0900  
Fax: +61 2 9870 0999

#### MELBOURNE

Level 10, 224 Queen Street  
Melbourne Vic 3000  
Ph: +61 3 9036 2637  
Fax: +61 2 9870 0999

#### PERTH

Level 1, Suite 3  
34 Queen Street, Perth WA 6000  
Ph: +61 8 9481 4961  
Fax: +61 2 9870 0999

## DISCLAIMER

Pacific Environment acts in all professional matters as a faithful advisor to the Client and exercises all reasonable skill and care in the provision of its professional services.

Reports are commissioned by and prepared for the exclusive use of the Client. They are subject to and issued in accordance with the agreement between the Client and Pacific Environment. Pacific Environment is not responsible for any liability and accepts no responsibility whatsoever arising from the misapplication or misinterpretation by third parties of the contents of its reports.

Except where expressly stated, Pacific Environment does not attempt to verify the accuracy, validity or comprehensiveness of any information supplied to Pacific Environment for its reports.

Reports cannot be copied or reproduced in whole or part for any purpose without the prior written agreement of Pacific Environment.

Where site inspections, testing or fieldwork have taken place, the report is based on the information made available by the client or their nominees during the visit, visual observations and any subsequent discussions with regulatory authorities. The validity and comprehensiveness of supplied information has not been independently verified and, for the purposes of this report, it is assumed that the information provided to Pacific Environment is both complete and accurate. It is further assumed that normal activities were being undertaken at the site on the day of the site visit(s), unless explicitly stated otherwise.

## CONTENTS

1	INTRODUCTION	5
1.1	Objective	5
2	BACKGROUND	5
2.1	Isotopic signature of CH <sub>4</sub>	7
2.1.1	Description	7
2.1.2	Determination of isotopic signature specific to Gloucester area	8
3	METHODOLOGY	12
3.1	Baseline field study	12
3.2	Instrumentation	12
3.2.1	Calibration	12
3.3	Mobile monitoring route	14
4	RESULTS AND DISCUSSION	16
4.1	Key findings	17
5	CONCLUSION	18
6	REFERENCES	19
	APPENDIX A SPATIAL DISTRIBUTION OF METHANE CONCENTRATIONS BY MONITORING RUN	A-1
	APPENDIX B TABULATED RESULTS	B-1
	APPENDIX C TIME SERIES OF THE METHANE CONCENTRATION DATA MEASURED AT THE STATIONARY MONITORING SITE	C-1

### List of Figures

Figure 2-1:	Known sources of fugitive CH <sub>4</sub> emissions	7
Figure 2-2:	Photos during collection of reference samples	10
Figure 2-3:	Box and whisker plot showing $\delta^{13}\text{C}-\text{CH}_4$	11
Figure 2-4:	Histogram of $\delta^{13}\text{C}-\text{CH}_4$ of sample groups	11
Figure 3-1:	AGL mobile monitoring kit	13
Figure 3-2:	Monitoring routes	15

## 1 INTRODUCTION

The Gloucester Gas Project, operated by AGL Energy Limited (AGL), is a coal seam gas (CSG) project located in Gloucester, NSW. AGL has State and Government approvals for a concept plan area, including the Stage 1 gas field development area of up to 110 gas wells and associated infrastructure.

In response to community and stakeholder concerns, AGL has undertaken baseline monitoring of ambient methane (CH<sub>4</sub>) concentrations in the vicinity of the proposed Gloucester Gas Project wells and across the Gloucester region. Part of this study also comprises ambient monitoring post fracture stimulation and flaring activities.

This is an interim report that provides an overview of the baseline monitoring that has been completed up to 30 October 2014.

### 1.1 Objective

The objective of this baseline monitoring program is to determine the concentrations of CH<sub>4</sub> that are typically experienced at locations within the Gloucester Gas Project before the project becomes operational so as to establish a baseline case against which future monitoring results can be compared (post fracture stimulation and flaring).

The monitoring program has been designed to measure CH<sub>4</sub> over 202 kilometres (km) within the Gloucester Gas Project. A stationary monitor was also installed for a 10 day period to characterise CH<sub>4</sub> concentrations over time.

This study is considered to represent baseline analysis of the current conditions in the vicinity of the Gloucester area.

## 2 BACKGROUND

Methane is an important trace gas in atmospheric chemistry and climate science. The most recent measurements report by the World Meteorological Organisation (WMO) indicate the global average CH<sub>4</sub> concentration to have risen to 1.824<sup>a</sup>ppm (WMO, 2014). The methane concentration has reportedly doubled over the past two hundred years determined primarily through ice core analyses.

In urban areas, CH<sub>4</sub> concentrations are generally slightly higher due the potential influence of a greater number of sources known to release fugitive CH<sub>4</sub>. As part of this study, preliminary monitoring in Sydney's CBD indicates that CH<sub>4</sub> concentrations typically range between 1.8ppm and 2.0ppm. A recent study investigating CH<sub>4</sub> in the city of Boston, USA (Phillips et al., 2013) measured concentrations up to 28.6ppm when mapping urban pipeline leaks across the city using a Picarro instrument mounted within a vehicle. This study was able to differentiate between fugitive emissions of CH<sub>4</sub> from urban pipeline leaks and other known sources of CH<sub>4</sub>, such as landfill and sewage systems.

Studies completed by Lowry et al. (2001) in London, where the greatest CH<sub>4</sub> contributors were reported to be associated with gas storage and distribution systems as well as sewage treatment, measured CH<sub>4</sub> concentrations as high as 6.1ppm when investigating diurnal patterns of CH<sub>4</sub> and δ<sup>13</sup>C-CH<sub>4</sub>. This study observed hourly averages commonly ranging between 1.8ppm and 3.0ppm. Contributors to the diurnal fluctuations were not only influenced by the prevailing meteorological conditions (i.e. temperature inversions), but also periods when the general population tend to use gas appliances (i.e. cooking, hot water systems etc.) Lowry et al. (2001) also identified a relationship between wind speed and CH<sub>4</sub> concentration, with higher concentrations associated with lower (<2m/s) wind speeds.

---

<sup>a</sup> For the purposes of this report this value has been rounded to 1.8ppm.

Methane is an effective greenhouse gas, with a global warming potential 28 times greater compared to carbon dioxide, when considered over a 100 year time frame (**IPCC AR5, 2013**).

Natural sources of fugitive CH<sub>4</sub> can include:

- Micro-organisms that live in wetlands
- Termites (methane generated by micro-organisms contained within their digestive tract)
- Volcanoes
- Naturally occurring open coal seams
- Permafrost thawing
- Hydrates and clathrates (CH<sub>4</sub> trapped in very cold continental and oceanic waters).

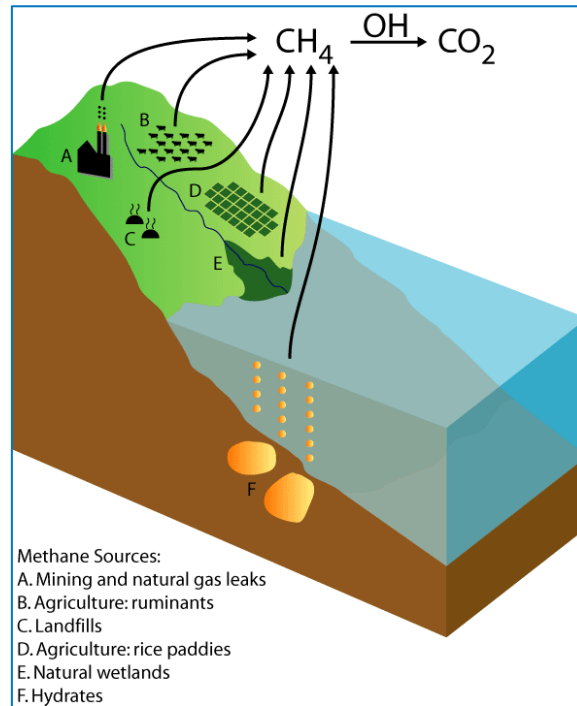
Anthropogenic sources (those generated by human activities), are commonly associated with agricultural practices, such as livestock emissions (ruminant digestion processes) or from rice paddies. Fugitive CH<sub>4</sub> emissions from waste, such as sewage and landfill are primarily generated through fermentation processes and are most significant in urbanised areas. Other fugitive sources of CH<sub>4</sub> are released during mining of coal or oil and gas production.

**Figure 2-1** graphically depicts the main sources and sinks of methane in the environment. Any of these sources may be expected to yield CH<sub>4</sub> concentrations of >10ppm, however with no implications for health.

There are no known health effects associated with methane and it is not defined as a hazardous air pollutant (**US EPA, 2014**). As discussed in above there are trigger level concentrations for CH<sub>4</sub> that are governed by its potential for asphyxiation or explosivity.

The primary removal mechanism of methane from the atmosphere is through chemical reactions with the hydroxyl radical (OH) forming carbon dioxide (CO<sub>2</sub>). The OH reacts with a number of gases in the atmosphere and is commonly referred to as a chemical species that 'cleans' the atmosphere.

As an organic molecule, advanced analytical techniques may be applied to determine the source of the methane. This can be achieved by measuring the proportion of <sup>12</sup>C compared with <sup>13</sup>C within a given sample of CH<sub>4</sub> molecules (referred to as the isotopic ratio).



(Source: NASA GISS, 2013)

Figure 2-1: Known sources of fugitive CH<sub>4</sub> emissions

## 2.1 Isotopic signature of CH<sub>4</sub>

### 2.1.1 Description

The isotopic ratio of carbon in CH<sub>4</sub> ( $\delta^{13}\text{C-CH}_4$ , referred to above) is a measure of the stable isotopes of carbon ( $^{13}\text{C}:^{12}\text{C}$ ) within the CH<sub>4</sub> gas sampled, reported in parts per thousand.

Often referred to as the isotopic signature or fingerprint, this parameter is relevant since different sources and sinks of CH<sub>4</sub> have different affinity for the  $^{12}\text{C}$  and  $^{13}\text{C}$  isotopes. By analysing the  $\delta^{13}\text{C-CH}_4$ , different sources of CH<sub>4</sub> in the atmosphere may be distinguished.

For example, there is a known preferential uptake of  $^{12}\text{C}$  over  $^{13}\text{C}$  by plants and microbial activity, which means that biogenic CH<sub>4</sub> is generally lighter than thermogenic CH<sub>4</sub> (i.e. that created via the thermal breakdown of heavier hydrocarbons under high temperature/pressure conditions).

The units of  $\delta^{13}\text{C}$  are parts per thousand (per mil, ‰), and involve measurement against a calcium carbonate standard referred to as Pee Dee Belemnite. This material has an unusually high  $^{13}\text{C}:^{12}\text{C}$  ratio, and as a result, most natural material analysed in this manner results in a negative  $\delta^{13}\text{C}$ . The more negative the  $\delta^{13}\text{C-CH}_4$  value, the lower the  $^{13}\text{C}:^{12}\text{C}$  ratio, and thus the lighter the CH<sub>4</sub> being sampled.

The isotopic composition of common methane sources has been characterised in a number of studies of the past several decades. **Table 2-1** provides a summary of the most common methane sources and the  $\delta^{13}\text{C-CH}_4$  for each source. These  $\delta^{13}\text{C-CH}_4$  are consistent with those established in other studies discussed in *Initial report on the Independent Review of Coal Seam Gas Activities in NSW (CS&E, 2013)* where, broadly speaking,  $\delta^{13}\text{C-CH}_4$  values less than -55‰ are associated with biogenic methane and  $\delta^{13}\text{C-CH}_4$  values above -55‰ are related to thermogenic sources of methane. It is important to note that the  $\delta^{13}\text{C-CH}_4$  characteristic of a source is more commonly observed as a range of measurements than a single discrete number.

**Table 2-1:  $\delta^{13}\text{C}-\text{CH}_4$  of common natural and anthropogenic methane sources**

Source	$\delta^{13}\text{C}-\text{CH}_4$ (‰)
<b>Natural sources</b>	
Wetlands (swamps)	-55±3
Wetlands (bogs and tundra)	-65±5
Oceans	-59
Mud volcanoes	-40
Termites	-57
Wild animals	-62
<b>Anthropogenic sources</b>	
Biomass burning (C4 vegetation)	-17±3
Biomass burning (C3 vegetation)	-26±3
Enteric fermentation (C4 vegetation)	-49±4
Enteric fermentation (C3 vegetation)	-70±4
Landfill	-53±2
Domestic sewage	-57±3
Rice paddies	-62±3
Coal extraction	-35±3
Gas extraction (North Sea)	-34±3
Gas extraction (Siberia)	-50±3
Residential	-38

Source: Montiel et al. (2011), Dlugokencky et al. (2011)

Scientists are able to ascertain the potential source of a fugitive  $\text{CH}_4$  emission by comparing the  $\delta^{13}\text{C}-\text{CH}_4$  of a sample with known ranges of  $\delta^{13}\text{C}-\text{CH}_4$  determined from a reference data set. The reference data set could either be from values published in scientific literature, as shown in **Table 2-1**, or known sources of methane in the area being studied (e.g. landfills, wetlands, and mining operations).

It should be noted that there are limitations associated with using of  $\delta^{13}\text{C}-\text{CH}_4$  values to categorically identify a  $\text{CH}_4$  source, particularly when measuring under ambient conditions. This is because at ambient concentrations (i.e. the global average being 1.8ppm (**WMO, 2014**)) will be by definition a mixture of multiple sources, meaning there is significantly more variability (or 'noise') in the  $\delta^{13}\text{C}-\text{CH}_4$  values measured.

The higher the concentration of  $\text{CH}_4$  observed (i.e. the stronger the signal), the more effective the use of  $\delta^{13}\text{C}-\text{CH}_4$  as a metric of  $\text{CH}_4$  source. Therefore, at low, well mixed  $\text{CH}_4$  concentrations (such as those observed during the study period) interpretation of the  $\delta^{13}\text{C}-\text{CH}_4$  results are to be considered indicative.

### 2.1.2 Determination of isotopic signature specific to Gloucester area

Prior to the commencement of the baseline  $\text{CH}_4$  monitoring program, the  $\delta^{13}\text{C}-\text{CH}_4$  for potential sources of  $\text{CH}_4$  in the Gloucester area has been characterised. A summary of the findings of this study are provided in the following section.

Samples of AGL gas from two representative gas wells were collected and analysed. Upon commissioning of the Waukivory pilot well additional gas samples will be collected and analysed to provide a more extensive dataset.



Two additional sample sites at a nearby landfill and livestock were selected based on the assumption that these would also be significant contributors of CH<sub>4</sub> in the Gloucester air shed. A description of each gas sample source is as follows:

- Landfill (fresh) – fresh landfill that was placed within the past month;
- Landfill (capped 18 months) – landfill that has been placed within the past 6 – 12 months;
- Livestock (cow manure) – fresh cow manure
- Photographs taken during the collection of the samples are shown in **Figure 2-2**.

The landfill and livestock collected using an isolation flux hood, configured in similar method as employed for area source odour sampling (**NSW EPA 2006**).

The results of the  $\delta^{13}\text{C}-\text{CH}_4$  analysis are presented in **Figure 2-3**. The average  $\delta^{13}\text{C}-\text{CH}_4$  across all samples ranged between -44‰ (landfill capped 18 months) and -51‰ (livestock). The samples collected from the landfill and AGL gas samples were in general lower (more negative) than the sample for the livestock. This is in agreement with the preferential uptake of <sup>12</sup>C over <sup>13</sup>C by microbial activity discussed above, resulting in typically lighter CH<sub>4</sub>, with a lower  $\delta^{13}\text{C}-\text{CH}_4$ , from biogenic sources. The results also compare well with those reported in the literature (**Montiel et al. 2011**).

For the gas well samples, the range of the average  $\delta^{13}\text{C}-\text{CH}_4$  was between -50‰ and -44‰. This indicates that the  $\delta^{13}\text{C}-\text{CH}_4$  of coal seam gas can vary across the gas well network. The  $\delta^{13}\text{C}-\text{CH}_4$  can also vary within each gas bag sampled as shown in the range of  $\delta^{13}\text{C}-\text{CH}_4$  measured from each gas bag (e.g. WK3 Samples 1 and 2).

**Figure 2-3** shows a histogram of the  $\delta^{13}\text{C}-\text{CH}_4$  for all samples. The three sample groups show a unique 'fingerprint' of the  $\delta^{13}\text{C}-\text{CH}_4$  values measured. This data can be used to compare with field samples to ascertain the source of the CH<sub>4</sub>.



**AGL gas samples**

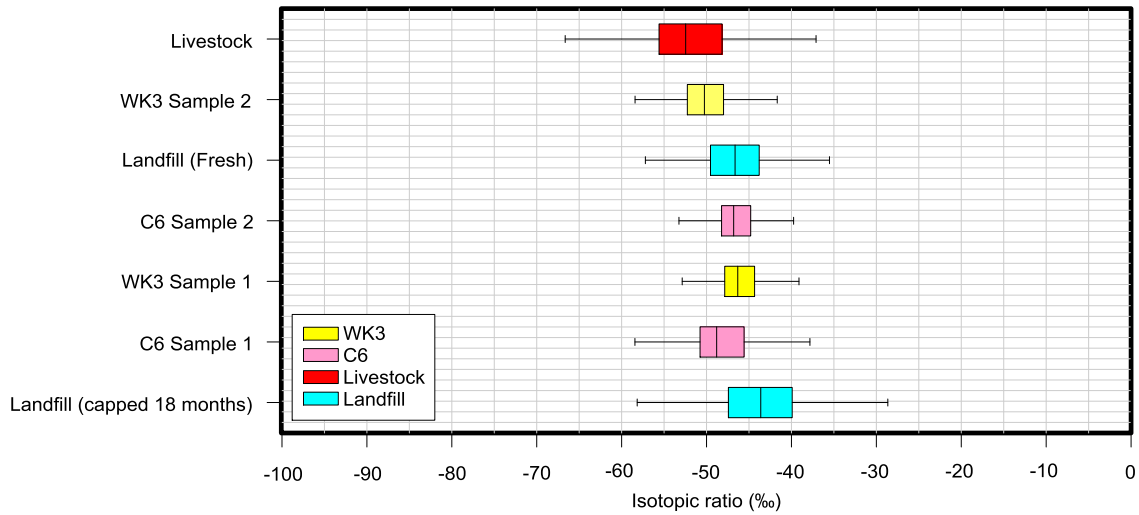


**Livestock**



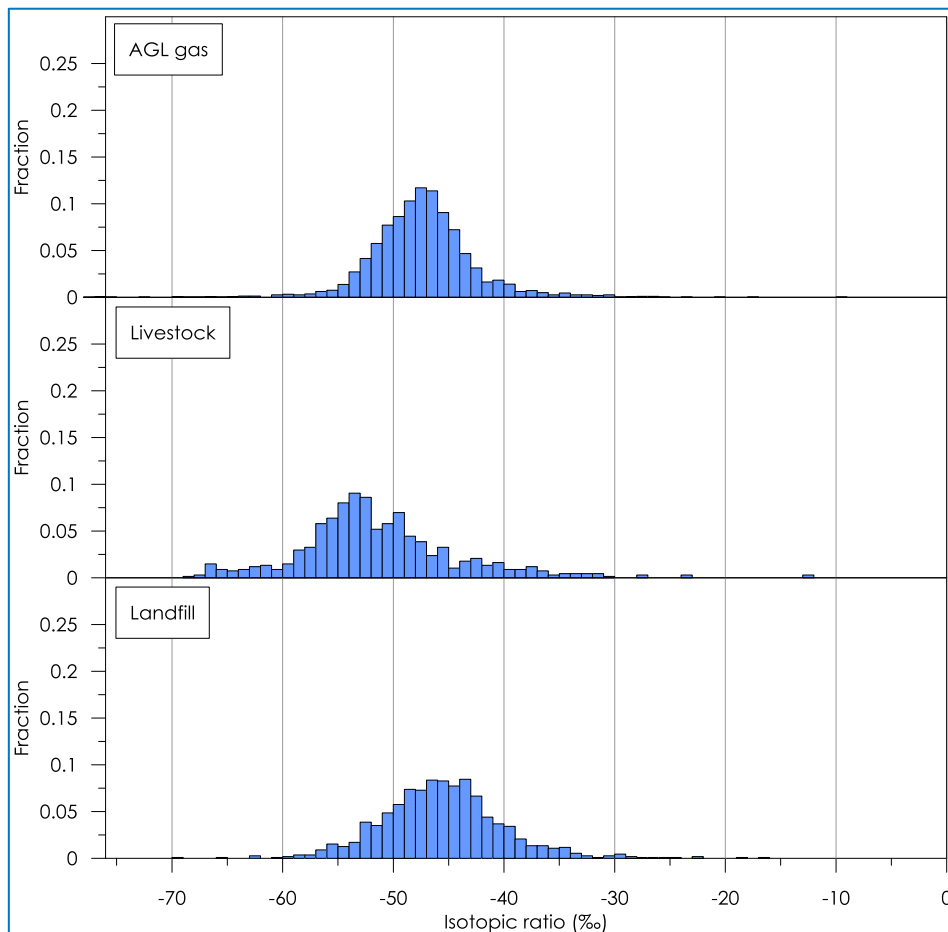
**Landfill**

**Figure 2-2: Photos during collection of reference samples**



**Figure 2-3 Box and whisker plot showing  $\delta^{13}\text{C}-\text{CH}_4$**

Note: The centreline of the box indicates the median value. The left side of the box indicates the lower quartile and the right indicates the upper quartile. The far left and far right error bars indicate the minimum and maximum of the values measured.



**Figure 2-4: Histogram of  $\delta^{13}\text{C}-\text{CH}_4$  of sample groups**

## 3 METHODOLOGY

### 3.1 Baseline field study

The field campaign has been designed to collect ambient CH<sub>4</sub> concentration data from across the Gloucester region. To gather a sufficient dataset for this baseline dataset an initial four week campaign was completed in August 2013. Since then, two additional runs were completed in January 2014 and October 2014.

Mobile monitoring (i.e. surveying methane concentrations using an instrument mounted within a vehicle) was completed over 202 km each week. Further detail as to site selection is provided in **Section 3.3**. A stationary monitor was also installed as part of the August 2013 works to characterise CH<sub>4</sub> concentrations over time.

To complete the baseline survey of the Gloucester area in August 2013 and January 2014, the monitoring was conducted over two weekdays with different days selected each week to remove the potential for systematic bias in the sampling. On each day the selected route was completed in either the morning or afternoon to account for potential diurnal variation in CH<sub>4</sub>.

An additional baseline run of the Gloucester area was undertaken in October 2014, the monitoring was conducted over one weekday. On this day the selected route was completed in the morning and afternoon to account for potential diurnal variation in CH<sub>4</sub>.

### 3.2 Instrumentation

The samples were analysed using a Picarro G-2031-i Cavity Ring Down Spectrometer (Picarro) that measures the CH<sub>4</sub> concentrations and corresponding  $\delta^{13}\text{C-CH}_4$ . The Picarro was operated in high precision mode.

The Picarro monitoring system was configured for this mobile monitoring campaign, measuring CH<sub>4</sub> concentration, isotopic values for CH<sub>4</sub> along with GPS coordinates. The system components are housed within an AGL vehicle (Toyota Land Cruiser Troop Carrier) and configured to meet the recommendations of the Picarro Mobile Kit User's Guide (**Picarro, 2011**). **Figure 3-1** provides an image of the mobile set up used in the AGL field study.

A second Picarro (G-2201-i) was also installed to provide continuous CH<sub>4</sub> concentration measurements at one location.

The Picarro has been used extensively in other overseas studies (**Phillips et al., 2012**) and in Australia as outlined in the *Initial report on the Independent Review of Coal Seam Gas Activities in NSW* (**CS&E, 2013**).

#### 3.2.1 Calibration

Prior to the commencement of the monitoring campaign the Picarro was calibrated using CSIRO's calibration gases located at their Energy Technology Centre in Mayfield West, NSW.

To ensure the ongoing accuracy and consistency of the CH<sub>4</sub> concentrations, weekly single point calibrations were completed using bottled CH<sub>4</sub> gas of known concentration. On a monthly basis, multi-point calibrations were completed over a range of known CH<sub>4</sub> concentrations to ensure instrument linearity. All calibrations were completed using National Association of Testing Authority (NATA) certified calibration gases.

All calibration during the monitoring period showed little deviation in the CH<sub>4</sub> concentration measurements with time, and extremely good instrument linearity.



Figure 3-1: AGL mobile monitoring kit

### 3.3 Mobile monitoring route

To meet the objective of this screening baseline study 'to determine the concentrations of CH<sub>4</sub> that are typically experienced at locations within the Gloucester Gas Project area', the monitoring program has been designed to measure CH<sub>4</sub> over a 202 km route around the Gloucester region.

**Figure 3-2** shows the routes used for the screening baseline study. **Table 3-1** provides a summary description of each route.

**Figure 3-2** also shows the location of AGL's Gloucester weather station. The second stationary Picarro was installed adjacent to the weather station so that meteorological influences can be accounted for in the CH<sub>4</sub> concentration measurements.

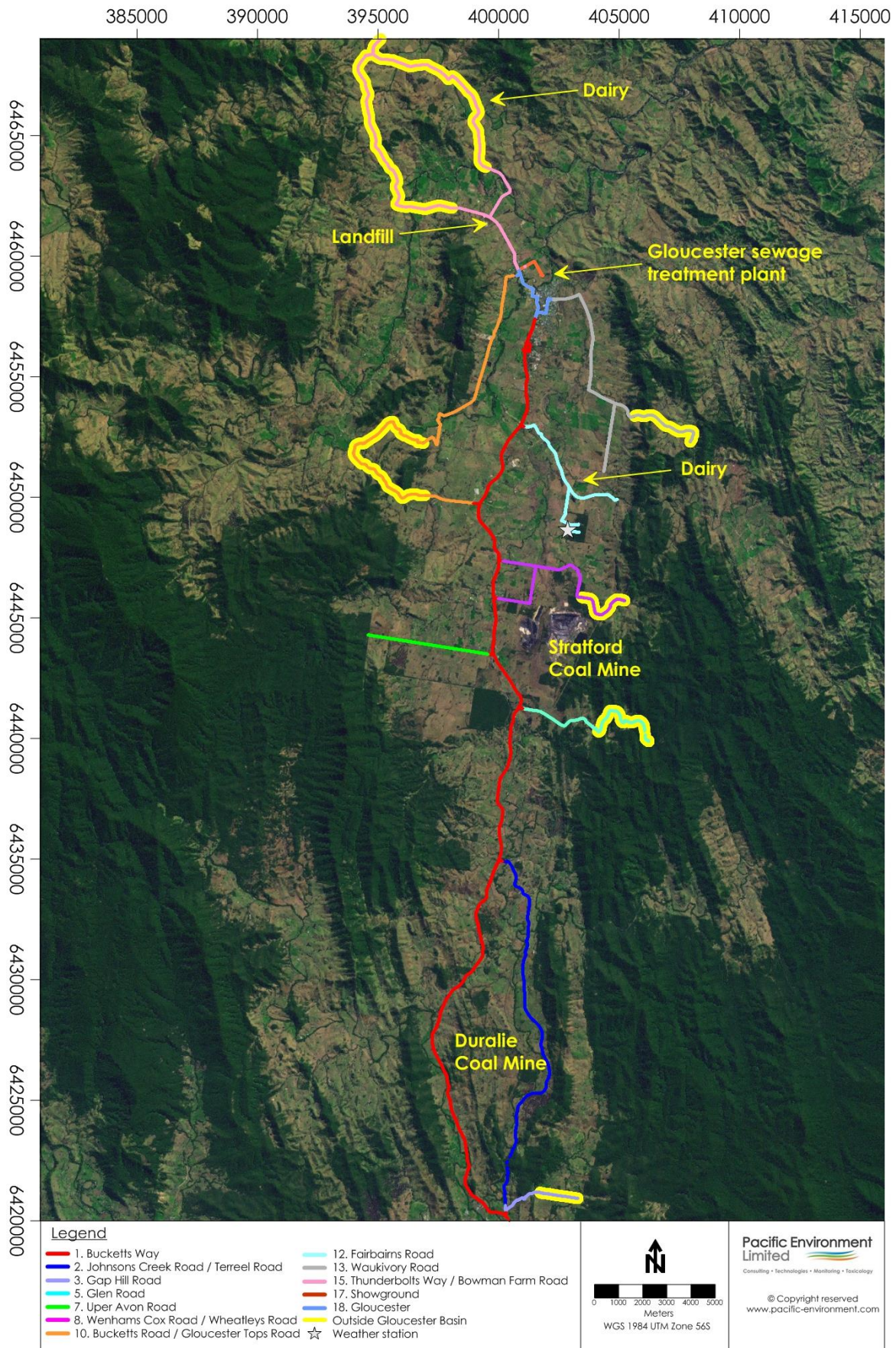


Figure 3-2: Monitoring routes

**Table 3-1: Description of monitoring locations**

Site number	Site description	Location relative to Gloucester geological basin (coal measures)
Route 1	Bucketts Way	Inside Basin
Route 2	Johnsons Creek Road / Terreel Road	Inside Basin
Route 3	Gap Hill Road	Inside Basin
Route 4	Gap Hill Road	Outside Basin
Route 5	Glen Road	Inside Basin
Route 6	Glen Road	Outside Basin
Route 7	Upper Avon Road	Inside Basin
Route 8	Wenhams Cox Road / Wheatleys Road	Inside Basin
Route 9	Wenhams Cox Road / Wheatleys Road	Outside Basin
Route 10	Bucketts Road / Gloucester Tops Road	Inside Basin
Route 11	Bucketts Road / Gloucester Tops Road	Outside Basin
Route 12	Fairbairns Road	Inside Basin
Route 13	Waukivory Road	Inside Basin
Route 14	Waukivory Road	Outside Basin
Route 15	Thunderbolts Way / Bowman Farm Road	Inside Basin
Route 16	Thunderbolts Way / Bowman Farm Road	Outside Basin
Route 17	Showground	Inside Basin
Route 18	Gloucester	Inside Basin

## 4 RESULTS AND DISCUSSION

At the time of writing only the baseline component of the monitoring program has been completed. A summary of the dates and whether the run was completed in the morning (7am – 12pm) or afternoon (12pm – 6:30pm) are provided in **Table 4-1**.

**Table 4-1: Summary of monitoring runs**

Run number	Date	time
Run 1	29/07/2013	Afternoon
Run 2	30/07/2013	Morning
Run 3	06/08/2013	Afternoon
Run 4	07/08/2013	Morning
Run 5	14/08/2013	Afternoon
Run 6	15/08/2013	Morning
Run 7	19/08/2013	Afternoon
Run 8	20/08/2013	Morning
Run 9	21/01/2014	Afternoon
Run 10	22/01/2014	Morning
Run 11	20/10/2014	Morning
Run 12	20/10/2014	Afternoon



Provided in **Appendix A** are a series of maps showing the CH<sub>4</sub> concentrations as measured along each route measured on the day of the monitoring. Summary tables of the monitoring results for the 18 routes within the Gloucester area are provided as **Appendix B** (see **Figure 3-2** for the location of each route). A time series during the initial four week campaign of the CH<sub>4</sub> concentration data measured at the stationary monitoring site is presented in **Appendix C**.

A significant amount of data has been collected during the 12 monitoring runs completed to date. Rather than discussing all monitoring results, additional discussion is provided where elevated CH<sub>4</sub> concentrations were measured or field observations warranted further investigation.

For the purposes of this study, a CH<sub>4</sub> concentration is considered 'elevated' if the concentration shows to be above the global average of 1.8 ppm for 2012 as established by **WMO (2014)**.

#### 4.1 Key findings

The following points provide an overview of the monitoring results:

- The 1 second interval CH<sub>4</sub> concentration of CH<sub>4</sub> ranged between 1.7 ppm to 3.9 ppm across all routes and runs investigated during the field campaign.
- The highest 1-second CH<sub>4</sub> concentration was 3.9 ppm measured near the showground (Route 17) during Run 5 (see **Table 4-1**). The  $\delta^{13}\text{C-CH}_4$  values measured on this route were also shown to be more negative (i.e. more biogenic) than values measured along other routes during this week. Route 17 is located adjacent to sewage treatment plant.
- On average, the CH<sub>4</sub> concentrations measured during mobile monitoring were lowest during Run 3.
- In general, CH<sub>4</sub> concentrations in the Gloucester area are considered low with an approximate baseline concentration of 1.8 ppm. This compares well with the global average background concentration report for 2012 by **WMO (2014)**.
- Route 17 (Showground) experienced the highest 1-second CH<sub>4</sub> concentrations, followed by Route 1 (Bucketts Way).
- There is negligible difference between the CH<sub>4</sub> concentrations measured inside and outside of the Gloucester Basin Coal Measures.
- At the stationary monitoring location the highest CH<sub>4</sub> concentration was 4.1 ppm, measured at 1:43am on 31 August 2013.
- The stationary monitoring data indicate that there is a diurnal trend in CH<sub>4</sub> concentration, with the highest levels occurring during the late evening and early hours of the morning. This is most likely associated with meteorological conditions (i.e. low atmospheric mixing heights due to temperature inversion conditions).
- Temperature inversion conditions show negligible influence on CH<sub>4</sub> concentrations in the Gloucester area measured using mobile monitoring. This is likely due to the mobile monitoring not capturing the hours of the day (i.e. 10 pm to 4am) when CH<sub>4</sub> concentration is shown to be higher as evidenced with the data from the stationary monitoring site.
- Based on field observations and results of similar studies in Camden (**Pacific Environment, 2014**) in addition to scientific literature (**Montiel et al., 2011; Dlugokencky et al., 2011**) sources of CH<sub>4</sub> in the Gloucester area have been identified and include:
  - Landfill
  - Sewage treatment Plant
  - Agriculture
- The average  $\delta^{13}\text{C-CH}_4$  ranged between -37‰ and -46‰. It should be noted that these are averaged values, where the 1 second measurements fluctuate significantly.

## 5 CONCLUSION

This interim monitoring report provides the baseline results and high level analysis of a mobile monitoring campaign measuring the concentration and  $\delta^{13}\text{C}\text{-CH}_4$  of  $\text{CH}_4$  in the Gloucester area completed by Pacific Environment on behalf of AGL.

This study is considered to represent a baseline analysis of the current conditions in the vicinity of the Gloucester Gas Project that is currently being developed by AGL.

In general, and based on data collected to date,  $\text{CH}_4$  concentrations in the Gloucester area are considered low with an approximate baseline concentration of 1.8 ppm.

The  $\text{CH}_4$  concentrations measured in the study area are considered close to the global average background concentrations report by **WMO (2014)**.

The highest  $\text{CH}_4$  concentrations were observed along Route 17 (Showground), adjacent to the sewage treatment plant with a 1-second  $\text{CH}_4$  concentration of 3.9 ppm.

Sources of  $\text{CH}_4$  in the Gloucester have been identified and include:

- Landfill
- Sewage treatment Plant
- Agriculture.

## 6 REFERENCES

Chief Scientist and Engineer (CS&E) (2013), Initial report on the Independent Review of Coal Seam Gas Activities in NSW, prepared for the Premier of NSW, July 2013.

Dlugokencky, et al. (2011), Global atmospheric methane: budget, changes and dangers, *Phil. Trans.R. Soc. A*, 369, 2058–2072.

Intergovernmental Panel on Climate Change (IPCC) AR5 (2013), Intergovernmental Panel on Climate Change Fifth Assessment Report.

Lowry et al. (2001), London methane emissions: Use of diurnal changes in concentration and  $^{13}\text{C}$  to identify urban sources and verify inventories. *Journal of Geophysical Research* 106, 7424-7448.

Montiel, G. (2011), Interpreting methane variation in the past two decades using measurements of  $\text{CH}_4$  mixing ratio and isotopic composition, *Atmospheric Chemistry and Physics*, 11, 9141-9153.

National Aeronautics and Space Administration Goddard Institute for Space Studies (NASA GISS) (2013), website: [http://www.giss.nasa.gov/research/features/200409\\_methane/](http://www.giss.nasa.gov/research/features/200409_methane/), cited 8 August 2013.

Picarro (2011), Picarro Mobile Kit User's Guide.

Phillips et al., (2012), Mapping urban pipeline leaks: Methane leaks across Boston, *Environmental Pollution* 173, 1-4.

United States Environmental Protection Agency (US EPA) (2014), <http://www.epa.gov/ttn/atw/188polls.html>.

World Meteorological Organisation (WMO) (2014) WMO Greenhouse Gas Bulletin, September 2014.

---

**Appendix A SPATIAL DISTRIBUTION OF METHANE CONCENTRATIONS BY MONITORING  
RUN**

---

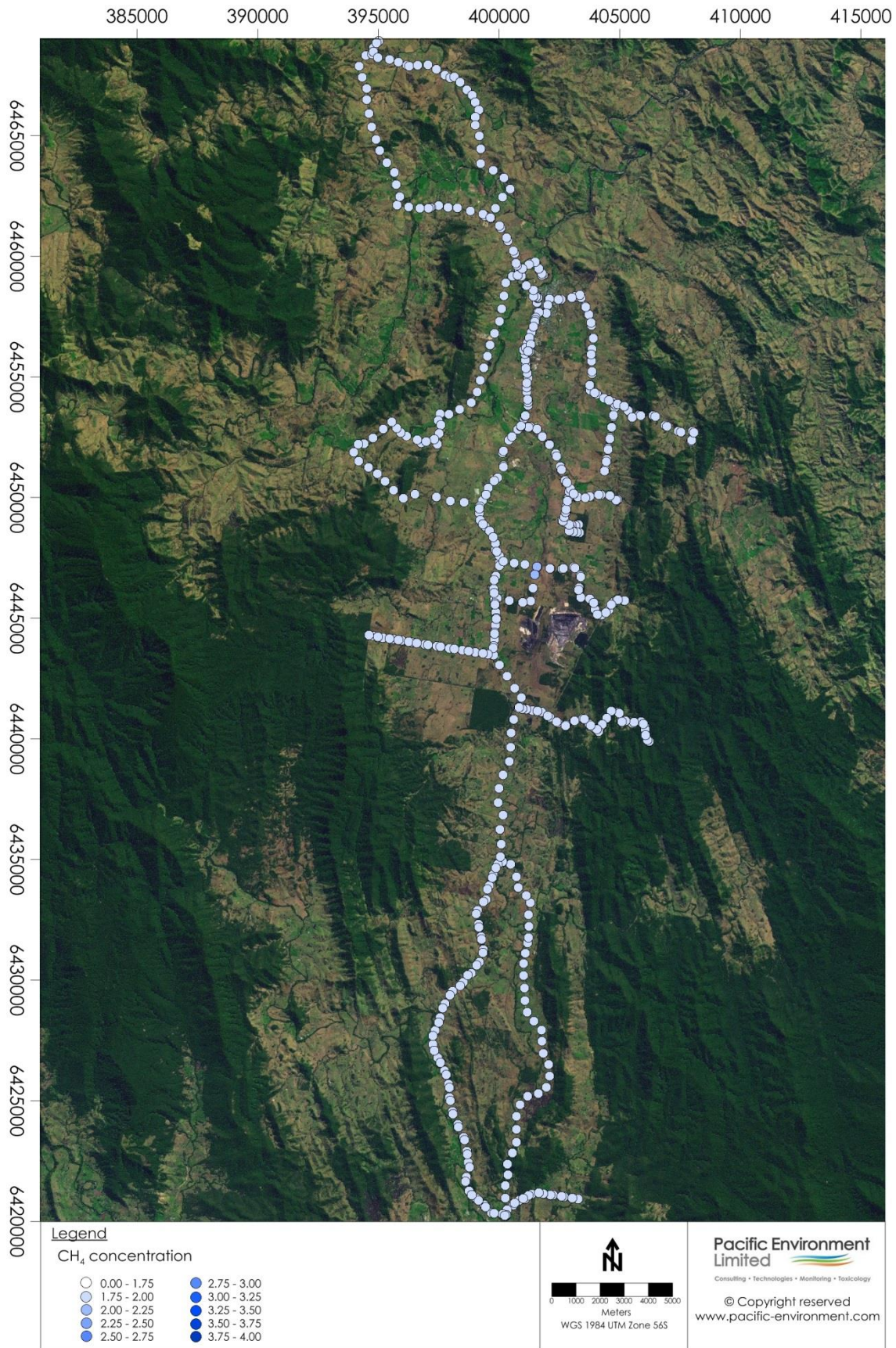


Figure A- 1: CH<sub>4</sub> concentration for Run 1 (29/07/2013 – Afternoon)

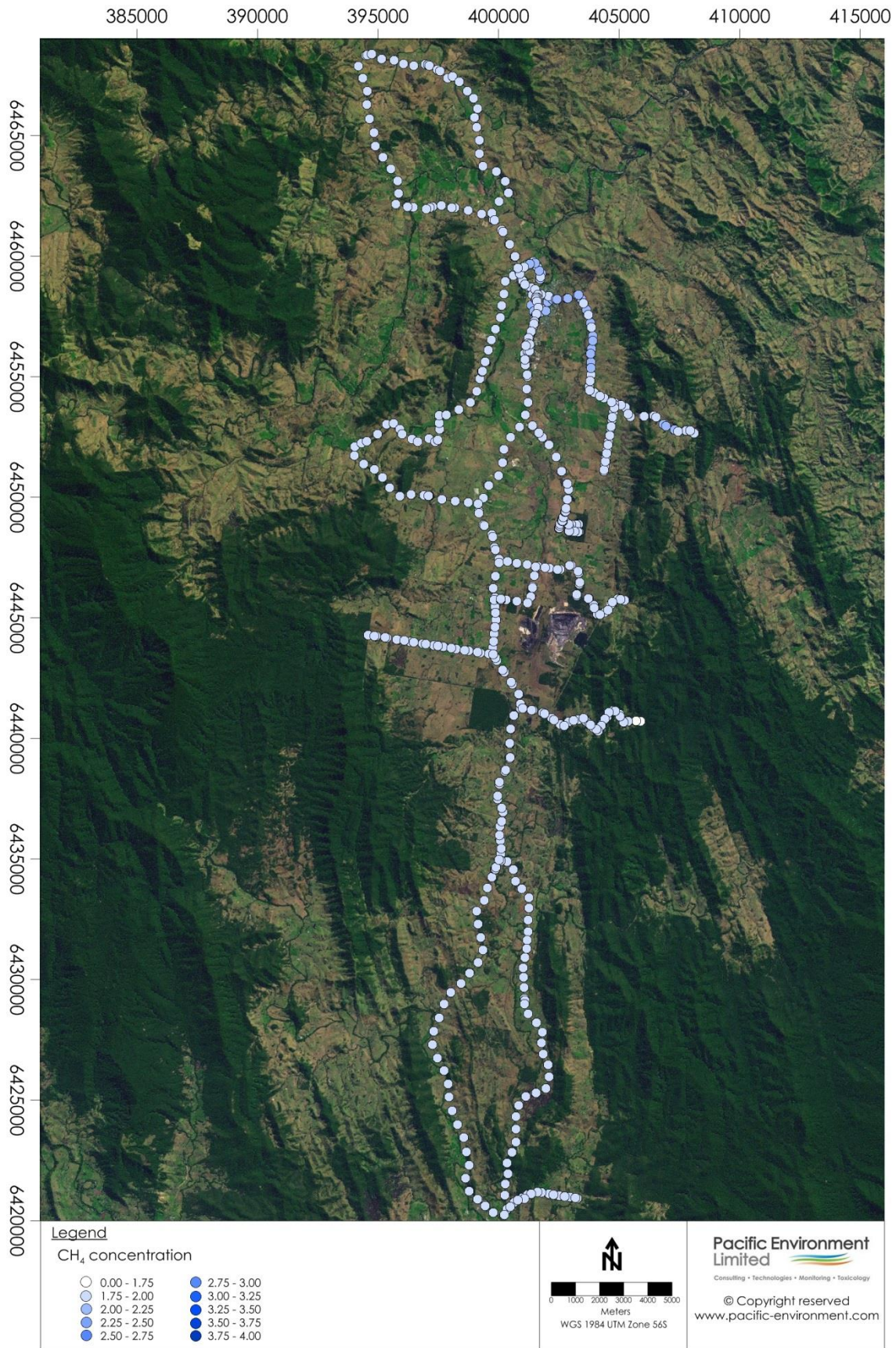


Figure A- 2: CH<sub>4</sub> concentration for Run 2 (30/07/2013 – Morning)

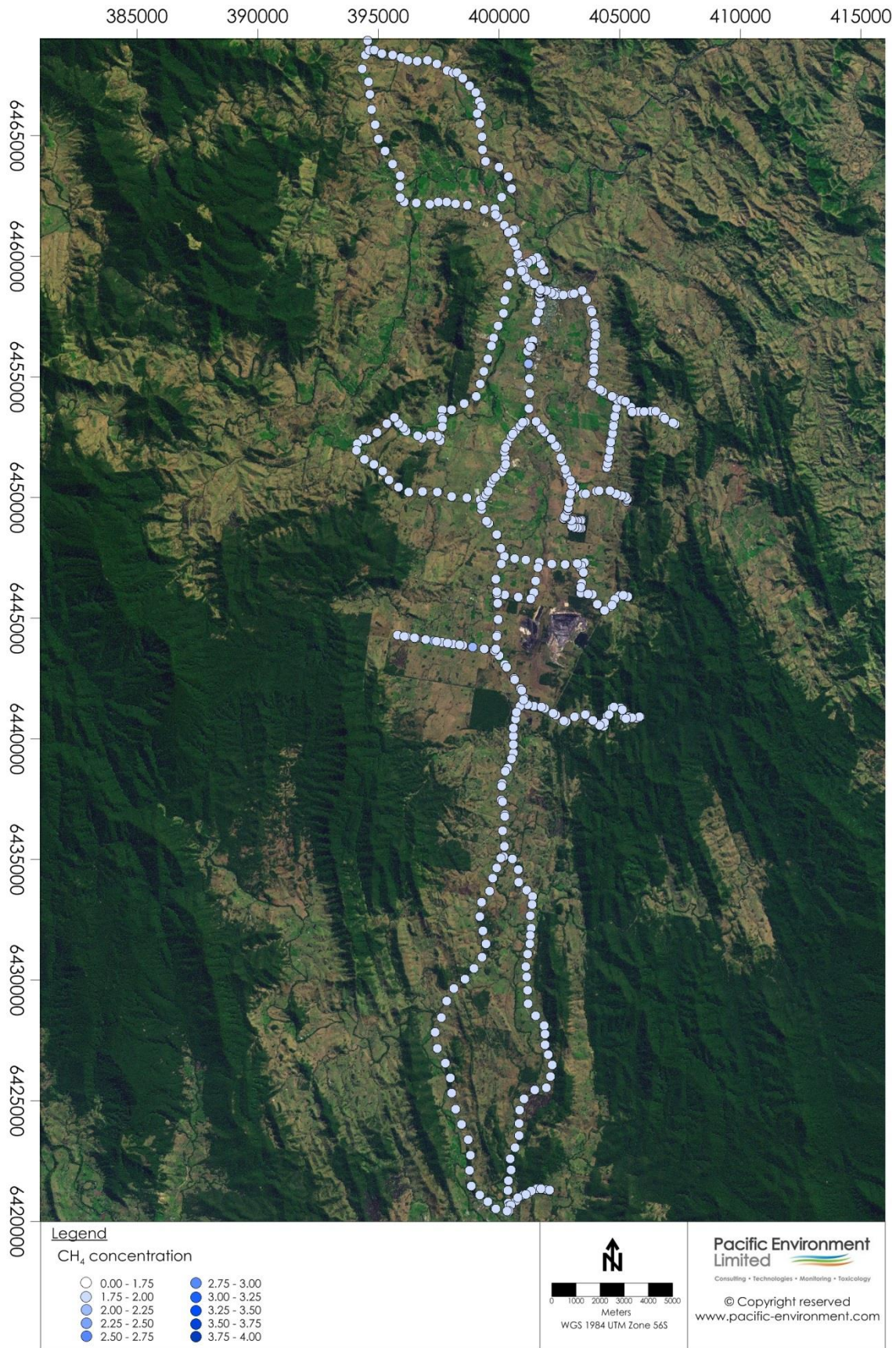
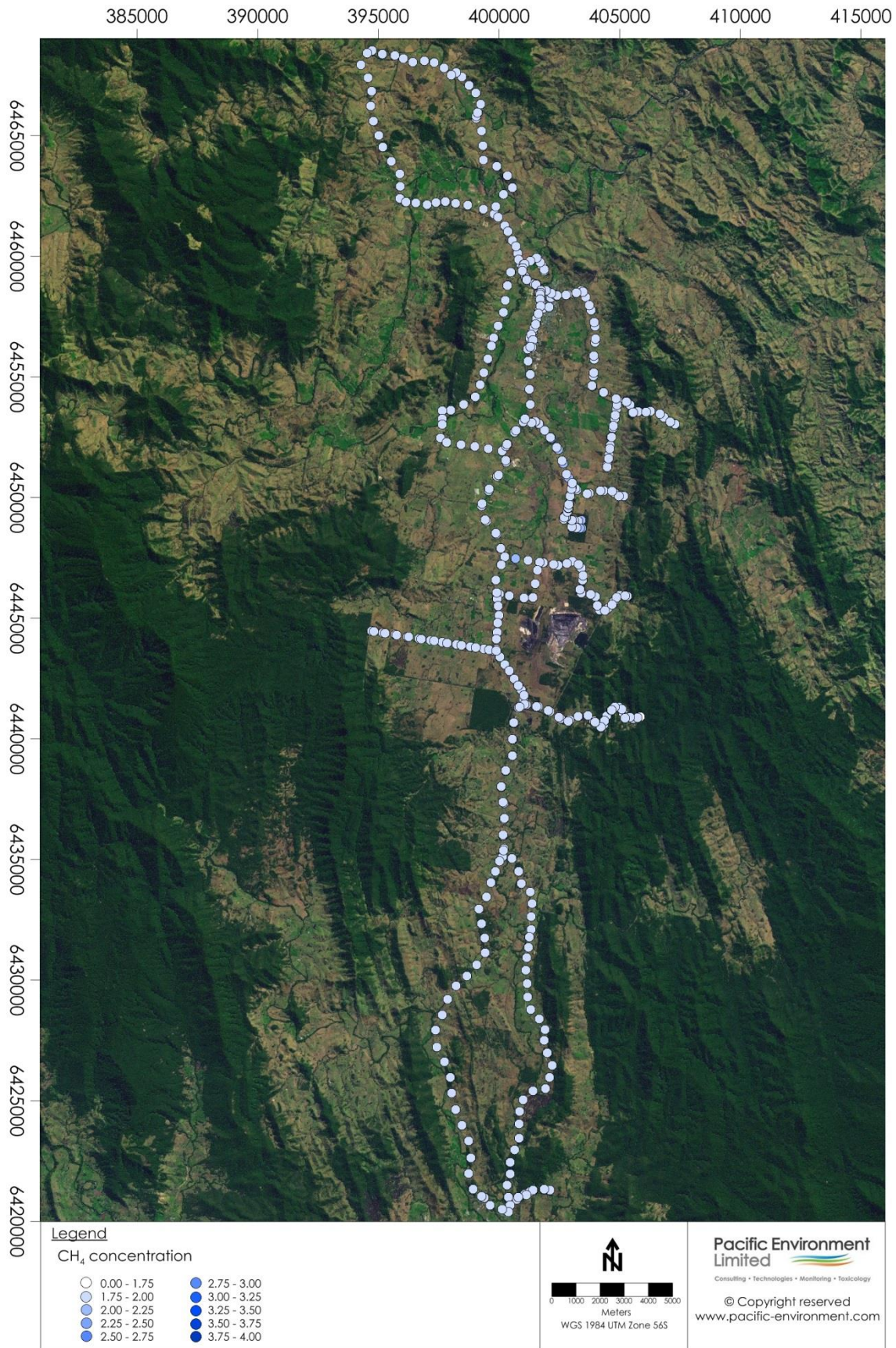


Figure A- 3: CH<sub>4</sub> concentration for Run 3 (06/08/2013 – Afternoon)



**Figure A- 4: CH<sub>4</sub> concentration for Run 4 (07/08/2013 – Morning)**



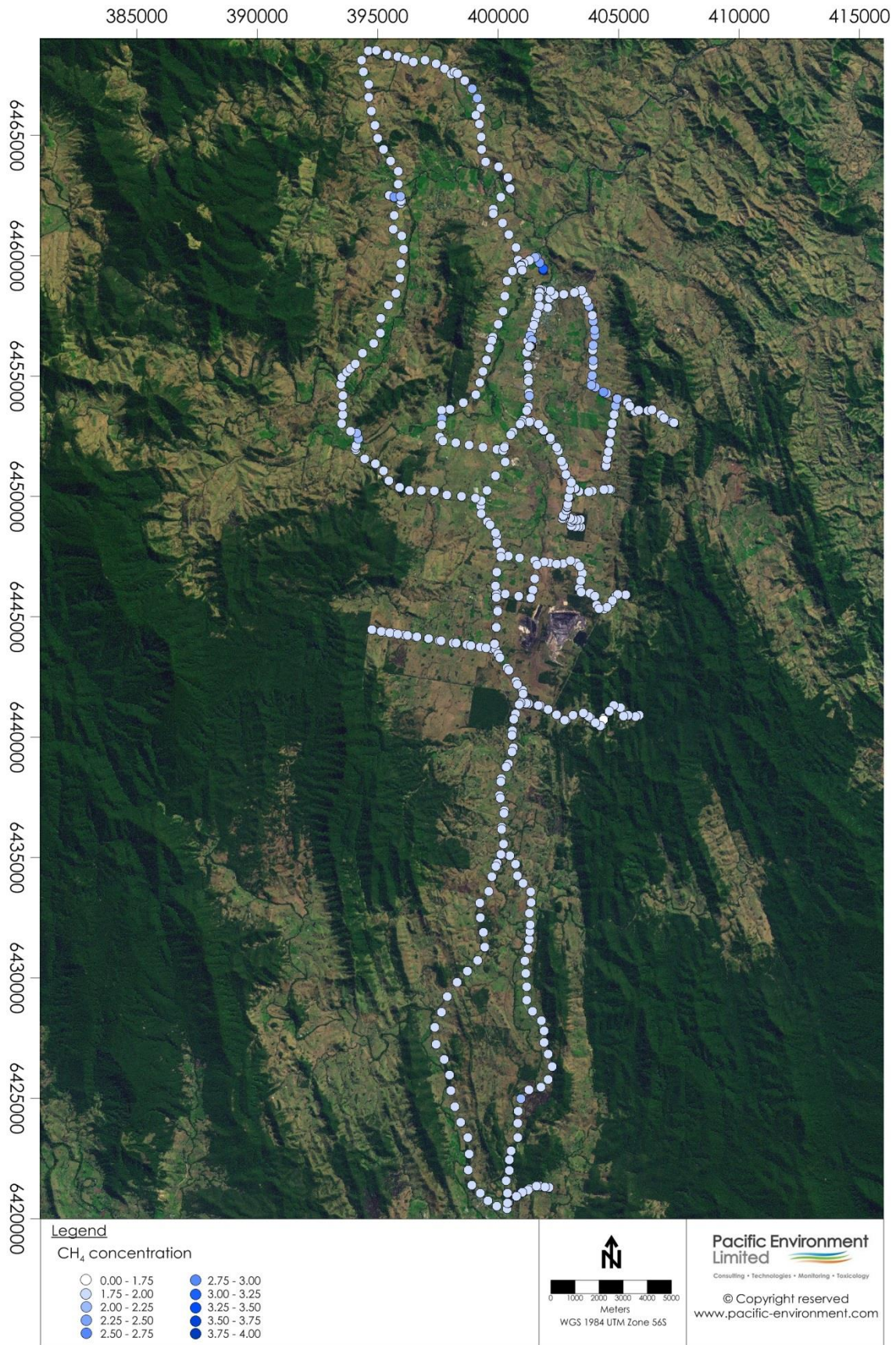


Figure A- 5: CH<sub>4</sub> concentration for Run 5 (14/08/2013 – Afternoon)

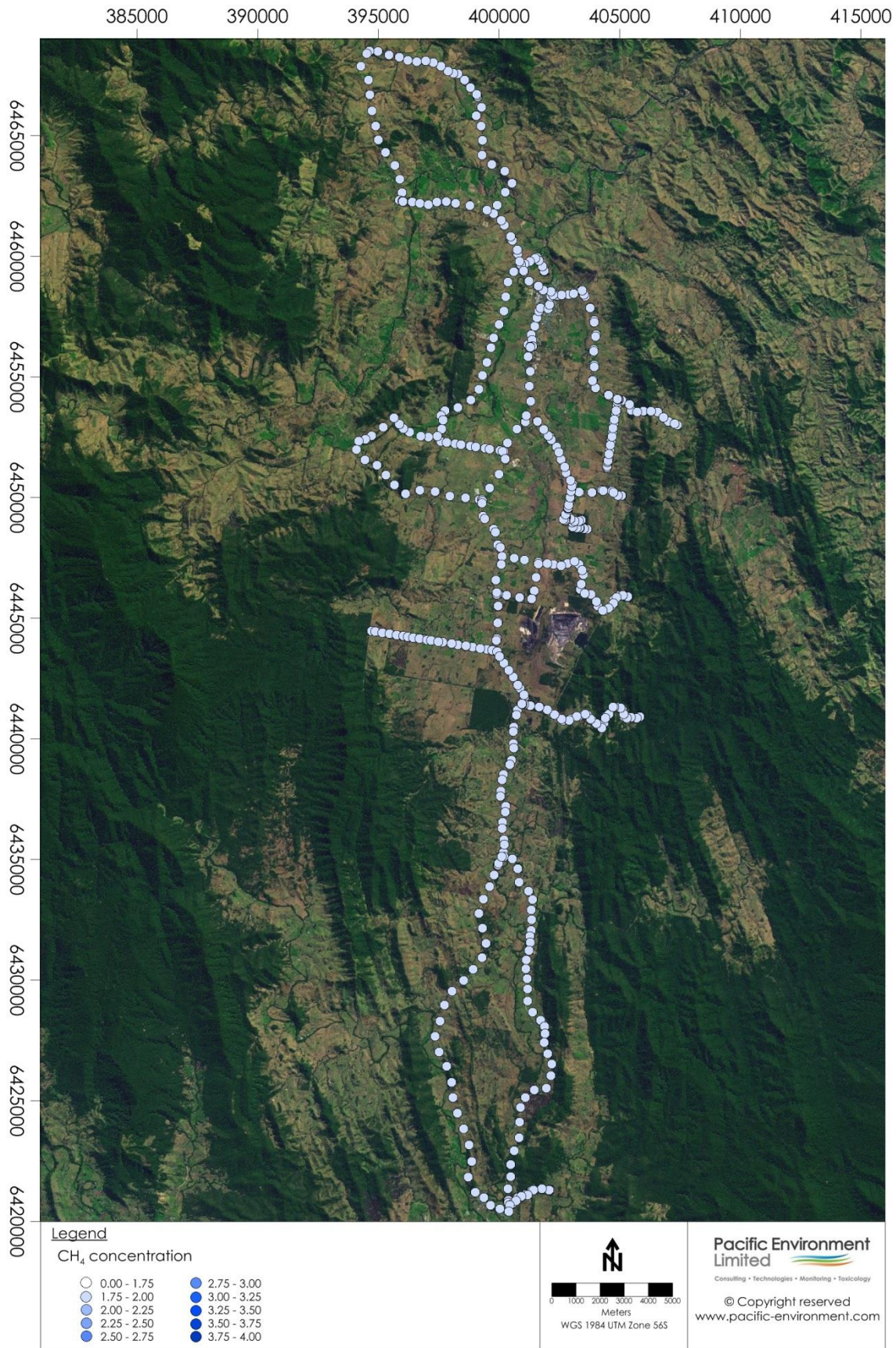


Figure A- 6: CH<sub>4</sub> concentration for Run 6 (15/08/2013 – Morning)

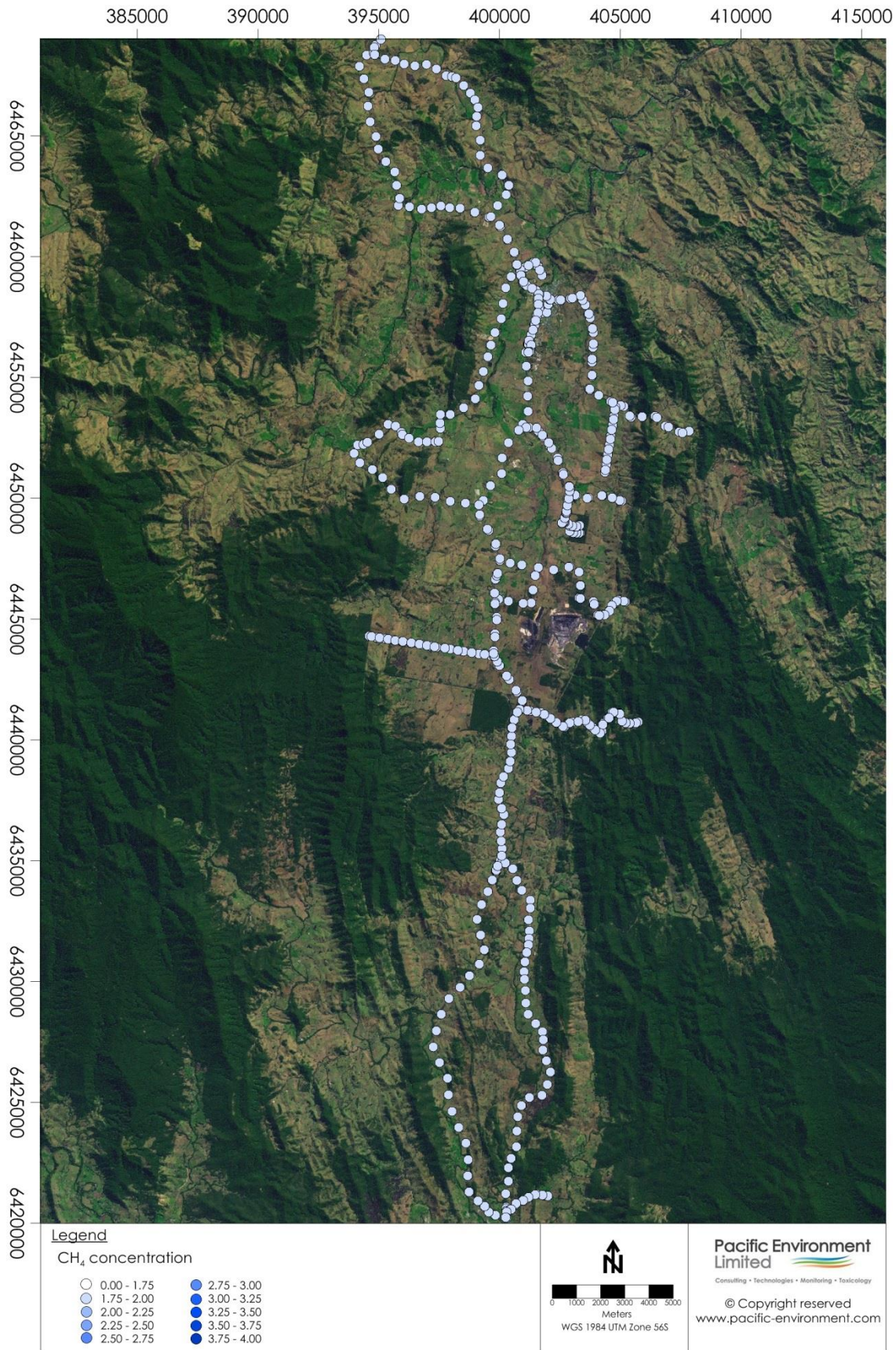


Figure A- 7: CH<sub>4</sub> concentration for Run 7 (19/08/2013 – Afternoon)

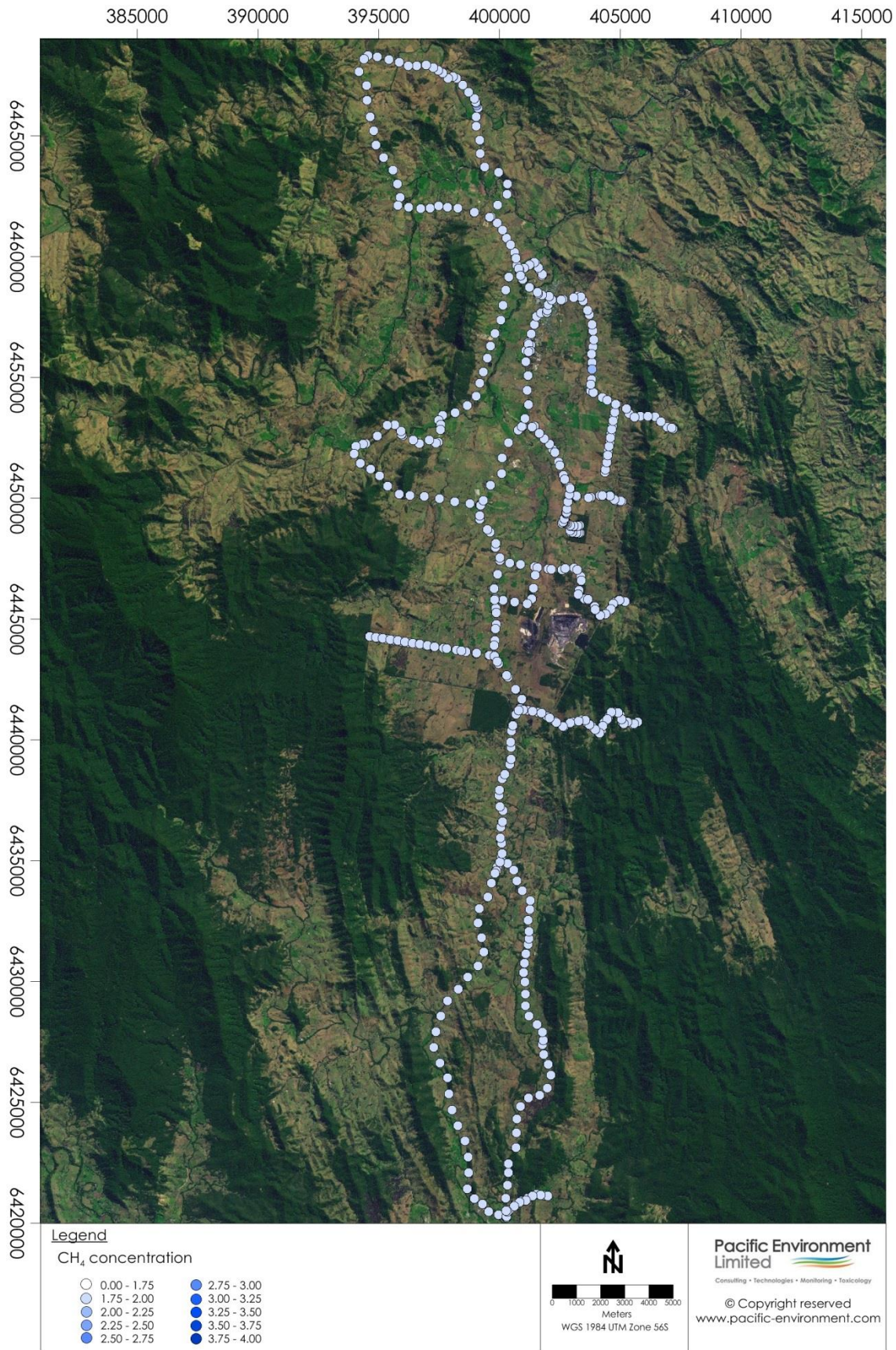


Figure A- 8: CH<sub>4</sub> concentration for Run 8 (20/08/2013 – Morning)

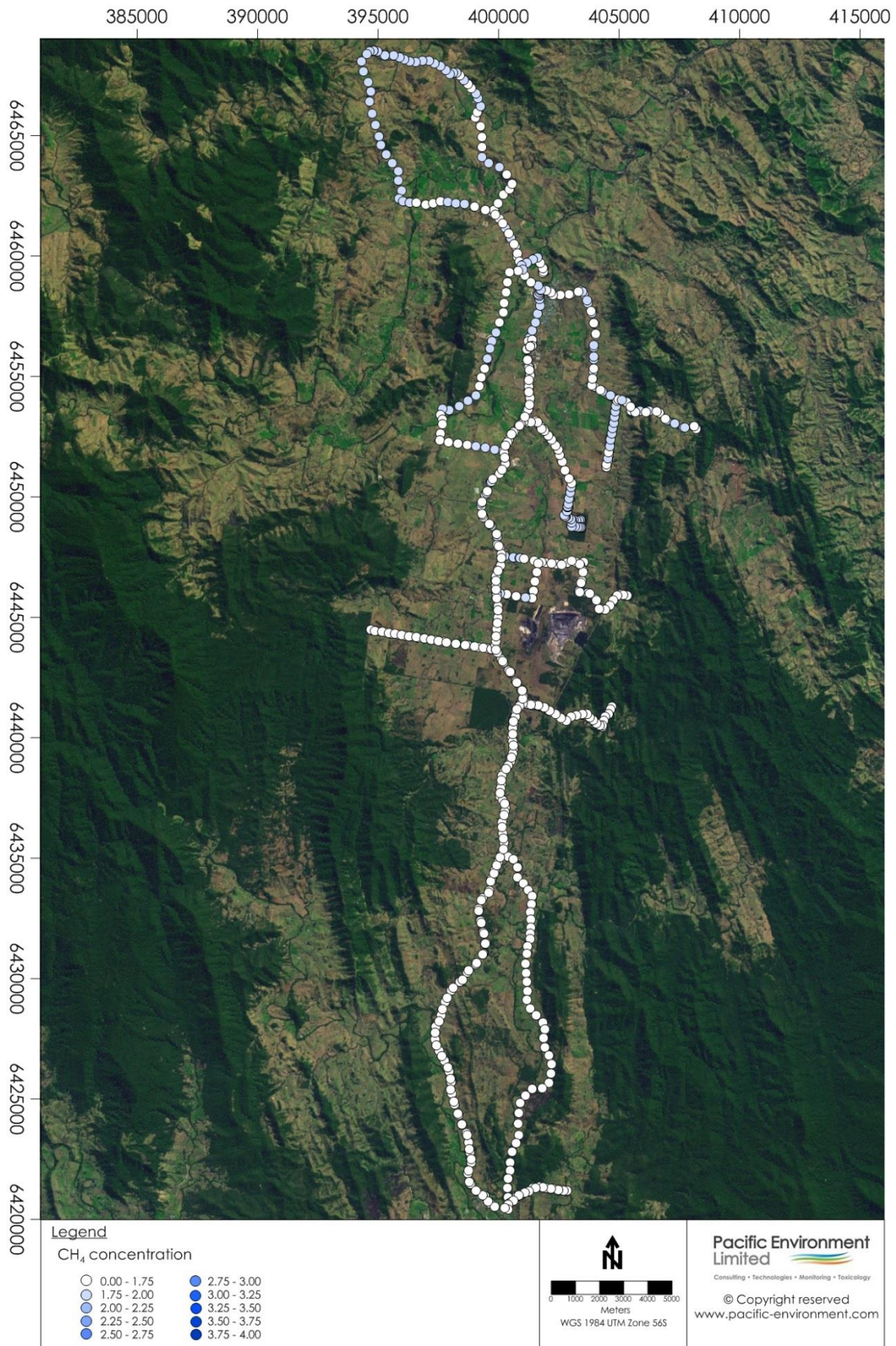


Figure A- 9: CH<sub>4</sub> concentration for Run 9 (21/01/2014 – Afternoon)

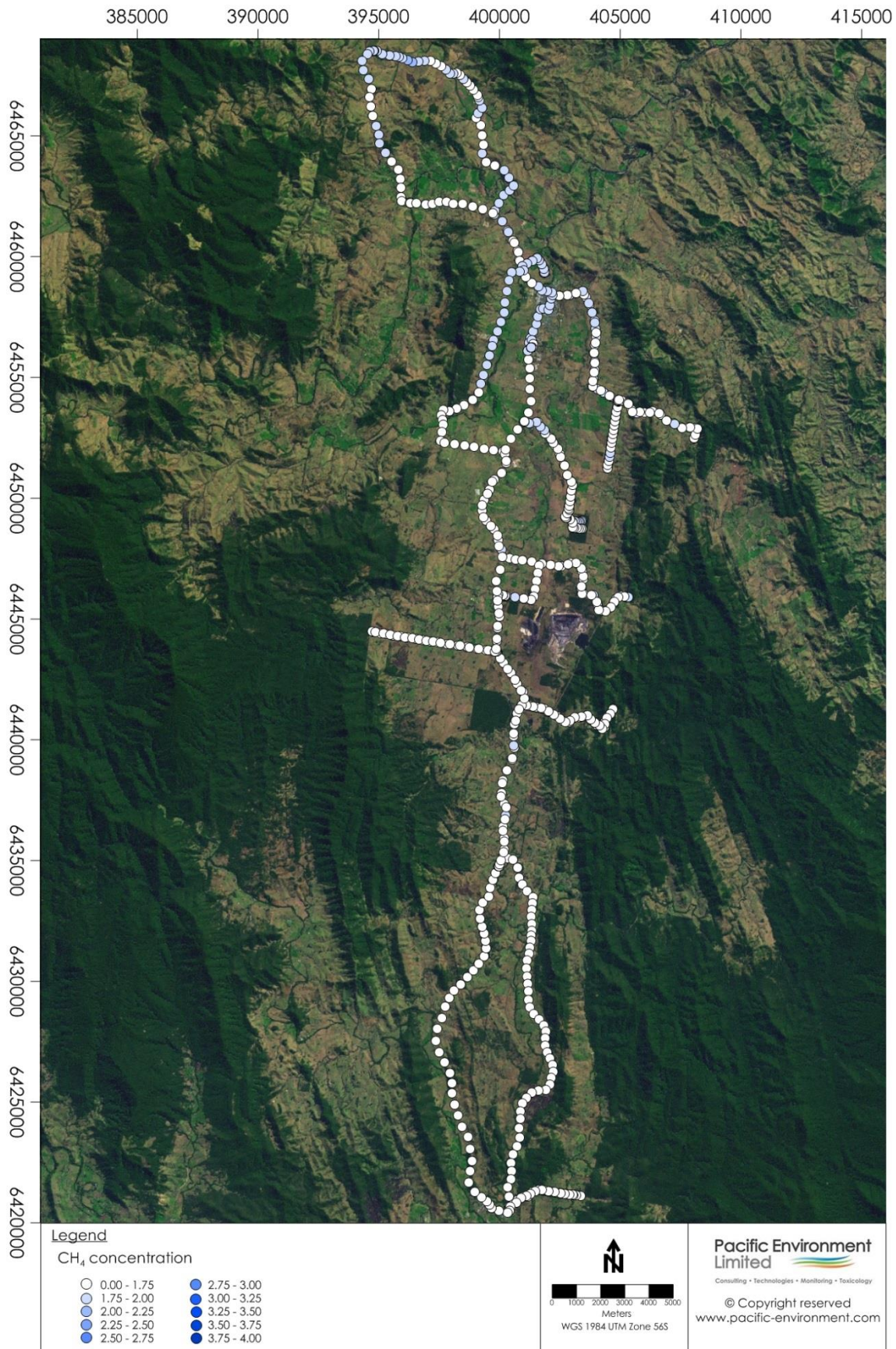


Figure A- 10: CH<sub>4</sub> concentration for Run 10 (22/01/2014 – Morning)

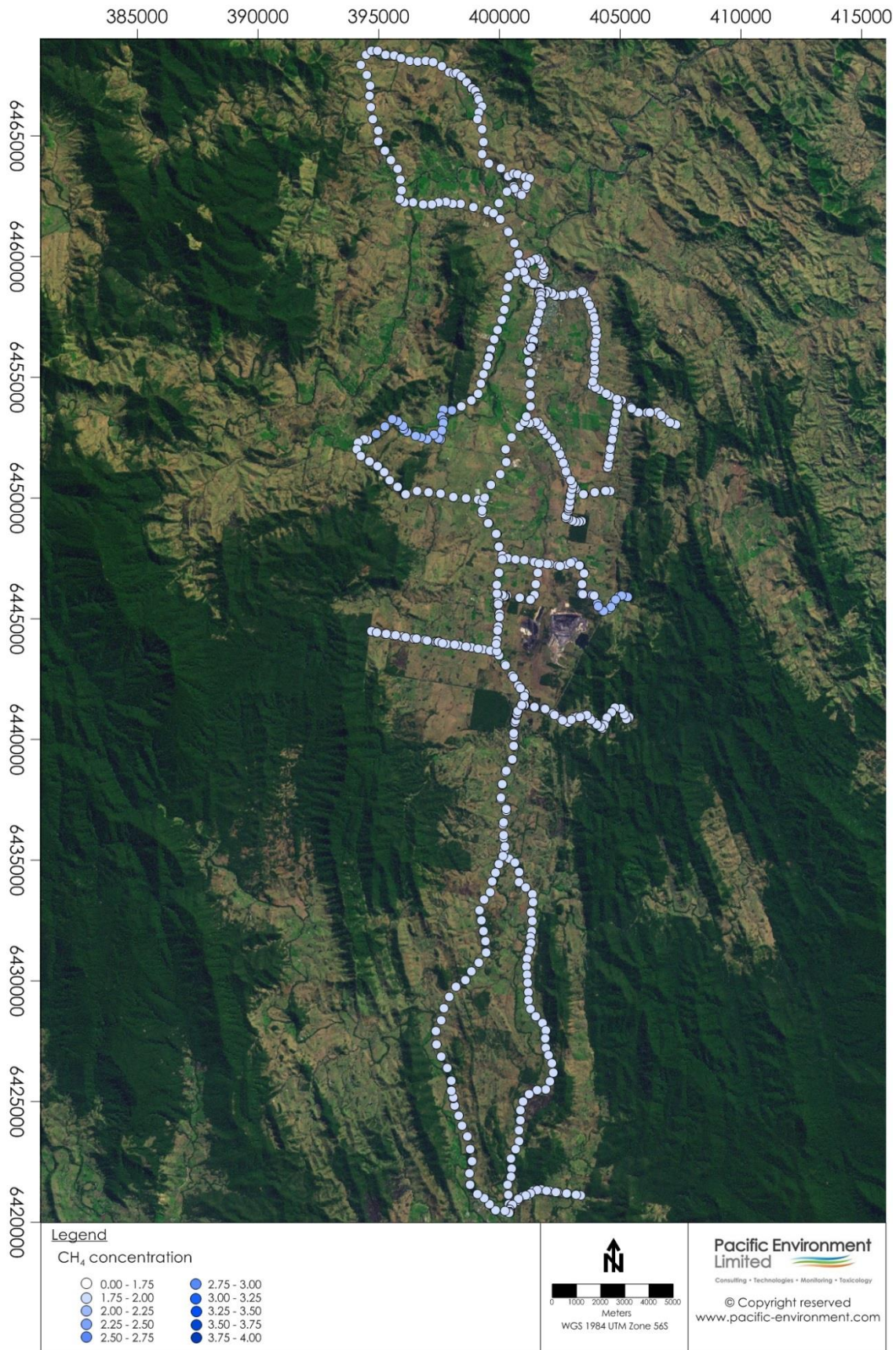


Figure A- 11: CH<sub>4</sub> concentration for Run 11 (20/10/2014 – Morning)

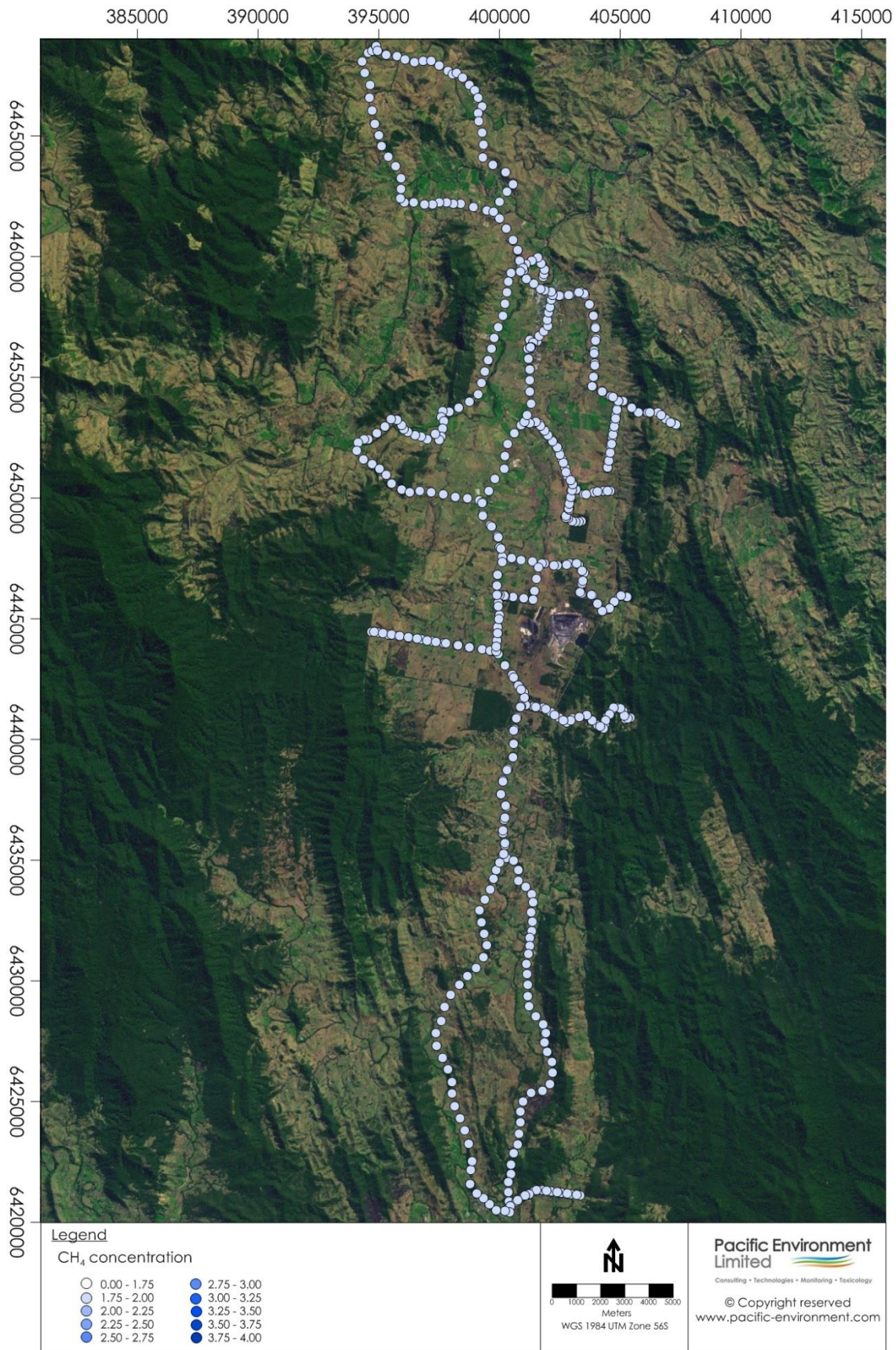


Figure A- 12: CH<sub>4</sub> concentration for Run 12 (20/10/2014 – Afternoon)



---

**Appendix B TABULATED RESULTS**

---

**Table B- 1: CH<sub>4</sub> concentration for Run 1 (29/07/2013 – Afternoon)**

Site number	Date	Weather conditions	Average CH <sub>4</sub> (ppm)	Minimum CH <sub>4</sub> (ppm)	Maximum CH <sub>4</sub> (ppm)	Average δ <sup>13</sup> C-CH <sub>4</sub> (‰)
<b>Route 1</b>	29/07/2013	Clear	1.8	1.8	2.2	-39
<b>Route 2</b>	29/07/2013	Clear	1.8	1.8	1.8	-40
<b>Route 3</b>	29/07/2013	Clear	1.8	1.8	1.8	-41
<b>Route 4</b>	29/07/2013	Clear	1.8	1.8	1.8	-40
<b>Route 5</b>	29/07/2013	Clear	1.8	1.8	1.8	-38
<b>Route 6</b>	29/07/2013	Clear	1.8	1.8	1.8	-39
<b>Route 7</b>	29/07/2013	Clear	1.8	1.8	1.9	-42
<b>Route 8</b>	29/07/2013	Clear	1.9	1.8	2.1	-41
<b>Route 9</b>	29/07/2013	Clear	1.8	1.8	1.9	-41
<b>Route 10</b>	29/07/2013	Clear	1.8	1.8	2.0	-41
<b>Route 11</b>	29/07/2013	Clear	1.8	1.8	2.0	-41
<b>Route 12</b>	29/07/2013	Clear	1.8	1.8	2.0	-41
<b>Route 13</b>	30/07/2013	Clear	1.8	1.8	1.8	-41
<b>Route 14</b>	30/07/2013	Clear	1.8	1.8	1.8	-39
<b>Route 15</b>	29/07/2013	Clear	1.8	1.8	1.9	-40
<b>Route 16</b>	29/07/2013	Clear	1.8	1.8	1.8	-41
<b>Route 17</b>	29/07/2013	Clear	1.8	1.8	2.0	-39
<b>Route 18</b>	29/07/2013	Clear	1.8	1.8	1.9	-37

**Table B- 2: CH<sub>4</sub> concentration for Run 2 (30/07/2013 – Morning)**

Site number	Date	Weather conditions	Average CH <sub>4</sub> (ppm)	Minimum CH <sub>4</sub> (ppm)	Maximum CH <sub>4</sub> (ppm)	Average δ <sup>13</sup> C-CH <sub>4</sub> (‰)
<b>Route 1</b>	30/07/2013	Clear	1.9	1.8	2.2	-41
<b>Route 2</b>	30/07/2013	Clear	1.8	1.8	1.8	-41
<b>Route 3</b>	30/07/2013	Clear	1.8	1.8	1.8	-41
<b>Route 4</b>	30/07/2013	Clear	1.8	1.8	1.8	-44
<b>Route 5</b>	30/07/2013	Clear	1.8	1.8	1.9	-41
<b>Route 6</b>	30/07/2013	Clear	1.8	1.7	1.8	-42
<b>Route 7</b>	30/07/2013	Clear	1.8	1.8	1.8	-41
<b>Route 8</b>	30/07/2013	Clear	1.8	1.8	1.8	-40
<b>Route 9</b>	30/07/2013	Clear	1.8	1.8	1.8	-42
<b>Route 10</b>	30/07/2013	Clear	1.8	1.8	1.8	-40
<b>Route 11</b>	30/07/2013	Clear	1.8	1.8	1.8	-40
<b>Route 12</b>	30/07/2013	Clear	1.8	1.8	1.8	-40
<b>Route 13</b>	30/07/2013	Clear	1.9	1.8	2.2	-43
<b>Route 14</b>	30/07/2013	Clear	1.9	1.8	2.1	-43
<b>Route 15</b>	30/07/2013	Clear	1.8	1.8	2.0	-40
<b>Route 16</b>	30/07/2013	Clear	1.8	1.8	1.8	-41
<b>Route 17</b>	30/07/2013	Clear	2.0	1.9	2.2	-43
<b>Route 18</b>	30/07/2013	Clear	1.9	1.8	2.3	-42

**Table B- 3: CH<sub>4</sub> concentration for Run 3 (06/08/2013 – Afternoon)**

Site number	Date	Weather conditions	Average CH <sub>4</sub> (ppm)	Minimum CH <sub>4</sub> (ppm)	Maximum CH <sub>4</sub> (ppm)	Average δ <sup>13</sup> C-CH <sub>4</sub> (‰)
<b>Route 1</b>	6/08/2013	Clear	1.8	1.8	2.0	-39
<b>Route 2</b>	6/08/2013	Clear	1.8	1.8	1.9	-40
<b>Route 3</b>	6/08/2013	Clear	1.8	1.8	1.8	-38
<b>Route 4</b>	6/08/2013	Clear	1.9	1.8	1.9	-39
<b>Route 5</b>	6/08/2013	Clear	1.8	1.8	1.9	-39
<b>Route 6</b>	6/08/2013	Clear	1.8	1.8	1.8	-41
<b>Route 7</b>	6/08/2013	Clear	1.9	1.8	2.2	-41
<b>Route 8</b>	6/08/2013	Clear	1.8	1.8	1.9	-39
<b>Route 9</b>	6/08/2013	Clear	1.8	1.8	1.8	-40
<b>Route 10</b>	6/08/2013	Clear	1.8	1.8	1.8	-41
<b>Route 11</b>	6/08/2013	Clear	1.8	1.8	1.8	-41
<b>Route 12</b>	6/08/2013	Clear	1.8	1.8	1.8	-40
<b>Route 13</b>	6/08/2013	Clear	1.8	1.8	1.8	-40
<b>Route 14</b>	6/08/2013	Clear	1.8	1.8	1.8	-40
<b>Route 15</b>	6/08/2013	Clear	1.8	1.8	1.8	-40
<b>Route 17</b>	6/08/2013	Clear	1.8	1.8	1.9	-41
<b>Route 18</b>	6/08/2013	Clear	1.8	1.8	1.8	-38

**Table B- 4: CH<sub>4</sub> concentration for Run 4 (07/08/2013 – Morning)**

Site number	Date	Weather conditions	Average CH <sub>4</sub> (ppm)	Minimum CH <sub>4</sub> (ppm)	Maximum CH <sub>4</sub> (ppm)	Average δ <sup>13</sup> C-CH <sub>4</sub> (‰)
<b>Route 1</b>	7/08/2013	Clear	1.8	1.8	2.0	-40
<b>Route 2</b>	7/08/2013	Clear	1.8	1.8	1.9	-42
<b>Route 3</b>	7/08/2013	Clear	1.8	1.8	1.8	-39
<b>Route 4</b>	7/08/2013	Clear	1.8	1.8	1.8	-39
<b>Route 5</b>	7/08/2013	Clear	1.8	1.8	1.8	-40
<b>Route 6</b>	7/08/2013	Clear	1.8	1.7	1.8	-44
<b>Route 7</b>	7/08/2013	Clear	1.8	1.8	1.8	-45
<b>Route 8</b>	7/08/2013	Clear	1.9	1.8	2.0	-42
<b>Route 9</b>	7/08/2013	Clear	1.8	1.8	1.8	-45
<b>Route 10</b>	7/08/2013	Clear	1.8	1.8	1.9	-40
<b>Route 11</b>	7/08/2013	Clear	1.9	1.8	2.3	-40
<b>Route 12</b>	7/08/2013	Clear	1.8	1.8	1.8	-42
<b>Route 13</b>	7/08/2013	Clear	1.8	1.8	1.8	-41
<b>Route 14</b>	7/08/2013	Clear	1.9	1.8	2.0	-40
<b>Route 15</b>	7/08/2013	Clear	1.8	1.8	2.0	-40
<b>Route 16</b>	7/08/2013	Clear	1.9	1.8	2.0	-39
<b>Route 17</b>	7/08/2013	Clear	1.8	1.8	2.0	-40
<b>Route 18</b>	7/08/2013	Clear	1.8	1.8	2.0	-40

**Table B- 5: CH<sub>4</sub> concentration for Run 5 (14/08/2013 – Afternoon)**

Site number	Date	Weather conditions	Average CH <sub>4</sub> (ppm)	Minimum CH <sub>4</sub> (ppm)	Maximum CH <sub>4</sub> (ppm)	Average δ <sup>13</sup> C-CH <sub>4</sub> (‰)
<b>Route 1</b>	14/08/2013	Clear	1.8	0.2	2.2	-40
<b>Route 2</b>	14/08/2013	Clear	1.8	1.8	2.0	-40
<b>Route 3</b>	14/08/2013	Clear	1.8	1.8	1.9	-41
<b>Route 4</b>	14/08/2013	Clear	1.9	1.8	1.9	-40
<b>Route 5</b>	14/08/2013	Clear	1.8	1.8	1.8	-40
<b>Route 6</b>	14/08/2013	Clear	1.8	1.7	1.8	-38
<b>Route 7</b>	14/08/2013	Clear	1.8	1.8	1.9	-40
<b>Route 8</b>	14/08/2013	Clear	1.8	1.8	1.9	-40
<b>Route 9</b>	14/08/2013	Clear	1.8	1.8	1.8	-40
<b>Route 10</b>	14/08/2013	Clear	1.9	1.8	2.1	-43
<b>Route 11</b>	14/08/2013	Clear	1.9	1.8	2.2	-40
<b>Route 12</b>	14/08/2013	Clear	1.8	1.8	1.8	-39
<b>Route 13</b>	14/08/2013	Clear	2.0	1.8	2.3	-42
<b>Route 14</b>	14/08/2013	Clear	2.0	1.9	2.1	-41
<b>Route 15</b>	14/08/2013	Clear	1.8	1.8	2.0	-40
<b>Route 16</b>	14/08/2013	Clear	1.9	1.8	2.3	-40
<b>Route 17</b>	14/08/2013	Clear	2.6	1.8	3.9	-46
<b>Route 18</b>	14/08/2013	Clear	1.9	1.8	1.9	-39

**Table B- 6: CH<sub>4</sub> concentration for Run 6 (15/08/2013 – Morning)**

Site number	Date	Weather conditions	Average CH <sub>4</sub> (ppm)	Minimum CH <sub>4</sub> (ppm)	Maximum CH <sub>4</sub> (ppm)	Average δ <sup>13</sup> C-CH <sub>4</sub> (‰)
<b>Route 1</b>	15/08/2013	Clear	1.8	1.8	1.8	-40
<b>Route 2</b>	15/08/2013	Clear	1.8	1.8	1.8	-42
<b>Route 3</b>	15/08/2013	Clear	1.8	1.8	1.8	-42
<b>Route 4</b>	15/08/2013	Clear	1.8	1.8	1.8	-44
<b>Route 5</b>	15/08/2013	Clear	1.8	1.8	1.8	-41
<b>Route 6</b>	15/08/2013	Clear	1.8	1.8	1.8	-42
<b>Route 7</b>	15/08/2013	Clear	1.8	1.8	1.8	-40
<b>Route 8</b>	15/08/2013	Clear	1.8	1.8	1.8	-40
<b>Route 9</b>	15/08/2013	Clear	1.8	1.8	1.8	-41
<b>Route 10</b>	15/08/2013	Clear	1.8	1.8	1.8	-38
<b>Route 11</b>	15/08/2013	Clear	1.8	1.8	1.8	-39
<b>Route 12</b>	15/08/2013	Clear	1.8	1.8	1.8	-41
<b>Route 13</b>	15/08/2013	Clear	1.8	1.8	1.8	-40
<b>Route 14</b>	15/08/2013	Clear	1.8	1.8	1.8	-37
<b>Route 15</b>	15/08/2013	Clear	1.8	1.8	1.8	-38
<b>Route 16</b>	15/08/2013	Clear	1.8	1.8	1.8	-39
<b>Route 17</b>	15/08/2013	Clear	1.8	1.8	1.8	-38
<b>Route 18</b>	15/08/2013	Clear	1.8	1.8	1.8	-38

**Table B- 7: CH<sub>4</sub> concentration for Run 7 (19/08/2013 – Afternoon)**

Site number	Date	Weather conditions	Average CH <sub>4</sub> (ppm)	Minimum CH <sub>4</sub> (ppm)	Maximum CH <sub>4</sub> (ppm)	Average δ <sup>13</sup> C-CH <sub>4</sub> (‰)
<b>Route 1</b>	19/08/2013	Clear	1.8	1.8	1.8	-40
<b>Route 2</b>	19/08/2013	Clear	1.8	1.8	1.8	-40
<b>Route 3</b>	19/08/2013	Clear	1.8	1.8	1.8	-40
<b>Route 4</b>	19/08/2013	Clear	1.8	1.8	1.8	-41
<b>Route 5</b>	19/08/2013	Clear	1.8	1.8	1.8	-42
<b>Route 6</b>	19/08/2013	Clear	1.8	1.7	1.8	-42
<b>Route 7</b>	19/08/2013	Clear	1.8	1.8	1.8	-41
<b>Route 8</b>	19/08/2013	Clear	1.8	1.8	1.8	-42
<b>Route 9</b>	19/08/2013	Clear	1.8	1.8	1.8	-42
<b>Route 10</b>	19/08/2013	Clear	1.8	1.8	1.8	-40
<b>Route 11</b>	19/08/2013	Clear	1.8	1.8	1.8	-41
<b>Route 12</b>	19/08/2013	Clear	1.8	1.8	1.8	-40
<b>Route 13</b>	19/08/2013	Clear	1.8	1.8	1.8	-38
<b>Route 14</b>	19/08/2013	Clear	1.8	1.8	1.8	-38
<b>Route 15</b>	19/08/2013	Clear	1.8	1.8	1.8	-40
<b>Route 16</b>	19/08/2013	Clear	1.8	1.8	1.8	-40
<b>Route 17</b>	19/08/2013	Clear	1.8	1.8	1.8	-39
<b>Route 18</b>	19/08/2013	Clear	1.8	1.8	1.8	-38



**Table B- 8: CH<sub>4</sub> concentration for Run 8 (20/08/2013 – Morning)**

Site number	Date	Weather conditions	Average CH <sub>4</sub> (ppm)	Minimum CH <sub>4</sub> (ppm)	Maximum CH <sub>4</sub> (ppm)	Average δ <sup>13</sup> C-CH <sub>4</sub> (‰)
<b>Route 1</b>	20/08/2013	Clear	1.8	1.8	2.8	-42
<b>Route 2</b>	20/08/2013	Clear	1.8	1.8	1.8	-42
<b>Route 3</b>	20/08/2013	Clear	1.8	1.8	1.8	-42
<b>Route 4</b>	20/08/2013	Clear	1.8	1.8	1.8	-38
<b>Route 5</b>	20/08/2013	Clear	1.8	1.8	1.8	-43
<b>Route 6</b>	20/08/2013	Clear	1.8	1.7	1.8	-41
<b>Route 7</b>	20/08/2013	Clear	1.8	1.8	1.8	-42
<b>Route 8</b>	20/08/2013	Clear	1.8	1.8	1.8	-43
<b>Route 9</b>	20/08/2013	Clear	1.8	1.8	1.8	-43
<b>Route 10</b>	20/08/2013	Clear	1.8	1.8	1.8	-41
<b>Route 11</b>	20/08/2013	Clear	1.8	1.8	1.8	-42
<b>Route 12</b>	20/08/2013	Clear	1.8	1.8	1.8	-42
<b>Route 13</b>	20/08/2013	Clear	1.8	1.8	2.1	-41
<b>Route 14</b>	20/08/2013	Clear	1.9	1.8	1.9	-41
<b>Route 15</b>	20/08/2013	Clear	1.8	1.8	1.9	-40
<b>Route 16</b>	20/08/2013	Clear	1.8	1.8	2.0	-39
<b>Route 17</b>	20/08/2013	Clear	1.9	1.8	1.9	-39
<b>Route 18</b>	20/08/2013	Clear	1.9	1.8	1.9	-40

Table B- 9: CH<sub>4</sub> concentration for Run 9 (21/01/2014 – Afternoon)

Site number	Date	Weather conditions	Average CH <sub>4</sub> (ppm)	Minimum CH <sub>4</sub> (ppm)	Maximum CH <sub>4</sub> (ppm)	Average δ <sup>13</sup> C-CH <sub>4</sub> (‰)
Route 1	21/01/2014	Clear	1.7	1.7	1.7	-41.4
Route 2	21/01/2014	Clear	1.7	1.7	1.7	-44.0
Route 3	21/01/2014	Clear	1.7	1.7	1.7	-43.2
Route 4	21/01/2014	Clear	1.7	1.7	1.7	-41.6
Route 5	21/01/2014	Clear	1.7	1.7	1.7	-44.0
Route 6	21/01/2014	Clear	1.7	1.7	1.7	-43.6
Route 7	21/01/2014	Clear	1.7	1.7	1.7	-39.2
Route 8	21/01/2014	Clear	1.7	1.7	1.7	-39.5
Route 9	21/01/2014	Clear	1.7	1.7	1.7	-39.1
Route 10	21/01/2014	Clear	1.8	1.7	1.7	-41.1
Route 11	21/01/2014	Clear	n/a	n/a	n/a	n/a
Route 12	21/01/2014	Clear	1.8	1.7	1.7	-41.9
Route 13	21/01/2014	Clear	1.8	1.7	1.7	-40.3
Route 14	21/01/2014	Clear	1.8	1.7	1.7	-39.5
Route 15	21/01/2014	Clear	1.7	1.7	1.7	-40.8
Route 16	21/01/2014	Clear	1.8	1.7	1.7	-41.3
Route 17	21/01/2014	Clear	1.7	1.7	1.7	-41.1
Route 18	21/01/2014	Clear	1.8	1.7	1.7	-40.0

**Table B- 10: CH<sub>4</sub> concentration for Run 10 (22/01/2014 – Morning)**

Site number	Date	Weather conditions	Average CH <sub>4</sub> (ppm)	Minimum CH <sub>4</sub> (ppm)	Maximum CH <sub>4</sub> (ppm)	Average δ <sup>13</sup> C-CH <sub>4</sub> (‰)
<b>Route 1</b>	22/01/2014	Clear	1.7	1.7	1.7	-42.9
<b>Route 2</b>	22/01/2014	Clear	1.7	1.7	1.7	-43.9
<b>Route 3</b>	22/01/2014	Clear	1.7	1.7	1.7	-40.9
<b>Route 4</b>	22/01/2014	Clear	1.7	1.7	1.7	-42.5
<b>Route 5</b>	22/01/2014	Clear	1.7	1.7	1.7	-41.3
<b>Route 6</b>	22/01/2014	Clear	1.7	1.7	1.7	-41.1
<b>Route 7</b>	22/01/2014	Clear	1.7	1.7	1.7	-42.5
<b>Route 8</b>	22/01/2014	Clear	1.8	1.7	1.7	-42.7
<b>Route 9</b>	22/01/2014	Clear	1.8	1.7	1.7	-40.9
<b>Route 10</b>	22/01/2014	Clear	1.7	1.7	1.7	-42.9
<b>Route 11</b>	22/01/2014	Clear	n/a	n/a	n/a	n/a
<b>Route 12</b>	22/01/2014	Clear	1.8	1.7	1.7	-42.0
<b>Route 13</b>	22/01/2014	Clear	1.7	1.7	1.7	-43.6
<b>Route 14</b>	22/01/2014	Clear	1.7	1.7	1.7	-42.2
<b>Route 15</b>	22/01/2014	Clear	1.8	1.7	1.7	-43.6
<b>Route 16</b>	22/01/2014	Clear	1.8	1.7	1.7	-44.4
<b>Route 17</b>	22/01/2014	Clear	1.8	1.7	1.7	-41.2
<b>Route 18</b>	22/01/2014	Clear	1.8	1.7	1.7	-43.1

**Table B- 11: CH<sub>4</sub> concentration for Run 11 (20/01/2014 – Morning)**

Site number	Date	Weather conditions	Average CH <sub>4</sub> (ppm)	Minimum CH <sub>4</sub> (ppm)	Maximum CH <sub>4</sub> (ppm)	Average δ <sup>13</sup> C-CH <sub>4</sub> (‰)
<b>Route 1</b>	20/10/2014	Overcast	1.8	1.8	2.0	n/a
<b>Route 2</b>	20/10/2014	Clear	1.8	1.8	1.8	n/a
<b>Route 3</b>	20/10/2014	Overcast	1.8	1.8	1.8	n/a
<b>Route 4</b>	20/10/2014	Overcast	1.8	1.8	1.8	n/a
<b>Route 5</b>	20/10/2014	Overcast	1.8	1.8	1.8	n/a
<b>Route 6</b>	20/10/2014	Overcast	1.8	1.8	1.9	n/a
<b>Route 7</b>	20/10/2014	Overcast	1.8	1.8	1.8	n/a
<b>Route 8</b>	20/10/2014	Overcast	1.9	1.8	2.0	n/a
<b>Route 9</b>	20/10/2014	Windy	2.0	2.0	2.0	n/a
<b>Route 10</b>	20/10/2014	Windy	2.0	1.9	2.0	n/a
<b>Route 11</b>	20/10/2014	Windy	2.0	1.9	2.0	n/a
<b>Route 12</b>	20/10/2014	Rain	1.8	1.8	1.8	n/a
<b>Route 13</b>	20/10/2014	Clear	1.8	1.8	1.9	n/a
<b>Route 14</b>	20/10/2014	Clear	1.8	1.8	1.8	n/a
<b>Route 15</b>	20/10/2014	Clear	1.8	1.8	1.9	n/a
<b>Route 16</b>	20/10/2014	Clear	1.8	1.8	1.9	n/a
<b>Route 17</b>	20/10/2014	Clear	1.9	1.9	1.9	n/a
<b>Route 18</b>	20/10/2014	Clear	1.8	1.8	1.9	n/a

**Table B- 12: CH<sub>4</sub> concentration for Run 12 (20/10/2014 – Afternoon)**

Site number	Date	Weather conditions	Average CH <sub>4</sub> (ppm)	Minimum CH <sub>4</sub> (ppm)	Maximum CH <sub>4</sub> (ppm)	Average δ <sup>13</sup> C-CH <sub>4</sub> (‰)
Route 1	20/10/2014	Overcast / patchy rain	1.8	1.8	1.8	n/a
Route 2	20/10/2014	Overcast / patchy rain	1.8	1.8	1.8	n/a
Route 3	20/10/2014	Overcast / patchy rain	1.8	1.8	1.8	n/a
Route 4	20/10/2014	Overcast / patchy rain	1.8	1.8	1.8	n/a
Route 5	20/10/2014	Overcast / patchy rain	1.8	1.8	1.8	n/a
Route 6	20/10/2014	Overcast / patchy rain	1.8	1.8	1.8	n/a
Route 7	20/10/2014	Overcast / patchy rain	1.8	1.8	1.8	n/a
Route 8	20/10/2014	Overcast / patchy rain	1.8	1.8	1.8	n/a
Route 9	20/10/2014	Overcast / patchy rain	1.8	1.8	1.8	n/a
Route 10	20/10/2014	Overcast / patchy rain	1.8	1.8	1.8	n/a
Route 11	20/10/2014	Overcast / patchy rain	1.8	1.8	1.8	n/a
Route 12	20/10/2014	Overcast / patchy rain	1.8	1.8	1.8	n/a
Route 13	20/10/2014	Overcast / patchy rain	1.8	1.8	1.8	n/a
Route 14	20/10/2014	Overcast / patchy rain	1.8	1.8	1.8	n/a
Route 15	20/10/2014	Overcast / patchy rain	1.8	1.8	1.8	n/a
Route 16	20/10/2014	Overcast / patchy rain	1.8	1.8	1.8	n/a
Route 17	20/10/2014	Overcast / patchy rain	1.8	1.8	1.8	n/a
Route 18	20/10/2014	Overcast / patchy rain	1.8	1.8	1.8	n/a

---

**Appendix C TIME SERIES OF THE METHANE CONCENTRATION DATA MEASURED AT THE  
STATIONARY MONITORING SITE**

---

