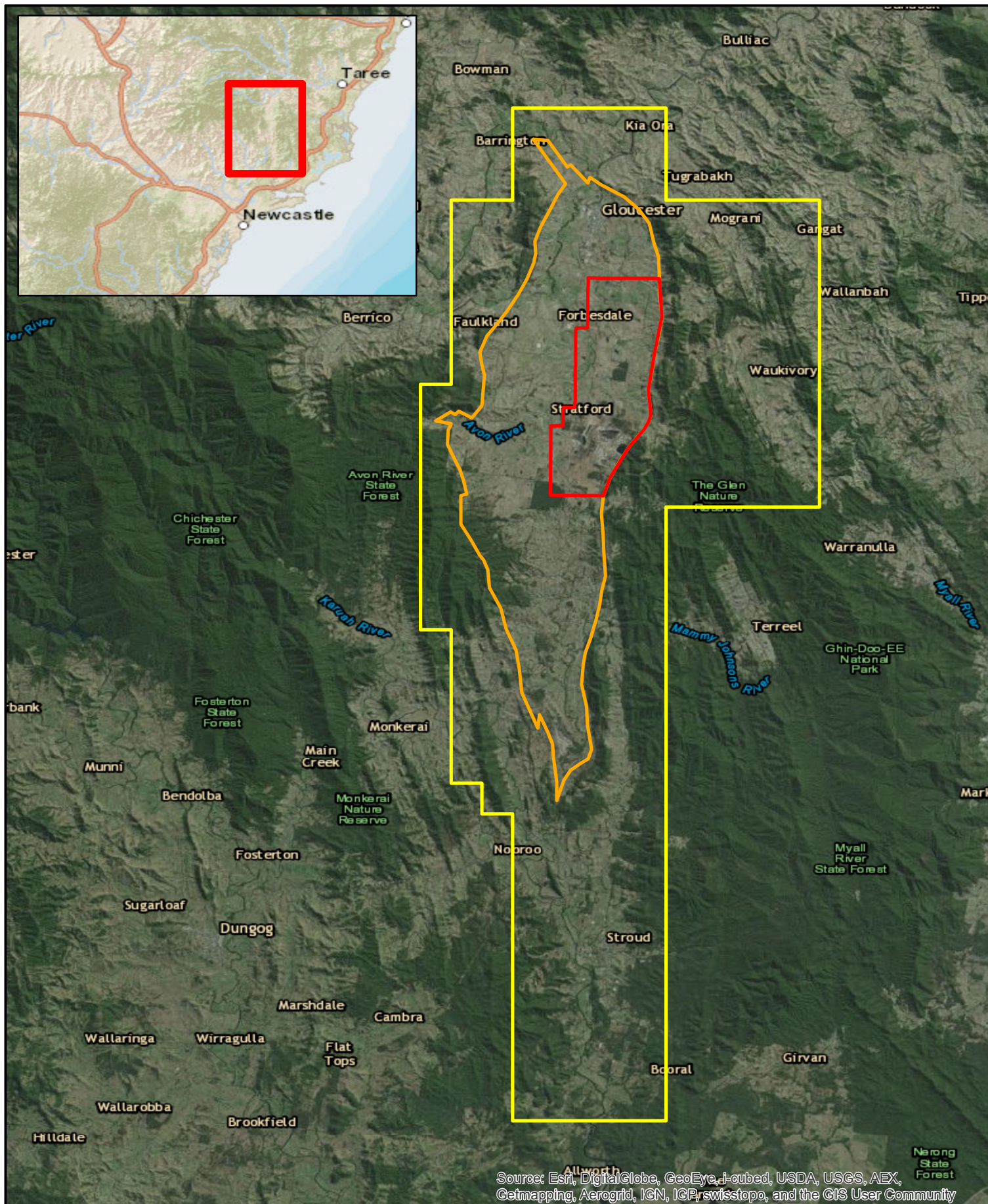


Gloucester Gas Project – Regional Location of Project site



Source: Esri, DigitalGlobe, GeoEye, i-cubed, USDA, USGS, AEX, Getmapping, Aerogrid, IGN, IGP, swisstopo, and the GIS User Community

Energy in action™



Author: Upstream Gas

Date: 14-08-2014

Ref: 1852R3

Kilometres
0 5 10

Scale 1:300,000 @A4

Geocentric Datum of Australia 1994

Legend

- Stage 1 GFDA Boundary
- Basin Outline
- PEL 285



Disclaimer: While AGL has taken great care and attention to ensure the accuracy of the data represented on this map, no liability shall be accepted for any errors or omissions. No part of this map may be reproduced without prior permission of AGL.

Sources: AGL Energy Limited, Omnilink PSMA Data, ESRI Imagery