

Gloucester
Our local
matters



Supplying natural gas to NSW.

AGL Gloucester Gas Project
December 2013

The Gloucester Gas Project is located about 100 kilometres north of Newcastle. The project has State and Commonwealth Government approvals.

The project approval includes:

- > Stage 1 gas field development area of up to 110 gas wells and associated infrastructure.
- > A central processing facility to treat gas and water.
- > A 15 megawatt gas-fired electricity generating facility.
- > A gas transmission pipeline to transport gas between the central processing facility and the existing Sydney – Newcastle trunk pipeline.

Gas from the project will be for domestic supply within NSW from late 2016 and has the potential to supply more than 15 per cent of the state's gas needs by 2018.

The Gloucester Gas Project is currently in the Front-End Engineering and Design (FEED) phase. It is expected that construction of the gas field will commence in late 2014.

About us.

Formed in 1837, AGL is one of Australia's leading integrated renewable energy companies, selling gas, electricity and energy-related services to more than 3.5 million customers across NSW, SA, VIC and QLD.

Realigning the pipeline.



AGL has identified four minor realignments to the pipeline route which will deliver improved environmental outcomes.

The main change is the proposed connection to AGL's Newcastle Gas Storage Facility (NGSF) at Tomago (currently being constructed), rather than to the Hexham Delivery Station.

The pipeline realignment will result in improved environmental outcomes by:

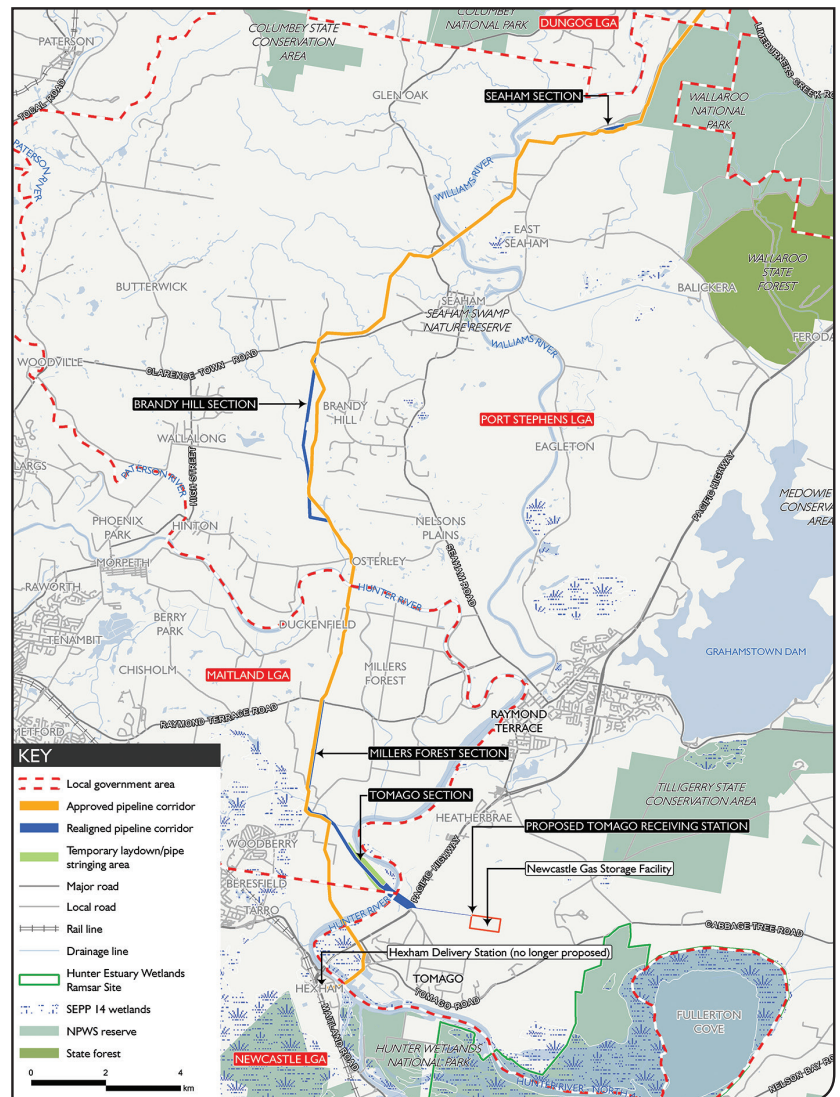
- > eliminating a crossing of the Hunter River
- > reducing the amount of vegetation clearing required
- > shortening the overall length of the pipeline.

AGL is applying to realign the pipeline in the following sections:

- > **Seaham** – 0.65 km section of pipeline corridor at East Seaham, proposed to be straightened and realigned up to 100 m north, mostly within a cleared electricity transmission line easement. This reduces the amount of vegetation clearing from the currently approved alignment.
- > **Brandy Hill** – 5 km section of pipeline corridor near Brandy Hill, proposed to be straightened and realigned generally up to 335 m west to be adjacent to the property boundary.
- > **Millers Forest** – 2.5 km section of pipeline corridor at Millers Forest, proposed to be realigned around 50 m east, to avoid the recently constructed TransGrid electricity transmission line.
- > **Tomago** – 6.5 km section at the southern end of the pipeline corridor, proposed to be realigned to connect with the NGSF at Tomago (rather than the Hexham Delivery Station). This avoids a wetland area protected under State Environmental Planning Policy No. 14 – Coastal Wetlands (SEPP 14), reduces disturbance to acid sulfate soils and only involves one crossing of the Hunter River (rather than two).

AGL has submitted a pipeline application to modify the State approval under the *Environmental Planning and Assessment Act 1979* to the Department of Planning and Infrastructure for assessment.

For more information visit our website www.agl.com.au/gloucester or call the project information line on 1300 886 170.



Join AGL's online community
www.yoursayagl.com.au

Phone: 1300 799 716 or 02 6558 2692
Address: 22 Tate St, Gloucester NSW
Email: gloucester@agl.com.au Web:
www.agl.com.au/gloucester

Energy in
action.

