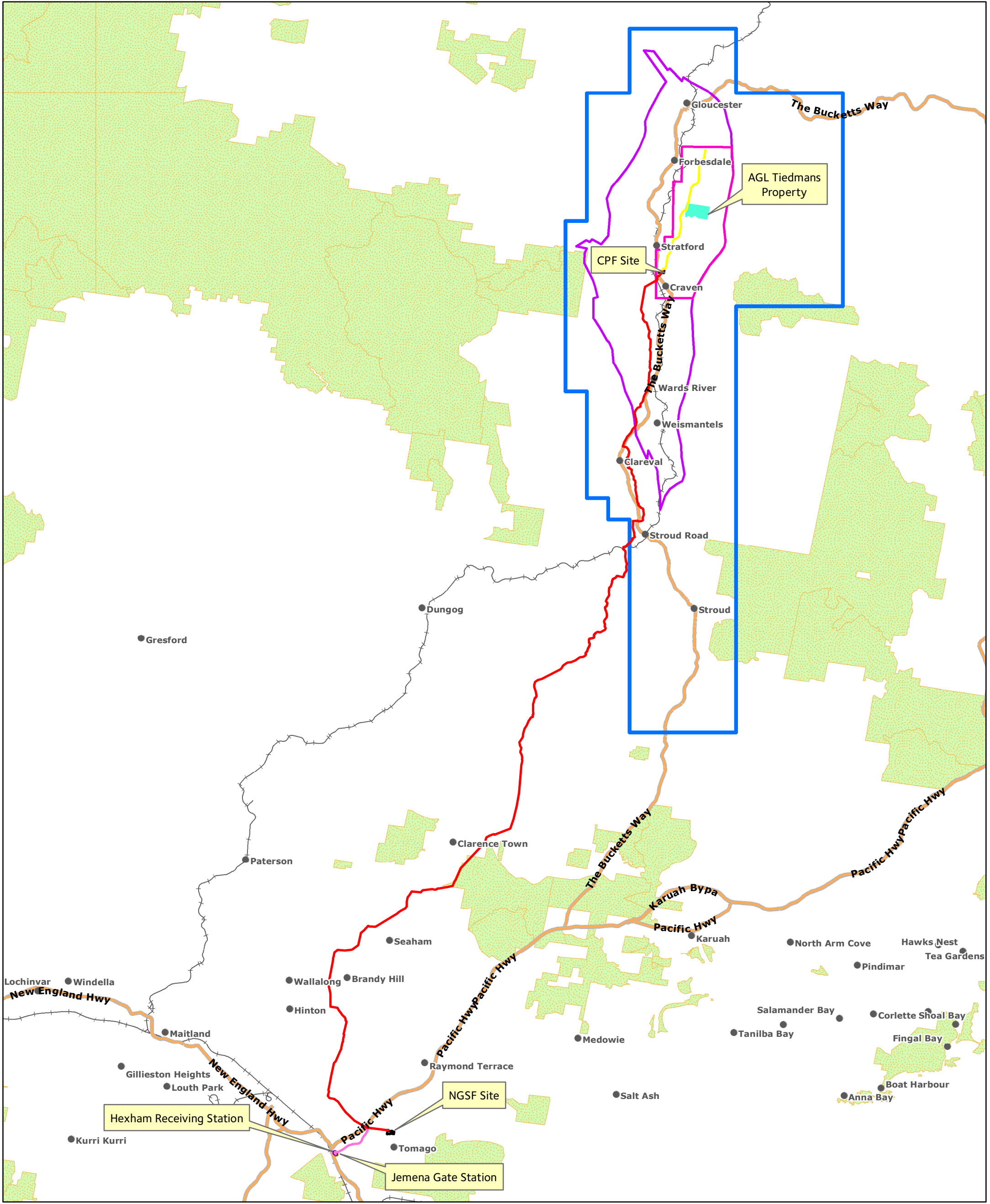


Gloucester Gas Project – Gas Field Development Area and Proposed Infrastructure



Energy in action.



Author: Upstream Gas
 Date: 08/11/2013
 Ref: 2760R10

Kilometres
 0 5 10
 Scale 1:300,000@A3

Geocentric Datum of Australia 1994

Legend

- Stratford to Tomago High Pressure Pipeline
- Gas Gathering Spine
- Tomago to Hexham High Pressure Pipeline
- Plant boundary
- Hexham Receiving Station
- Jemena Gate Station
- AGL Tiedmans Property
- CPF site (Rombo)
- Stage 1 Gas Field Development Area
- Concept Plan Area
- PEL 285
- Towns
- Highways
- +— Railways
- Reserve Areas

Disclaimer: While AGL has taken great care and attention to ensure the accuracy of the data represented on this map, no liability shall be accepted for any errors or omissions. No part of this map may be reproduced without prior permission of AGL.

Sources: AGL Energy Limited, Omnilink PSMA Data, SKM

