

Legend

- Proposed Pipeline KP's
- Proposed Pipeline Rev E
- Cadastre

- Key:
- AA = *Asperula asthenes*
 - GA = *Galium australe*
 - PE = *Persicaria elatior*
 - CL = *Callistemon linearifolius*
 - GP = *Grevillea parviflora*
 - PQ = *Pomaderris queenslandica*
 - TJ = *Tetratheca juncea*
 - CH = *Cryptostylis hunteriana*
 - CE = *Cyanchum elegans*
 - RS = *Rizanthella salteri*

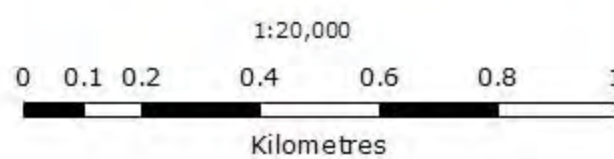
Woodland site above in the GFDA - CL, GP, PQ, TJ

CL, GP, PQ, TJ, CH

AA, GA, PE, CE



Revision DRAFT
Created 24 August 2010
Author Upstream Gas



Map Grid of Australia, Zone 56
Geocentric Datum of Australia 1994

Gloucester Gas Project

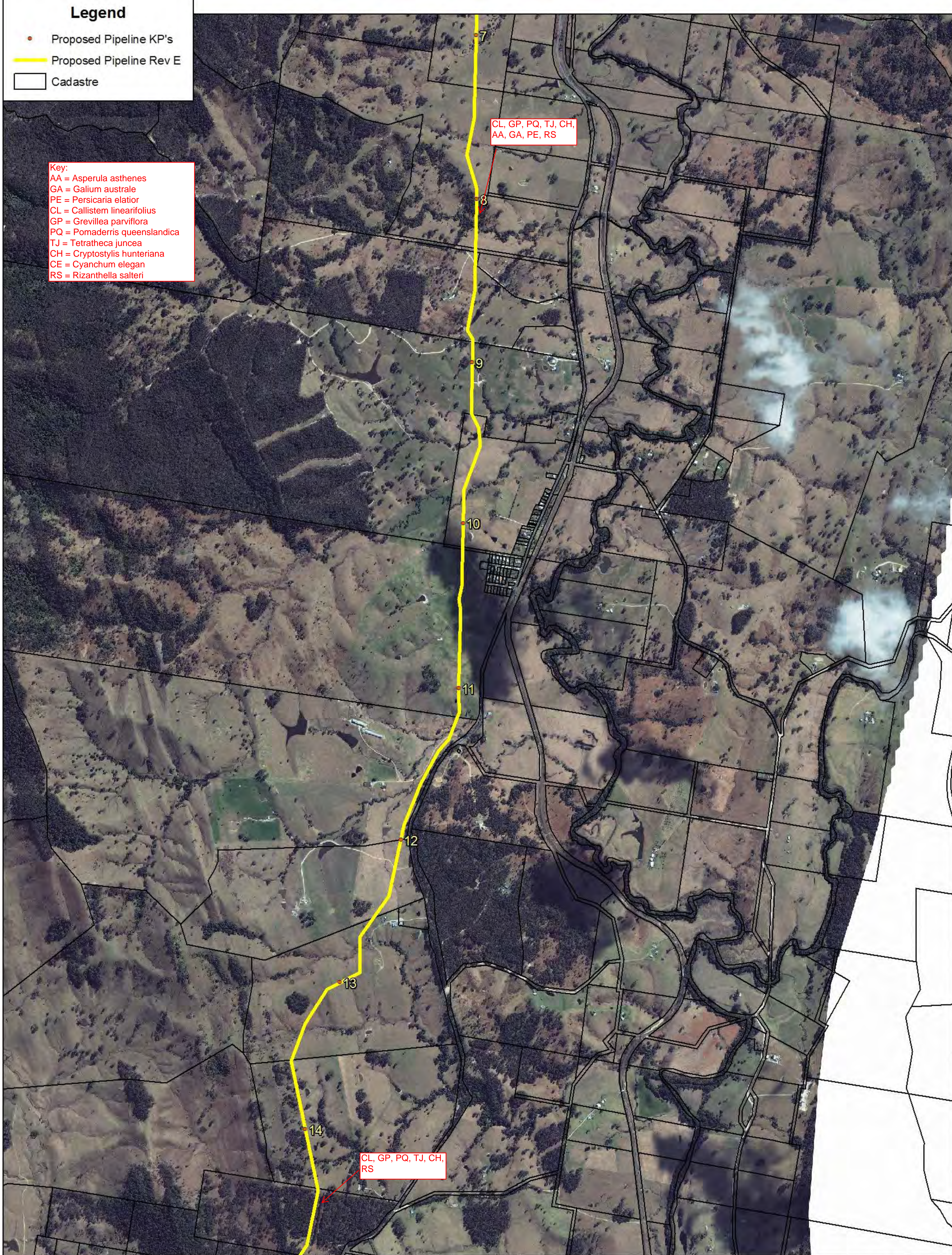
Proposed Pipeline
Map 1 of 12

STRICTLY CONFIDENTIAL

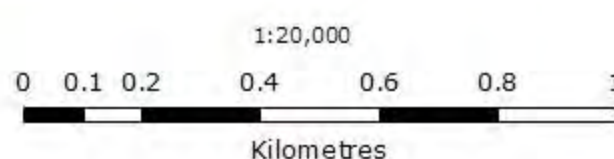
Legend

- Proposed Pipeline KP's
- Proposed Pipeline Rev E
- ▭ Cadastre

- Key:
- AA = *Asperula asthenes*
 - GA = *Galium australe*
 - PE = *Persicaria elatior*
 - CL = *Callistemon linearifolius*
 - GP = *Grevillea parviflora*
 - PQ = *Pomaderris queenslandica*
 - TJ = *Tetratheca juncea*
 - CH = *Cryptostylis hunteriana*
 - CE = *Cyanchum elegans*
 - RS = *Rizanthella salteri*



Revision DRAFT
 Created 24 August 2010
 Author Upstream Gas



1:20,000
 Map Grid of Australia, Zone 56
 Geocentric Datum of Australia 1994

Gloucester Gas Project

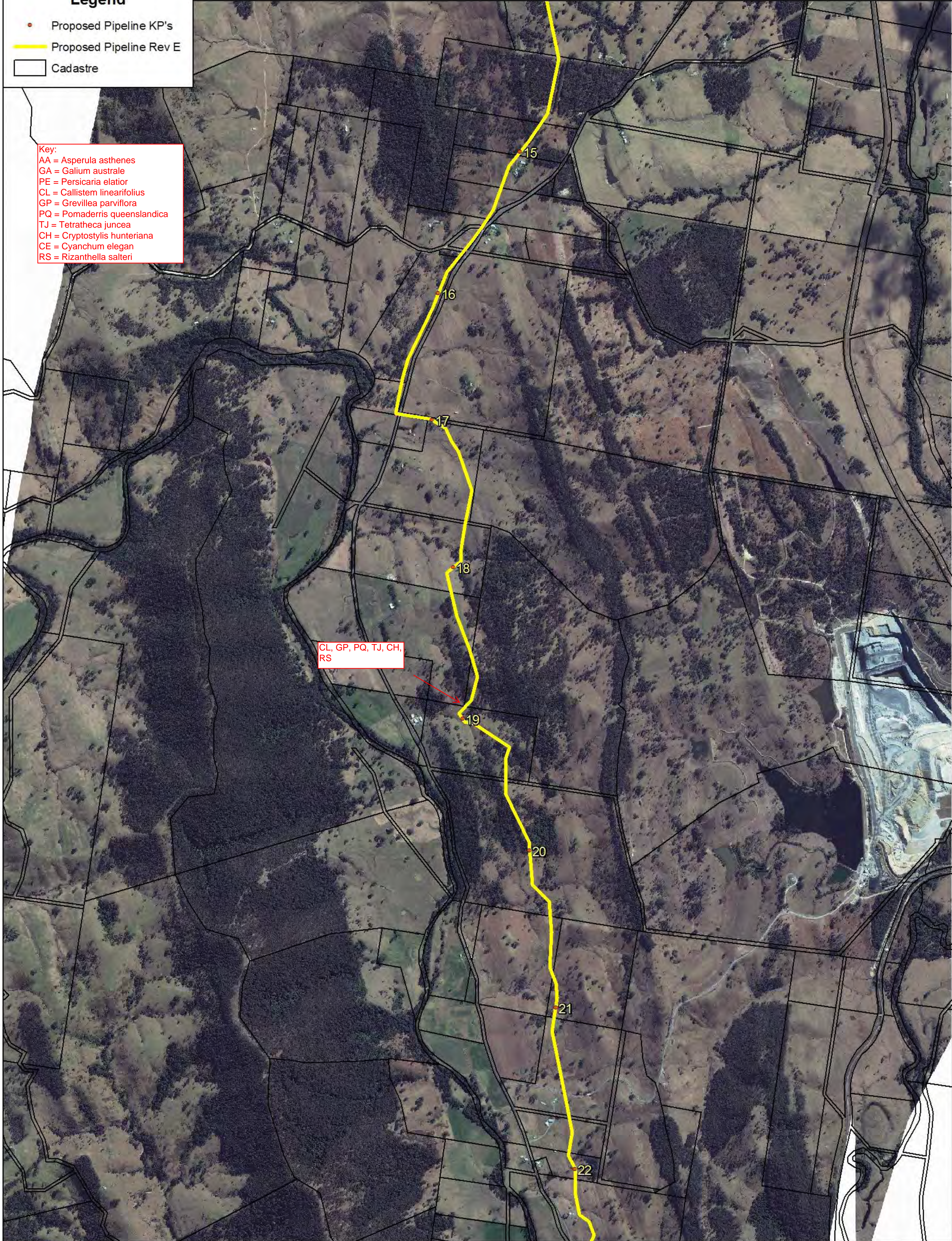
Proposed Pipeline
 Map 2 of 12

STRICTLY CONFIDENTIAL

Legend

- Proposed Pipeline KP's
- Proposed Pipeline Rev E
- Cadastre

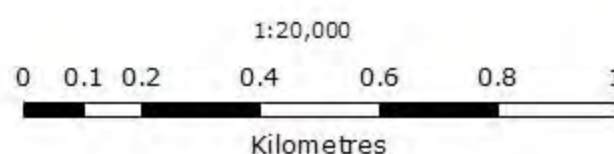
- Key:
- AA = *Asperula asthenes*
 - GA = *Galium australe*
 - PE = *Pericaria elatior*
 - CL = *Callistemon linearifolius*
 - GP = *Grevillea parviflora*
 - PQ = *Pomaderris queenslandica*
 - TJ = *Tetratheca juncea*
 - CH = *Cryptostylis hunteriana*
 - CE = *Cyanchum elegans*
 - RS = *Rizanthella salteri*



CL, GP, PQ, TJ, CH, RS



Revision DRAFT
Created 24 August 2010
Author Upstream Gas



Map Grid of Australia, Zone 56
Geocentric Datum of Australia 1994

Gloucester Gas Project

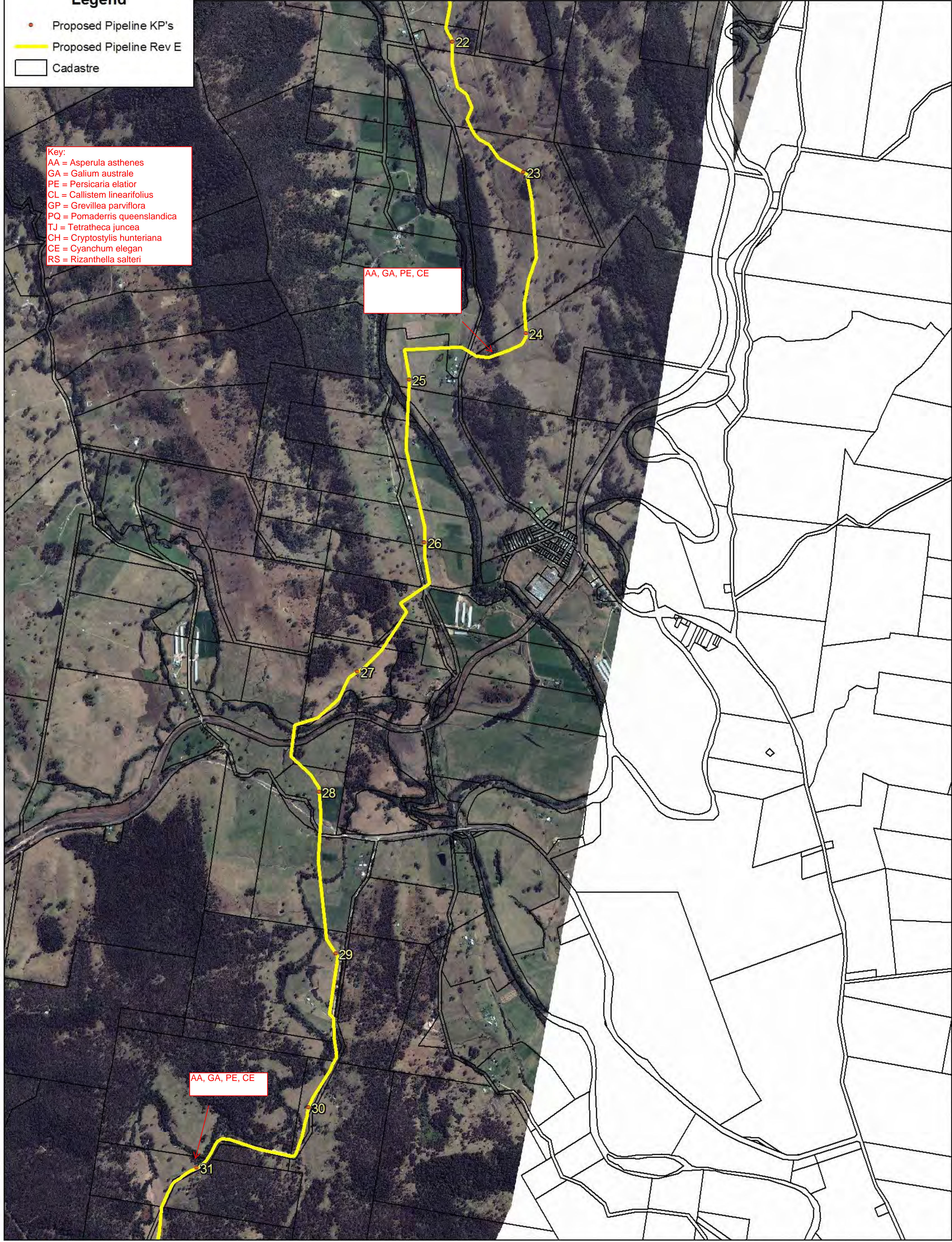
Proposed Pipeline
Map 3 of 12

STRICTLY CONFIDENTIAL

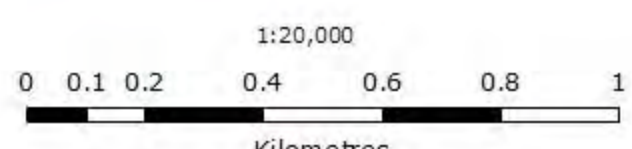
Legend

- Proposed Pipeline KP's
- Proposed Pipeline Rev E
- ▭ Cadastre

- Key:
- AA = *Asperula asthenes*
 - GA = *Galium australe*
 - PE = *Persicaria elatior*
 - CL = *Callistemon linearifolius*
 - GP = *Grevillea parviflora*
 - PQ = *Pomaderris queenlandica*
 - TJ = *Tetratheca juncea*
 - CH = *Cryptostylis hunteriana*
 - CE = *Cyanchum elegans*
 - RS = *Rizanthella salteri*



Revision DRAFT
 Created 24 August 2010
 Author Upstream Gas



1:20,000
 Map Grid of Australia, Zone 56
 Geocentric Datum of Australia 1994

Gloucester Gas Project

Proposed Pipeline
 Map 4 of 12

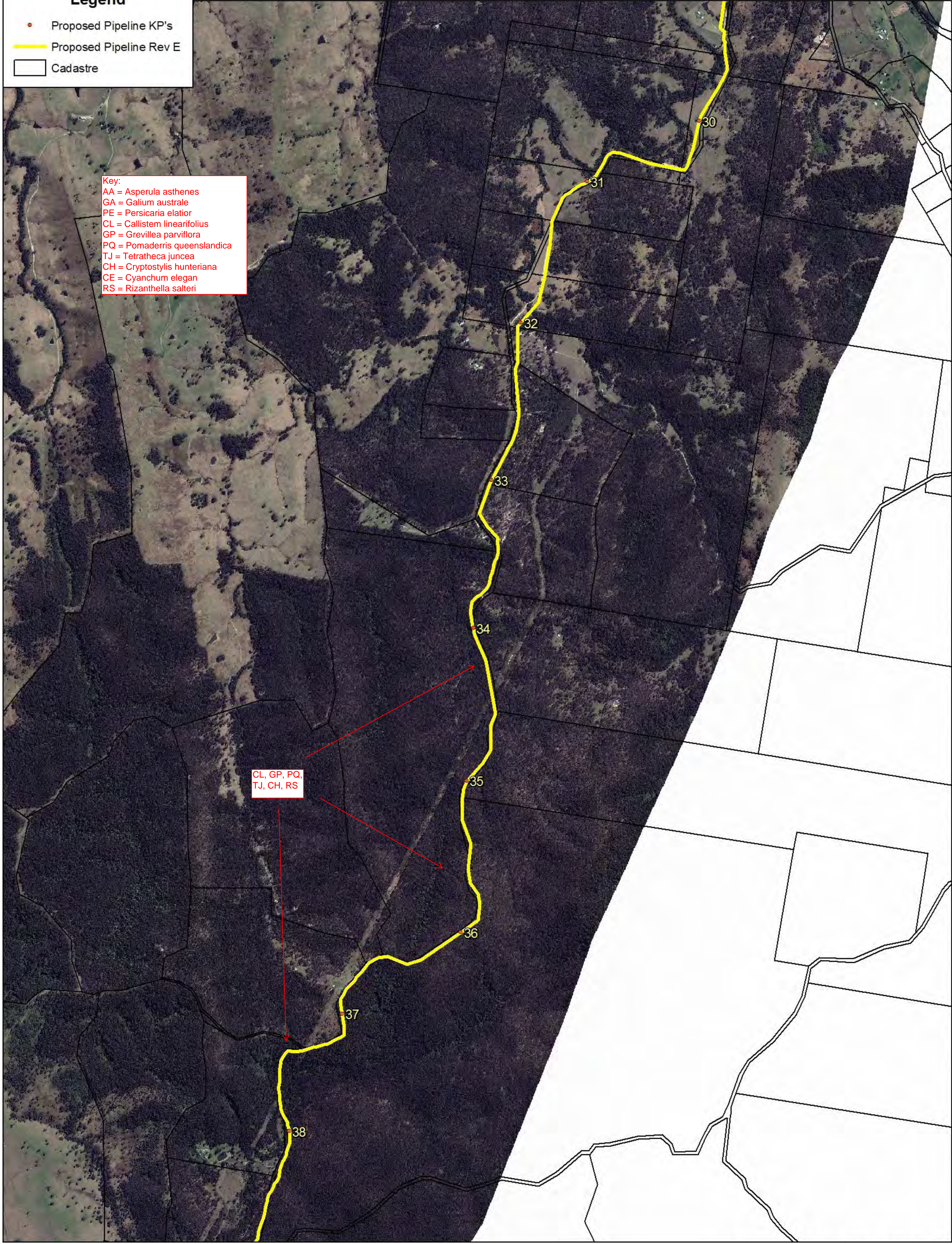
STRICTLY CONFIDENTIAL

© 2010 By using the information provided on this map, you acknowledge and agree that AGL Energy Pty Ltd and the data custodians accept no liability for any loss, damage or costs relating to any use of the data.
 Sources: AGL Energy, NSW Department of Lands, Geoscience Australia

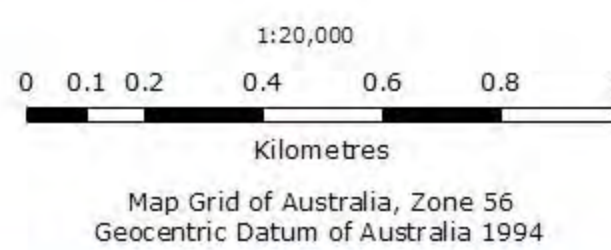
Legend

- Proposed Pipeline KP's
- Proposed Pipeline Rev E
- Cadastre

- Key:
- AA = *Asperula asthenes*
 - GA = *Galium australe*
 - PE = *Persicaria elatior*
 - CL = *Callistemon linearifolius*
 - GP = *Grevillea parviflora*
 - PQ = *Pomaderris queenslandica*
 - TJ = *Tetratheca juncea*
 - CH = *Cryptostylis hunteriana*
 - CE = *Cyanchum elegans*
 - RS = *Rizanthella salteri*



Revision DRAFT
Created 24 August 2010
Author Upstream Gas



Gloucester Gas Project Proposed Pipeline Map 5 of 12

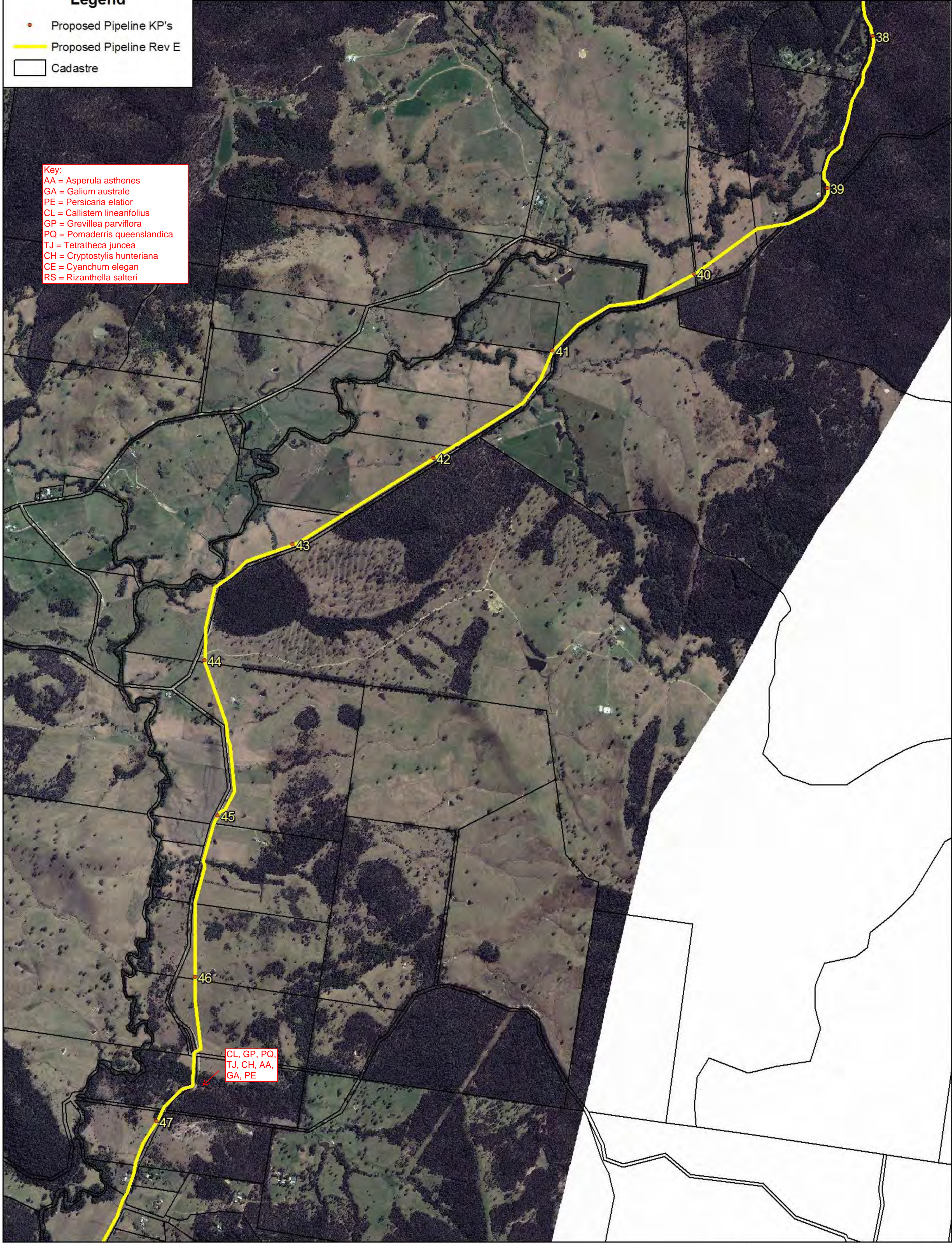
STRICTLY CONFIDENTIAL

Legend

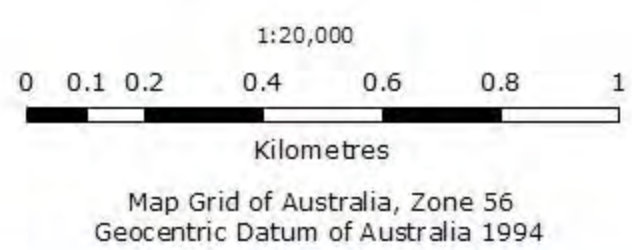
- Proposed Pipeline KP's
- Proposed Pipeline Rev E
- Cadastre

Key:

- AA = *Asperula asthenes*
- GA = *Galium australe*
- PE = *Persicaria elatior*
- CL = *Callistemon linearifolius*
- GP = *Grevillea parviflora*
- PQ = *Pomaderris queenslandica*
- TJ = *Tetradlea juncea*
- CH = *Cryptostylis hunteriana*
- CE = *Cyanchum elegans*
- RS = *Rizanthella salteri*



Revision DRAFT
Created 24 August 2010
Author Upstream Gas

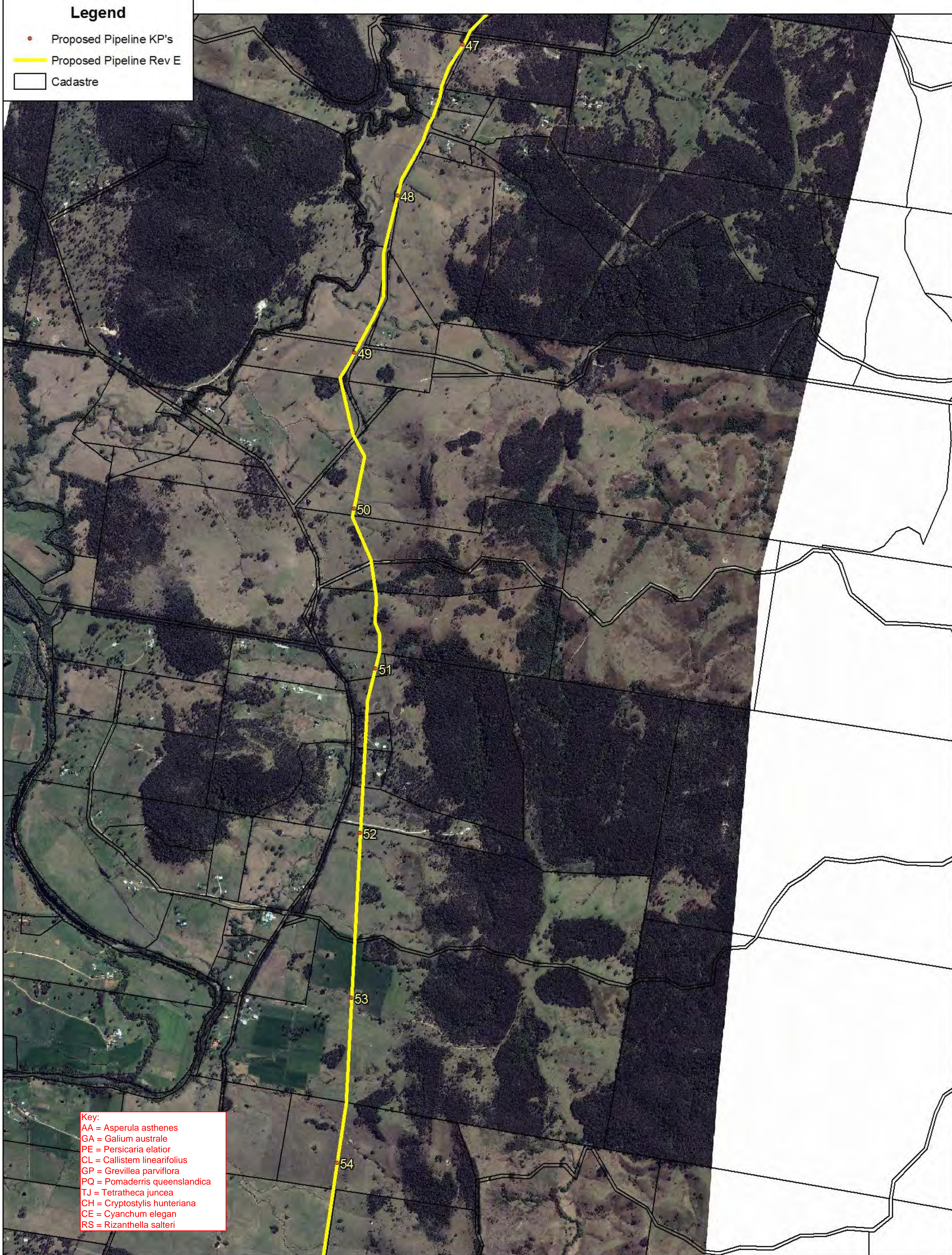


Gloucester Gas Project
Proposed Pipeline
Map 6 of 12
STRICTLY CONFIDENTIAL

© 2010 By using the information provided on this map, you acknowledge and agree that AGL Energy Pty Ltd and the data custodians accept no liability for any loss, damage or costs relating to any use of the data.
Sources: AGL Energy, NSW Department of Lands, Geoscience Australia

Legend

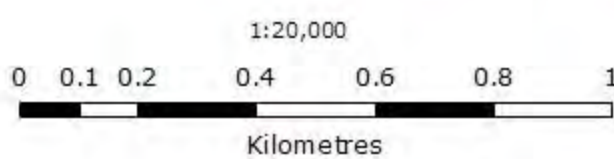
- Proposed Pipeline KP's
- Proposed Pipeline Rev E
- Cadastre



- Key:
- AA = *Asperula asthenes*
 - GA = *Galium australe*
 - PE = *Persicaria elatior*
 - CL = *Callistemon linearifolius*
 - GP = *Grevillea parviflora*
 - PQ = *Pomaderris queenslandica*
 - TJ = *Tetratheca juncea*
 - CH = *Cryptostylis hunteriana*
 - CE = *Cyanchum elegans*
 - RS = *Rizanthella salteri*



Revision DRAFT
Created 24 August 2010
Author Upstream Gas



1:20,000
Map Grid of Australia, Zone 56
Geocentric Datum of Australia 1994

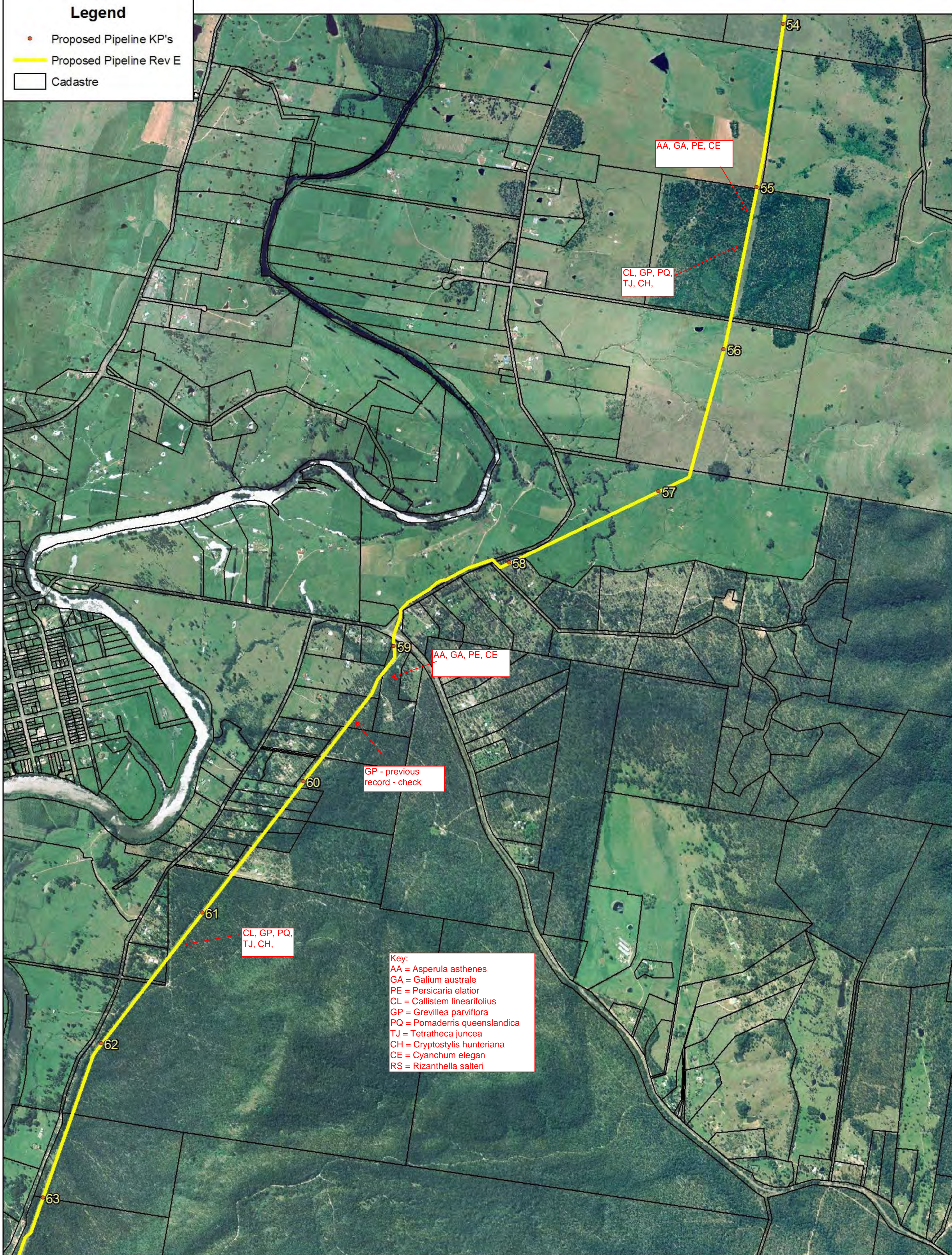
Gloucester Gas Project

Proposed Pipeline
Map 7 of 12

STRICTLY CONFIDENTIAL

Legend

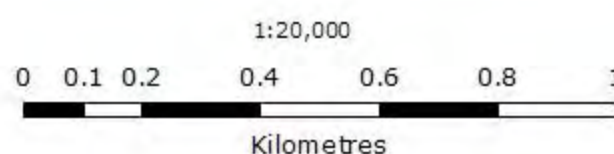
- Proposed Pipeline KP's
- Proposed Pipeline Rev E
- ▭ Cadastre



Key:
 AA = *Asperula asthenes*
 GA = *Galium australe*
 PE = *Persicaria elatior*
 CL = *Callistemon linearifolius*
 GP = *Grevillea parviflora*
 PQ = *Pomaderris queenslandica*
 TJ = *Tetratheca juncea*
 CH = *Cryptostylis hunteriana*
 CE = *Cyanchum elegans*
 RS = *Rizanthella salteri*



Revision DRAFT
 Created 24 August 2010
 Author Upstream Gas



Map Grid of Australia, Zone 56
 Geocentric Datum of Australia 1994

Gloucester Gas Project

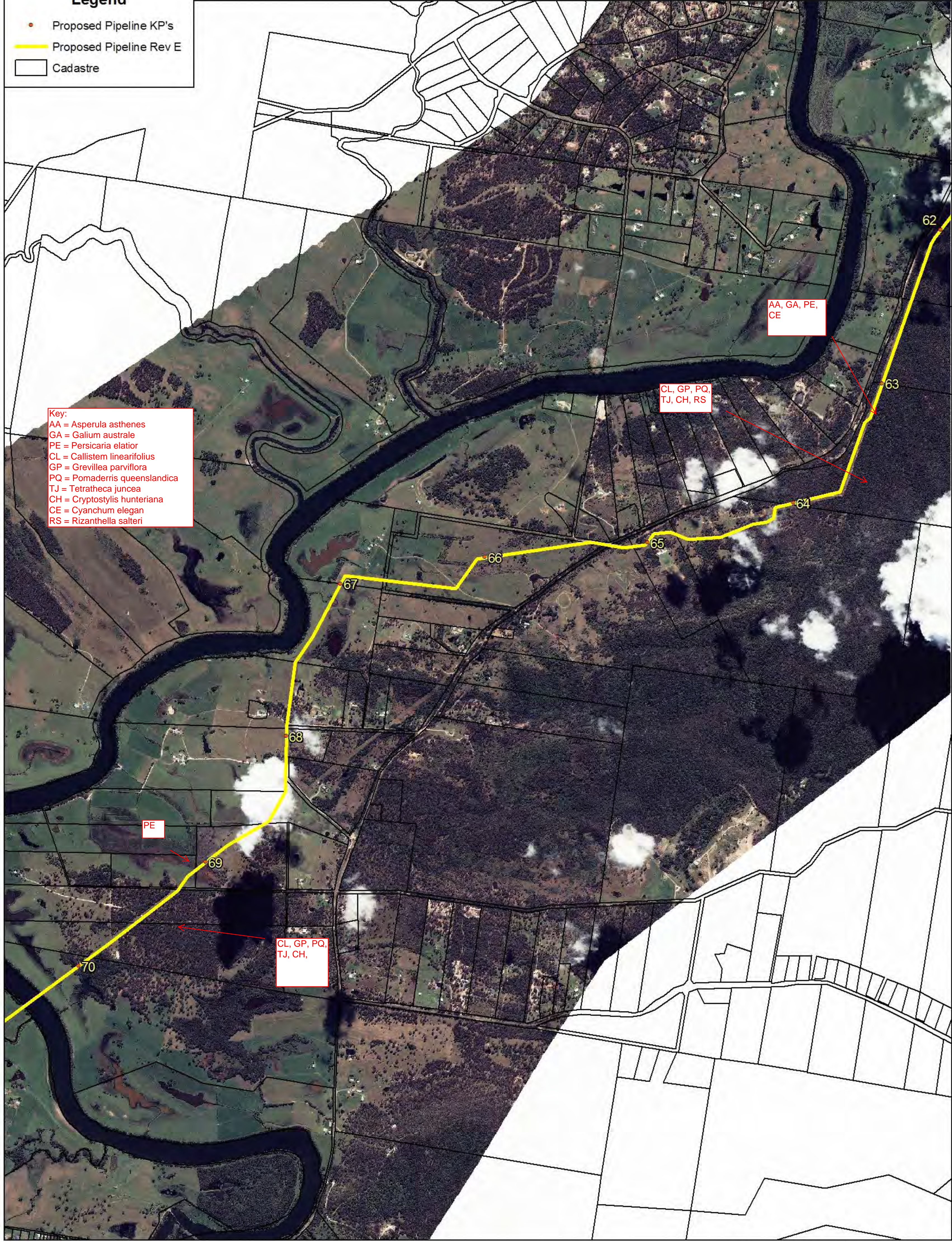
Proposed Pipeline
 Map 8 of 12

STRICTLY CONFIDENTIAL

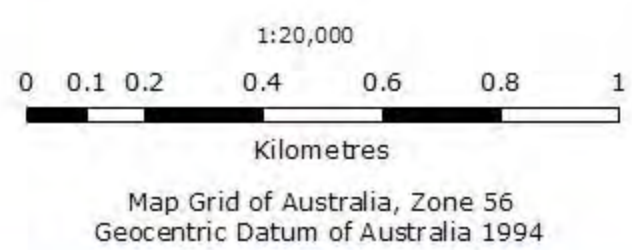
Legend

- Proposed Pipeline KP's
- Proposed Pipeline Rev E
- Cadastre

- Key:
- AA = *Asperula asthenes*
 - GA = *Galium australe*
 - PE = *Persicaria elatior*
 - CL = *Callistemon linearifolius*
 - GP = *Grevillea parviflora*
 - PQ = *Pomaderris queenslandica*
 - TJ = *Tetratheca juncea*
 - CH = *Cryptostylis hunteriana*
 - CE = *Cyanchum elegans*
 - RS = *Rizanthella salteri*



Revision DRAFT
 Created 24 August 2010
 Author Upstream Gas



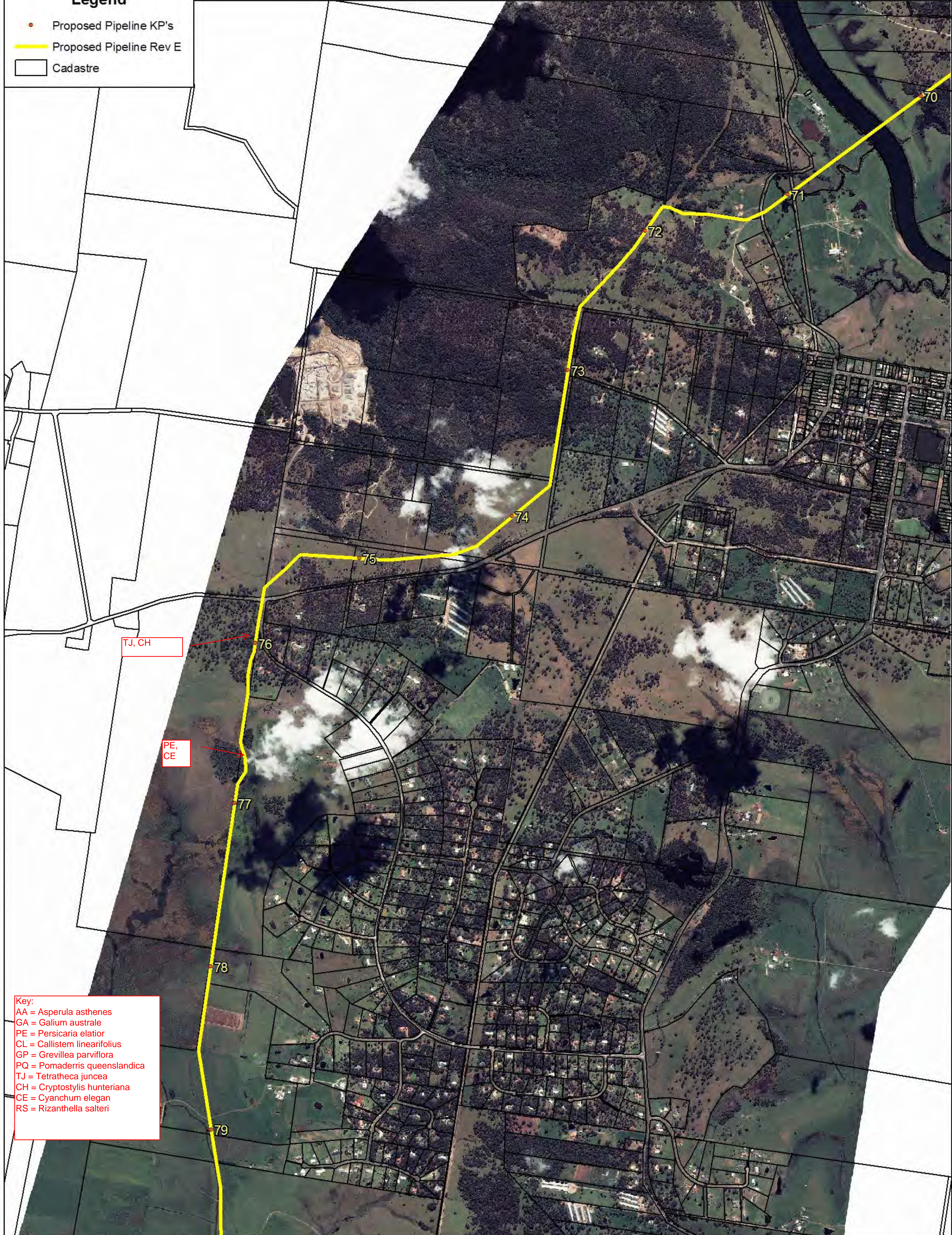
Gloucester Gas Project Proposed Pipeline Map 9 of 12

STRICTLY CONFIDENTIAL

© 2010 By using the information provided on this map, you acknowledge and agree that AGL Energy Pty Ltd and the data custodians accept no liability for any loss, damage or costs relating to any use of the data.
 Sources: AGL Energy, NSW Department of Lands, Geoscience Australia

Legend

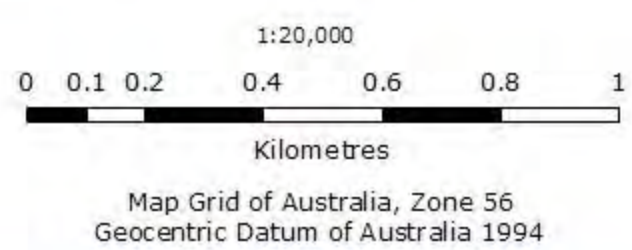
- Proposed Pipeline KP's
- Proposed Pipeline Rev E
- Cadastre



- Key:**
- AA = *Asperula asthenes*
 - GA = *Galium australe*
 - PE = *Persicaria elator*
 - CL = *Callistemon linearifolius*
 - GP = *Grevillea parviflora*
 - PQ = *Pomaderris queenslandica*
 - TJ = *Tetratheca juncea*
 - CH = *Cryptostylis hunteriana*
 - CE = *Cyanchum elegans*
 - RS = *Rizanthella salteri*



Revision DRAFT
 Created 24 August 2010
 Author Upstream Gas

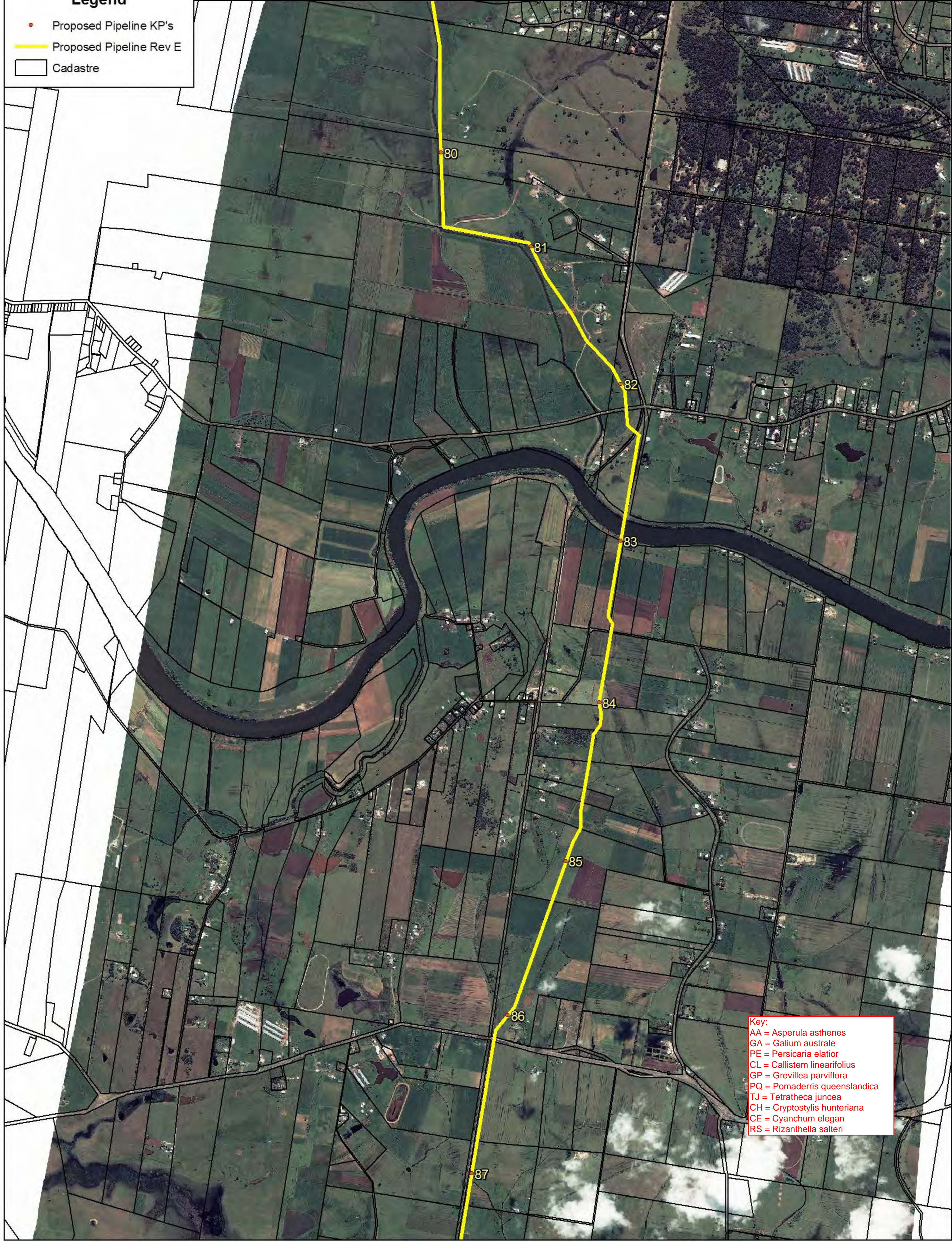


Gloucester Gas Project Proposed Pipeline Map 10 of 12

STRICTLY CONFIDENTIAL

Legend

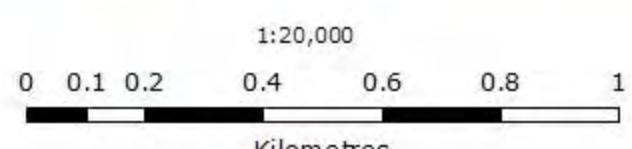
- Proposed Pipeline KP's
- Proposed Pipeline Rev E
- Cadastral



Key:
AA = *Asperula asthenes*
GA = *Galium australe*
PE = *Persicaria elatior*
CL = *Callistemon linearifolius*
GP = *Grevillea parviflora*
PQ = *Pomaderris queenslandica*
TJ = *Tetradlea juncea*
CH = *Cryptostylis hunteriana*
CE = *Cyanchum elegans*
RS = *Rizanthella salteri*



Revision DRAFT
Created 24 August 2010
Author Upstream Gas



Map Grid of Australia, Zone 56
Geocentric Datum of Australia 1994

Gloucester Gas Project

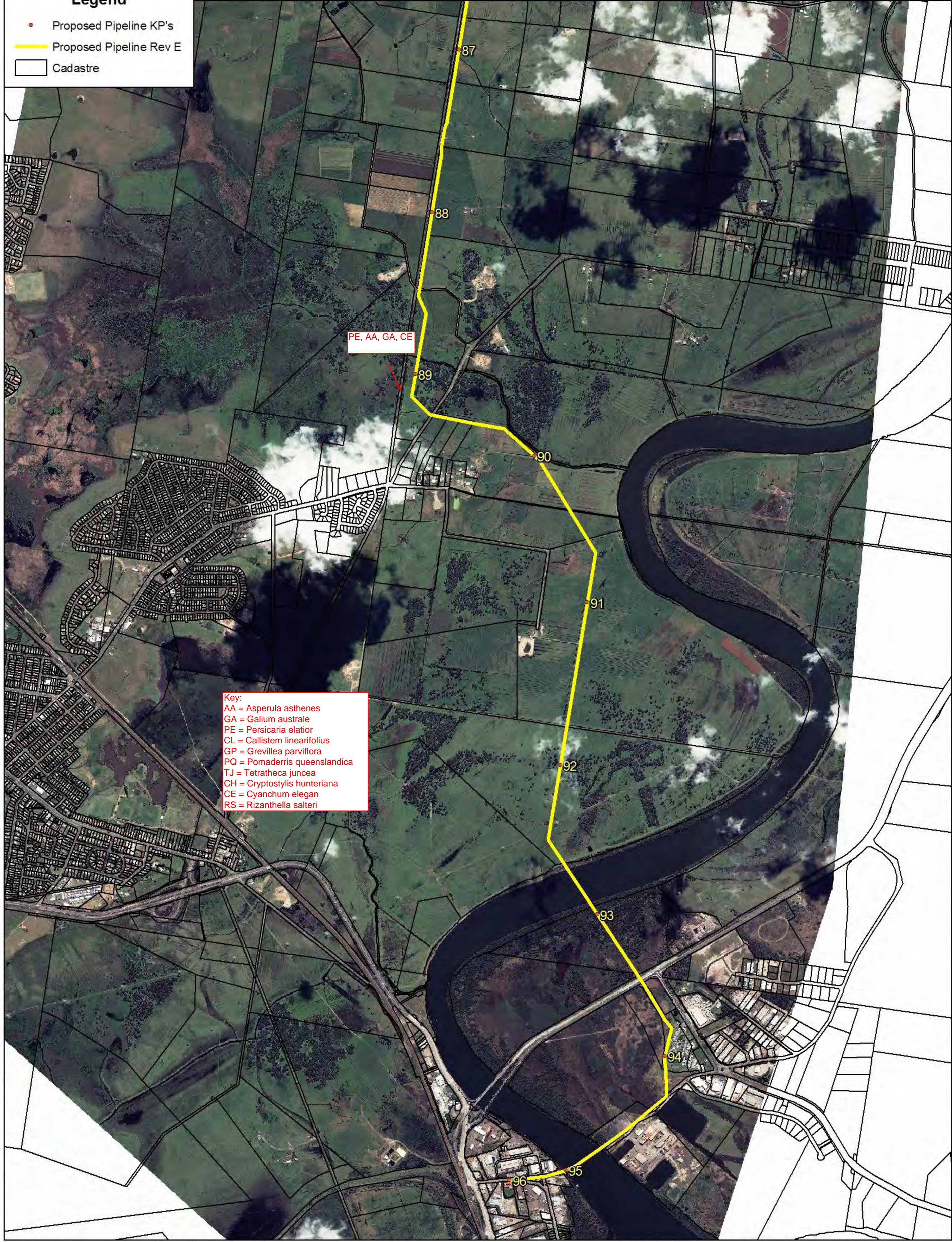
Proposed Pipeline Map 11 of 12

STRICTLY CONFIDENTIAL

© 2010 By using the information provided on this map, you acknowledge and agree that AGL Energy Pty Ltd and the data custodians accept no liability for any loss, damage or costs relating to any use of the data.
Sources: AGL Energy, NSW Department of Lands, Geoscience Australia

Legend

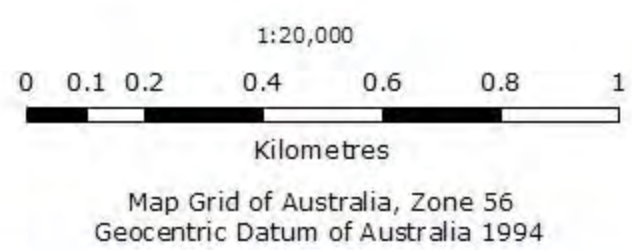
- Proposed Pipeline KP's
- Proposed Pipeline Rev E
- Cadastre



Key:
AA = *Asperula asthenes*
GA = *Galium australe*
PE = *Persicaria elatior*
CL = *Callistemon linearifolius*
GP = *Grevillea parviflora*
PQ = *Pomaderris queenlandica*
TJ = *Tetraetheca juncea*
CH = *Cryptostylis hunteriana*
CE = *Cyanchum elegans*
RS = *Rizanthella salteri*



Revision DRAFT
Created 24 August 2010
Author Upstream Gas



Gloucester Gas Project Proposed Pipeline Map 12 of 12

STRICTLY CONFIDENTIAL

© 2010 By using the information provided on this map, you acknowledge and agree that AGL Energy Pty Ltd and the data custodians accept no liability for any loss, damage or costs relating to any use of the data.
Sources: AGL Energy, NSW Department of Lands, Geoscience Australia