

6.3 Summary of Visual Impact

A total of thirty four potential view locations were identified as part of the visual assessment process.

The following table summarises the assessment of the visual impact for potential view locations surrounding the Project.

Table 5 Summary of Visual Impact

	Visual Impact			
Key Project Structure	Nil	Low	Medium	High
Power Station	16	18	0	0
Communication Tower	15	19	0	0
Valve Station	22	12	0	0

There are unlikely to be any significant and direct views toward the power station and communication tower and valve station from the majority of local roads or access tracks. Views toward the power station are likely to be restricted to portions of the exhaust stacks and will be generally for a short duration where visible.

Photomontages

SECTION 7

7.1 Photomontages

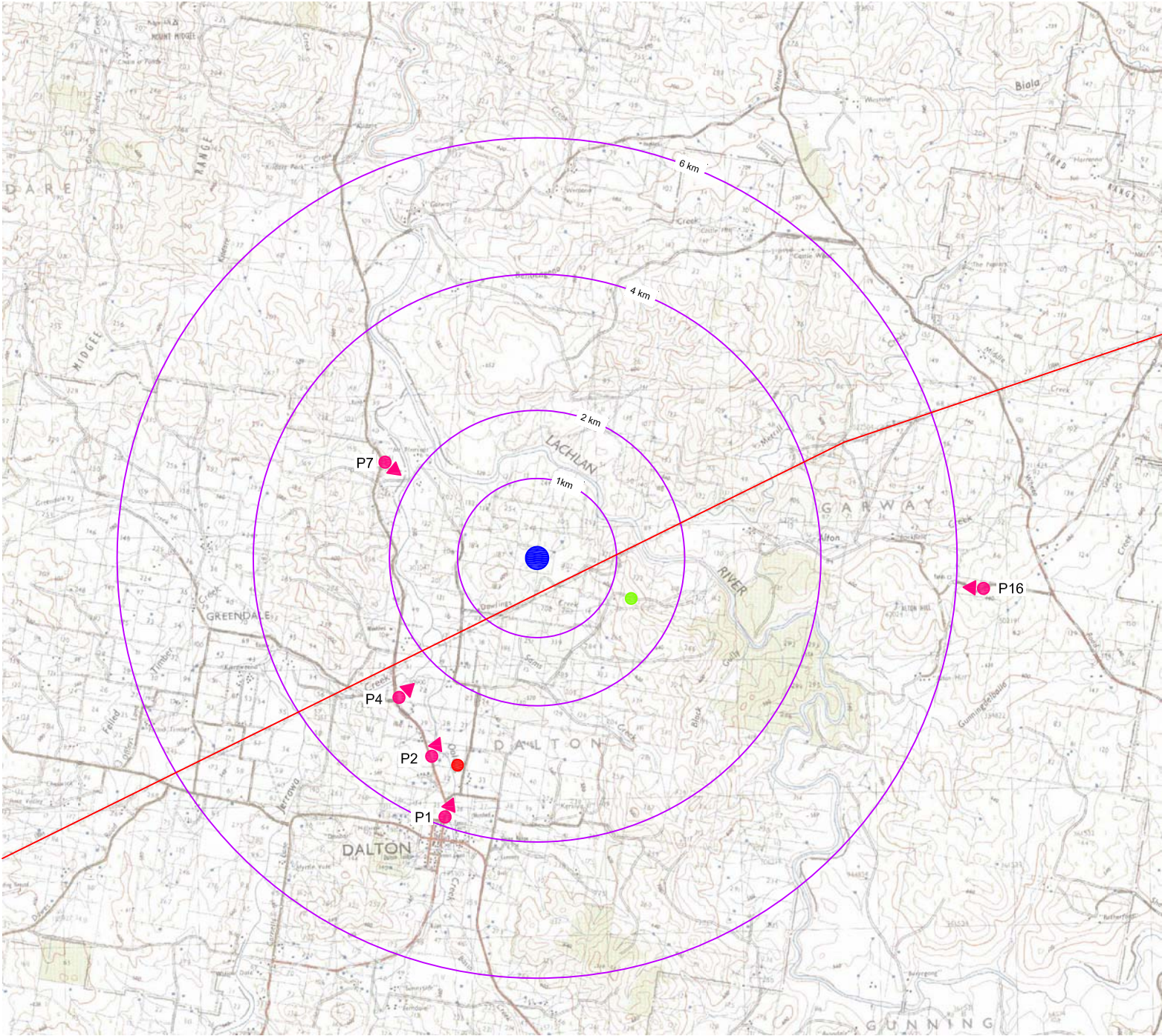
Photomontages have been prepared to illustrate the general appearance of the Project following construction. Four locations were selected to illustrate the proposed power station and communication tower from view locations in surrounding areas.

The photomontage locations were selected from publically accessible sections of surrounding road corridors and represent a range of distances between viewpoint locations and the Project to illustrate the potential influence of distance on visibility. Where possible photomontage locations were selected to provide representative views from single or multiple residential properties located within the vicinity of the photo location.

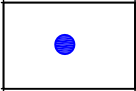
The photo location for each photomontage is illustrated in **Figure 8** and the photomontage presented in **Figures 9 to 13**.


The horizontal and vertical field of view within the photomontage generally exceed the parameters of normal human vision. However, in reality the eyes, head and body can all move and under normal conditions a person would sample a broad area of landscape within a panoramic view. Rather than restricting the extent of each photomontage to a single photographic image, a broader field of view is presented to more fully illustrate the power station and communication tower.

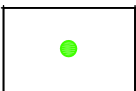
Whilst a photomontage can provide an image that illustrates a very accurate representation of an object in relation to its proposed location and scale relative to the surrounding landscape, this assessment acknowledges that large scale objects in the landscape can appear smaller in photomontage than in real life and is partly due to the fact that a flat image does not allow the viewer to perceive any information relating to depth or distance.

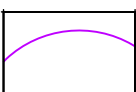


LEGEND

- 

INDICATIVE SITE LOCATION
- 

INDICATIVE VALVE STATION SITE LOCATION
- 

INDICATIVE COMMUNICATION TOWER LOCATION
- 


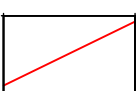
DISTANCE OFFSET
- 

PHOTO LOCATION
- 

EXISTING 330KV TRANSMISSION LINE

Source: Copyright Department of Lands
Panorama Avenue Bathurst 2795
(www.lands.nsw.gov.au)



FINAL	AMENDED REPORT ISSUE	27.06.11
FINAL		23.02.11
DRAFT	FOR REVIEW	26.09.09
ISSUE	REVISION/AMENDMENT	DATE

GREEN BEAN DESIGN
landscape architects

PO BOX 3178,
AUSTRAL, NSW 2170

MOB: 0430 589 995

PROJECT
AGL Dalton
Environmental Assessment

TITLE
PHOTOMONTAGE LOCATIONS

Figure 8

DATE: 26/09/09
DRAWN/CHECKED: AH



Photo Location 1 Existing view north to north east from Chapel Street, Dalton

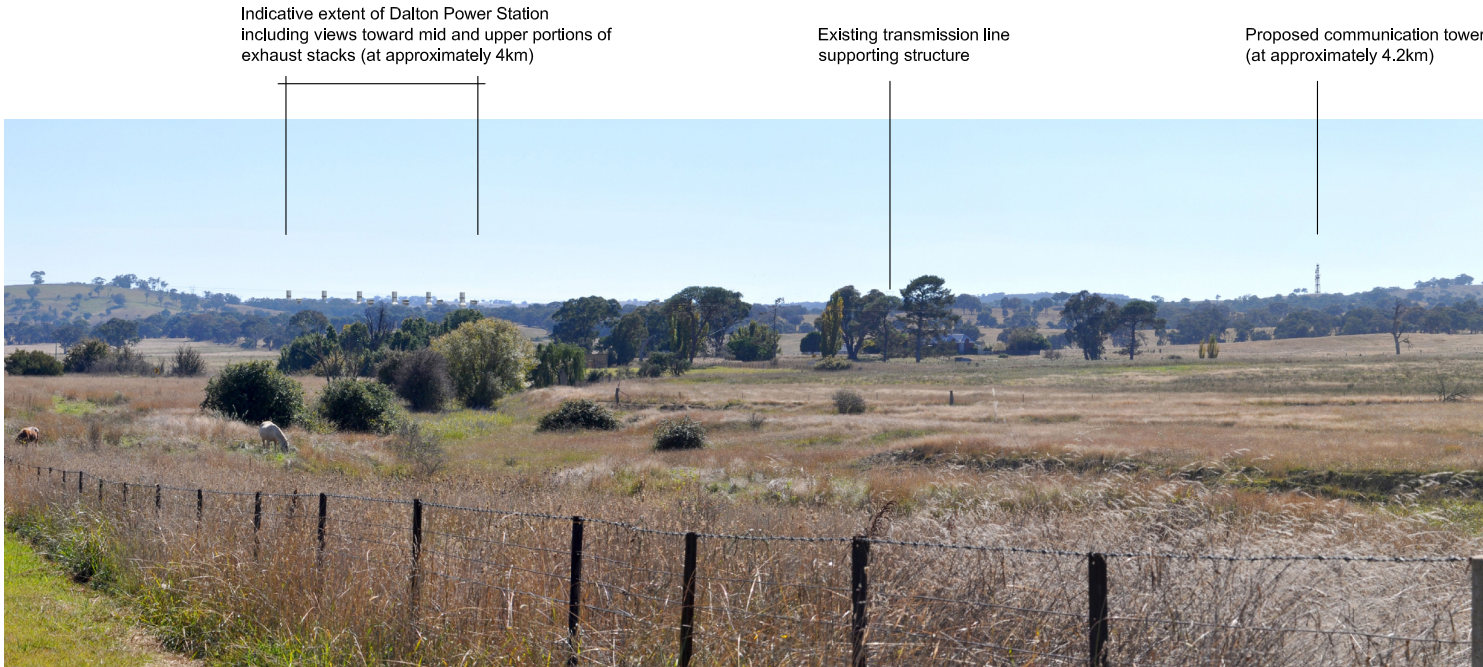


Photo Location 1 Proposed view north to north east from Chapel Street, Dalton

FINAL	AMENDED REPORT ISSUE	27.06.11
FINAL	REPORT ISSUE	09.05.11
ISSUE	REVISION/AMENDMENT	DATE

GREEN BEAN DESIGN
landscape architects

PO BOX 3178,
AUSTRAL, NSW 2179

MOB: 0430 589 995

PROJECT
AGL Dalton
Environmental Assessment

TITLE
PHOTOMONTAGE (Photo Location 1)

Figure 9

DATE: 09/05/11	DRAWN/CHECKED: AH
-------------------	----------------------



Photo Location 2 Existing view north east from Bevendale Street, Dalton

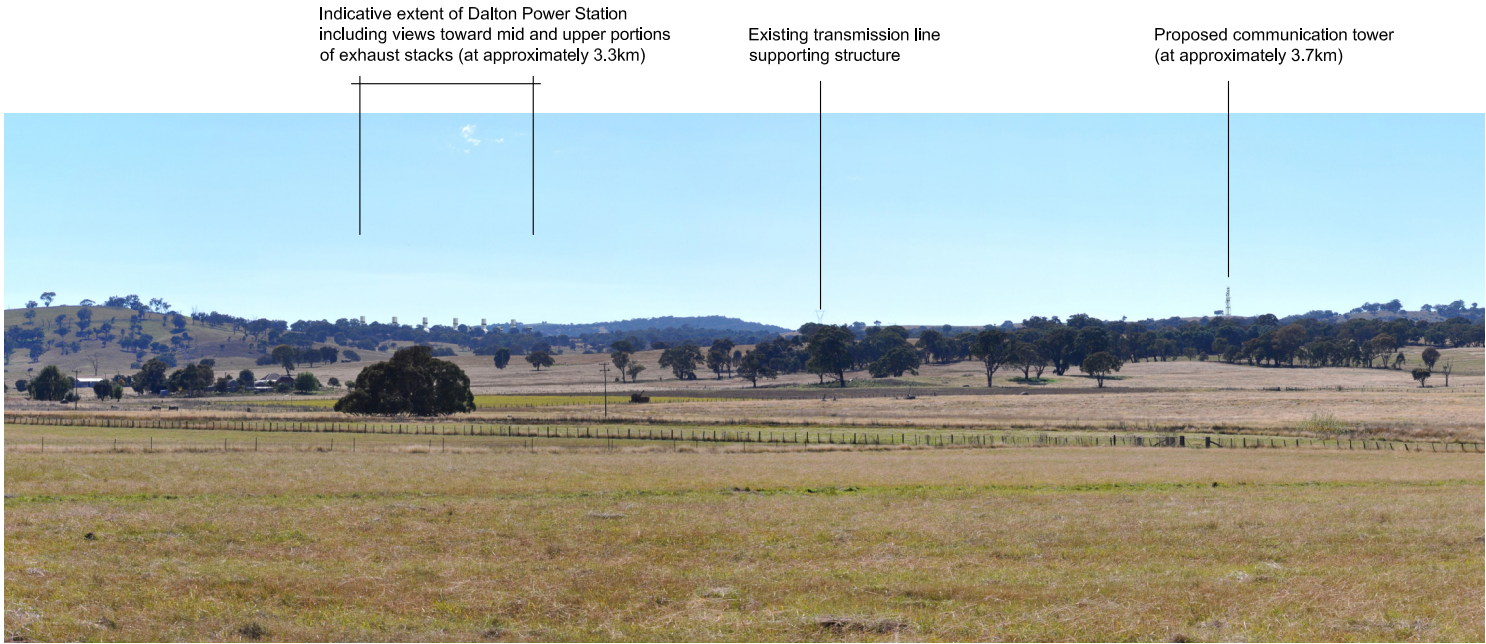


Photo Location 2 Proposed view north east from Bevendale Street, Dalton

FINAL	AMENDED REPORT ISSUE	27.06.11
FINAL	REPORT ISSUE	09.05.11
ISSUE	REVISION/AMENDMENT	DATE

GREEN BEAN DESIGN
landscape architects

PO BOX 3178,
AUSTRAL, NSW 2179

MOB: 0430 589 995

PROJECT
AGL Dalton
Environmental Assessment

TITLE
PHOTOMONTAGE (Photo Location 2)

Figure 10

DATE: 09/05/11	DRAWN/CHECKED: AH
-------------------	----------------------