

Parsons Brinckerhoff Australia Pty Limited

ABN 80 078 004 798

Level 27 Ernst & Young Centre  
680 George Street  
Sydney NSW 2000  
GPO Box 5394  
Sydney NSW 2001  
Australia  
Tel: +61 2 9272 5100  
Fax: +61 2 9272 5101

[www.pbworld.com](http://www.pbworld.com)

Certified to ISO 9001, ISO 14001, OHSAS 18001

## Memo

**Date** 20 March 2015  
**To** Nicola Fry  
**Copy** Andrea Madden  
**From** Carolina Sardella  
**Ref** 2268518A-WAT-MEM-003 RevB  
**Subject** Camden Gas Project - FY15 Q2 monitoring update - January 2015

This memo presents the updated hydrographs for the Denham Court, Menangle Park and Glenlee groundwater monitoring bores to mid-January 2015 and the water quality results for the January 2015 sampling event. Full analysis and discussion of these results, and all the results from the 2014/15 monitoring period, will be presented in the comprehensive 2015 Annual Report.

Specific notes for the FY15 Q2 period are as follows:

- The fluctuating data recorded at GLMB02 appears to be natural. A replacement logger was installed at GLMB02 in October 2014 after which the water level continued to fluctuate in a similar way. Logger failure can be excluded.
- RMB01 was not sampled due to insufficient water in the monitoring bore. RMB04 continues to be dry.

**Figures A.1 – A.6: Individual hydrographs for the Denham Court, Menangle Park and Glenlee sites**

**Figures A.7 – A.8: Nested hydrographs for the Denham Court, Menangle Park and Glenlee sites**

**Table A.1: Water quality results for January 2015**

Yours sincerely



**Carolina Sardella**  
Hydrogeologist

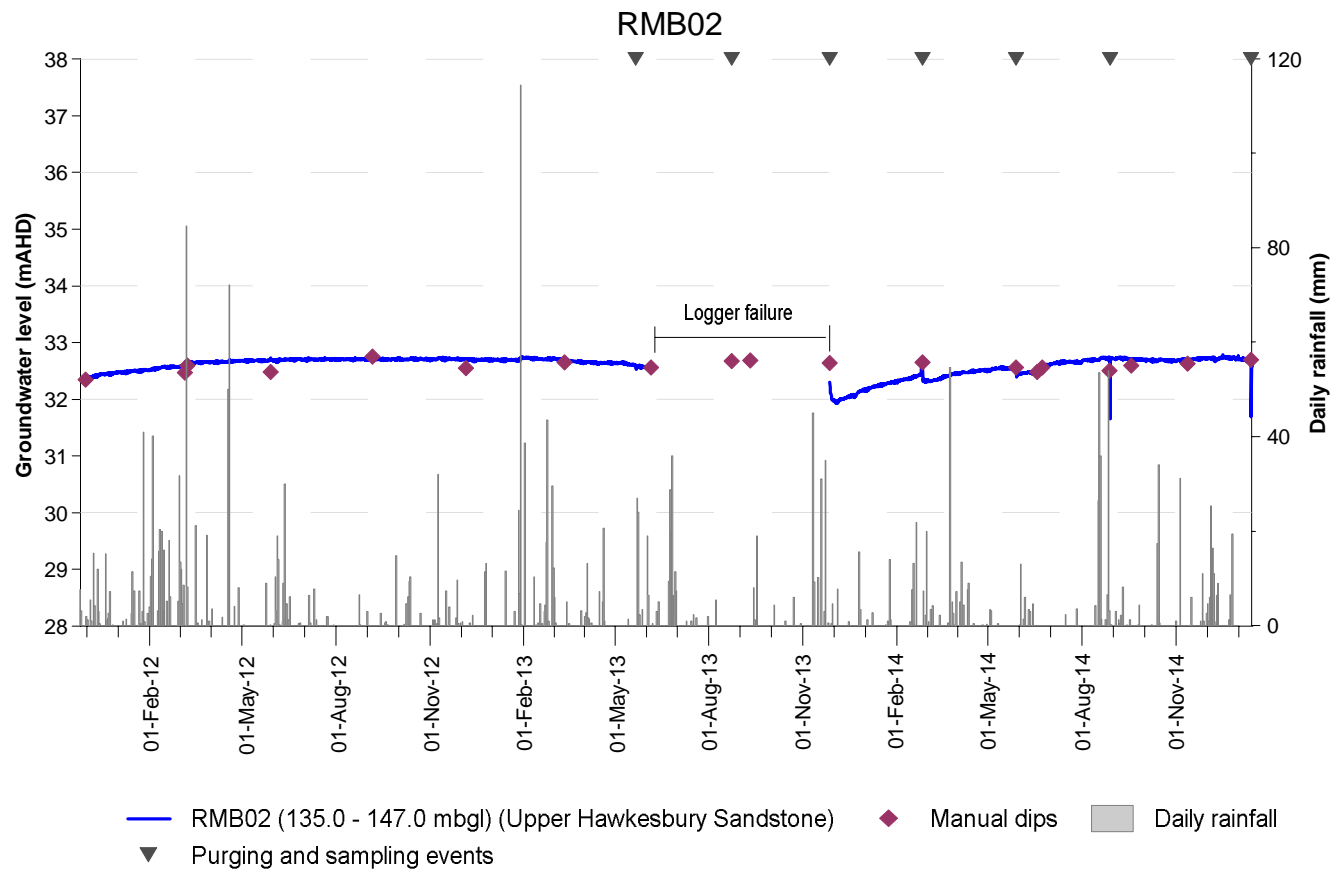
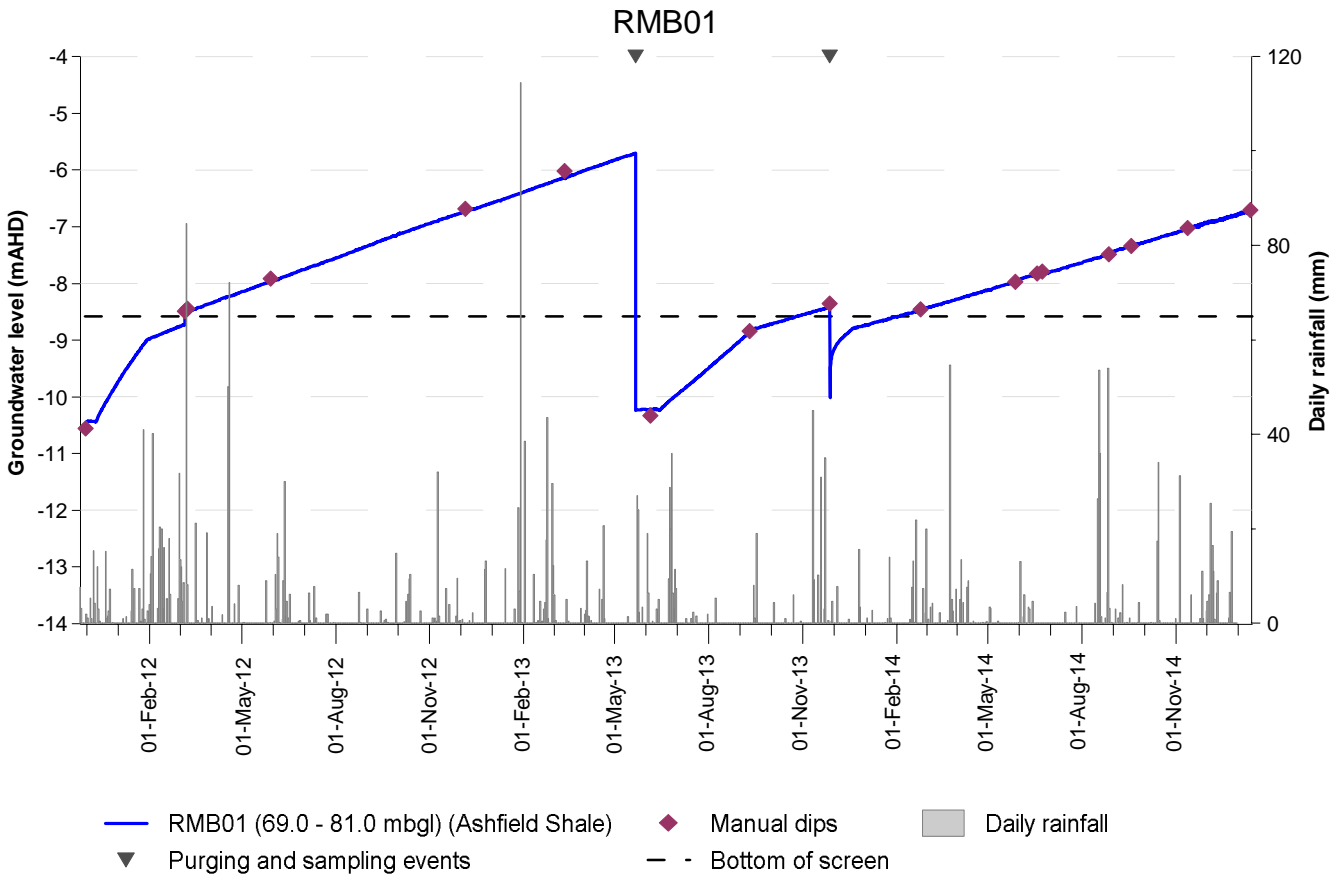


Figure A.1: RMB01 and RMB02 monitoring bores

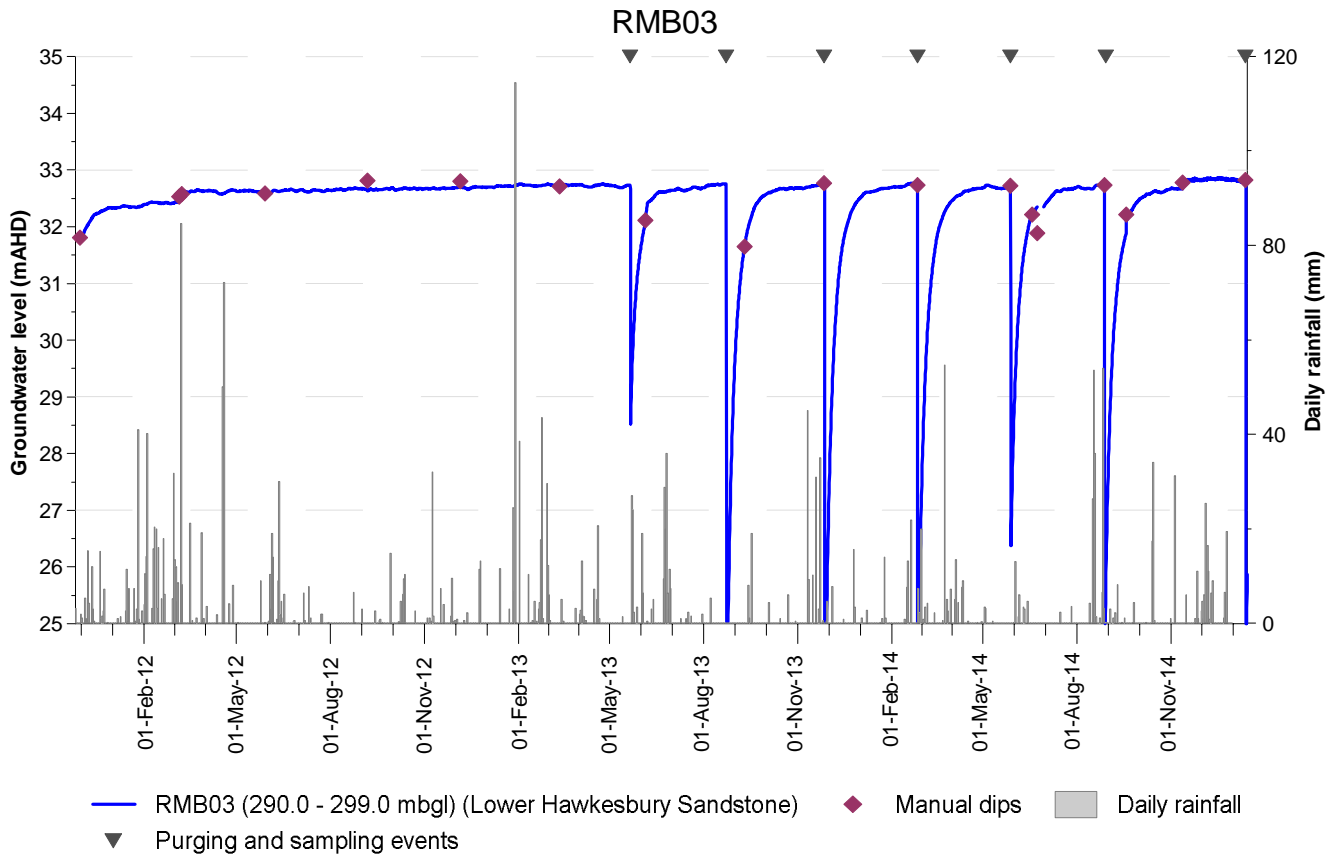


Figure A.2: RMB03 monitoring bore

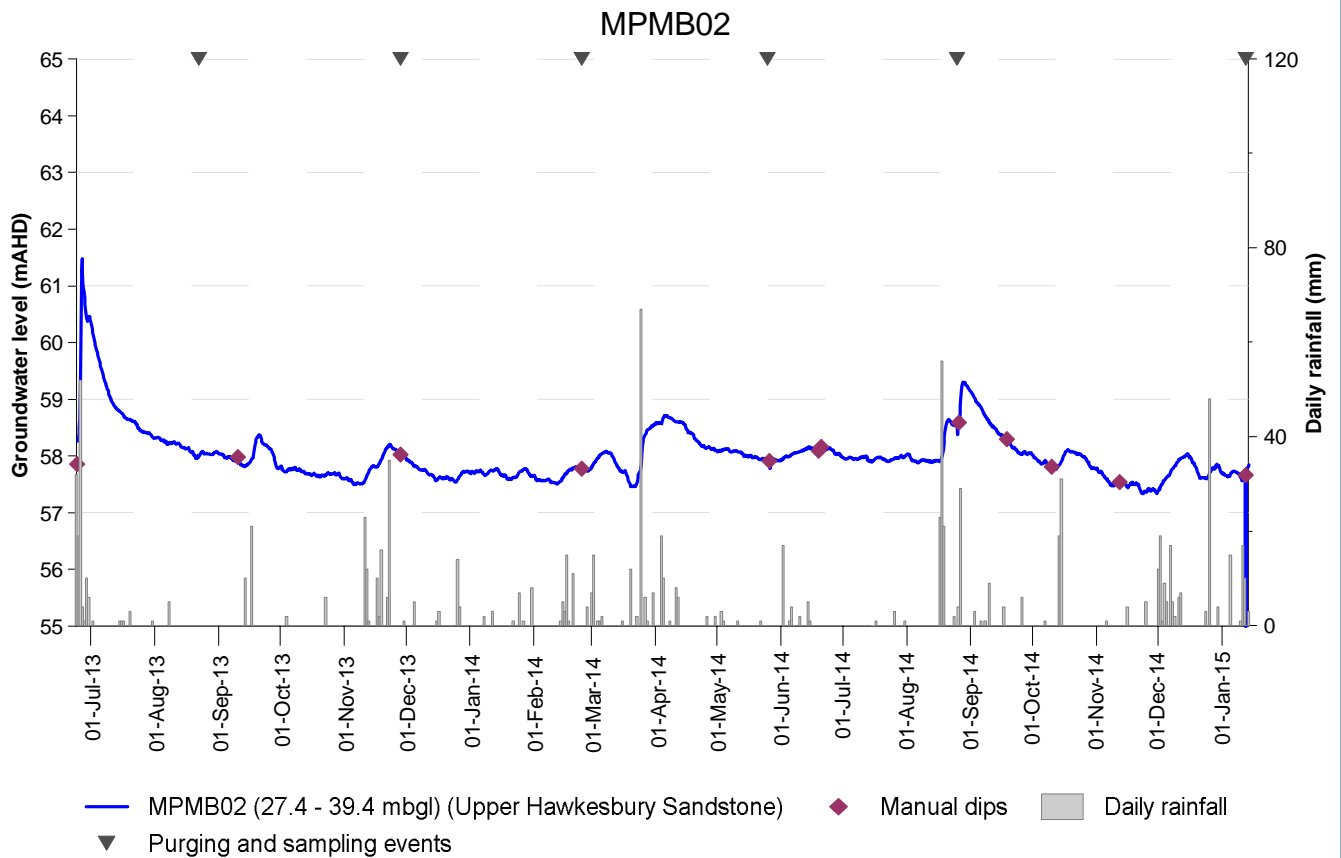
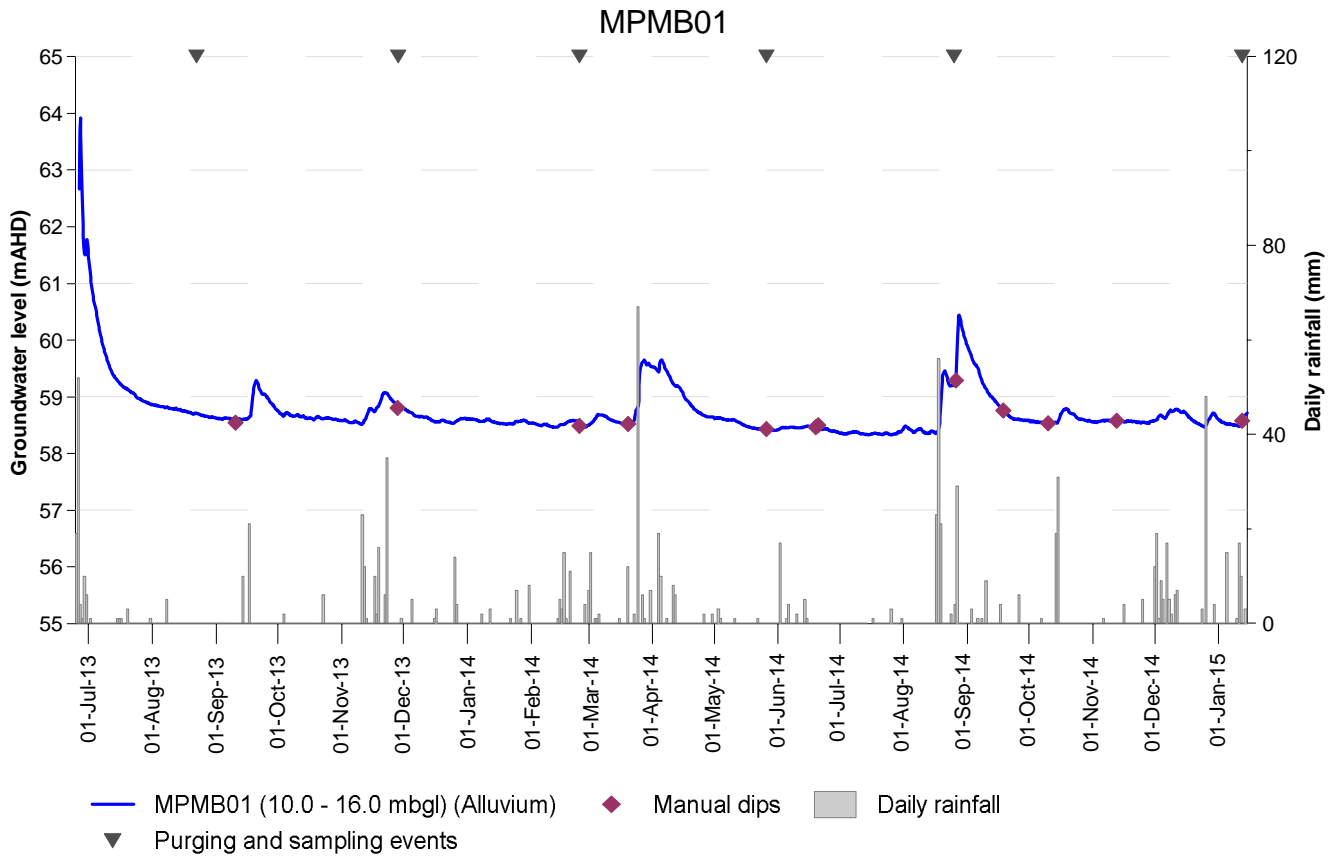


Figure A.3: MPMB01 and MPMB02 monitoring bores

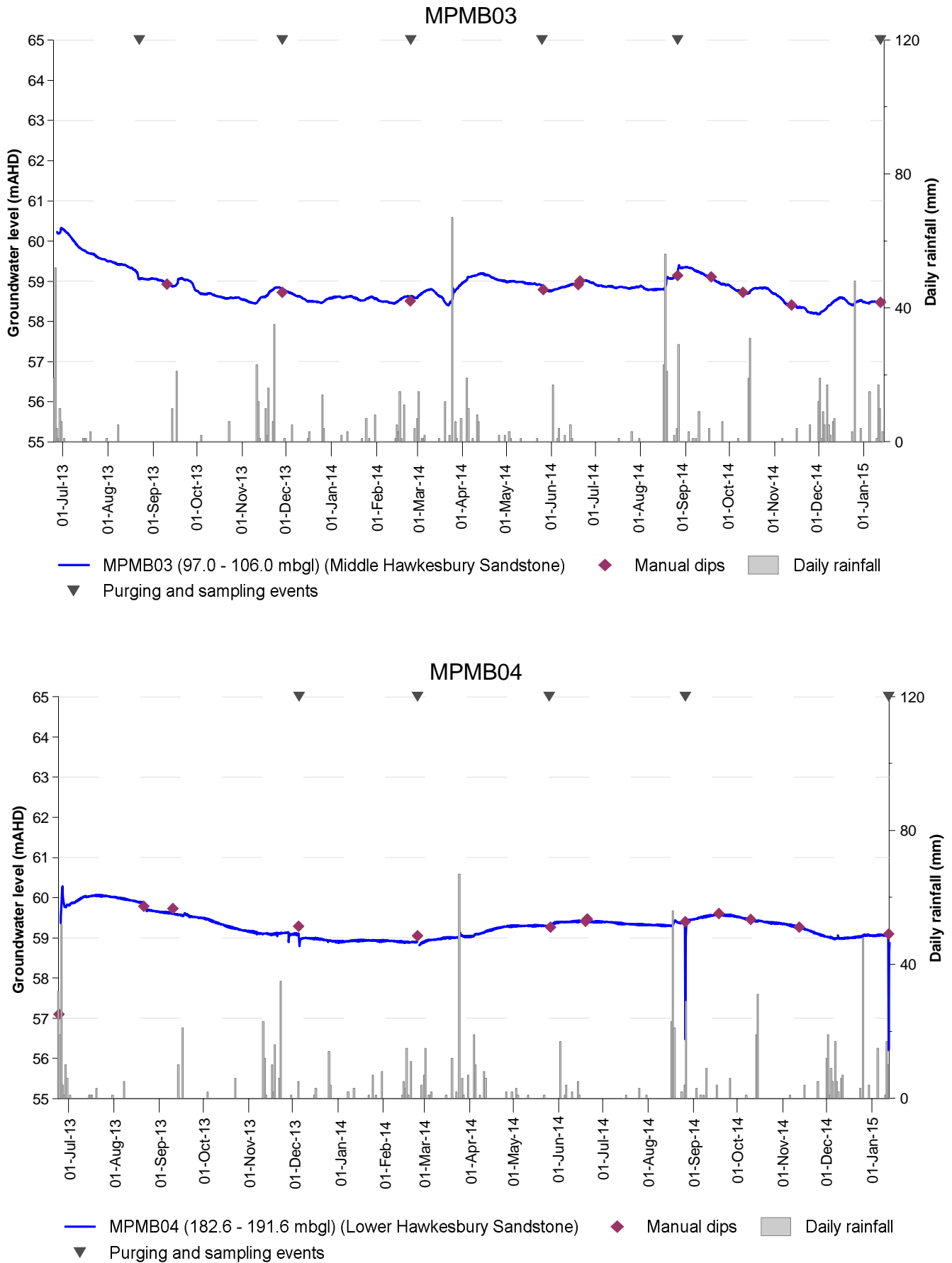


Figure A.4: MPMB03 and MPMB04 monitoring bores

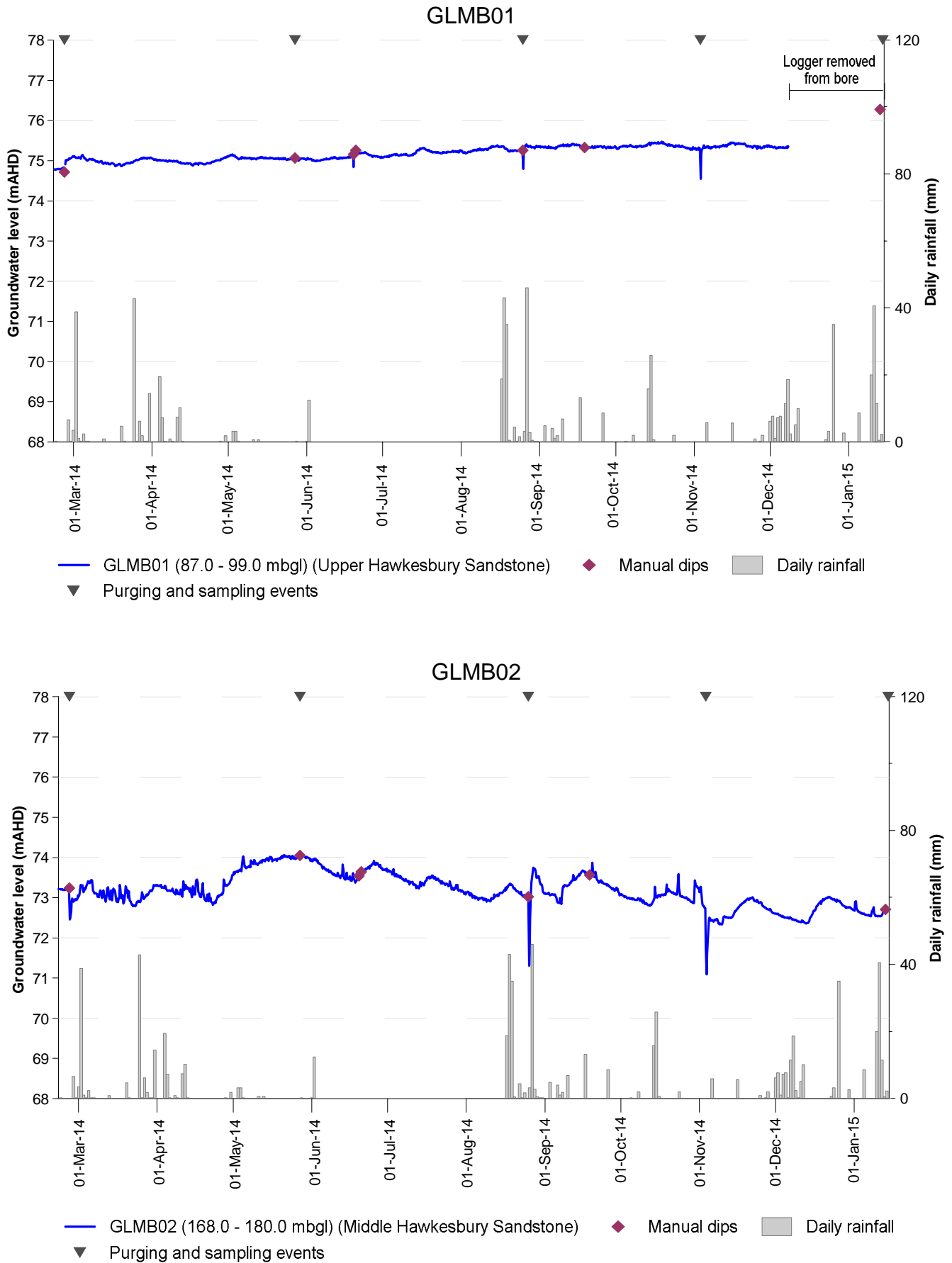


Figure A.5: GLMB01 and GLM02 monitoring bores

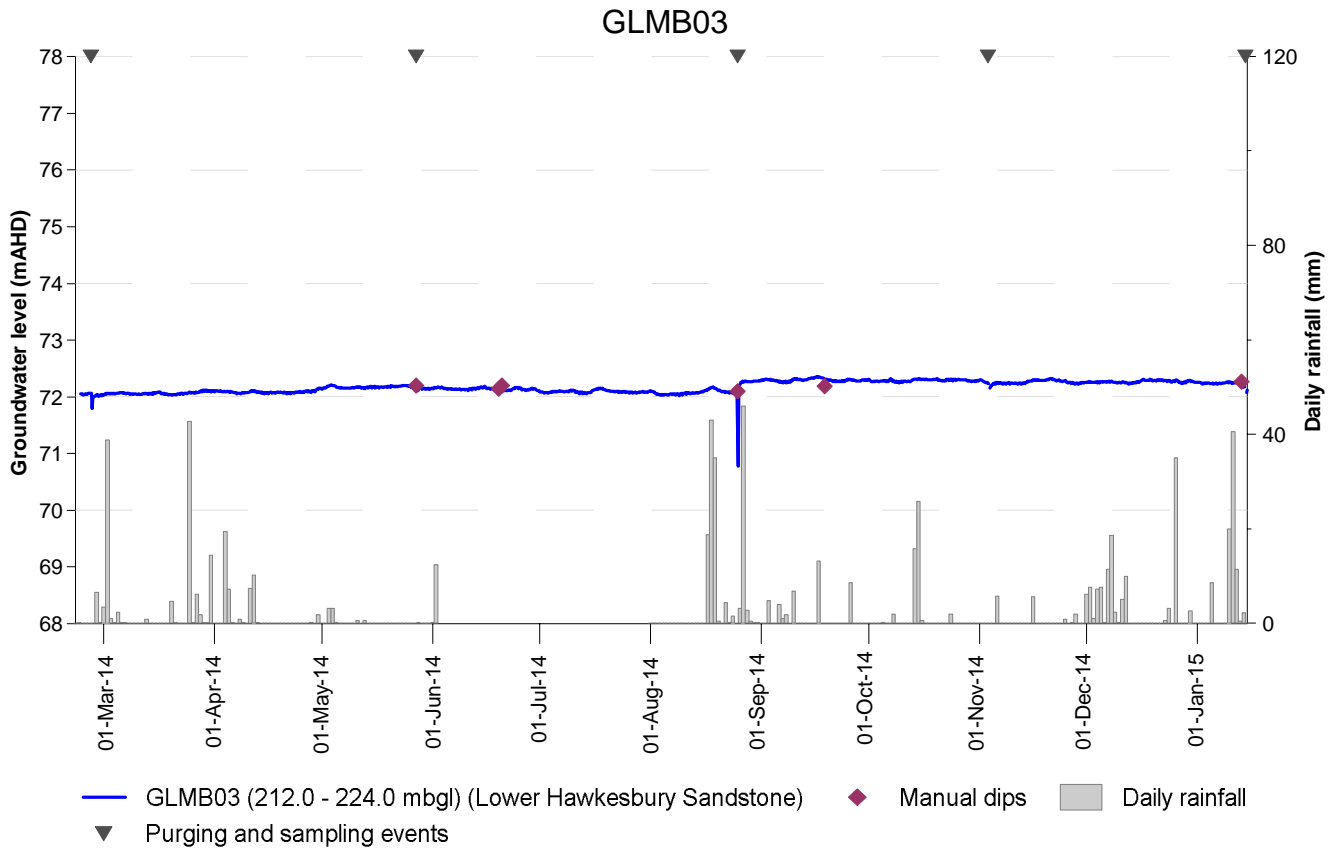


Figure A.6: GLM03 monitoring bore

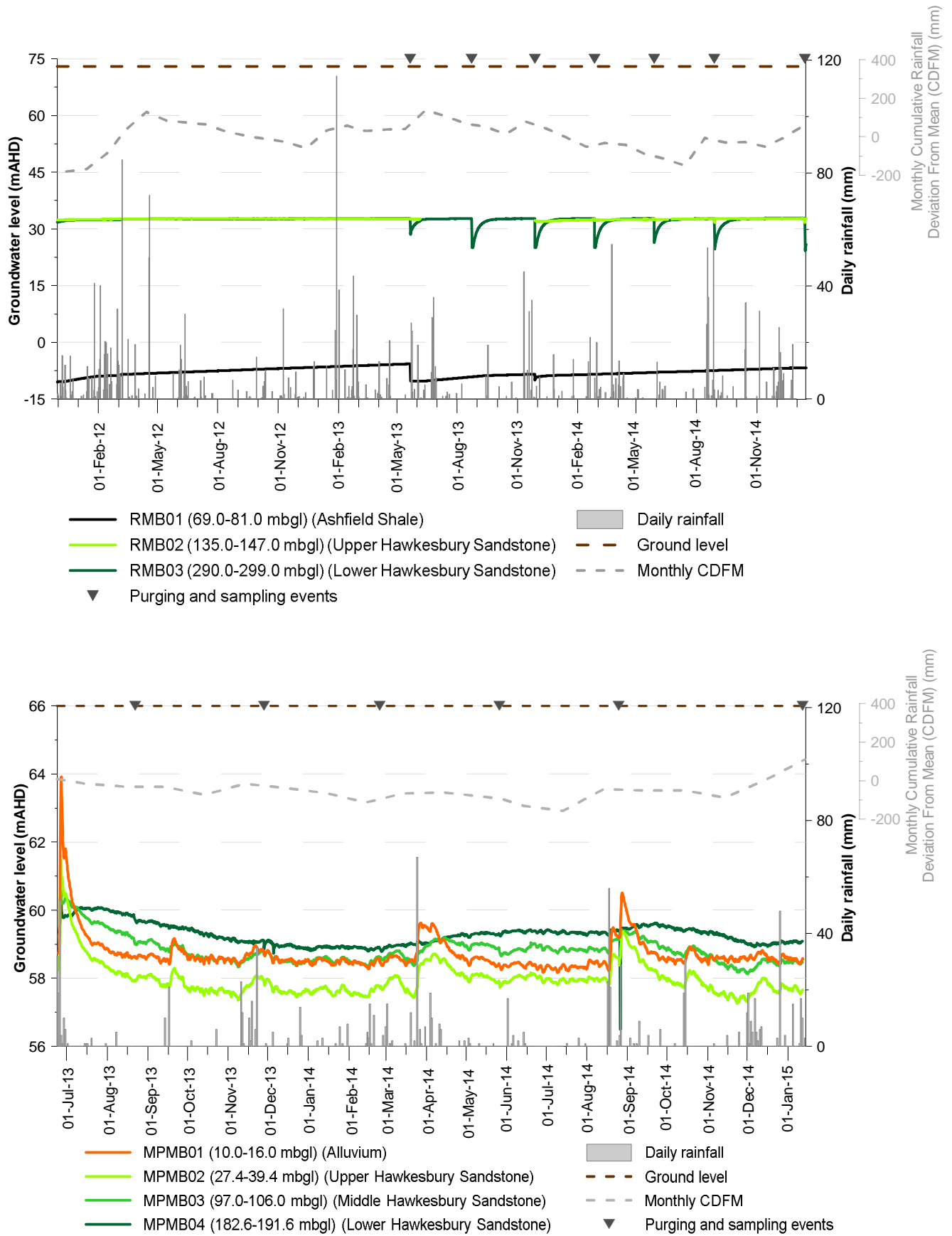


Figure A.7: RMB and MPMB monitoring bores



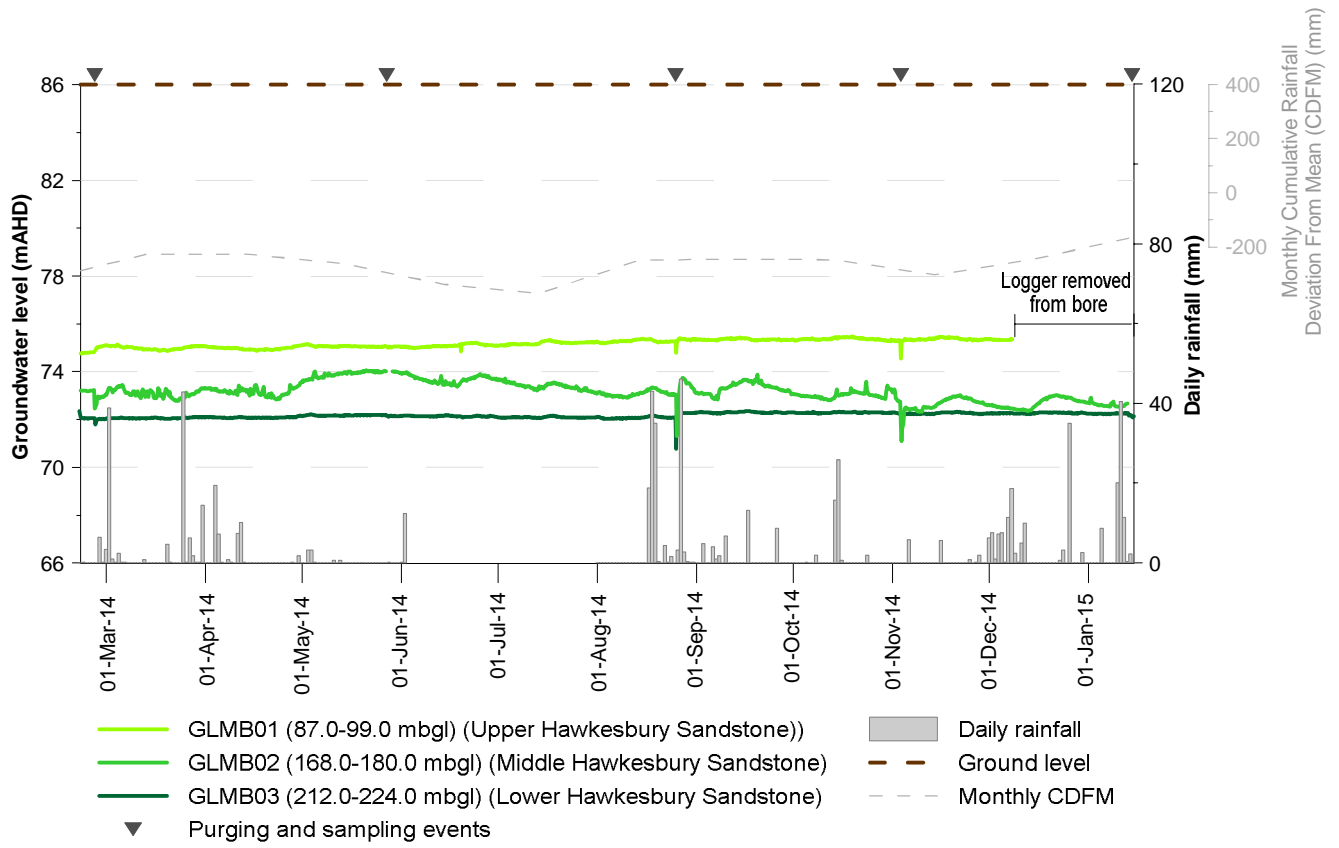


Figure A.8: GLMB monitoring bores

