

# Camden Gas Project Community Consultative Committee

14 March 2018



# Agenda



1

Open & Welcome  
Previous Minutes  
Business Arising

2

Correspondence

3

Reports & Presentations

- AGL update
- Operations & Environment
- Community & Stakeholders

4

General Business

5

Next Meeting Date

6

Close

A blue wave graphic at the bottom of the page, starting from the left edge and curving upwards towards the right. The wave is a gradient of blue, from a darker blue at the bottom to a lighter cyan at the top.

Reports &  
Presentations

# Reports & Presentations

## AGL Update

### AGL Home Energy Efficiency Guide

- A guide to bring together small ways to help make a difference to home energy bills.

#### Fast facts:

- Heating and cooling uses the highest percentage of energy usage in the average Australian home.
- Wi-Fi uses a substantial amount of power, it's best to switch it off at the wall before you go out.
- Homes can lose up to 40% of heating in winter through windows.

Friends and family may be eligible for a State-funded energy concession or grant. To help to navigate this space, check out <https://www.agl.com.au/heretohelp>, it's a tool that helps to find financial assistance options. AGL will create a personalised action plan that connects you to relevant concessions and grants.



Operations & Environment

# Operations & Environment

## Decommissioning and Rehabilitation



Production Well Status	Total (as at 14 March 2018)	Total (as at 20 September 2017)
Drilled (total wells)	144	144
Production and dewatering wells	92	92
Suspended or shut in wells	20	24
Well in process of decommissioning	0	1 (EM16)
Wells subsurface decommissioning complete	32	27
Land in process of being rehabilitated	12 (EM16, JS01, JS03, JS04, LP01, MT09, MT10, RP03, RP04, RP05, RP06, RP11)	7 (MT09, MT10, RP03, RP04, RP05, RP06, RP11)
Land fully rehabilitated and returned to landowner	20	20

# Operations & Environment

Surface rehabilitation examples



**MT09 December 2017**

**MT09 January 2018**

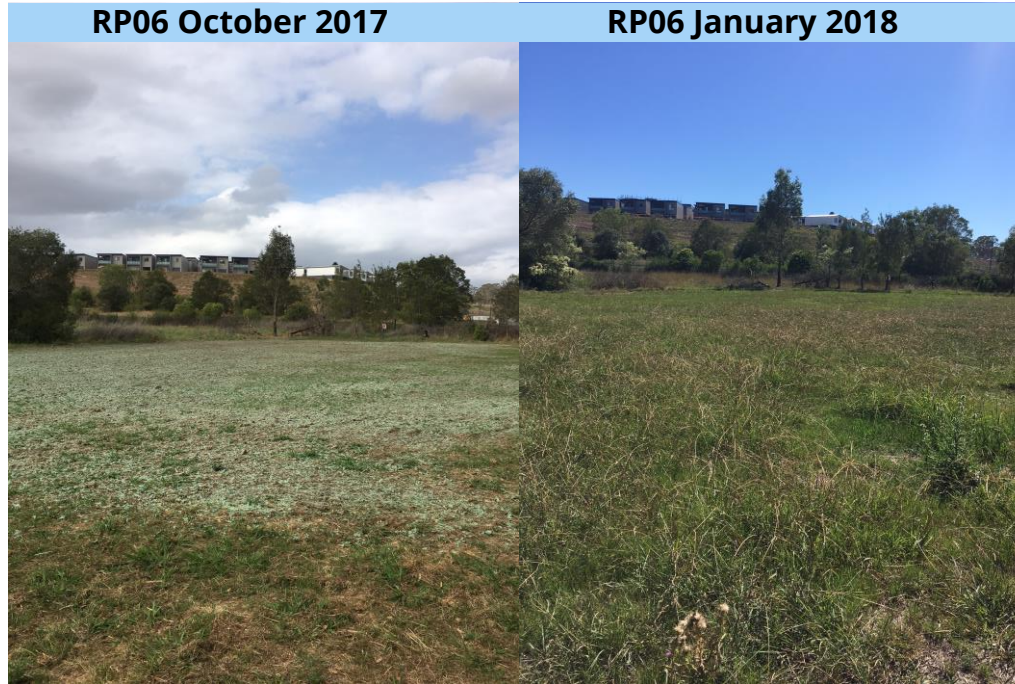
**EM16 October 2017**

**EM16 January 2018**



# Operations & Environment

Surface rehabilitation examples



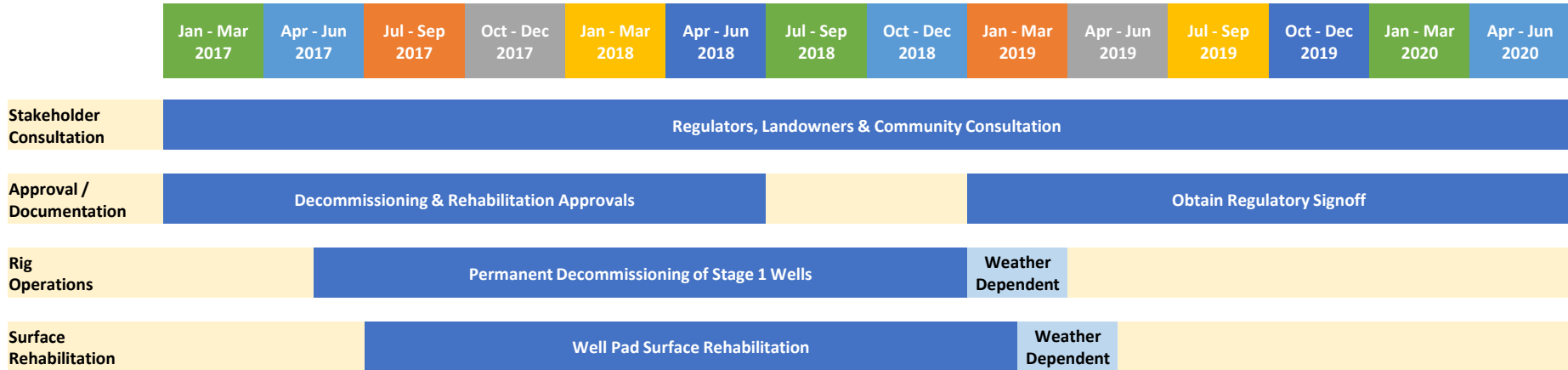


# Operations & Environment

## Decommissioning and Rehabilitation



### Camden Rehabilitation Project - Stage 1 Projected Timeline



# Operations & Environment

## MT05 & MP01 well swap

- AGL intends to modify our program to decommission and complete the initial rehabilitation of the MT05 well instead of MP01 well.
- MT05 has reached the end of its economic life, therefore decommissioning and surface rehabilitation can be completed now and site returned to landholder.
- MP01 is on the same site as other producing wells. Decommissioning and surface rehabilitation of MP01 coincident with rehabilitation of other wells on the same site to minimise truck movements and disturbance.
- We expect to complete decommissioning of MT05 around the middle of this year, dependent on site access (weather) and obtaining regulatory approvals.

Stage One Well Decommissioning & Rehabilitation Program			
Announced program		Revised program	
Well Name	Well Number	Well Name	Well Number
Elizabeth Macarthur	16, 34	Elizabeth Macarthur	16, 34
Glen Lee	16	Glen Lee	16
Joe Stanley	01, 03, 04	Joe Stanley	01, 03, 04
Lipscome	01	Lipscome	01
Menangle Park	01, 05	Menangle Park	<del>01</del> , 05
Mount Taurus	09, 10	Mount Taurus	09, 10, <del>05</del>
Rosalind Park	02, 06, 10, 12	Rosalind Park	02, 06, 10, 12
Sugar Loaf	09	Sugar Loaf	09
Wandinong	06	Wandinong	06

# Operations & Environment

## Environmental Monitoring and Reporting

- **RPGP noise monitoring** – December 2017 quarterly monitoring were compliant with noise criteria. No noise complaints received. Next monitoring in March.
- **Spring Farm well site noise monitoring** – Monitoring completed in February, all results compliant with noise criteria. No noise complaints received.
- **RPGP air emissions monitoring** – December 2017 quarterly monitoring were compliant with licence limits. Results of March 2018 quarterly monitoring yet to be received.
- **Annual Leak Detection and Repair Report** – Report uploaded to CGP website, significant reduction in leaks detected. All leaks repaired within EPA repair response timeframes.
- **Environment Protection Licence Annual Return Report** – Submitted to the EPA in February. One non conformance reported relating to Continuous Emissions Monitoring at RPGP. Non conformance has been addressed through EPL Variation.



Community & Stakeholders

# Community & Stakeholders

## Local Community Investment Program update

### Approved applicants

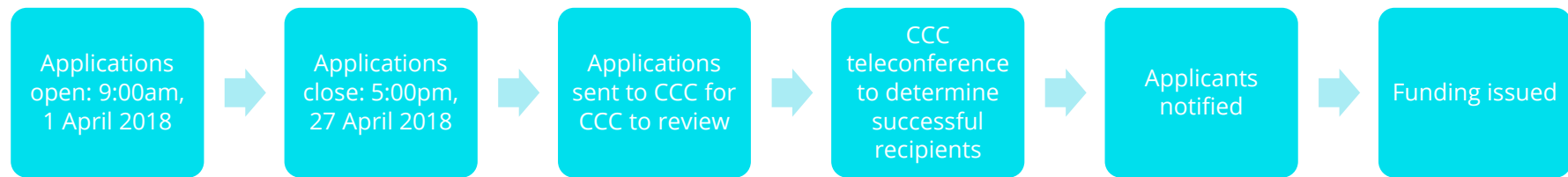
- Kentlyn Public School, for a new dishwasher and oven
- Macarthur Preschool, for the installation of energy efficient lighting
- The Oaks Pony Club, for the completion works for a new toilet block
- Picton Rangers Soccer Club, for the upgrade of the parking lot at Hume Oval
- Douglas Park Little Athletics, for the establishment of a new building to store equipment

Camden Gas Project Local Community Investment Program Status			
Organisation	Invoiced and paid	Work complete	Program report to AGL
Kentlyn Public School	✓	✓	
Macarthur Preschool	✓		
The Oaks Pony Club			
Picton Rangers Soccer Club	✓		
Douglas Park Little Athletics			

# Community & Stakeholders

## Local Community Investment Program

- Review of LCIP process to date.
- Proposed process for LCIP round two:



# Community & Stakeholders

## Camden Show

AGL are sponsoring the Camden Show for a fifth year.

This year we are hosting a tent for AGL customers. Our customers visiting the tent will be offered discounts for their electricity and gas accounts and can have their bill explained.

AGL team members will also be able to answer any questions about the Camden Gas Project and our operations.

### The locals deal:

As AGL operates the Camden Gas Project in the Macarthur, local community members are eligible for a special offer.

- Sign up online: [agl.com.au/communityoffer](https://agl.com.au/communityoffer)
- Promotional code: **community**



# Community & Stakeholders

## Return & Earn

Led by Environment Business Partner Aaron Clifton, the new Return and Earn program at the Camden Gas Project encourages AGL people to collect cans and bottles for recycling.

These are taken to the local reverse vending machine in Camden, with all proceeds going to charity.

Since November 2017 the team has collected and recycled more than 580 cans and bottles, donating over \$100 to Clean Up Australia.





# Community & Stakeholders

## Business Clean Up Australia Day

Seven team members from the Camden Gas Project recently participated in Clean Up Australia's 'Business Clean Up Day'.

Roadside reserves along Medhurst Road, Glenlee Road and Cummins Road were targeted by the team.

The team cleaned up roads spanning 2km over a period of four hours, filling three AGL utes with about 3m<sup>3</sup> of waste for disposal or recycling.

The day was a great opportunity for some team building, while doing the right thing for the environment and giving back to the Macarthur community.



# Contact



## **Alex Fitzpatrick**

Manager, Government & Community  
Relations

[AGLCommunity@agl.com.au](mailto:AGLCommunity@agl.com.au)