

Camden Gas Project CCC Update

COOPER

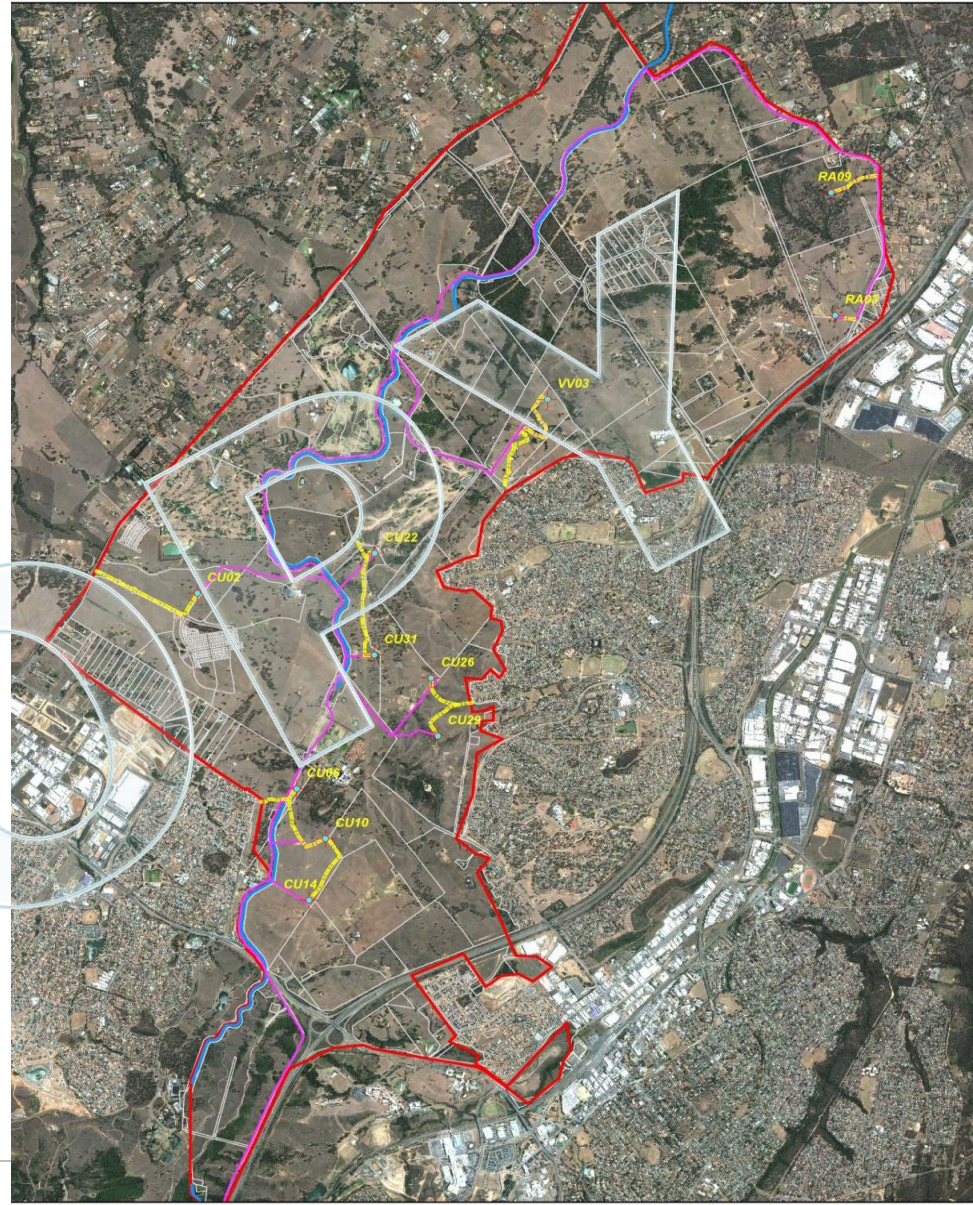


Community Consultative Committee
March 2013.

Northern Expansion

Recent developments;

- Public exhibition from 6th November 2012 - 18th December 2012, was extended to 8th Feb 2013.
- EPBC referral submitted to SEWPaC for review in 23rd Nov 2013.
- IESC has reviewed and issued advice to SEWPaC.
- 8th Feb - AGL requests suspension of the assessment, to allow further time for community consultation.
- 18th Feb – New rules for CSG activity announced by the NSW Govt:
 1. EPA will be the lead regulator of environmental and health impacts of CSG activities in NSW.
 2. All exploration activities will be required to hold an Environment Protection Licence.
 3. The Chief Scientist and Engineer will conduct an independent review of all CSG activities in NSW.
 4. A two kilometer exclusion zone will be imposed around residential zones.
 5. Exclusion zones will apply to identified Critical Industry Clusters (viticulture and the equine industry)
 6. An office of CSG regulation established within DTIRIS
- Currently awaiting proposed Mining SEPP amendments.



Well Summary

Production Well Status	Number (as of 14/03/13)
Drilled (total wells)	144
Wells under construction	0
Producing and dewatering wells	105
Suspended	31
Plugged and abandoned	8

Exploration Core Hole Status	Number (as of 14/03/13)
Drilled, Plugged and Abandoned (Camden North)	6
Drilled, Plugged and Abandoned (remainder PEL2)	3

Health, Safety and Environment

- › Submitted EPA Annual Return Report
 - » 4 non compliances reported
- › Expanded Air and Water Monitoring Program
 - » Media Release 01 March
 - » Public Consultation Session 04 April
- › MP 25 flooding
 - » No pollution incidents occurred
 - » Investigations by EPA and DTIRIS
 - » Bubbling determined to be a natural process
 - » EPA inspection undertaken for all wells in flood prone areas
- › Environmental Health Risk Assessment commenced

Well Site Security

- > Security audit by 3rd party security specialist

- > Mobile security trailer
 - » Support workover rig and other major field activities

- > Fixed security cameras
 - » High risk well sites



Well Site Security

The screenshot displays the M5 Security web application interface. At the top left is the M5 SECURITY logo. The navigation menu includes DASHBOARD, BUSINESS, SITES, and CAMERAS. The user is logged in as 'Name Not Set' with a 'Log Out' option. The left sidebar shows a tree view of cameras under 'AGL' and 'Menangle Demo', with 'Camera (00003618)' selected. The main area features a live video feed of a white truck behind a chain-link fence, with a large 'COPY' watermark overlaid. The right-hand panel contains a 'Camera Details' section for 'Camera Camera (000037d7)', showing image details and a 'Settings' button. Below that is the 'Current Image Details' section, indicating the image was received on 14/03/2013 at 13:35 and is the 32nd of 32 images. The 'Image Search' section allows filtering by date range (12/03/2013 to 14/03/2013) and time (17:00 to 13:59), with a 'Search' button. The bottom right corner shows the 'rad3' and 'M5 SECURITY' logos.

- > Community Consultative Committee
- > March 2013

Drilling and well workovers

- > No Drilling since September 2012.

- > Well workovers undertaken:
 - » EMAI, Glenlee, Kay Park, Razorback, Mt Taurus, Menangle Park, Spring Farm,

- > Next well workovers:
 - » Menangle Park, Razorback, Wandinong

COPY

Civil Earthworks and Gas Gathering Line

- > Menangle Park 11/22 further rehabilitated.
- > Menangle Park 03 gas gathering line connection completed.
- > Further rehabilitation to be completed at Menangle Park 25.

COPY

Rosalind Park Gas Plant

- › Quarterly noise monitoring
 - » Conducted in December 2012
 - » All results compliant
 - » Next scheduled for March

- › Quarterly air emissions monitoring
 - » Conducted in December 2012
 - » All results compliant
 - » Next scheduled for March

COPY

Continuous Emissions Monitoring

- › Monthly external verification monitoring continues
- › Exceedances recorded by AGL in September, November and December 2012
- › EPA notified of the exceedance and P.I.N. issued to AGL (13.03.2013)
- › New CEMS for Compressor 1 now installed, fully functional and currently being externally verified
- › EPA inspection of CEMS unit on 14.03.2013
- › Monthly air emissions monitoring reports uploaded to AGL website

COPY



- > Community Consultative Committee
- > March 2013

Community

Participation in Campbelltown Community Forums

- February 13, 14, 20 & 21
- approximately 900 people attended
- speakers from a range of organisations including Campbelltown Council, EPA, Doctors for the Environment, NSW Health and AGL

Update on Open Days and visits to the Camden Project

- Media Open Day, November 22
- Community Drop in Sessions- Northern Expansion- November 27, 28 & December 1
- Russell Matheson MP visit to RGP, December 6
- NSW Government Open Day- Community Open Day, January 22
- Community Open Day, February 1

Supporting Camden Show

- March 15 & 16
- AGL information marquee
- supporting the AGL Lumberjacks Spectacular and Beef Cattle