

Camden Gas Project CCC Update

COOPER



Community Consultative Committee
November 2012



Energy in
action.®



Camden Gas Project Operations and HSE Update

Camden CCC | 15 November 2012 | AGL External

Operations Summary

Production Well Status	Number (as of 15/11/12)
Drilled (total wells)	144
Wells under construction	0
Producing and dewatering wells	105
Suspended	31
Plugged and abandoned	8

Exploration Summary

Exploration Core Hole Status	Number (as of 15/11/12)
Drilled, Plugged and Abandoned (Camden North)	6
Drilled, Plugged and Abandoned (remainder PEL2)	3

COPY

Health, Safety and Environment

- › Independent consultants approved and engaged to undertake 2 yearly Independent Environmental Audit.
- › Continued Preparation of Annual Environmental Performance Report.
- › Submitted response to the EPA's CEMS Non Compliance Written Report Request.
- › Incident Notification Protocol and Community Notification Protocol prepared.
- › National Pollutant Inventory Report submitted.
- › External consultants engaged to investigate best management practices and monitoring techniques for fugitive emissions (PRP 4.2).

Drilling and well workovers

- › Drilling completed on MP25 in September.
 - » Noise monitoring undertaken to ensure compliance with noise limits
 - » Drill rig is now working in Gloucester
- › Well workovers undertaken:
 - » Menangle Park
 - » Spring Farm
- › Next well workovers:
 - » Menangle Park
 - » Spring Farm
 - » Glenlee
 - » Sugarloaf

COPY

Civil Earthworks and Gas Gathering Line

- › Spring Farm 20 location fully rehabilitated.
 - » 500 native screen trees planted surrounding site
- › Menangle Park 25 initial rehabilitation completed.
- › Menangle Park 03 gas gathering line connection commenced.

COPY

Rosalind Park Gas Plant

- › Quarterly noise monitoring
 - » Conducted in August 2012
 - » All results compliant
 - » Next scheduled for tonight

- › Quarterly air emissions monitoring
 - » Conducted in September
 - » All results compliant
 - » Next scheduled for December

- › Monthly air emissions monitoring reports uploaded to AGL website

Strategic Regional Land Use: Pre-SRULP

Key Pre-SRULP initiatives included:

- › Moratorium on the granting of new licences – including no new PPLs until there is a comprehensive framework for the regulation of the CGS industry
- › Moratorium on fracture Stimulation
- › Ban on the use of BTEX chemicals
- › Ban on the use of evaporation ponds
- › New public exhibition requirements, and new community consultation guidelines.
- › Stricter Review of Environmental Factors (REFs) guidelines for exploration
- › 'Agricultural Impact Statement' requirements
- › Amendments to the *Environment Protection Biodiversity Conservation Act (Cth)* to establish the Independent Expert Scientific Committee on Coal Seam Gas and Coal Mining (IESCC)

Strategic Regional Land Use: The Package

- › Reforms to regulate exploration – Incl. compulsory community consultation requirements
- › Creation of Land & Water Commissioner - Provide guidance to landholders
- › Strategic Regional Land Use Plans - currently only for the New England North West and the Upper Hunter. Other priority areas include Central West and the Southern Highlands :
 - » map Strategic Agricultural Land – Biophysical Strategic Agricultural Land; and
 - » clusters of significant agricultural industries known as Critical Industry Clusters
 - » impose a new Gateway Process for mining and CSG projects
- › Requirement for an Agricultural Impact Statement
- › The Aquifer Interference Policy
 - » New State-wide AI Policy
 - » Sets out the level of assessment required for aquifer interference activities.

Codes Of Practice

› Two new Codes of Practice:

1. Code of Practice for Coal Seam Gas – Well Integrity

- Covers range of aspects including well design, casing, cementing, well heads, drilling fluids, logging and testing, monitoring and maintenance and abandonment

2. Code of Practice for Coal Seam Gas – Fracture Stimulation Activities

- Requires a fracture stimulation management plan, to include details of stakeholder consultation, fracture stimulation design, risk assessment, the use of chemicals, water management and an emergency plan

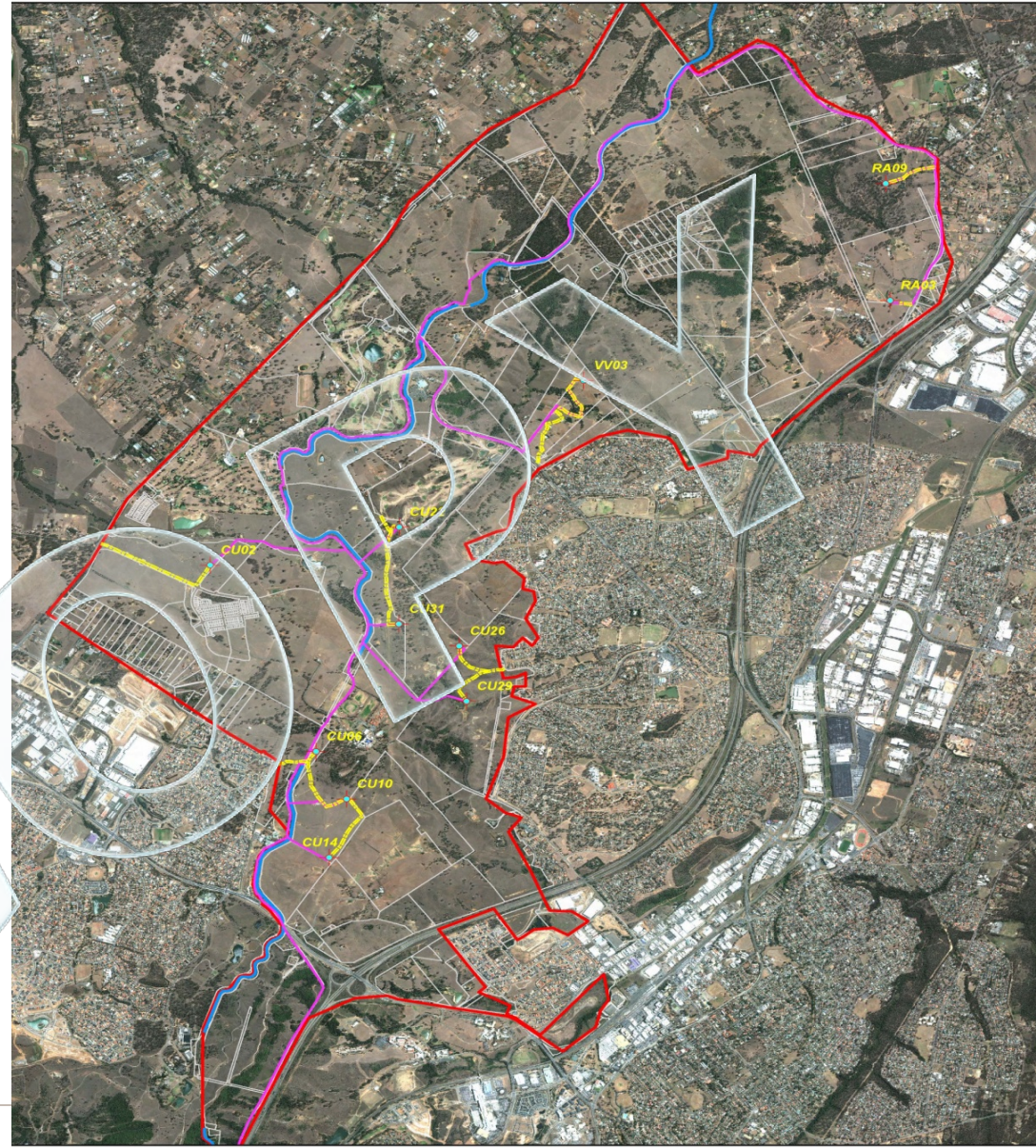
» Includes technical codes which will be enforced by new PEL and PPL conditions.

» Codes of Practice for Exploration to be finalised.

Northern Expansion

Submissions Stage:

- On public exhibition from 6 November 2012 - 18 December 2012 via;
 - The Department of Planning & Infrastructure office and website
 - AGL Camden Gas Project website
 - Camden Council
 - Campbelltown Council
 - Nature Conservation Council
- The revised application incorporates several changes to the project in response to submissions received.
 - Detailed groundwater information including a monitoring plan and updated modeling.
 - Several well locations have been changed with a reduction from 12 to 11 locations.
 - Updated flora and fauna study has also been prepared, demonstrating that the potential impacts of the project have been minimised.
 - Minister asked the Planning Assessment Commission (PAC) to undertake a merit review of the project.
 - EPBC Referral to be lodged within the next couple of weeks.



Groundwater Monitoring/PEL Update

-Phase 1 complete.

-Phase 2;

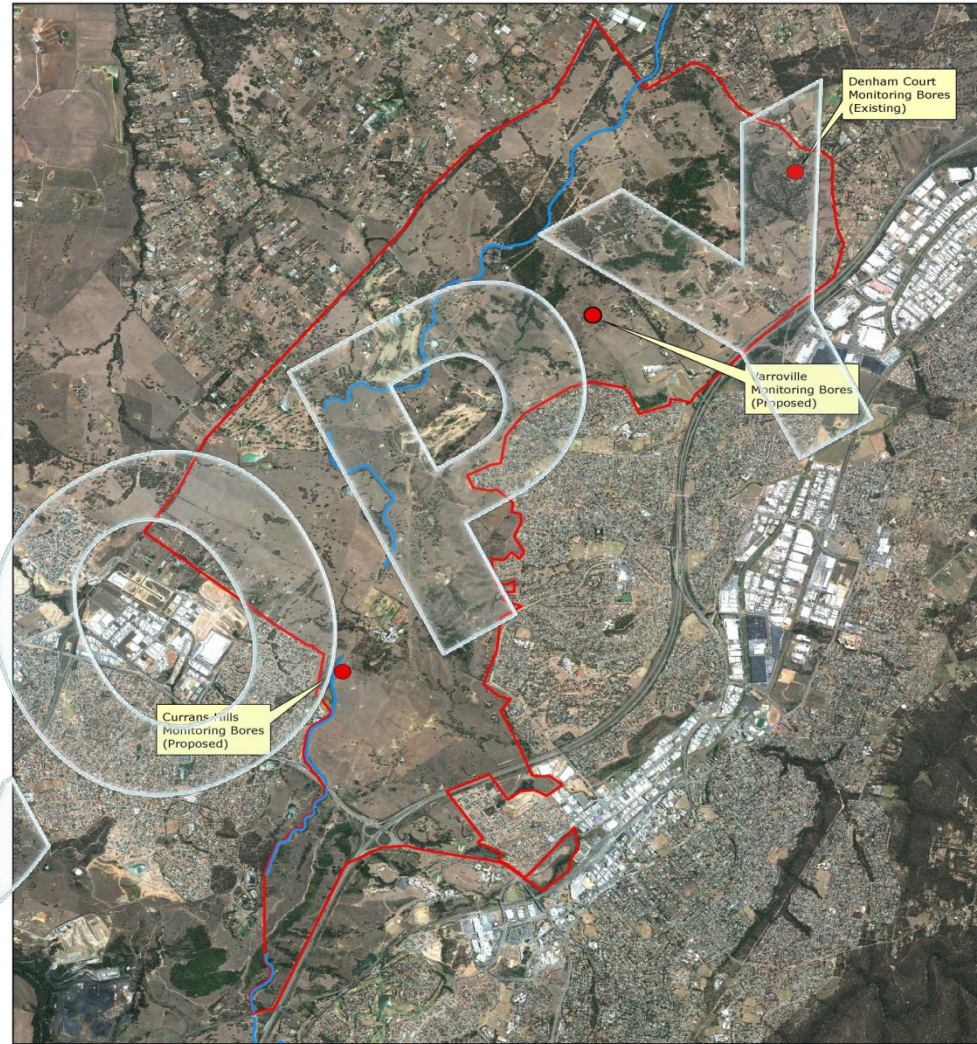
-Denham Court Monitoring Bore installed. Data to be collated and included in response to submissions.

-Varroville monitoring location confirmed.

-Currans Hill monitoring location confirmed.

-6 months of data to be collected to develop results for the report.

-PEL 2 yet to be renewed.



Community

Update on past community events

- Campbelltown Show, September 1
- AGL 175 Roadshow, October 6- 9, Camden Showground's
 - Community Days- Saturday and Sunday- 100 visitors
 - School Days- Monday and Tuesday- 270 students
 - Cocktail evening- Monday, 6- 8.00pm- 55 guests

Update on Open Days and visits to the Camden Project

- Camden Community Open Day, September 27,
 - 28 attendees
- Camden Community Open Day, November 10
 - 17 attendees
- Country Women's Association , Agricultural & Environment Committee(NSW), November 9
 - 10 attendees

Community

Community Support and Sponsorship

- Light up Camden
- Christmas in Narellan
- Wollondilly Christmas Lights Competition
- Donation of \$8,000 of food to Nagle Care Centre- Saint Vincent De Paul's

Upcoming community events

- Media Open Day- November 22
- MP visit- December 6

COPY