



# Broken Hill Solar Plant

AGL ENERGY LIMITED

Staging Report

R\_HA01732.201 | 0

HA01732.201

September 2014



## Broken Hill Solar Plant

**Project no:** Project Number  
**Document title:** Broken Hill Solar Plant Staging Report  
**Document no:** R\_HA01732.201\_0  
**Revision:** 0  
**Date:** 25/09/2014  
**Client name:** AGL Energy Ltd  
**Client no:** AGLE-GCOR-000081  
**Project manager:** Charles Barrett  
**Author:** Cameron Weller  
**File name:** I:\HARB\Projects\HA01732\Technical\Environmental\Post approval work\Staging Report\HA01732.201-Broken Hill Staging Report\_Rev 0.docx

Jacobs  
 100 Christie Street  
 St Leonards, NSW 2065  
 T (02) 9928 2125  
 F (02) 9928 2224  
[www.jacobs.com](http://www.jacobs.com)

COPYRIGHT: The concepts and information contained in this document are the property of Sinclair Knight Merz (Jacobs SKM). Use or copying of this document in whole or in part without the written permission of Jacobs SKM constitutes an infringement of copyright. Jacobs® is a trademark of Jacobs Engineering Group Inc.

### Document history and status

Revision	Date	Description	By	Review	Approved
A	25/03/2014	Broken Hill Solar Plant Staging Report - draft	C. Weller	C M O'Keefe	
B	27/06/2014	Broken Hill Solar Plant Staging Report - draft final	A Hammond	C Jeannot	
0	25/09/2014	Broken Hill Solar Plant Staging Report - final	A Hammond	C Jeannot	A Hammond

## Contents

1.	Introduction.....	2
1.1	Project Overview.....	2
1.2	Legislative Context.....	2
1.3	Aim and structure of this report.....	4
2.	Proposed Stages.....	5
2.1	Prior to construction.....	5
2.2	Stages.....	5
3.	Addressing Minister’s Conditions of Approval.....	9

## ACRONYMS AND ABBREVIATIONS

BFMP	Bushfire Management Plan
BOMP	Biodiversity Offset Management Package
CEMP	Construction Environmental Management Plan
CIP	Community Information Plan
CNMP	Construction Noise Management Plan
DG	Director General
EP&A Act	<i>Environmental Planning and Assessment Act</i>
FFMP	Flora & Fauna Management Plan
GCMP	Ground Cover Management Plan
HMP	Heritage Management Plan (Aboriginal & Non-Aboriginal)
LMP	Landscape Management Plan
MCoA	Ministers Conditions of Approval
NSW	New South Wales
OEH	Office of Environment and Heritage (NSW)
P&I	Planning and Infrastructure
SoC	Statement of Commitment
TMP	Traffic Management Plan
WMP	Waste Management Plan

## 1. Introduction

### 1.1 Project Overview

AGL Energy Limited (AGL) will construct the Broken Hill Solar Plant, in Western New South Wales, approximately 5 kilometres south-west of Broken Hill. The Project Approval for the Broken Hill Solar Plant (MP10\_0202) encompasses the construction, operation and decommissioning of a solar photovoltaic (PV) power station and associated connection works, including installation and operation of a double circuit 22kV overhead transmission line, approximately 2.7 kilometres in length, to connect the PV plant to the electricity grid at the TransGrid Broken Hill substation. An existing Essential Energy 22 kV transmission line that traverses the proposed plant site, would be realigned around the solar plant as part of enabling works.

The solar plant will have a capacity of up to approximately 53 MW. The proposed solar plant site is Crown land located within an unincorporated area which is administered by the Crown Lands Division of the Department of Trade and Investment. The solar plant site is located between the Barrier Highway to the north and the Peterborough - Broken Hill rail line to the south, wholly within Lot 6806 Plan 823918.

Approximately 200 hectares of land would be required for the proposed nominal 53 MW plant. The site comprises a cleared, relatively flat area with numerous unsealed access tracks scattered throughout. There is currently one residence located in the northern part of the property with several other sheds located nearby.

The easement to accommodate construction and maintenance of the new proposed double circuit 22kV overhead transmission line would be 30 metres wide and approximately 2.7 kilometres long. The easement for the proposed realignment of the existing transmission line would be around 10 metres wide. The proposed transmission line would be located within the Broken Hill LGA and would traverse four land holdings, including the Peterborough - Broken Hill rail line and its associated easement. An indicative site layout is shown in Figure 1-1.

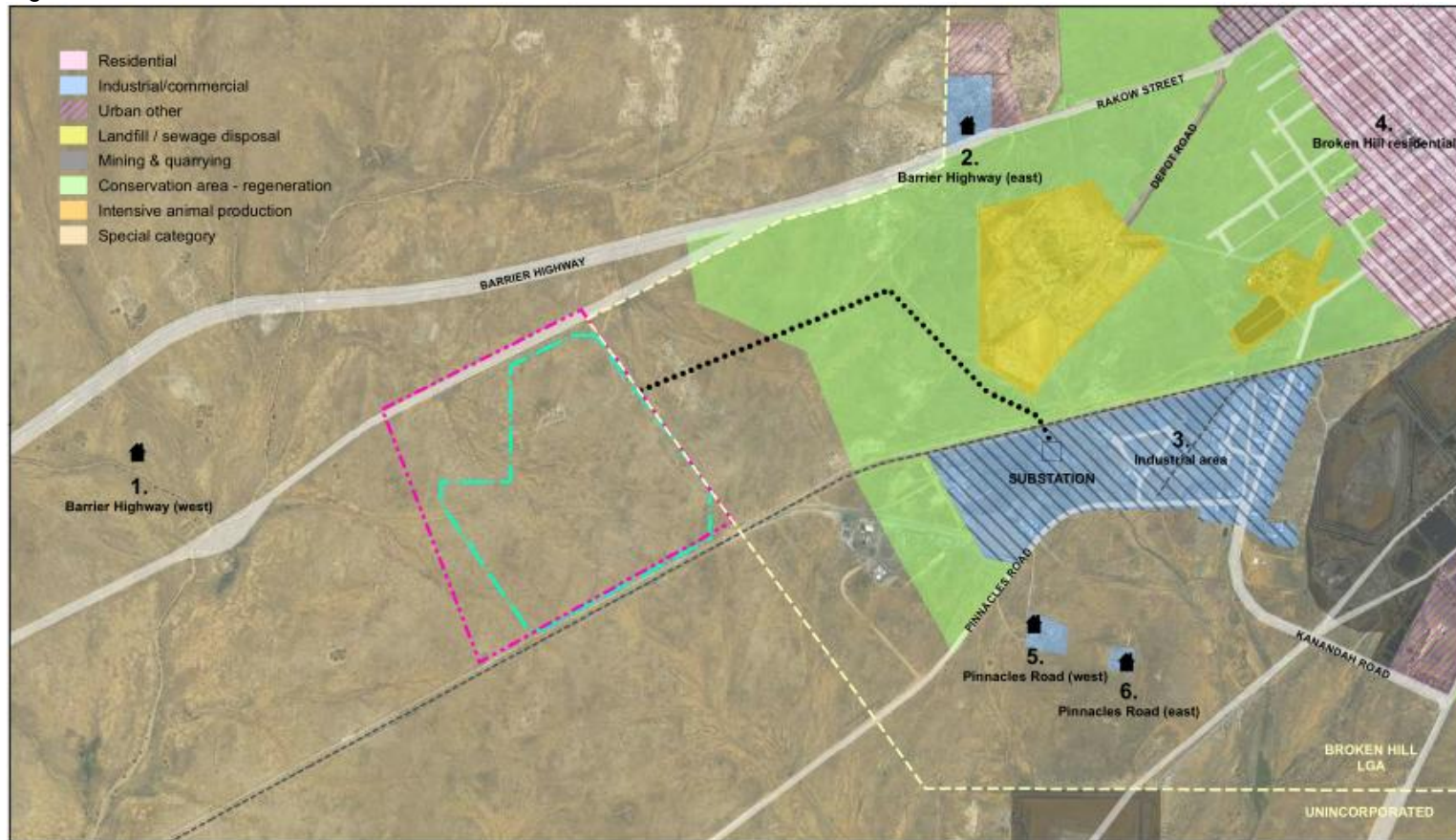
The solar plant is expected to have a 30 year operating life. Decommissioning would remove all above ground infrastructure and any underground infrastructure to a depth of 300 mm, rehabilitating the site to allow for a return to agricultural or other land use.

### 1.2 Legislative Context

Project Approval was granted under Section 75J of the *Environmental Planning and Assessment Act 1979* (EP&A Act) on 27 March 2013.

The project was classified as critical infrastructure in accordance with Section 75C of the EP&A Act by virtue of the Minister's declaration of 11 November 2009, relating to the generation of electricity derived from renewable fuel sources, with a capacity to generate at least 30 megawatts, which was the subject of a project application lodged with Planning and Infrastructure (P&I), on the 18 November 2010, pursuant to Section 75E or 75M of the EP&A Act.

Figure 1.1



- Residential
- Industrial/commercial
- Urban other
- Landfill / sewage disposal
- Mining & quarrying
- Conservation area - regeneration
- Intensive animal production
- Special category

- Indicative site boundary
- Indicative solar plant boundary
- LGA boundary
- Residential receiver
- Receiver area
- Proposed transmission line easement
- Railway



GDA 1994 | MGA Zone 54



### 1.3 Aim and structure of this report

The Project Approval for the Broken Hill Solar Plant (MP10\_0202) encompasses two separate and specialist scopes of work:

- Solar plant works; and
- Connection works – principally being provided for TransGrid.

AGL has engaged two contractors to deliver the overall project. Each contractor will operate within a defined site area and is the Principal Contractor for its area of responsibility.

This staging report has been prepared to address Minister's Condition of Approval (MCoA) A6 of the approved Broken Hill Solar Plant project.

*The Proponent may elect to construct and/ or operate the Project in stages. Where staging is proposed, the Proponent shall submit a Staging Report to the Director-General and Crown Lands Division of the Department of Trade and Investment prior to the commencement of the first proposed stage. The Staging Report shall provide details of:*

- a) how the Project would be staged, including general details of work activities associated with each stage and the general timing of when each stage would commence; and*
- b) details of the relevant conditions of project approval, which would apply to each stage and how these shall be complied with across and between the stages of the Project.*

*Where staging of the Project is proposed, these conditions of approval are only required to be complied with at the relevant time and to the extent that they are relevant to the specific stage(s).*

*The Proponent shall ensure that an updated Staging Report (or advice that no changes to staging are proposed) is submitted to the Director-General and Crown Lands Division of the Department of Trade and Investment prior to the commencement of each stage, identifying any changes to the proposed staging or applicable conditions.*

This staging report:

- Details the work activities associated with each stage (Section 2); and
- Identifies the conditions of approval relevant to each stage, and details how they will be complied with (Section 3).



## 2. Proposed Stages

### 2.1 Prior to construction

Construction is defined in the Project Approval to:

*Include all work in respect of the Project other than:*

- a) Survey, acquisition, building/road dilapidation surveys;*
- b) Investigative drilling, excavation, or salvage;*
- c) Minor clearing or translocation of native vegetation;*
- d) Establishing ancillary facilities/construction work sites (in locations meeting the criteria identified in the conditions of approval;*
- e) Installation of environmental impact mitigation measures, fencing, enabling works; and*
- f) Other activities determined by the Environmental Representative to have minimal environmental impact (e.g. minor roads, minor adjustments to services/utilities, etc.)*

A number of pre-construction activities will occur on the site. Pre-construction activities will be progressed in accordance with the Project Approval. Pre-construction works undertaken in accordance with the above definition will be described as enabling works in this report.

### 2.2 Stages

Construction of the Broken Hill Solar Power Plant will take place in four stages. While the stages have periods where they overlap, they will progress independently of each other. Additionally, 'enabling works' have been termed 'Stage 0'.

The stages of construction are:

- Stage 0 Enabling works (pre-construction works) – refer to Section 2.1
- Stage 1 Solar plant construction
- Stage 2 Connection works construction
- Stage 3 Solar plant operation
- Stage 4 Connection works operation

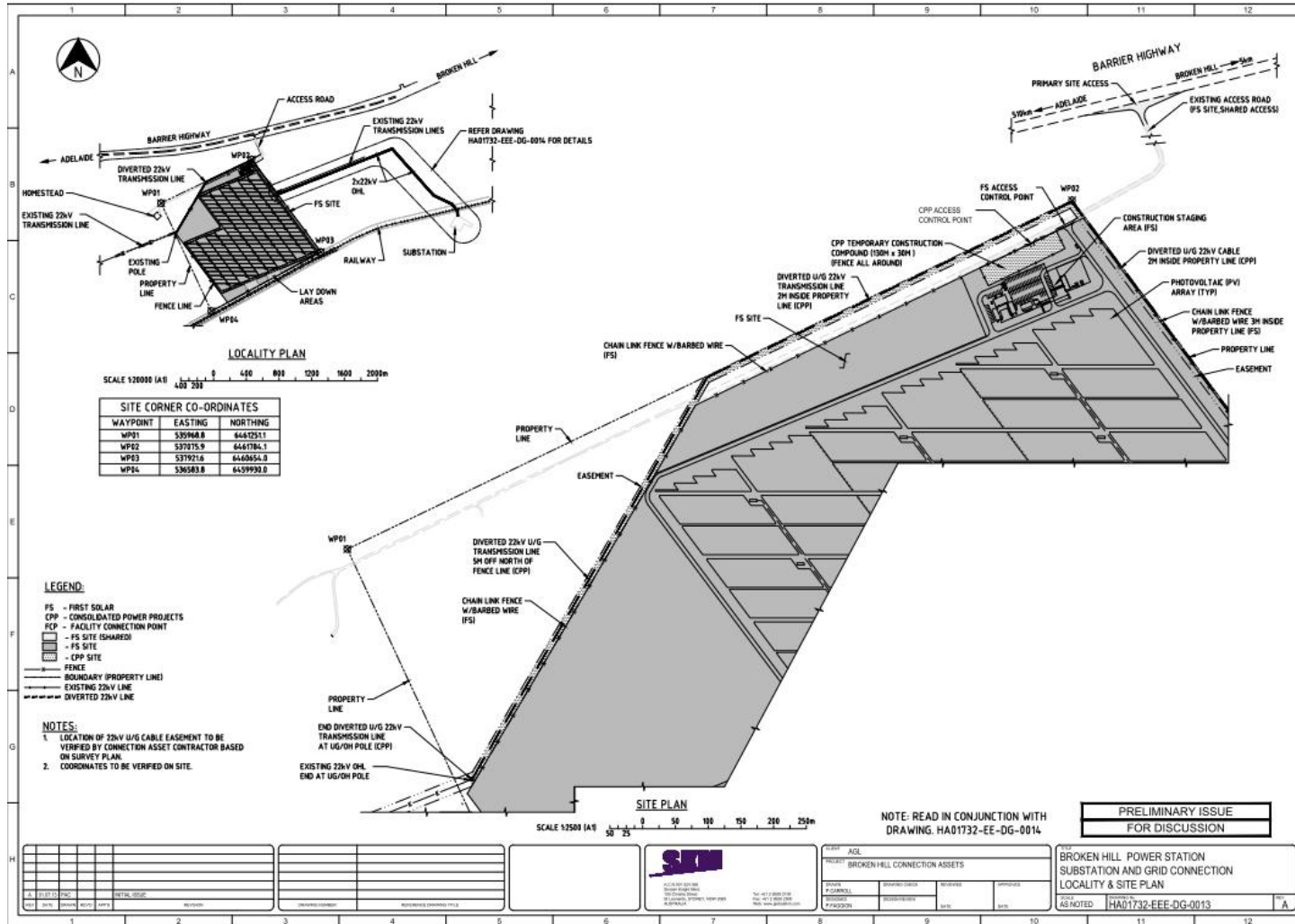
The activities to be completed in each stage and estimated stage timing are described below.

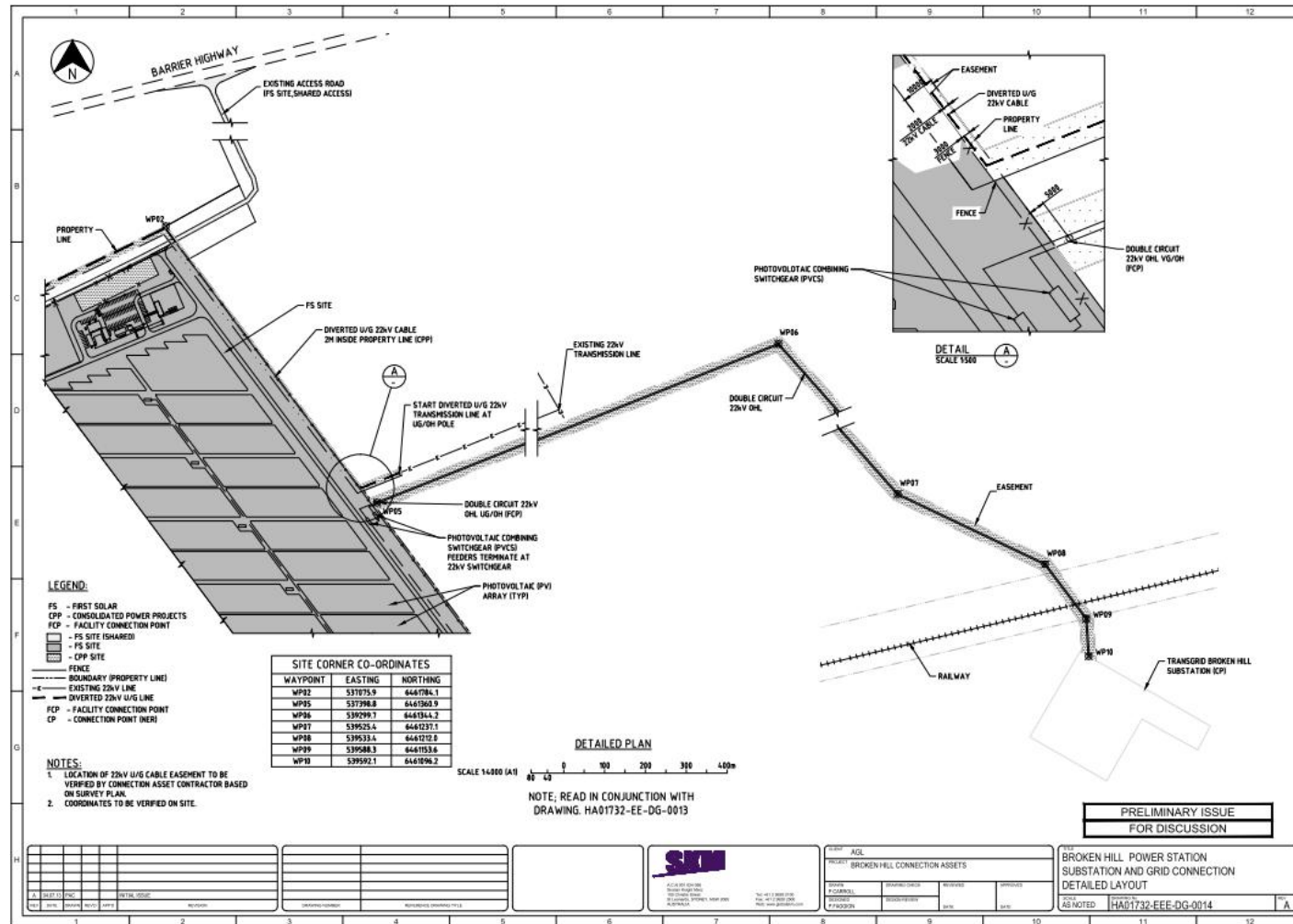
Enabling works (Stage 0) are planned to commence in July 2014. Connection Works are planned to commence in September 2014 and be completed in January 2015. Solar plant works are planned to commence following approval of their CEMP and to be completed by November 2015. The connection works will be handed over to TransGrid who will be responsible for their operation. Operation of the solar plant will be progressive from completion of each section. The table below provides more details about the stages of construction.



Table 2-1 Estimated stage timing and division of responsibilities

Stage	Details	Start	End	Responsibility
<b>Enabling works</b>				
<b>Stage 0</b> <b>Enabling works</b>	<p>These works will be completed prior to construction as per the definition of "construction" in the MCoA (Section 2.1). These enabling works will include a number of activities in accordance with the definition of "construction" in the MCoA as well as the following:</p> <ul style="list-style-type: none"> <li>Upgrade of the site access road intersection to the Barrier Highway;</li> <li>Diversion of the existing 22kV overhead power line; and</li> <li>Installation of the potable water supply and easement.</li> </ul>	July 2014	September 2014	Proponent / Solar Plant Contractor and Connection Works Contractor
<b>Construction</b>				
<b>Stage 1</b> <b>Solar plant construction</b>	<p>Construction of solar power station and associated infrastructure:</p> <ul style="list-style-type: none"> <li>Photovoltaic arrays incorporating rows of solar panels mounted on fixed steel frames and a series of central inverters and transformers</li> <li>Aboveground and underground electrical conduits and cabling to connect the arrays to the inverters and transformers</li> <li>Marshalling switchgear to collect the power from the PV arrays</li> <li>Associated internal access roads, fencing and landscaping</li> <li>Site office and maintenance office buildings</li> </ul> <p>Refer to dark grey shading on Figure 2-1 (FS Site), and additionally the light grey shading denoted "FS Site (Shared)" for the solar plant site boundary.</p>	CEMP approval	November 2 015	Solar Plant Contractor
<b>Stage 2</b> <b>Connection works construction</b>	<p>Construction of a double circuit 22kV overhead transmission line, to connect to the existing TransGrid Broken Hill substation</p> <p>Refer to the dotted grey hatched areas on Figures 2-1 and 2-2 and additionally the light grey shading denoted "FS Site (Shared)" for the connection works site boundary.</p>	September 2014	January 2015	Connection Works Contractor
<b>Operation</b>				
<b>Stage 3</b> <b>Solar plant operation</b>	<p>Operation of solar plant site (all infrastructure constructed in Stage 1). The solar plant will be progressively handed over in two sections.</p>	August 2015 to Nov2015	-	Solar Plant Operator
<b>Stage 4</b> <b>Connection works operation</b>	<p>Operation of connection works site (all infrastructure constructed in Stage 2).</p>	Jan 2015	-	Connection Works Operator (TransGrid)





### 3. Addressing Minister's Conditions of Approval

The Minister's Conditions of Approval for the Broken Hill Solar Power Plant consists of the Conditions of Approval, provided by the NSW Minister for Planning and Infrastructure (27 March 2013), and revised Statements of Commitment, provided within the Broken Hill Solar Plant Submissions and Preferred Project Report (February 2013).

As the project will be separated into four distinct stages, Table 3-1 makes clear the roles the parties (identified in Section 2) will have in addressing each Condition of Approval.

It is noted that whilst there is a clear division of labour and responsibilities with regard to the construction and operation of the solar plant, AGL will remain ultimately responsible for the satisfaction of the conditions of approval. Specifically:

- The project will have one Environmental Representative (ER) to satisfy MCoA C1. Among other duties, the ER will review and monitor the implementation of all sub-plans prepared by contractors, to ensure cohesiveness in approach where required and ultimately that the plans comply with the MCoA.
- The project will have several overarching plans/systems:
  - complaints management system
  - community information (consultation) plan
  - road dilapidation report
  - visual impact verification report
  - rehabilitation and revegetation guidelines
  - offset package, which takes into account the vegetation impacts off all stages
  - decommissioning management plan.

This will ensure a streamlined approach to these broader issues.

Where several sub-plans will be prepared, one for each stage, AGL will maintain responsibility for ensuring the plans take into account any relevant interdependencies (for example the cumulative effects of construction activities).

Table 3-1 Project approval requirements for each stage and nominated party.

ID	Requirement	AGL Proponent	Stage 0 Enabling works	Stage 1 Solar plant construction	Stage 2 Connection works construction	Stage 3 Solar plant operation	Stage 4 Transmission line maintenance and operation
			Proponent and Contractors	Solar Plant Contractor	Connection Works Contractor	Solar Plant Operator	Connection Works Operator
<b>Condition of Approval</b>							
<b>PART A - ADMINISTRATIVE CONDITIONS</b>							
<b>Obligation to Minimise Harm to the Environment</b>							
A1.	The Proponent shall implement all reasonable and feasible measures to prevent and/or minimise any harm to the environment that may results from the construction, operation or decommissioning of the Project.	Maintains ultimate responsibility for condition being met.	Applicable	Applicable	Applicable	Applicable	Applicable
<b>Terms of approval</b>							
A2.	The Proponent shall carry out the project generally in accordance with the: a) Major Projects Application 10_0202; b) Broken Hill Solar Plant Environmental Assessment prepared by Sinclair Knight Merz dated October 2012; c) Broken Hill Solar Plant Submissions and Preferred Project Report prepared by Sinclair Knight Merz dated February 2013; and d) conditions of this approval.	Maintains ultimate responsibility for condition being met.	Applicable	Applicable	Applicable	Applicable	Applicable
A3.	If there is any inconsistency between the plans and documentation referred to above, the most recent document shall prevail to the extent of the inconsistency. However, conditions of this approval prevail to the extent of any inconsistency.	Maintains ultimate responsibility for condition being met.	Applicable	Applicable	Applicable	Applicable	Applicable

ID	Requirement	AGL Proponent	Stage 0 Enabling works	Stage 1 Solar plant construction	Stage 2 Connection works construction	Stage 3 Solar plant operation	Stage 4 Transmission line maintenance and operation
			Proponent and Contractors	Solar Plant Contractor	Connection Works Contractor	Solar Plant Operator	Connection Works Operator
A4.	The Proponent shall comply with any reasonable requirement(s) of the Director-General arising from the Department's assessment of: a) any reports, plans or correspondence that are submitted in accordance with this approval; and b) the implementation of any actions or measures contained within these documents.	Maintains ultimate responsibility for condition being met.	Applicable	Applicable	Applicable	Applicable	Applicable
	<b>Limits of Approval</b>						
A5.	This project approval shall lapse five years after the date on which it is granted, unless any works the subject of this approval have physically commenced before that time.	Maintains ultimate responsibility for condition being met.					
	<b>Staging</b>						
A6.	The Proponent may elect to construct and/ or operate the Project in stages. Where staging is proposed, the Proponent shall submit a Staging Report to the Director-General and Crown Lands Division of the Department of Trade and Investment prior to the commencement of the first proposed stage. The Staging Report shall provide details of: e) how the Project would be staged, including general details of work activities associated with each stage and the general timing of when each stage would commence; and f) details of the relevant conditions of project approval, which	This condition is met by the development of this Staging Plan, once submitted to the Director General					

ID	Requirement	AGL Proponent	Stage 0 Enabling works	Stage 1 Solar plant construction	Stage 2 Connection works construction	Stage 3 Solar plant operation	Stage 4 Transmission line maintenance and operation
			Proponent and Contractors	Solar Plant Contractor	Connection Works Contractor	Solar Plant Operator	Connection Works Operator
	<p>would apply to each stage and how these shall be complied with across and between the stages of the Project.</p> <p>Where staging of the Project is proposed, these conditions of approval are only required to be complied with at the relevant time and to the extent that they are relevant to the specific stage(s).</p> <p>The Proponent shall ensure that an updated Staging Report (or advice that no changes to staging are proposed) is submitted to the Director-General Crown Lands Division of the Department of Trade and Investment prior to the commencement of each stage, identifying any changes to the proposed staging or applicable conditions.</p>						
	<b>Structural Adequacy</b>						
A7.	The Proponent shall ensure that all new buildings and structures, and any alterations or additions to existing buildings and structures, are constructed in accordance with the relevant requirements of the BCA. For the purpose of section 75S(2)(b) of the Act, the relevant provisions, as defined in section 75S(1A) of the Act apply to this approval.	Maintains ultimate responsibility for condition being met	Applicable	Applicable	Applicable		
	<b>Decommissioning</b>						
A8.	Within one year of decommissioning, the site shall be returned, as far as practicable, to its condition prior to the commencement of construction in consultation with the Crown Lands Division of the Department of Trade and Investment or	Maintains ultimate responsibility for condition				Applicable	



ID	Requirement	AGL Proponent	Stage 0 Enabling works	Stage 1 Solar plant construction	Stage 2 Connection works construction	Stage 3 Solar plant operation	Stage 4 Transmission line maintenance and operation
			Proponent and Contractors	Solar Plant Contractor	Connection Works Contractor	Solar Plant Operator	Connection Works Operator
	<p>any relevant landowners. All solar panels and associated above ground structures including but not necessarily limited to, the control and facilities building and electrical infrastructure, including underground infrastructure to a depth of 300 millimetres, shall be removed from the site unless otherwise agreed by the Director-General in consultation with Crown Lands Division of the Department of Trade and Investment, except where the, control room or overhead electricity lines are transferred to or in the control of the local electricity network operator. All other elements associated with the project, including site roads, shall be removed unless otherwise agreed to by the Director-General.</p>	being met					
A9.	<p>If the solar plant is not used for the generation of electricity for a continuous period of 12 months, it shall be decommissioned by the Proponent, unless otherwise agreed by the Director-General and the Crown Lands Division of the Department of Trade and Investment. The Proponent shall keep independently-verified annual records of the use of the solar panels for electricity generation. Copies of these records shall be provided to the Director-General upon request. The solar panels and any associated infrastructure are to be dismantled and removed from the site by the Proponent within 18 months from the date that the solar panels were last used to generate electricity.</p>	Maintains ultimate responsibility for condition being met				Applicable	

ID	Requirement	AGL Proponent	Stage 0 Enabling works	Stage 1 Solar plant construction	Stage 2 Connection works construction	Stage 3 Solar plant operation	Stage 4 Transmission line maintenance and operation
			Proponent and Contractors	Solar Plant Contractor	Connection Works Contractor	Solar Plant Operator	Connection Works Operator
A11	Prior to the commencement of construction, the Proponent shall provide written evidence to the satisfaction of the Director-General that the lease agreements with the Crown Lands Division of the Department of Trade and Investment have adequate provisions to require that decommissioning occurs in accordance with this approval, and is the responsibility of the Proponent.	Maintains ultimate responsibility for condition being met.		Applicable	Applicable		
	<b>Compliance</b>						
A12	The Proponent shall ensure that employees, contractors and sub-contractors are aware of, and comply with, the conditions of this approval relevant to their respective activities.	Maintains ultimate responsibility for condition being met	Applicable	Applicable	Applicable	Applicable	Applicable
A13	The Proponent shall be responsible for environmental impacts resulting from the actions of all persons that it invites onto the site, including contractors, sub-contractors and visitors.	Maintains ultimate responsibility for condition being met	Applicable	Applicable	Applicable	Applicable	Applicable
A14	In the event of a dispute between the Proponent and a public authority, in relation to an applicable requirement in this approval or relevant matter relating to the project, either party may refer the matter to the Director-General for resolution. The Director-General's determination of any such dispute shall be final and binding on the parties.	Noted	Applicable	Applicable	Applicable	Applicable	Applicable

ID	Requirement	AGL Proponent	Stage 0 Enabling works	Stage 1 Solar plant construction	Stage 2 Connection works construction	Stage 3 Solar plant operation	Stage 4 Transmission line maintenance and operation
			Proponent and Contractors	Solar Plant Contractor	Connection Works Contractor	Solar Plant Operator	Connection Works Operator
	<b>PART B - ENVIRONMENTAL PERFORMANCE</b>						
	<b>GENERAL CONDITIONS</b>						
	<b>Ancillary Facilities</b>						
B1.	<p>B1. Unless otherwise approved by the Director-General, the location of Ancillary Facilities shall:</p> <ul style="list-style-type: none"> <li>a) be located more than 50 metres from a waterway;</li> <li>b) be located within or adjacent to the Site;</li> <li>c) have ready access to the road network;</li> <li>d) be located to minimise the need for heavy vehicles to travel through residential areas;</li> <li>e) be sited on relatively level land;</li> <li>f) be separated from nearest residences by at least 200 metres (or at least 300 metres for a temporary batching plant);</li> <li>g) not require vegetation clearing beyond that already required by the Project;</li> <li>h) not impact on heritage sites (including areas of archaeological sensitivity) beyond those already impacted by the Project;</li> <li>i) not unreasonably affect the land use of adjacent properties;</li> <li>j) be above the 20 ARI flood level unless a contingency plan to manage flooding is prepared and implemented; and</li> <li>k) provide sufficient area for the storage of raw materials to minimise, to the greatest extent practical, the number of deliveries required outside standard construction hours.</li> </ul> <p>The location of the Ancillary Facilities shall be identified in the CEMP.</p>	<p>Maintains ultimate responsibility for condition being met</p> <p>(Ancillary facilities are not considered construction under the definition of construction in the MCoA, in locations meeting the criteria in this condition)</p>	Applicable	Applicable	Applicable		
B2.	The site of all ancillary facilities shall be rehabilitated to at least	Maintains		Applicable	Applicable		

ID	Requirement	AGL Proponent	Stage 0 Enabling works	Stage 1 Solar plant construction	Stage 2 Connection works construction	Stage 3 Solar plant operation	Stage 4 Transmission line maintenance and operation
			Proponent and Contractors	Solar Plant Contractor	Connection Works Contractor	Solar Plant Operator	Connection Works Operator
	their pre-construction condition, unless otherwise agreed by the Crown Lands Division of the Department of Trade and Investment.	ultimate responsibility for condition being met					
	<b>Bushfire Risk</b>						
B3.	The Proponent shall ensure that all project components on site are designed, constructed and operated to minimise ignition risks, provide for asset protection consistent with relevant NSW Rural Fire Services (RFS) design guidelines (Planning for Bushfire Protection 2006 and Standards for Asset Protection, Undated) and provide for necessary emergency management including appropriate fire-fighting equipment and water supplies on site to respond to a bush fire.	Bushfire risk and consultation will be managed through the implementation of Bush Fire Management Plans (BFMPs). Maintains ultimate responsibility for condition being met.	Environmental risk management documentation specific to the enabling works will be developed if required.	A sub-plan will be developed specific to this stage	A sub-plan will be developed specific to this stage	A sub-plan will be developed specific to this stage	A sub-plan will be developed specific to this stage
B4.	Throughout the operational life of the project, the Proponent shall regularly consult with the local RFS to ensure its familiarity with the project, including the construction timetable and the final location of all infrastructures on the site. The Proponent shall comply with any reasonable request of the local RFS to	Maintains ultimate responsibility for condition being met				Applicable	Applicable

ID	Requirement	AGL Proponent	Stage 0 Enabling works	Stage 1 Solar plant construction	Stage 2 Connection works construction	Stage 3 Solar plant operation	Stage 4 Transmission line maintenance and operation
			Proponent and Contractors	Solar Plant Contractor	Connection Works Contractor	Solar Plant Operator	Connection Works Operator
	reduce the risk of bushfire and to enable fast access in emergencies.						
	<b>Dangerous Goods</b>						
B5.	<p>Dangerous goods, as defined by the Australian Dangerous Goods Code, shall be stored and handled strictly in accordance with:</p> <ul style="list-style-type: none"> <li>a) all relevant Australian Standards;</li> <li>b) for liquids, a minimum bund volume requirement of 110% of the volume of the largest single stored volume within the bund; and</li> <li>c) the <i>Environment Protection Manual for Authorised Officers: Bunding and Spill Management, technical bulletin</i> (Environment Protection Authority, 1997).</li> </ul> <p>In the event of an inconsistency between the requirements listed from a) to c) above, the most stringent requirement shall prevail to the extent of the inconsistency.</p>	Maintains ultimate responsibility for condition being met	Applicable	Applicable	Applicable	Applicable	Applicable
	<b>Dust Generation</b>						
B6.	<p>The Proponent shall construct and operate the project in a manner that minimises dust generation from the site, including wind-blown and traffic-generated dust as far as practicable.</p> <p>All project related activities on the site shall be undertaken with the objective of preventing visible emissions of dust from the site. Should visible dust emissions attributable to the project</p>	Maintains ultimate responsibility for condition being met	Applicable	Applicable	Applicable	Applicable	Applicable

ID	Requirement	AGL Proponent	Stage 0 Enabling works	Stage 1 Solar plant construction	Stage 2 Connection works construction	Stage 3 Solar plant operation	Stage 4 Transmission line maintenance and operation
			Proponent and Contractors	Solar Plant Contractor	Connection Works Contractor	Solar Plant Operator	Connection Works Operator
	occur during construction and operation, the Proponent shall identify and implement all practicable dust mitigation measures, including cessation of relevant works during construction, planting ground covers, using dust suppressants as appropriate, such that emissions of visible dust cease.						
	<b>Water Quality Impact</b>						
B7.	Except as may be expressly provided by an Environment Protection Licence for the project, the Proponent shall comply with section 120 of the <i>Protection of the Environment Operations Act 1997</i> which prohibits the pollution of waters.	Maintains ultimate responsibility for condition being met	Applicable	Applicable	Applicable	Applicable	Applicable
B8.	Works within 40m of a watercourse are to be carried out in accordance with the <i>Guidelines for Controlled Activities on Waterfront Land</i> (NOW, July 2012).	Guidelines for Controlled Activities on Waterfront Land will be included in the site specific erosion and sediment control plans.  AGL maintains ultimate	Applicable	Applicable	Applicable		

ID	Requirement	AGL Proponent	Stage 0 Enabling works	Stage 1 Solar plant construction	Stage 2 Connection works construction	Stage 3 Solar plant operation	Stage 4 Transmission line maintenance and operation
			Proponent and Contractors	Solar Plant Contractor	Connection Works Contractor	Solar Plant Operator	Connection Works Operator
		responsibility for condition being met					
	<b>Construction Soil and Water Management</b>						
B9.	Soil and water management measures consistent with Managing Urban Stormwater - Soils and Construction Vol. 1 (Landcom, 2004) shall be employed during the construction of the Project to minimise soil erosion and the discharge of sediment and other pollutants to land and/or waters.	Maintains ultimate responsibility for condition being met	Applicable	Applicable	Applicable		
	<b>Waterways</b>						
B10.	Waterway crossings shall be designed and constructed in consultation with NOW and DPI (Fisheries) and consistent with DPI (Fisheries) guidelines <i>Policy and Guidelines for Fish Friendly Waterway Crossings</i> (2004) and <i>Fish Passage Requirements for Waterway Crossings</i> (2004).	Waterway crossings will be included in site specific erosion and sediment control plans. AGL maintains responsibility for condition being met.	Applicable	Applicable	Applicable		
	<b>Waste Management</b>						
B11.	All waste materials removed from the site shall only be directed to a waste management facility or premises lawfully permitted	Maintains ultimate	Applicable	Applicable	Applicable	Applicable	Applicable



ID	Requirement	AGL Proponent	Stage 0 Enabling works	Stage 1 Solar plant construction	Stage 2 Connection works construction	Stage 3 Solar plant operation	Stage 4 Transmission line maintenance and operation
			Proponent and Contractors	Solar Plant Contractor	Connection Works Contractor	Solar Plant Operator	Connection Works Operator
	to accept the materials.	responsibility for condition being met					
B12.	Waste generated outside the site shall not be received at the site for storage, treatment, processing, reprocessing, or disposal on the site, except as expressly permitted by a licence under the <i>Protection of the Environment Operations Act 1997</i> , if such a licence is required in relation to that waste.	Maintains ultimate responsibility for condition being met	Applicable	Applicable	Applicable	Applicable	Applicable
B13.	All liquid and/or non-liquid waste generated on the site shall be assessed and classified in accordance with <i>Waste Classification Guidelines</i> (Department of Environment, Climate Change and Water, 2009), or any superseding document.	Maintains ultimate responsibility for condition being met	Applicable	Applicable	Applicable	Applicable	Applicable
	<b>Utilities and Services</b>						
B14.	Utilities, services and other infrastructure potentially affected by construction and operation shall be identified prior to construction to determine requirements for access to, diversion, protection, and/or support. Consultation with the relevant owner and/or provider of services that are likely to be affected by the Project shall be undertaken to make suitable arrangements for access to, diversion, protection, and/or support of the affected infrastructure as required. The cost of any such arrangements shall be borne by the Proponent.	Maintains ultimate responsibility for condition being met	Applicable	Applicable	Applicable		
	<b>FLORA &amp; FAUNA</b>						

ID	Requirement	AGL Proponent	Stage 0 Enabling works	Stage 1 Solar plant construction	Stage 2 Connection works construction	Stage 3 Solar plant operation	Stage 4 Transmission line maintenance and operation
			Proponent and Contractors	Solar Plant Contractor	Connection Works Contractor	Solar Plant Operator	Connection Works Operator
	<b>Native Vegetation Impacts</b>						
B15.	The clearing of all native vegetation is to be limited to the minimal extent practicably required. Details regarding the procedures for clearing vegetation and minimising the extent of clearing shall be clearly included in the Flora and Fauna Management Plan contained in condition C3(a).	Maintains ultimate responsibility for condition being met	Environmental risk management documentation specific to the enabling works will be developed if required.	A sub-plan will be developed specific to this stage	A sub-plan will be developed specific to this stage		
B16.	Tree trunks and major branches from cleared trees should be used, to the fullest extent practicable, to enhance habitat (coarse woody debris) in rehabilitated areas (either in offset areas or areas adjoining impacted areas) and included in the Construction Flora and Fauna Management Plan contained in condition C3(a).	Maintains ultimate responsibility for condition being met	Environmental risk management documentation specific to the enabling works will be developed if required.	A sub-plan will be developed specific to this stage	A sub-plan will be developed specific to this stage		
	<b>Fauna Impacts</b>						
B17.	The Applicant shall design, construct and operate any overhead transmission line connection to the electricity grid with consideration to reasonable and feasible mitigation measures that can be employed to minimise the risk of bird and bat strike into electricity wires.	Maintains ultimate responsibility for condition being met			Applicable		Applicable
B18.	Prior to construction the Proponent shall prepare, in consultation with a suitably qualified expert, and implement a management plan for the raptor nesting site described in Figure	Maintains ultimate responsibility		Applicable	Applicable	Potentially applicable. Dependant on	Potentially applicable. Dependant on

ID	Requirement	AGL Proponent	Stage 0 Enabling works	Stage 1 Solar plant construction	Stage 2 Connection works construction	Stage 3 Solar plant operation	Stage 4 Transmission line maintenance and operation
			Proponent and Contractors	Solar Plant Contractor	Connection Works Contractor	Solar Plant Operator	Connection Works Operator
	<p>7-3 of the Environmental Assessment. This plan shall include, but not be limited to:</p> <ul style="list-style-type: none"> <li>a) an assessment of the foraging, breeding and habitat available to the raptor populations, including a map of the suitable breeding, roosting and foraging habitat on the project site;</li> <li>b) identified protection measures for this habitat;</li> <li>c) a protocol for checking available breeding habitat prior to any construction works being undertaken, with suitable protection measures implemented if nests are identified;</li> <li>d) identified measures to minimise impact and disturbance to the raptors during construction and operation;</li> <li>e) a monitoring program to assess and respond to impacts on the local raptor populations by construction and operations on the project site; and</li> <li>f) if monitoring results demonstrate the nest has been abandoned then further mitigation, such as a provision of an artificial structure to allow a new nest to be built in the offset area should be investigated.</li> </ul> <p>A copy of the Plan shall be provided to the Department and the OEH prior to the commencement of construction.</p>	for condition being met				monitoring requirements of the Plan.	monitoring requirements of the Plan.
B19.	During construction, the Proponent shall maintain a buffer of 500 metres in all directions from the raptor nesting site	Maintains ultimate	Applicable	Applicable	Applicable		

ID	Requirement	AGL Proponent	Stage 0 Enabling works	Stage 1 Solar plant construction	Stage 2 Connection works construction	Stage 3 Solar plant operation	Stage 4 Transmission line maintenance and operation
			Proponent and Contractors	Solar Plant Contractor	Connection Works Contractor	Solar Plant Operator	Connection Works Operator
	described in Figure 7-3 of the Environmental Assessment unless otherwise agreed to by the Director-General.	responsibility for condition being met					
	<b>VISUAL AMENITY</b>						
	<b>Landscaping Requirements</b>						
B20.	Within six months of the commissioning of the project, the Proponent shall prepare and submit a Visual Impact Verification Report for the Director-General's approval. Unless otherwise agreed to by the Director-General, the Visual Impact Verification Report shall confirm the visual impacts at each of the receptors and roadways identified in the Environmental Assessment as having the potential to be 'highly impacted', considering the final model and layout of generating components on site as well as site specific mitigating factors at the receptors and roadways (such as receptor orientation and intervening screening factors). The Visual Impact Verification Report shall identify all reasonable and feasible screening and landscape planting options available at each receptor and roadways at which potential impacts have been verified to be 'high' including demonstration that these measures have been determined in consultation with affected receptors and relevant road authorities.	Maintains responsibility for preparing a single report to satisfy this condition					
B21.	Within 18 months of the approval of the Visual Impact Verification Report by the Director-General (or as otherwise	Maintains ultimate					

ID	Requirement	AGL Proponent	Stage 0 Enabling works	Stage 1 Solar plant construction	Stage 2 Connection works construction	Stage 3 Solar plant operation	Stage 4 Transmission line maintenance and operation
			Proponent and Contractors	Solar Plant Contractor	Connection Works Contractor	Solar Plant Operator	Connection Works Operator
	agreed to by the Director-General), the Proponent shall ensure that the measures identified in the Report are implemented at affected receptors and roadways as identified in the Report in consultation with the Crown Lands Division of the Department of Trade and Investment, other relevant residents/landowners and road authorities.	responsibility for condition being met					
B22.	The Proponent shall ensure that any permanent buildings and overhead transmission lines are designed and constructed to minimise visual intrusion to nearest sensitive receptors as far as reasonable and feasible, including appropriate external finishes and landscape planting to screen views.	Maintains ultimate responsibility for condition being met		Applicable	Applicable		
<b>Rehabilitation and Revegetation</b>							
B23.	The Proponent shall implement a revegetation and rehabilitation program for all areas of the project footprint which are disturbed during the construction of the project but which are not required for the ongoing operation of the project including temporary construction facility sites and sections of construction access roads. The Proponent shall ensure that all revegetation measures are implemented progressively where possible and in all cases within six months of the cessation of construction activities at the relevant area. Unless otherwise agreed to by the Director-General, the Proponent shall monitor and maintain the health of all revegetated areas until such time that the plantings have been verified by an independent and	Maintains ultimate responsibility for condition being met	A sub-plan will be developed specific to this stage	A sub-plan will be developed specific to this stage	A sub-plan will be developed specific to this stage	Potentially applicable if plantings are requiring ongoing maintenance prior to being verified by an independent expert.	Potentially applicable if plantings are requiring ongoing maintenance prior to being verified by an independent expert.

ID	Requirement	AGL Proponent	Stage 0 Enabling works	Stage 1 Solar plant construction	Stage 2 Connection works construction	Stage 3 Solar plant operation	Stage 4 Transmission line maintenance and operation
			Proponent and Contractors	Solar Plant Contractor	Connection Works Contractor	Solar Plant Operator	Connection Works Operator
	suitably qualified expert (whose appointment has been agreed to by the Director-General) as being well established, in good health and self-sustaining.						
	<b>NOISE - CONSTRUCTION</b>						
	<b>Construction Noise</b>						
B24.	Construction activities associated with the project shall be undertaken during the following standard construction hours: a) 7:00am to 6:00pm Mondays to Fridays, inclusive; b) 8:00am to 1:00pm Saturdays; and c) at no time on Sundays or public holidays. Except unless otherwise provided in condition B25.	Maintains ultimate responsibility for condition being met	Applicable	Applicable	Applicable		
B25.	Construction works outside of the standard construction hours identified in condition B24 may be undertaken in the following circumstances: a) construction works that generate noise that is: i. no more than 5 dB(A) above rating background level at any residence in accordance with <i>the Interim Construction Noise Guideline</i> (Department of Environment and Climate Change, 2009); and ii. no more than the noise management levels specified in Table 3 of the <i>Interim Construction Noise Guideline</i> (Department of Environment and Climate Change, 2009) at other sensitive receivers; or b) for the delivery of materials required outside those hours by	Maintains ultimate responsibility for condition being met	Environmental risk management documentation specific to the enabling works will be developed if required.	A sub-plan will be developed specific to this stage	A sub-plan will be developed specific to this stage		

ID	Requirement	AGL Proponent	Stage 0 Enabling works	Stage 1 Solar plant construction	Stage 2 Connection works construction	Stage 3 Solar plant operation	Stage 4 Transmission line maintenance and operation
			Proponent and Contractors	Solar Plant Contractor	Connection Works Contractor	Solar Plant Operator	Connection Works Operator
	<p>the NSW Police Force or other authorities for safety reasons; or</p> <p>c) where it is required in an emergency to avoid the loss of life, property and/or to prevent environmental harm;</p> <p>d) works as approved through the out-of-hours work protocol outlined in the Construction Noise Management Plan required under condition C3(d).</p>						
B26.	<p>Any activities resulting in impulsive or tonal noise emission (such as rock breaking, rock hammering, pile driving) shall only be undertaken:</p> <p>a) between the hours of 8:00 am to 5:00 pm Mondays to Fridays;</p> <p>b) between the hours of 8:00 am to 1:00 pm Saturdays; and</p> <p>c) in continuous blocks not exceeding three hours each with a minimum respite from those activities and works of not less than one hour between each block.</p> <p>For the purposes of this condition, 'continuous' includes any period during which there is less than a one hour respite between ceasing and recommencing any of the work the subject of this condition.</p>	Maintains ultimate responsibility for condition being met	Environmental risk management documentation specific to the enabling works will be developed if required.	A sub-plan will be developed specific to this stage	A sub-plan will be developed specific to this stage		
B27.	The Proponent shall implement all reasonable and feasible measures to minimise noise generation from the construction of the Project consistent with the requirements of the <i>Interim Construction Noise Guideline</i> (DECC, July 2009) including	Maintains ultimate responsibility for condition	Environmental risk management documentation specific to the enabling works	A sub-plan will be developed specific to this	A sub-plan will be developed specific to this		



ID	Requirement	AGL Proponent	Stage 0 Enabling works	Stage 1 Solar plant construction	Stage 2 Connection works construction	Stage 3 Solar plant operation	Stage 4 Transmission line maintenance and operation
			Proponent and Contractors	Solar Plant Contractor	Connection Works Contractor	Solar Plant Operator	Connection Works Operator
	noise generated by heavy vehicle haulage and other construction traffic associated with the project	being met	will be developed if required.	stage	stage		
	<b>NOISE - OPERATION</b>						
	<b>Operational Noise Criteria</b>						
B28.	The Proponent shall take all reasonable measures to minimise noise emissions and vibration from all plant and equipment operated on the site such that they do not exceed noise and vibration criteria derived by application of the <i>NSW Industrial Noise Policy</i> (DECC, 2000) and <i>Assessing Vibration: A Technical Guideline</i> (DECC, 2006).	Maintains ultimate responsibility for condition being met				A sub-plan will be developed specific to this stage	A sub-plan will be developed specific to this stage
	<b>Operational Noise Design Standards – Overhead Transmission Line</b>						
B29.	The Proponent shall ensure that any overhead transmission line associated with the project is designed, constructed and operated to minimise the generation of corona and aeolian noise as far as reasonable and feasible at nearest existing sensitive receptors.	Maintains ultimate responsibility for condition being met			A sub-plan will be developed specific to this stage		A sub-plan will be developed specific to this stage
	<b>TRAFFIC AND TRANSPORT</b>						
	<b>Road Dilapidation</b>						
B30.	Unless otherwise agreed by the Director-General, the Proponent shall commission an independent, qualified person or team to undertake the following in consultation with the	Maintains ultimate responsibility		Applicable	Applicable		

ID	Requirement	AGL Proponent	Stage 0 Enabling works	Stage 1 Solar plant construction	Stage 2 Connection works construction	Stage 3 Solar plant operation	Stage 4 Transmission line maintenance and operation
			Proponent and Contractors	Solar Plant Contractor	Connection Works Contractor	Solar Plant Operator	Connection Works Operator
	<p>relevant road authority:</p> <p>a) Prior to the commencement of construction of the project, the Proponent shall commission a suitably qualified road infrastructure specialist to assess the condition of all local public roads proposed to be traversed by construction traffic associated with the project (including over-mass or over-dimensional vehicles) in consultation with the relevant road authority, and to identify any upgrade requirements to accommodate project traffic for the duration of construction (including culvert, bridge and drainage design; intersection treatments; vehicle turning requirements; and site access), having regard to traffic volumes. The <b>Pre-Construction Road Report</b> shall be submitted to the Director- General prior to the commencement of construction works, clearly identifying recommendations made by the relevant road authority and how these have been addressed. The Proponent shall ensure that all upgrade measures identified in the report are implemented to meet the reasonable requirements of the relevant road authority, prior to the commencement of construction;</p> <p>b) upon determining the haulage route(s) for construction vehicles associated with the project, and prior to construction, an independent and qualified person or team shall undertake a <b>Road Dilapidation Report</b>. The report shall assess the current condition of relevant local road(s)</p>	<p>for condition being met</p>					

ID	Requirement	AGL Proponent	Stage 0 Enabling works	Stage 1 Solar plant construction	Stage 2 Connection works construction	Stage 3 Solar plant operation	Stage 4 Transmission line maintenance and operation
			Proponent and Contractors	Solar Plant Contractor	Connection Works Contractor	Solar Plant Operator	Connection Works Operator
	<p>and describe mechanisms to restore any damage that may result due to traffic and transport related to the construction of the project. The Report shall be submitted to the relevant road authority for review prior to the commencement of haulage;</p> <p>c) following completion of construction, a subsequent report shall be prepared to assess any damage that may have resulted from the construction of the project; and</p> <p>d) measures undertaken to restore or reinstate roads affected by the project shall be undertaken in a timely manner, in accordance with the reasonable requirements of the relevant road authority, and at the full expense of the Proponent.</p>						
B31.	The intersection of the site access road and the Barrier Highway shall be upgraded prior to the commencement of construction to the satisfaction of and at no cost to the relevant road authority.	Maintains ultimate responsibility for condition being met	Applicable				
	<b>HERITAGE</b>						
	<b>Heritage Impacts</b>						
B32.	If during the course of construction the Proponent becomes aware of any previously unidentified Aboriginal object(s), all work likely to affect the object(s) shall cease immediately and the OEH informed in accordance with the <i>National Parks and</i>	Maintains ultimate responsibility for condition	Applicable	Applicable	Applicable		

ID	Requirement	AGL Proponent	Stage 0 Enabling works	Stage 1 Solar plant construction	Stage 2 Connection works construction	Stage 3 Solar plant operation	Stage 4 Transmission line maintenance and operation
			Proponent and Contractors	Solar Plant Contractor	Connection Works Contractor	Solar Plant Operator	Connection Works Operator
	<i>Wildlife Act 1974.</i> In addition, registered Aboriginal stakeholders shall be informed of the finds. Works shall not recommence until an appropriate strategy for managing the objects has been determined in consultation with the OEH and the registered Aboriginal stakeholders and written authorisation from the OEH is received by the Proponent.	being met					
B33.	If during the course of construction the Proponent becomes aware of any unexpected historical relic(s), all work likely to affect the relic(s) shall cease immediately and the Heritage Office notified in accordance with the <i>Heritage Act 1977</i> . Works shall not recommence until the Proponent receives written authorisation from the Heritage Office.	Maintains ultimate responsibility for condition being met	Applicable	Applicable	Applicable		
<b>PART B - ENVIRONMENTAL MANAGEMENT, REPORTING AND AUDITING</b>							
<b>ENVIRONMENTAL REPRESENTATIVE</b>							
C1.	Prior to the commencement of construction of the Project, or as otherwise agreed by the Director-General, the Proponent shall nominate for the approval of the Director-General a suitably qualified and experienced Environment Representative(s) that is independent of the design and construction personnel. The Proponent shall employ the Environment Representative(s) for the duration of construction, or as otherwise agreed by the Director-General. The Environment Representative(s) shall: a) be the principal point of advice in relation to the	One ER will be appointed to the project to satisfy this condition as well as provide coordination between the stages, in terms					

ID	Requirement	AGL Proponent	Stage 0 Enabling works	Stage 1 Solar plant construction	Stage 2 Connection works construction	Stage 3 Solar plant operation	Stage 4 Transmission line maintenance and operation
			Proponent and Contractors	Solar Plant Contractor	Connection Works Contractor	Solar Plant Operator	Connection Works Operator
	environmental performance of the Project; b) monitor the implementation of environmental management plans and monitoring programs required under this approval and advise the Proponent upon the achievement of these plans/ programs; c) have responsibility for considering and advising the Proponent on matters specified in the conditions of this approval, and other licences and approvals related to the environmental performance and impacts of the Project; d) ensure that environmental auditing is undertaken in accordance with the Proponent’s Environmental Management System(s); e) be given the authority to approve/ reject minor amendments to the Construction Environmental Management Plan. What constitutes a “minor” amendment shall be clearly explained in the Construction Environmental Management Plan required under Condition C2; f) be given the authority and independence to require reasonable steps be taken to avoid or minimise unintended or adverse environmental impacts, and failing the effectiveness of such steps, to direct that relevant actions be ceased immediately should an adverse impact on the environment be likely to occur; and g) be consulted in responding to the community concerning	of compliance.					

ID	Requirement	AGL Proponent	Stage 0 Enabling works	Stage 1 Solar plant construction	Stage 2 Connection works construction	Stage 3 Solar plant operation	Stage 4 Transmission line maintenance and operation
			Proponent and Contractors	Solar Plant Contractor	Connection Works Contractor	Solar Plant Operator	Connection Works Operator
	the environmental performance of the project where the resolution of points of conflict between the Applicant and the community is required.						
	<b>ENVIRONMENTAL MANAGEMENT</b>						
	<b>Construction Environmental Management Plan (CEMP)</b>						
C2.	<p>The Proponent shall prepare and implement a Construction Environmental Management Plan in consultation with Council and the Crown Lands Division of the Department of Trade and Investment in accordance with the <i>Guideline for the Preparation of Environmental Management Plans</i> (Department of Infrastructure, Planning and Natural Resources, 2004) or any replacement guideline. No construction associated with the project shall commence until written approval of this plan has been received from the Director-General or his nominee. The Plan must include:</p> <ul style="list-style-type: none"> <li>a) a description of all relevant activities to be undertaken on the site during construction including an indication of stages of construction, where relevant;</li> <li>b) identification of the potential for cumulative impacts with other construction activities occurring in the vicinity and how such impacts would be managed;</li> <li>c) details of any construction sites and mitigation, monitoring, management and rehabilitation measures specific to the site compound(s) that would be implemented;</li> </ul>	Maintains ultimate responsibility for ensuring that the contents of individual contractor CEMPs are able to satisfy this condition	Refer to Section 2.1	A CEMP will be developed specific to this stage	A CEMP will be developed specific to this stage		

ID	Requirement	AGL Proponent	Stage 0 Enabling works	Stage 1 Solar plant construction	Stage 2 Connection works construction	Stage 3 Solar plant operation	Stage 4 Transmission line maintenance and operation
			Proponent and Contractors	Solar Plant Contractor	Connection Works Contractor	Solar Plant Operator	Connection Works Operator
	<ul style="list-style-type: none"> <li>d) statutory and other obligations that the Proponent is required to fulfil during construction including all relevant approvals, consultations and agreements required from authorities and other stakeholders, and key legislation and policies;</li> <li>e) evidence of consultation with relevant public authorities required under this condition and how issues raised by the agencies have been addressed in the plan;</li> <li>f) a description of the roles and responsibilities for all relevant employees involved in the construction of the project including relevant training and induction provisions for ensuring that all employees, contractors and sub-contractors are aware of their environmental and compliance obligations under these conditions of approval;</li> <li>g) details of how the environmental performance of construction will be monitored, and what actions will be taken to address identified potential adverse environmental impacts;</li> <li>h) specific consideration of relevant measures identified in the documents referred to under conditions A2b) and A2c) of this approval;</li> <li>i) the additional requirements of this approval;</li> <li>j) a complaints handling procedure during construction identified in conditions C12 and C14;</li> </ul>						

ID	Requirement	AGL Proponent	Stage 0 Enabling works	Stage 1 Solar plant construction	Stage 2 Connection works construction	Stage 3 Solar plant operation	Stage 4 Transmission line maintenance and operation
			Proponent and Contractors	Solar Plant Contractor	Connection Works Contractor	Solar Plant Operator	Connection Works Operator
	<ul style="list-style-type: none"> <li>k) register of construction work hazards and the anticipated level of risk associated with each;</li> <li>l) measures to monitor and manage soil and water impacts in consultation with NOW including: control measures for works close to or involving waterway crossings (including rehabilitation measures following disturbance and monitoring measures and completion criteria to determine rehabilitation success), identification of construction activities that are likely to pose a risk of groundwater interference, and procedures for managing groundwater impacts should they occur;</li> <li>m) measures to monitor and manage flood impacts in consultation with NOW;</li> <li>n) measures to monitor and manage dust emissions including dust generated by traffic on unsealed public roads and unsealed internal access tracks;</li> <li>o) emergency management measures including measures to control bushfires;</li> <li>p) information on water sources.</li> </ul>						
C3.	<p>As part of the Construction Environmental Management Plan required under condition C2 of this approval, the Proponent shall prepare and implement the following:</p> <ul style="list-style-type: none"> <li>a) a <b>Flora and Fauna Management Plan</b>, developed in consultation with the OEHL, to outline measures to protect</li> </ul>	Maintains ultimate responsibility for ensuring that the	Refer to Section 2.1	Sub-plans will be developed specific to this stage	Sub-plans will be developed specific to this stage		



ID	Requirement	AGL Proponent	Stage 0 Enabling works	Stage 1 Solar plant construction	Stage 2 Connection works construction	Stage 3 Solar plant operation	Stage 4 Transmission line maintenance and operation
			Proponent and Contractors	Solar Plant Contractor	Connection Works Contractor	Solar Plant Operator	Connection Works Operator
	<p>and minimise loss of native vegetation and native fauna habitat as a result of construction of the project. The Plan shall include, but not necessarily be limited to:</p> <ul style="list-style-type: none"> <li>i. plans showing terrestrial vegetation communities; important flora and fauna habitat areas; locations of EECs, native pasture; and areas to be cleared. The plans shall also identify vegetation adjoining the site where this contains important habitat areas and/or threatened species, populations or ecological communities;</li> <li>ii. methods to manage impacts on flora and fauna species and their habitat which may be directly or indirectly affected by the project, such as location of fencing, procedures for vegetation clearing or soil removal/stockpiling and procedures for re-locating hollows or installing nesting boxes and managing weeds;</li> <li>iii. procedures to accurately determine the total area, type and condition of vegetation community to be cleared;</li> <li>iv. reference to the Ground Cover Management Plan and the Management Plan for the raptor nesting site required in condition C3(b) and B18 respectively; and</li> <li>v. a procedure to review management methods where they are found to be ineffective.</li> </ul> <p>b) <b>Ground Cover Management Plan</b>, developed in consultation with the Crown Lands Division of the Department of Trade and Investment an agronomist, to outline measures to ensure adequate vegetation cover and composition beneath the solar PV array. The Plan shall</p>	<p>contents of individual contractor sub-plans are able to satisfy this condition</p>					

ID	Requirement	AGL Proponent	Stage 0 Enabling works	Stage 1 Solar plant construction	Stage 2 Connection works construction	Stage 3 Solar plant operation	Stage 4 Transmission line maintenance and operation
			Proponent and Contractors	Solar Plant Contractor	Connection Works Contractor	Solar Plant Operator	Connection Works Operator
	<p>include, but not necessarily be limited to:</p> <ul style="list-style-type: none"> <li>i. procedures to minimise disturbance to ground cover not impacted by the project particularly in the area of the native shrubland in good condition;</li> <li>ii. procedures for the stabilisation, rehabilitation and revegetation of disturbed ground cover including reference to field trials where required;</li> <li>iii. weed management measures to control and prevent the spread of noxious weeds;</li> <li>iv. monitoring methods to assess the impact of the project on the ground cover vegetation; and</li> <li>v. a procedure to review management methods where they are found to be ineffective.</li> </ul> <p>c) a <b>Landscape Plan</b>, to minimise visual impacts from the solar plant. The Plan shall include, but not necessarily be limited to:</p> <ul style="list-style-type: none"> <li>i. identification of landscaping objectives and standards based on visual impacts;</li> <li>ii. details of species used to enhance, mitigate and/or augment landscaping to minimise the visual impact of the project, particularly with respect to the impacts on nearby residences;</li> <li>iii. implementation, management and monitoring strategies to ensure the establishment and ongoing maintenance of landscaped areas; and</li> <li>iv. a consultation strategy to seek feedback from affected residents and the interested community on the proposed landscape measures.</li> </ul> <p>d) a <b>Construction Noise Management Plan</b> to manage</p>						

ID	Requirement	AGL Proponent	Stage 0 Enabling works	Stage 1 Solar plant construction	Stage 2 Connection works construction	Stage 3 Solar plant operation	Stage 4 Transmission line maintenance and operation
			Proponent and Contractors	Solar Plant Contractor	Connection Works Contractor	Solar Plant Operator	Connection Works Operator
	<p>noise impacts during construction and to identify all feasible and reasonable noise mitigation measures. The Plan shall include, but not necessarily be limited to:</p> <ul style="list-style-type: none"> <li>i. details of construction activities and an indicative schedule for construction works;</li> <li>ii. identification of construction activities that have the potential to generate noise impacts on surrounding land uses, particularly residential areas;</li> <li>iii. detail the requirements for Noise Impact Statement(s) for discrete work areas, including construction site compounds;</li> <li>iv. detail what reasonable and feasible actions and measures would be implemented to minimise noise impacts;</li> <li>v. procedures for notifying sensitive receivers of construction activities that are likely to affect their noise amenity, as well as procedures for dealing with and responding to noise complaints;</li> <li>vi. an out-of-hours work (OOHW) protocol for the assessment, management and approval of works outside of standard construction hours as defined in condition B25 of this approval, including a risk assessment process under which an Environmental Representative may approve out-of-hour construction activities deemed to be of low environmental risk and refer high risk works for the Director-General's approval. The OOHW protocol shall detail standard assessment, mitigation and notification requirements for high and low risk out-of-hour works, and detail a standard protocol for referring applications to the Director-General; and</li> <li>vii. a description of how the effectiveness of these actions</li> </ul>						

ID	Requirement	AGL Proponent	Stage 0 Enabling works	Stage 1 Solar plant construction	Stage 2 Connection works construction	Stage 3 Solar plant operation	Stage 4 Transmission line maintenance and operation
			Proponent and Contractors	Solar Plant Contractor	Connection Works Contractor	Solar Plant Operator	Connection Works Operator
	<p>and measures would be monitored during the proposed works, clearly indicating how often this monitoring would be conducted, the locations where monitoring would take place, how the results of this monitoring would be recorded and reported; and, if any exceedance is detected how any non-compliance would be rectified.</p> <p>e) a <b>Traffic Management Plan</b> to manage traffic conflicts that may be generated during construction. In preparing the Plan, the Proponent shall consult with the Council, RMS and the Crown Lands Division of the Department of Trade and Investment. The Plan shall address the requirements of the relevant road authority and shall include, but not necessarily be limited to:</p> <ul style="list-style-type: none"> <li>i. details of how construction of the project will be managed in proximity to local and regional roads;</li> <li>ii. details of traffic routes for heavy vehicles, including any necessary route or timing restriction for oversized loads;</li> <li>iii. demonstration that all statutory responsibilities with regard to road traffic impacts have been complied with;</li> <li>iv. details of measures to minimise interactions between the project and other users of the roads such as the use of fencing, lights, barriers, traffic diversions etc;</li> <li>v. procedures for informing the public where any road access will be restricted as a result of the project;</li> <li>vi. procedures to manage construction traffic to ensure the safety of livestock and to minimise disruption to livestock;</li> <li>vii. speed limits to be observed along routes to and from</li> </ul>						

ID	Requirement	AGL Proponent	Stage 0 Enabling works	Stage 1 Solar plant construction	Stage 2 Connection works construction	Stage 3 Solar plant operation	Stage 4 Transmission line maintenance and operation
			Proponent and Contractors	Solar Plant Contractor	Connection Works Contractor	Solar Plant Operator	Connection Works Operator
	<p>viii. the site and within the site; and details of the expected behavioural requirements for vehicle drivers travelling to and from the site and within the site.</p> <p>f) an <b>Aboriginal Heritage Plan</b> to monitor and manage Aboriginal heritage shall be developed in consultation with the OEH and registered Aboriginal stakeholders, and include the following:</p> <ul style="list-style-type: none"> <li>i. details of further archaeological investigations and/or salvage measures to be carried out prior to construction;</li> <li>ii. procedures for the management of identified objects within the project site;</li> <li>iii. procedures for dealing with unidentified objects and/or human remains;</li> <li>iv. Aboriginal cultural heritage induction processes for construction personnel; and</li> <li>v. procedures for ongoing Aboriginal consultation and involvement.</li> </ul> <p>Upon receipt of the Director-General's approval, the Proponent shall provide a copy of the Plan to the Crown Land Division of the Department of Trade and Investment as soon as practicable.</p>						
	<b>Operational Environmental Management Plan</b>						
C4.	The Proponent shall prepare and implement an Operation Environmental Management Plan in accordance with the <i>Guideline for the Preparation of Environmental Management</i>	Maintains ultimate responsibility				An OEMP will be developed specific to this	An OEMP will be developed specific to this

ID	Requirement	AGL Proponent	Stage 0 Enabling works	Stage 1 Solar plant construction	Stage 2 Connection works construction	Stage 3 Solar plant operation	Stage 4 Transmission line maintenance and operation
			Proponent and Contractors	Solar Plant Contractor	Connection Works Contractor	Solar Plant Operator	Connection Works Operator
	<p><i>Plans</i> (Department of Infrastructure, Planning and Natural Resources, 2004), or any replacement guideline. The Plan is to be prepared in consultation with the Crown Lands Division of the Department of Trade and Investment and Council as relevant. The Plan shall include but not necessarily be limited to:</p> <ul style="list-style-type: none"> <li>a) identification of all statutory and other obligations that the Proponent is required to fulfil in relation to the operation of the project, including all consents, licences, approvals and consultations;</li> <li>b) a management organisational chart identifying the roles and responsibilities for all relevant employees involved in the operation of the project;</li> <li>c) overall environmental policies to be applied to the operation of the project;</li> <li>d) standards and performance measures to be applied to the project, and means by which environmental performance can be periodically monitored, reviewed and improved, (where appropriate) and what actions would be taken in the case that non-compliance with the requirements of this approval are identified. In particular the following environmental performance issues shall be addressed: <ul style="list-style-type: none"> <li>i. bushfire hazard and risk management;</li> <li>ii. management and maintenance of offsets;</li> <li>iii. inspection, monitoring and maintenance of all watercourse</li> </ul> </li> </ul>	<p>for ensuring that the contents of individual contractor OEMPs are able to satisfy this condition</p>				stage	stage

ID	Requirement	AGL Proponent	Stage 0 Enabling works	Stage 1 Solar plant construction	Stage 2 Connection works construction	Stage 3 Solar plant operation	Stage 4 Transmission line maintenance and operation
			Proponent and Contractors	Solar Plant Contractor	Connection Works Contractor	Solar Plant Operator	Connection Works Operator
	<p>crossings;</p> <p>iv. management measures for the site, including management of vegetation, soil erosion, dust weed control and landholder liaison.</p> <p>e) the environmental monitoring requirements outlined under this approval;</p> <p>f) measures to monitor and manage flood impacts in consultation with NOW;</p> <p>g) information on water sources;</p> <p>h) complaints handling procedures as identified in conditions C13 to C15;</p> <p>i) specific consideration of relevant measures to address any requirements identified in the documents referred to under conditions A2b) and A2c) of this approval; and</p> <p>j) management policies to ensure that environmental performance goals are met and comply with the conditions of this approval.</p> <p>The Plan shall be submitted for the approval of the Director-General no later than one month prior to the commencement of Operation of the project or within such period as otherwise agreed by the Director-General. Operation shall not commence until written approval has been received from the Director-General. Upon receipt of the Director-General's approval, the Proponent shall make the Plan publicly available as soon as</p>						

ID	Requirement	AGL Proponent	Stage 0 Enabling works	Stage 1 Solar plant construction	Stage 2 Connection works construction	Stage 3 Solar plant operation	Stage 4 Transmission line maintenance and operation
			Proponent and Contractors	Solar Plant Contractor	Connection Works Contractor	Solar Plant Operator	Connection Works Operator
	practicable and provide a copy of the Plan to the Crown Lands Division of the Department of Trade and Investment as soon as practicable.						
	<b>Biodiversity Offset Management Package</b>						
C5.	<p>Following final design and prior to the commencement of construction, or as otherwise agreed to by the Director-General, the Proponent shall develop and submit a Biodiversity Offset Management Package for the approval of the Director-General. The package shall detail how the ecological values lost as a result of the Project will be offset. The Biodiversity Offset Management Package shall be developed in consultation with the OEH and shall (unless otherwise agreed by the Director-General) include, but not necessarily be limited to:</p> <ul style="list-style-type: none"> <li>a) an assessment of all native vegetation communities, threatened species habitat and Willyama Common land that will either be directly or indirectly impacted by the proposal;</li> <li>b) the objectives and biodiversity outcomes to be achieved (including 'improve or maintain' biodiversity values), and the adequacy of the proposed offset considered;</li> <li>c) the final suite of the biodiversity offset measures selected and secured including but not necessarily limited to: <ul style="list-style-type: none"> <li>i. an offset proposal which is supported by a suitable metric method (such as the Biobanking Assessment Methodology);</li> <li>ii. details of the relative condition and values of</li> </ul> </li> </ul>	Maintains responsibility for preparing a single package to satisfy this condition.					



ID	Requirement	AGL Proponent	Stage 0 Enabling works	Stage 1 Solar plant construction	Stage 2 Connection works construction	Stage 3 Solar plant operation	Stage 4 Transmission line maintenance and operation
			Proponent and Contractors	Solar Plant Contractor	Connection Works Contractor	Solar Plant Operator	Connection Works Operator
	<p>communities on the offset site in comparison to those to be impacted, including all areas of native shrubland in moderate to good condition;</p> <ul style="list-style-type: none"> <li>iii. proposed management actions and expected gains;</li> </ul> <p>d) the monitoring requirements for compensatory habitat works and other biodiversity offset measures proposed to ensure the outcomes of the package are achieved, including:</p> <ul style="list-style-type: none"> <li>i. the monitoring of the condition of species and ecological communities at offset locations;</li> <li>ii. the methodology for the monitoring program(s), including the number and location of offset monitoring sites, and the sampling frequency at these sites;</li> <li>iii. provisions for the annual reporting of the monitoring results for a set period of time as determined in consultation with the OEH; and</li> </ul> <p>e) timing and responsibilities for the implementation of the provisions of the Package.</p> <p>Land offsets shall be consistent with the <i>Principles for the use of Biodiversity Offsets in NSW</i> (NSW Office of Environment and Heritage, June 2011). Any land offset shall be enduring and be secured by a conservation mechanism which protects and manages the land in perpetuity. Where land offsets cannot solely achieve compensation for the loss of habitat, additional measures shall be provided to collectively deliver an improved or maintained biodiversity outcome for the region.</p>						

ID	Requirement	AGL Proponent	Stage 0 Enabling works	Stage 1 Solar plant construction	Stage 2 Connection works construction	Stage 3 Solar plant operation	Stage 4 Transmission line maintenance and operation
			Proponent and Contractors	Solar Plant Contractor	Connection Works Contractor	Solar Plant Operator	Connection Works Operator
	<p>Where monitoring referred to in condition (d) indicates that biodiversity outcomes are not being achieved, remedial actions shall be undertaken to ensure that the objectives of the Biodiversity Offset Package are achieved.</p> <p>Within one from approval from the Director-General the Proponent shall, in conjunction with the lessee of Western Lands Lease 14240, apply to the Crown Lands Division of the Department of Trade and Investment for a Change of Lease Purpose of Western Land Lease 14240 to appropriately record the biodiversity offset on title and within the lease conditions as a conservation area.</p>						
	<b>Decommissioning Management Plan</b>						
C6.	<p>Prior to the commencement of decommissioning, or as otherwise agreed by the Director-General, the Applicant shall prepare (in consultation with the relevant landowner) and implement (following approval) a Decommissioning Management Plan for the project. The Plan shall outline the environmental management practices and procedures that are to be followed during decommissioning, and shall be prepared in consultation with the relevant agencies and in accordance with the Guideline for the Preparation of Environmental Management Plans (Department of Infrastructure, Planning and Natural Resources, 2004) or any replacement guideline. The Plan shall include, but not necessarily be limited to:</p>	<p>Maintains responsibility for preparing a single plan to satisfy this condition</p>					

ID	Requirement	AGL Proponent	Stage 0 Enabling works	Stage 1 Solar plant construction	Stage 2 Connection works construction	Stage 3 Solar plant operation	Stage 4 Transmission line maintenance and operation
			Proponent and Contractors	Solar Plant Contractor	Connection Works Contractor	Solar Plant Operator	Connection Works Operator
	<ul style="list-style-type: none"> <li>a) a description of activities to be undertaken during decommissioning of the project (including staging and scheduling);</li> <li>b) statutory and other obligations the Applicant is required to fulfil during decommissioning, including approval/consents, consultations and agreements required from authorities and other stakeholders under key legislation and policies;</li> <li>c) a description of the roles and responsibilities for relevant employees involved in the decommissioning of the project, including relevant training and induction provisions for ensuring that employees, including contractors and sub-contractors are aware of their environmental and compliance obligations under these conditions of approval;</li> <li>d) an environmental risk analysis to identify the key environmental performance issues associated with the decommissioning phase; and</li> <li>e) details of how environmental performance will be managed and monitored to meet acceptable outcomes, including what actions will be taken to address identified potential adverse environmental impacts (including any impacts arising from the staging of the decommissioning of the project). In particular, the following environmental performance issues shall be addressed in the Plan:                             <ul style="list-style-type: none"> <li>i. compounds and ancillary facilities management;</li> </ul> </li> </ul>						

ID	Requirement	AGL Proponent	Stage 0 Enabling works	Stage 1 Solar plant construction	Stage 2 Connection works construction	Stage 3 Solar plant operation	Stage 4 Transmission line maintenance and operation
			Proponent and Contractors	Solar Plant Contractor	Connection Works Contractor	Solar Plant Operator	Connection Works Operator
	<ul style="list-style-type: none"> <li>ii. noise and vibration;</li> <li>iii. traffic and access;</li> <li>iv. soil and water quality and spoil management;</li> <li>v. air quality and dust management;</li> <li>vi. hazardous material and waste management; and</li> <li>vii. hazard and risk management, including bushfire risk.</li> </ul> <p>The Plan shall be submitted for the approval of the Director-General no later than one month prior to the commencement of decommissioning, or as otherwise agreed by the Director-General. The Plan may be prepared in stages, however, decommissioning works shall not commence until written approval has been received from the Director-General. Upon receipt of the Director-General's approval, the Applicant shall provide a copy of the Plan to the relevant landowner as soon as practicable.</p>						
	<b>Decommissioning Road Dilapidation</b>						
C7.	<p>Unless otherwise agreed by the Director-General, the Proponent shall commission an independent, qualified person or team to undertake the following in consultation with the relevant road authority:</p> <ul style="list-style-type: none"> <li>a) Prior to the commencement of decommissioning of the project, the Proponent shall commission a suitably qualified road infrastructure specialist to assess the condition of all public roads proposed to be traversed by decommissioning traffic associated with the project (including over-mass or</li> </ul>	Maintains responsibility for fulfilling this condition.					

ID	Requirement	AGL Proponent	Stage 0 Enabling works	Stage 1 Solar plant construction	Stage 2 Connection works construction	Stage 3 Solar plant operation	Stage 4 Transmission line maintenance and operation
			Proponent and Contractors	Solar Plant Contractor	Connection Works Contractor	Solar Plant Operator	Connection Works Operator
	<p>over-dimensional vehicles) in consultation with the relevant road authority, and to identify any upgrade requirements to accommodate project traffic for the duration of decommissioning (including culvert, bridge and drainage design; intersection treatments; vehicle turning requirements; and site access), having regard to traffic volumes. The <b>Decommissioning Road Report</b> shall be submitted to the Director-General prior to the commencement of decommissioning works, clearly identifying recommendations made by the relevant road authority and how these have been addressed. The Proponent shall ensure that all upgrade measures identified in the report are implemented to meet the reasonable requirements of the relevant road authority, prior to the commencement of decommissioning.</p> <p>b) upon determining the haulage route(s) for decommissioning vehicles associated with the project, and prior to decommissioning, an independent and qualified person or team shall undertake a <b>Road Dilapidation Report</b>. The report shall assess the current condition of the road(s) and describe mechanisms to restore any damage that may result due to traffic and transport related to the construction of the project. The Report shall be submitted to the relevant road authority for review prior to the commencement of haulage.</p>						

ID	Requirement	AGL Proponent	Stage 0 Enabling works	Stage 1 Solar plant construction	Stage 2 Connection works construction	Stage 3 Solar plant operation	Stage 4 Transmission line maintenance and operation
			Proponent and Contractors	Solar Plant Contractor	Connection Works Contractor	Solar Plant Operator	Connection Works Operator
	<p>Following completion of decommissioning, a subsequent report shall be prepared to assess any damage that may have resulted from the decommissioning of the project.</p> <p>Measures undertaken to restore or reinstate roads affected by the project shall be undertaken in a timely manner, in accordance with the reasonable requirements of the relevant road authority, and at the full expense of the Proponent.</p>						
	<b>REPORTING</b>						
	<b>Incident Reporting</b>						
C8.	<p>The Proponent shall notify, at the earliest opportunity, the Director-General and any other relevant agencies of any incident that has caused, or threatens to cause, material harm to the environment. For any other incident associated with the project, the Proponent shall notify the Director-General and any other relevant agencies as soon as practicable after the Proponent becomes aware of the incident. Within 7 days of the date of the incident, the Proponent shall provide the Director-General and any relevant agencies with a detailed report on the incident, and such further reports as may be requested.</p>	Maintains responsibility for reporting to satisfy this condition	Incident reporting protocols will be developed specific to this stage	Incident reporting protocols will be developed specific to this stage	Incident reporting protocols will be developed specific to this stage	Incident reporting protocols will be developed specific to this stage	Incident reporting protocols will be developed specific to this stage
	<b>Regular Reporting</b>						
C9.	<p>The Proponent shall provide regular reporting on the environmental performance of the project on its website, in accordance with the reporting arrangements in any plans or</p>	Maintains responsibility for reporting to satisfy this	Applicable	Applicable	Applicable	Applicable	Applicable

ID	Requirement	AGL Proponent	Stage 0 Enabling works	Stage 1 Solar plant construction	Stage 2 Connection works construction	Stage 3 Solar plant operation	Stage 4 Transmission line maintenance and operation
			Proponent and Contractors	Solar Plant Contractor	Connection Works Contractor	Solar Plant Operator	Connection Works Operator
	programs approved under the conditions of this approval.	condition					
	<b>COMMUNITY</b>						
	<b>Community Information, Consultation and Involvement</b>						
C10.	Subject to reasonable confidentiality requirements, the Proponent shall make all documents required under this approval available for public inspection on request.	Maintains responsibility for addressing this condition					
	<b>Provision of Electronic Information</b>						
C11.	<p>Prior to the commencement of construction, the Proponent shall establish a dedicated website or maintain dedicated pages within its existing website for the provision of electronic information associated with the project. The Proponent shall publish and maintain up-to-date information on this website or dedicated pages including, but not necessarily limited to:</p> <ul style="list-style-type: none"> <li>a) the status of the project;</li> <li>b) a copy of this approval and any future modification to this approval;</li> <li>c) a copy of each relevant environmental approval, licence or permit required and obtained in relation to the project;</li> <li>d) a copy of each plan, report, or monitoring program required by this approval; and</li> <li>e) details of the outcomes of compliance reviews and audits of the project..</li> </ul>	Maintains responsibility for addressing this condition					

ID	Requirement	AGL Proponent	Stage 0 Enabling works	Stage 1 Solar plant construction	Stage 2 Connection works construction	Stage 3 Solar plant operation	Stage 4 Transmission line maintenance and operation
			Proponent and Contractors	Solar Plant Contractor	Connection Works Contractor	Solar Plant Operator	Connection Works Operator
	<b>Community Information Plan</b>						
C12.	<p>Prior to the commencement of construction, the Proponent shall prepare and implement a Community Information Plan which sets out the community communication and consultation processes to be implemented during construction and operation of the project. The Plan shall include but not be limited to:</p> <ul style="list-style-type: none"> <li>a) procedures to inform the local community of planned investigations and construction activities, including blasting works (if any);</li> <li>b) procedures to inform the relevant community of construction traffic routes and any potential disruptions to traffic flows and amenity impacts;</li> <li>c) procedures to consult with local landowners/residents with regard to construction traffic to ensure the safety of livestock and to limit disruption to livestock movements;</li> <li>d) procedures to inform the community where work outside the construction hours specified in condition B25, in particular noisy activities, has been approved; and</li> <li>e) procedures to inform and consult with the Crown Lands Division of the Department of Trade and Investment to rehabilitate impacted land.</li> </ul>	<p>A Community Consultation Plan would be developed to address this and other issues related to the community. The Applicant maintains responsibility for preparing and implementing this plan to satisfy this condition.</p>					
	<b>Complaints Procedure</b>						



ID	Requirement	AGL Proponent	Stage 0 Enabling works	Stage 1 Solar plant construction	Stage 2 Connection works construction	Stage 3 Solar plant operation	Stage 4 Transmission line maintenance and operation
			Proponent and Contractors	Solar Plant Contractor	Connection Works Contractor	Solar Plant Operator	Connection Works Operator
C13.	<p>Prior to the commencement of construction, the Proponent shall ensure that the following are available for community complaints for the life of the project (including construction and operation) or as otherwise agreed by the Director-General:</p> <ul style="list-style-type: none"> <li>a) a 24 hour telephone number on which complaints about construction and operational activities at the site may be registered;</li> <li>b) a postal address to which written complaints may be sent; and</li> <li>c) an email address to which electronic complaints may be transmitted.</li> </ul> <p>The telephone number, postal address and e-mail address shall be advertised in a newspaper circulating in the local area on at least one occasion prior to the commencement of construction; and at six-monthly intervals during construction and for a period of two years following commencement of operation of the project. These details shall also be provided on the Proponent's internet site required by condition C11. The telephone number, the postal address and the email address shall be displayed on a sign near the entrance to the construction site(s), in a position that is clearly visible to the public.</p>	Maintains responsibility for addressing this condition					
C14.	The Proponent shall record details of all complaints received through the means listed in condition C13 of this approval in an up-to-date Complaints Register. The Register shall record, but	One complaints strategy will be developed by	Applicable. Required to provide information	Applicable. Required to provide	Applicable. Required to provide	Applicable. Required to provide	Applicable. Required to provide

ID	Requirement	AGL Proponent	Stage 0 Enabling works	Stage 1 Solar plant construction	Stage 2 Connection works construction	Stage 3 Solar plant operation	Stage 4 Transmission line maintenance and operation
			Proponent and Contractors	Solar Plant Contractor	Connection Works Contractor	Solar Plant Operator	Connection Works Operator
	<p>not necessarily be limited to:</p> <ul style="list-style-type: none"> <li>d) the date and time, of the complaint;</li> <li>e) the means by which the complaint was made (telephone, mail or email);</li> <li>f) any personal details of the complainant that were provided, or if no details were provided, a note to that effect;</li> <li>g) the nature of the complaint;</li> <li>h) any action(s) taken by the Applicant in relation to the complaint, including timeframes for implementing the action; and</li> <li>i) if no action was taken by the Applicant in relation to the complaint, the reason(s) why no action was taken.</li> </ul> <p>The Complaints Register shall be made available for inspection by the Director-General upon request.</p>	AGL and implemented throughout each stage to address this condition.	to Proponent.	information to Proponent.	information to Proponent.	information to Proponent.	information to Proponent.
C15.	The Proponent shall provide an initial response to any complaints made in relation to the project during construction or operation within 48 hours of the complaint being made. The response and any subsequent action taken shall be recorded in accordance with condition C14. Any subsequent detailed response or action is to be provided within two weeks.	Maintains responsibility for addressing this condition	Applicable	Applicable	Applicable	Applicable	Applicable
	<b>COMPLIANCE</b>						
	<b>Compliance Tracking Program</b>						
C16.	Prior to the commencement of construction, the Proponent shall	Maintains	Compliance tracking	Compliance	Compliance	Compliance	Compliance

ID	Requirement	AGL Proponent	Stage 0 Enabling works	Stage 1 Solar plant construction	Stage 2 Connection works construction	Stage 3 Solar plant operation	Stage 4 Transmission line maintenance and operation
			Proponent and Contractors	Solar Plant Contractor	Connection Works Contractor	Solar Plant Operator	Connection Works Operator
	<p>develop and implement a Compliance Tracking Program, to track compliance with the requirements of this approval during the construction and operation of the project and shall include, but not necessarily be limited to:</p> <ul style="list-style-type: none"> <li>a) provisions for periodic reporting of compliance status to the Director-General including at least prior to the commencement of construction of the project, prior to the commencement of operation of the project and within two years of operation commencement;</li> <li>b) a program for independent environmental auditing in accordance with AS/NZ ISO 19011:2003 - Guidelines for Quality and/or Environmental Management Systems Auditing;</li> <li>c) procedures for rectifying any non-compliance identified during environmental auditing or review of compliance;</li> <li>d) mechanisms for recording environmental incidents and actions taken in response to those incidents;</li> <li>e) provisions for reporting environmental incidents to the Director-General during construction and operation; and</li> <li>f) provisions for ensuring all employees, contractors and sub-contractors are aware of, and comply with, the conditions of this approval relevant to their respective activities.</li> </ul>	responsibility for addressing this condition	would be undertaken for relevant conditions	tracking would be undertaken for relevant conditions	tracking would be undertaken for relevant conditions	tracking would be undertaken for relevant conditions	tracking would be undertaken for relevant conditions
<b>Statement of Commitments</b>							

ID	Requirement	AGL Proponent	Stage 0 Enabling works	Stage 1 Solar plant construction	Stage 2 Connection works construction	Stage 3 Solar plant operation	Stage 4 Transmission line maintenance and operation
			Proponent and Contractors	Solar Plant Contractor	Connection Works Contractor	Solar Plant Operator	Connection Works Operator
	<b>Environmental Management</b>						
EM1	The head contractor for the project will have an environmental management system, including a performance and compliance auditing program.	Maintains responsibility for addressing this commitment.	Applicable	Applicable	Applicable		
EM2	A Construction Environmental Management Plan (CEMP) will be prepared and implemented before the start of any construction activities. The CEMP will include details on the Aboriginal Heritage Management Plan, which will be finalised and implemented prior to the commencement of construction of the solar plant.	Maintains ultimate responsibility for ensuring that the contents of individual contractor sub-plans are able to satisfy this commitment.	Refer to Section 2.1.	Sub-plans will be developed specific to this stage	Sub-plans will be developed specific to this stage		
EM3	A CEMP and an Operation Environmental Management Plan (OEMP) will be prepared for the site in consultation with the relevant authorities including the NSW Office of Water, OEH and RMS.	Maintains ultimate responsibility for ensuring that the contents of individual				An OEMP will be developed specific to this stage	An OEMP will be developed specific to this stage

ID	Requirement	AGL Proponent	Stage 0 Enabling works	Stage 1 Solar plant construction	Stage 2 Connection works construction	Stage 3 Solar plant operation	Stage 4 Transmission line maintenance and operation
			Proponent and Contractors	Solar Plant Contractor	Connection Works Contractor	Solar Plant Operator	Connection Works Operator
		contractor OEMPs are able to satisfy this condition					
	<b>Community Consultation</b>						
CC1	A community consultation plan will be prepared and implemented. The plan will include a project phone number, e-mail and website for community input, a complaints handling procedure, and procedures for targeted consultation with affected stakeholders.	Maintains responsibility for addressing this commitment.					
	<b>Visual Impacts</b>						
V1	Vegetation removal will be avoided as far as practicable during construction. Any native vegetation near the outside edge of the solar PV plant site boundary will be cordoned off to minimise the risk of accidental disturbance.	Maintains ultimate responsibility for commitment being met.	Applicable	Applicable	Applicable		
V2	Vehicles will remain on designated paths during construction to avoid degradation of the landscape.	Maintains ultimate responsibility for commitment being met.	Applicable	Applicable	Applicable		
V3	Construction equipment and infrastructure will be demobilised	Maintains	Applicable	Applicable	Applicable		

ID	Requirement	AGL Proponent	Stage 0 Enabling works	Stage 1 Solar plant construction	Stage 2 Connection works construction	Stage 3 Solar plant operation	Stage 4 Transmission line maintenance and operation
			Proponent and Contractors	Solar Plant Contractor	Connection Works Contractor	Solar Plant Operator	Connection Works Operator
	from site as soon as practicable and all unnecessary project flagging and signage will be removed and disposed of at the completion of construction.	ultimate responsibility for commitment being met.					
V4	Plantings of locally indigenous, shrubby vegetation will be provided along the north eastern and part of the north western boundary of the solar PV plant site to mitigate the visual impacts on views to The Pinnacles from the Barrier Highway, Silverton Road and Magazine Way. Plant species will be selected so as not to block views of The Pinnacles.	Maintains ultimate responsibility for commitment being met.		A sub-plan will be developed specific to this stage			
V5	Access tracks will be constructed of locally sourced gravel (to the extent required) that matches the colour of the existing site surface as far as practicable.	Maintains ultimate responsibility for commitment being met.	Applicable	Applicable	Applicable		
V6	Underground cabling will be used where practical. The colour of aboveground ancillary electrical equipment associated with the solar PV plant will be selected to best integrate with the surrounding landscape, with preference given to earthy tones such as pale green and pale brown.	Maintains ultimate responsibility for commitment being met.	Applicable	Applicable	Applicable		
V7	In the event that glare from the solar plant is evident from a public road and causes a nuisance, distraction and/or hazard to motorists, the proponent shall immediately implement further glare mitigation measures.	Maintains ultimate responsibility for commitment		Applicable			

ID	Requirement	AGL Proponent	Stage 0 Enabling works	Stage 1 Solar plant construction	Stage 2 Connection works construction	Stage 3 Solar plant operation	Stage 4 Transmission line maintenance and operation
			Proponent and Contractors	Solar Plant Contractor	Connection Works Contractor	Solar Plant Operator	Connection Works Operator
		being met.					
	<b>Noise Impacts</b>						
N1	Although construction noise impacts are unlikely, identified sensitive receivers in the vicinity of the project site are to be given adequate prior notice of the construction program, kept informed throughout the construction period, and provided with a name and contact number for construction noise information and complaints. Any noise complaints will be dealt with through the standard complaints management procedure identified in the community consultation plan.	Maintains ultimate responsibility for commitment being met.	Applicable	Applicable	Applicable		
N2	Construction noise and vibration will be minimised as far as practical through the implementation of all feasible and reasonable measures. These measures will be specified within a Construction Noise and Vibration Management Plan (CNVMP). The CNVMP will also include project-specific objectives and protocols for management of construction noise.	Maintains ultimate responsibility for ensuring that the contents of individual contractor sub-plans are able to satisfy this condition	Environmental risk management documentation specific to the enabling works will be developed if required.	A Noise Management Sub-plan will be developed specific to this stage in accordance with MCoA C3(d).	A Noise Management Sub-plan will be developed specific to this stage in accordance with MCoA C3(d).		
N3	Construction activities will take place during standard working hours (7.00am to 6.00pm Monday to Friday, 8.00am to 1.00pm	Maintains ultimate	Environmental risk management	A Noise Management	A Noise Management		

ID	Requirement	AGL Proponent	Stage 0 Enabling works	Stage 1 Solar plant construction	Stage 2 Connection works construction	Stage 3 Solar plant operation	Stage 4 Transmission line maintenance and operation
			Proponent and Contractors	Solar Plant Contractor	Connection Works Contractor	Solar Plant Operator	Connection Works Operator
	Saturday and no work on Sunday or public holidays). Any work outside of these hours will be undertaken in accordance with the Interim Construction Noise Guideline (OEH, 2009). The CNVMP will specify protocols for notification of potentially affected receivers for out-of-hours work.	responsibility for condition being met.	documentation specific to the enabling works will be developed if required.	Sub-plan will be developed specific to this stage in accordance with MCoA C3(d). This sub-plan will include an OOHW protocol.	Sub-plan will be developed specific to this stage in accordance with MCoA C3(d). This sub-plan will include an OOHW protocol.		
N4	Where feasible, the proponent will conduct noisy construction activities in consultation with sensitive receivers.	Maintains ultimate responsibility for commitment being met.	Applicable	Applicable	Applicable		
N5	Construction equipment and methodologies will be selected in consideration of the need to minimise noise levels where feasible and reasonable.	Maintains ultimate responsibility for commitment being met.	Applicable	Applicable	Applicable		
	<b>Flora and Fauna</b>						
FF1	Clearing of native vegetation will be restricted to the minimum area necessary for construction. Clearing boundaries will be	Maintains ultimate	Environmental risk management	A Flora and Fauna	A Flora and Fauna		



ID	Requirement	AGL Proponent	Stage 0 Enabling works	Stage 1 Solar plant construction	Stage 2 Connection works construction	Stage 3 Solar plant operation	Stage 4 Transmission line maintenance and operation
			Proponent and Contractors	Solar Plant Contractor	Connection Works Contractor	Solar Plant Operator	Connection Works Operator
	specified within the CEMP and delineated on site with appropriate boundary or exclusion fencing.	responsibility for commitment being met.	documentation specific to the enabling works will be developed if required.	Management Sub-plan will be developed specific to this stage in accordance with MCoA C3(a).	Management Sub-plan will be developed specific to this stage in accordance with MCoA C3(a).		
FF2	Vehicle speed limits will be enforced along internal access roads to minimise the incidence of wildlife mortality from construction and operation vehicles.	Maintains ultimate responsibility for commitment being met.	Environmental risk management documentation specific to the enabling works will be developed if required.	A Flora and Fauna Management Sub-plan will be developed specific to this stage in accordance with MCoA C3(a).	A Flora and Fauna Management Sub-plan will be developed specific to this stage in accordance with MCoA C3(a).		
FF3	A buffer zone of 500 metres in radius will be placed around the raptor nest site should it still be present at time of construction. No construction vehicles or personnel will enter this restricted area unless assessing the presence of this species.	Maintains ultimate responsibility for commitment being met.	Environmental risk management documentation specific to the enabling works will be developed if required.	A Flora and Fauna Management Sub-plan will be developed specific to this stage in	A Flora and Fauna Management Sub-plan will be developed specific to this stage in		

ID	Requirement	AGL Proponent	Stage 0 Enabling works	Stage 1 Solar plant construction	Stage 2 Connection works construction	Stage 3 Solar plant operation	Stage 4 Transmission line maintenance and operation
			Proponent and Contractors	Solar Plant Contractor	Connection Works Contractor	Solar Plant Operator	Connection Works Operator
				accordance with MCoA C3(a).	accordance with MCoA C3(a).		
FF4	The CEMP and the OEMP will include monitoring requirements for the raptor nest located near to the project site. The monitoring requirements will be prepared in consultation with OEH.	Maintains ultimate responsibility for commitment being met.	Environmental risk management documentation specific to the enabling works will be developed if required.	A Flora and Fauna Management Sub-plan will be developed specific to this stage in accordance with MCoA C3(a).	A Flora and Fauna Management Sub-plan will be developed specific to this stage in accordance with MCoA C3(a).	An OEMP will be developed specific to this stage in accordance with MCoA C4.	An OEMP will be developed specific to this stage in accordance with MCoA C4.
FF5	The site CEMP will specify management procedures for vegetation clearing and details for an ecologist to undertake a pre-clearing survey and to be present during all clearing activities.	Maintains ultimate responsibility for commitment being met.	Environmental risk management documentation specific to the enabling works will be developed if required.	A Flora and Fauna Management Sub-plan will be developed specific to this stage in accordance with MCoA C3(a).	A Flora and Fauna Management Sub-plan will be developed specific to this stage in accordance with MCoA C3(a).		
FF6	Appropriate waste management practices will be followed to prevent attracting or encouraging feral animals to the site	Maintains ultimate responsibility	Environmental risk management documentation specific	A Flora and Fauna Management	A Flora and Fauna Management		

ID	Requirement	AGL Proponent	Stage 0 Enabling works	Stage 1 Solar plant construction	Stage 2 Connection works construction	Stage 3 Solar plant operation	Stage 4 Transmission line maintenance and operation
			Proponent and Contractors	Solar Plant Contractor	Connection Works Contractor	Solar Plant Operator	Connection Works Operator
	during the construction period.	for commitment being met.	to the enabling works will be developed if required.	Sub-plan will be developed specific to this stage in accordance with MCoA C3(a).	Sub-plan will be developed specific to this stage in accordance with MCoA C3(a).		
FF7	Degraded portions of the site outside of the impact footprint will be restored to the extent required to a) reduce the potential for wind erosion, b) improve opportunities for fauna habitation and movement across the landscape, and c) reduce the risk of weed invasion.	Maintains ultimate responsibility for commitment being met.		A Ground Cover Management Sub-Plan and Landscape Management Sub-Plan will be developed specific to this stage in accordance with MCoA C3(b) and C3(c).	A Ground Cover Management Sub-Plan and Landscape Management Sub-Plan will be developed specific to this stage in accordance with MCoA C3(b) and C3(c).		
FF8	Site restoration and re-vegetation activities will be undertaken during and after construction. All re-vegetation activities will be undertaken using locally endemic native species.	Maintains ultimate responsibility for commitment being met.	Applicable	A Ground Cover Management Sub-Plan and Landscape Management Sub-Plan will be	A Ground Cover Management Sub-Plan and Landscape Management Sub-Plan will be		

ID	Requirement	AGL Proponent	Stage 0 Enabling works	Stage 1 Solar plant construction	Stage 2 Connection works construction	Stage 3 Solar plant operation	Stage 4 Transmission line maintenance and operation
			Proponent and Contractors	Solar Plant Contractor	Connection Works Contractor	Solar Plant Operator	Connection Works Operator
				developed specific to this stage in accordance with MCoA C3(b) and C3(c).	developed specific to this stage in accordance with MCoA C3(b) and C3(c).		
FF9	Appropriate weed management strategies will be implemented during construction and operation.	Maintains ultimate responsibility for commitment being met.	Applicable	A Ground Cover Management Sub-Plan and Landscape Management Sub-Plan will be developed specific to this stage in accordance with MCoA C3(b) and C3(c).	A Ground Cover Management Sub-Plan and Landscape Management Sub-Plan will be developed specific to this stage in accordance with MCoA C3(b) and C3(c).		
FF10	An Offset Management Strategy will be developed, including an Offset Management and Rehabilitation Plan, in consultation with OEH. The Strategy is to include: <ul style="list-style-type: none"> <li>• Details on the area of the offset.</li> <li>• Vegetation communities present and their current condition.</li> <li>• Tenure of the land within the offset.</li> </ul>	Maintains responsibility for preparing a single package to satisfy this commitment.					

ID	Requirement	AGL Proponent	Stage 0 Enabling works	Stage 1 Solar plant construction	Stage 2 Connection works construction	Stage 3 Solar plant operation	Stage 4 Transmission line maintenance and operation
			Proponent and Contractors	Solar Plant Contractor	Connection Works Contractor	Solar Plant Operator	Connection Works Operator
	<ul style="list-style-type: none"> <li>• Identification of a mechanism that protects the area in perpetuity.</li> <li>• Identification and costing of management issues, including fencing and weed/feral animal control.</li> <li>• Monitoring details to determine the effectiveness of the management actions.</li> </ul> <p>The Offset Management Strategy will be prepared in consultation with the agencies responsible for the management of the Willyama Common and will consider the cumulative impacts of clearing in the Willyama Common for the transmission line.</p>	The Plan will be developed in accordance with MCoA C5					
	<b>Aboriginal Heritage</b>						
IH1	The proponent will consult with Aboriginal stakeholders regarding management of the 14 Aboriginal heritage sites recorded during the site survey. An Aboriginal Heritage Management Plan (AHMP) will be developed in consultation with these stakeholders and OEH to specify how the sites will be protected in-situ, relocated or salvaged.	Maintains ultimate responsibility for commitment being met.	Environmental risk management documentation specific to the enabling works will be developed if required.	A Heritage Management Sub-plan will be developed specific to this stage in accordance with MCoA C3(f).	A Heritage Management Sub-plan will be developed specific to this stage in accordance with MCoA C3(f).		
IH2	Protocols will be developed to manage and protect Aboriginal artefacts or suspected human remains which may be	Maintains ultimate	Environmental risk management	A Heritage Management	A Heritage Management		

ID	Requirement	AGL Proponent	Stage 0 Enabling works	Stage 1 Solar plant construction	Stage 2 Connection works construction	Stage 3 Solar plant operation	Stage 4 Transmission line maintenance and operation
			Proponent and Contractors	Solar Plant Contractor	Connection Works Contractor	Solar Plant Operator	Connection Works Operator
	encountered during construction. These protocols will be specified in the AHMP and may include stopping works in the vicinity of the find, notification of relevant stakeholders and implementation of an appropriate management strategy.	responsibility for commitment being met.	documentation specific to the enabling works will be developed if required.	Sub-plan will be developed specific to this stage in accordance with MCoA C3(f).	Sub-plan will be developed specific to this stage in accordance with MCoA C3(f).		
IH3	All construction personnel will receive training in the management of Aboriginal artefacts and objects, including legal obligations, the application of protocols, and the recognition of artefacts.	Maintains ultimate responsibility for commitment being met.	Applicable	A Heritage Management Sub-plan will be developed specific to this stage in accordance with MCoA C3(f). Training requirements will also be outlined in the CEMP for this stage.	A Heritage Management Sub-plan will be developed specific to this stage in accordance with MCoA C3(f). Training requirements will also be outlined in the CEMP for this stage.		
	<b>Traffic and Transport</b>						
TT1	The proponent or its contractor will determine the final details of	Maintains	Applicable	A Traffic	A Traffic		

ID	Requirement	AGL Proponent	Stage 0 Enabling works	Stage 1 Solar plant construction	Stage 2 Connection works construction	Stage 3 Solar plant operation	Stage 4 Transmission line maintenance and operation
			Proponent and Contractors	Solar Plant Contractor	Connection Works Contractor	Solar Plant Operator	Connection Works Operator
	haulage during detailed transport planning, in consultation with RMS. Road and intersection works will be approved and completed prior to the commencement of construction of the solar plant, and will be at no cost to RMS.	ultimate responsibility for commitment being met.		Management Sub-plan will be developed specific to this stage in accordance with MCoA C3(e).	Management Sub-plan will be developed specific to this stage in accordance with MCoA C3(e).		
TT2	The existing site access road off the Barrier Highway and the associated intersection will be upgraded in accordance with RMS standards to accommodate construction traffic and on-going maintenance access.	Maintains ultimate responsibility for commitment being met in accordance with MCoA B31					
TT3	A Traffic Management Plan will be prepared and implemented for the construction, operation and decommissioning phases of the project. The plan will specify: <ul style="list-style-type: none"> <li>• Travel routes and parking areas for construction and operations traffic.</li> <li>• Origin, number, size and frequency of vehicles accessing/exiting the site.</li> <li>• Speed limits and directions of travel on the access roads within the site.</li> </ul>	Maintains ultimate responsibility for commitment being met.	Applicable	A Traffic Management Sub-plan will be developed specific to this stage in accordance with MCoA C3(e).	A Traffic Management Sub-plan will be developed specific to this stage in accordance with MCoA C3(e).		

ID	Requirement	AGL Proponent	Stage 0 Enabling works	Stage 1 Solar plant construction	Stage 2 Connection works construction	Stage 3 Solar plant operation	Stage 4 Transmission line maintenance and operation
			Proponent and Contractors	Solar Plant Contractor	Connection Works Contractor	Solar Plant Operator	Connection Works Operator
	<ul style="list-style-type: none"> <li>• Loads, weights and lengths of haulage and construction related vehicles.</li> <li>• Scheduling of haulage vehicle movements to minimise convoy length and platoons.</li> <li>• Traffic control requirements, including requirements for signage, barriers and traffic control personnel.</li> <li>• The management and coordination of vehicle movements to the site and measures to limit disruption to other motorists, emergency vehicles and school bus timetables.</li> <li>• Details of intersection improvement works in accordance with Austroads Guide to Road Design 2010 and RMS supplements.</li> </ul>						
TT4	A road condition survey will be undertaken before construction to determine the potential impacts on the structural integrity of road infrastructure. The proponent will prepare a Traffic Management Plan in consultation with Broken Hill City Council and the RMS. This plan will set out the requirements for road management and monitoring.	Maintains ultimate responsibility for commitment being met.		Applicable	Applicable		
	<b>Hazard and Risk</b>						
HR1	The proposed transmission line route has been selected to avoid EMF impacts on sensitive receivers.	Maintains ultimate responsibility for commitment			Applicable		



ID	Requirement	AGL Proponent	Stage 0 Enabling works	Stage 1 Solar plant construction	Stage 2 Connection works construction	Stage 3 Solar plant operation	Stage 4 Transmission line maintenance and operation
			Proponent and Contractors	Solar Plant Contractor	Connection Works Contractor	Solar Plant Operator	Connection Works Operator
		being met.					
HR2	An appropriate Asset Protection Zone will be maintained around the solar PV plant and transmission line.	Maintains ultimate responsibility for commitment being met.				An OEMP will be developed specific to this stage in accordance with MCoA C4.	An OEMP will be developed specific to this stage in accordance with MCoA C4.
HR3	Any dangerous goods or hazardous materials kept at the construction site will be stored in a securely bunded area of sufficient containment capacity.	Maintains ultimate responsibility for condition being met in accordance with MCoA B5	Applicable	Applicable	Applicable	Applicable	Applicable
HR4	Where dangerous goods or hazardous materials are to be stored on the construction site, an effective spill kit will be available for use at all times. Any accidental spills will be contained and cleaned up immediately.	Maintains ultimate responsibility for condition being met in accordance with MCoA B5	Applicable	Applicable	Applicable	Applicable	Applicable
HR5	Major plant and equipment will be re-fuelled either off site or by a mobile mini-fuel tanker with a spill procedure and spill kit.	Maintains ultimate	Applicable	Applicable	Applicable	Applicable	Applicable

ID	Requirement	AGL Proponent	Stage 0 Enabling works	Stage 1 Solar plant construction	Stage 2 Connection works construction	Stage 3 Solar plant operation	Stage 4 Transmission line maintenance and operation
			Proponent and Contractors	Solar Plant Contractor	Connection Works Contractor	Solar Plant Operator	Connection Works Operator
		responsibility for condition being met in accordance with MCoA B5					
HR6	Transport of dangerous goods or hazardous materials will be undertaken by an appropriately licensed contractor.	Maintains ultimate responsibility for condition being met in accordance with MCoA B5	Applicable	Applicable	Applicable	Applicable	Applicable
HR7	The proponent will develop a Risk Register to identify potential incidents that may occur during construction and the appropriate mitigation procedures.	Maintains ultimate responsibility for commitment being met. Risk registers will form part of both the CEMP and OEMP	Applicable	Applicable. A CEMP will be developed specific to this stage in accordance with MCoA C3.	Applicable. A CEMP will be developed specific to this stage in accordance with MCoA C3.	Applicable. An OEMP will be developed specific to this stage in accordance with MCoA C4.	Applicable. An OEMP will be developed specific to this stage in accordance with MCoA C4.
	<b>Water Management (water supply, water quality and waterways)</b>						
WM1	Appropriate erosion and sediment control measures, consistent	Maintains	Applicable	Applicable	Applicable		

ID	Requirement	AGL Proponent	Stage 0 Enabling works	Stage 1 Solar plant construction	Stage 2 Connection works construction	Stage 3 Solar plant operation	Stage 4 Transmission line maintenance and operation
			Proponent and Contractors	Solar Plant Contractor	Connection Works Contractor	Solar Plant Operator	Connection Works Operator
	with the guidelines of the 'Blue Book' (Landcom, 2006), will be established before any clearing, excavation or ground disturbance begins and will be maintained in effective working order until the works have been completed and the affected ground surfaces stabilised.	ultimate responsibility for commitment being met.					
WM2	The area of soil exposure/ disturbance will be kept to the minimum amount necessary.	Maintains ultimate responsibility for commitment being met.	Applicable	Applicable	Applicable		
WM3	Stockpiles of spoil, fill or erodible material will not be placed in or near watercourses or drainage lines.	Maintains ultimate responsibility for commitment being met.	Applicable	Applicable	Applicable		
WM4	Construction traffic will be confined to existing established roads and access tracks. During construction, the site access junction with the Barrier Highway will be monitored for build-up of soil or debris. Any soil or debris tracked onto the road will be removed at the end of each work day and disposed of appropriately.	Maintains ultimate responsibility for commitment being met.	Applicable	Applicable	Applicable		
WM5	Disturbed surfaces will be stabilised and restored as soon as possible using appropriate stabilisation and re-vegetation measures. The plants used for site restoration will comprise	Maintains ultimate responsibility	Applicable	Applicable	Applicable		

ID	Requirement	AGL Proponent	Stage 0 Enabling works	Stage 1 Solar plant construction	Stage 2 Connection works construction	Stage 3 Solar plant operation	Stage 4 Transmission line maintenance and operation
			Proponent and Contractors	Solar Plant Contractor	Connection Works Contractor	Solar Plant Operator	Connection Works Operator
	native species endemic to the project site and suitable for the site conditions, taking into account soils, climate and shading.	for commitment being met.					
WM6	To avoid accidental contamination of receiving waterways with chemicals or fuels, the commitments identified for <i>Hazards and risks</i> (above) will be adhered to.	Maintains ultimate responsibility for condition being met in accordance with MCoA B5	Applicable	Applicable	Applicable	Applicable	Applicable
	<b>Land Use</b>						
L1	Nearby landowners or leaseholders will be informed of the construction schedule and scope of works prior to construction.	Maintains ultimate responsibility for commitment being met.	Applicable	Applicable	Applicable		
L2	The NSW Department of Primary Industries and the affected leaseholder will be consulted regarding alteration of the lease conditions at the site.	Maintains ultimate responsibility for commitment being met.	Applicable	Applicable	Applicable		
L3	Easements and associated land use restrictions will be identified on property titles.	Maintains ultimate responsibility	Applicable	Applicable	Applicable		

ID	Requirement	AGL Proponent	Stage 0 Enabling works	Stage 1 Solar plant construction	Stage 2 Connection works construction	Stage 3 Solar plant operation	Stage 4 Transmission line maintenance and operation
			Proponent and Contractors	Solar Plant Contractor	Connection Works Contractor	Solar Plant Operator	Connection Works Operator
		for commitment being met.					
L4	Access to properties surrounding the construction site will not be impeded by construction activities.	Maintains ultimate responsibility for commitment being met.	Applicable	Applicable	Applicable		
L5	The proponent will consult with current mining exploration and extraction licence and lease holders.	Maintains ultimate responsibility for commitment being met.	Applicable	Applicable	Applicable		
	<b>Non-indigenous Heritage</b>						
H1	Protocols will be developed to manage and protect artefacts or suspected human remains which may be encountered during construction. The protocols may, as required, include stopping all works in the vicinity of the find, notification of relevant stakeholders and implementation of an appropriate management strategy.	Maintains ultimate responsibility for commitment being met.	Applicable	A Heritage Management Sub-plan will be developed specific to this stage in accordance with MCoA C3(f).	A Heritage Management Sub-plan will be developed specific to this stage in accordance with MCoA C3(f).		
H2	All construction personnel will receive training in the	Maintains	Applicable	A Heritage	A Heritage		

ID	Requirement	AGL Proponent	Stage 0 Enabling works	Stage 1 Solar plant construction	Stage 2 Connection works construction	Stage 3 Solar plant operation	Stage 4 Transmission line maintenance and operation
			Proponent and Contractors	Solar Plant Contractor	Connection Works Contractor	Solar Plant Operator	Connection Works Operator
	management of non-Indigenous relics, including legal obligations, the application of protocols, and the recognition of relics.	ultimate responsibility for commitment being met.		Management Sub-plan will be developed specific to this stage in accordance with MCoA C3(f). Training requirements will also be outlined in the CEMP for this stage.	Management Sub-plan will be developed specific to this stage in accordance with MCoA C3(f). Training requirements will also be outlined in the CEMP for this stage.		
<b>Socio-economic Issues</b>							
S1	Advance notification will be given to nearby residents (including any potentially affected property owners and occupants) on the construction schedule, construction works and access arrangements.	Maintains ultimate responsibility for commitment being met.	Applicable	Applicable	Applicable		
<b>Geology and Soils</b>							
GS1	The commitments identified for Water management above will address the risks of soil erosion. No additional actions are	Maintains ultimate	Applicable	Applicable	Applicable		

ID	Requirement	AGL Proponent	Stage 0 Enabling works	Stage 1 Solar plant construction	Stage 2 Connection works construction	Stage 3 Solar plant operation	Stage 4 Transmission line maintenance and operation
			Proponent and Contractors	Solar Plant Contractor	Connection Works Contractor	Solar Plant Operator	Connection Works Operator
	required for geology and soils.	responsibility for commitment being met.					
	<b>Air Quality and Climate</b>						
AQ1	During construction and operation, all exposed surfaces will be monitored for dust generation, and appropriate dust suppression measures, such as watering, revegetation or application of environmentally acceptable dust suppressant chemicals will be implemented as required.	Maintains ultimate responsibility for commitment being met.	Applicable	Applicable. A CEMP will be developed specific to this stage in accordance with MCoA C3.	Applicable. A CEMP will be developed specific to this stage in accordance with MCoA C3.	Applicable. An OEMP will be developed specific to this stage in accordance with MCoA C4.	Applicable. An OEMP will be developed specific to this stage in accordance with MCoA C4.
AQ2	The access road connecting the Barrier Highway road verge to the project site will be constructed with packed gravel as required to minimise dust and soil impacts.	Maintains ultimate responsibility for commitment being met, in accordance with MCoA B31	Applicable	Applicable			
AQ3	Disturbed surfaces will be stabilised and restored as soon as possible using appropriate stabilisation and re-vegetation measures.	Maintains ultimate responsibility for commitment being met.	Applicable	Applicable	Applicable		

ID	Requirement	AGL Proponent	Stage 0 Enabling works	Stage 1 Solar plant construction	Stage 2 Connection works construction	Stage 3 Solar plant operation	Stage 4 Transmission line maintenance and operation
			Proponent and Contractors	Solar Plant Contractor	Connection Works Contractor	Solar Plant Operator	Connection Works Operator
AQ4	Construction vehicles/machinery will not be left running or idling when not in use.	Maintains ultimate responsibility for commitment being met.	Applicable	Applicable	Applicable		
AQ5	Construction plant will be fitted with appropriate emission controls and will be maintained to reduce exhaust emissions.	Maintains ultimate responsibility for commitment being met.	Applicable	Applicable	Applicable		
AQ6	Vehicular loads of spoil and other erodible material will be suitably covered during transport.	Maintains ultimate responsibility for commitment being met.	Applicable	Applicable	Applicable		
AQ7	No burning of vegetation or waste material will take place on the construction site.	Maintains ultimate responsibility for commitment being met.	Applicable	Applicable	Applicable		
	<b>Waste Management</b>						
W1	All works will be conducted in accordance with the waste	Maintains	Applicable	Applicable	Applicable		



ID	Requirement	AGL Proponent	Stage 0 Enabling works	Stage 1 Solar plant construction	Stage 2 Connection works construction	Stage 3 Solar plant operation	Stage 4 Transmission line maintenance and operation
			Proponent and Contractors	Solar Plant Contractor	Connection Works Contractor	Solar Plant Operator	Connection Works Operator
	management hierarchy established by the <i>Waste Avoidance and Resource Recovery Act 2001</i> .	ultimate responsibility for commitment being met.					
W2	Excavated spoil will be re-used on the project site for fill or landscaping, where possible.	Maintains ultimate responsibility for commitment being met.	Applicable	Applicable	Applicable		
W3	Native vegetation cleared for the project will be used in site restoration and landscaping or 'wind-rowed' along the edges of the transmission line easement, where possible.	Maintains ultimate responsibility for commitment being met.	Applicable	Applicable	Applicable		
W4	Excess spoil or green waste which cannot be reused on site will be transported to the Broken Hill City Council Recycling facility.	Maintains ultimate responsibility for commitment being met.	Applicable	Applicable	Applicable		
W5	Excess materials that are not re-usable or recyclable will be disposed of at the Broken Hill City Council Waste Depot.	Maintains ultimate responsibility for commitment	Applicable	Applicable	Applicable		

ID	Requirement	AGL Proponent	Stage 0 Enabling works	Stage 1 Solar plant construction	Stage 2 Connection works construction	Stage 3 Solar plant operation	Stage 4 Transmission line maintenance and operation
			Proponent and Contractors	Solar Plant Contractor	Connection Works Contractor	Solar Plant Operator	Connection Works Operator
		being met.					
W6	Transport of wastes to recycling or waste disposal facilities will be undertaken by an appropriately licensed waste transporter.	Maintains ultimate responsibility for commitment being met.	Applicable	Applicable	Applicable		
W7	Waste oils, greases and chemicals generated during construction will be stored in appropriately bunded areas prior to their removal for recycling or disposal.	Maintains ultimate responsibility for commitment being met.	Applicable	Applicable	Applicable		
W8	Soils contaminated through fuel or chemical spills will be excavated and transported to a licensed waste facility and the resulting excavations will be backfilled with clean soil.	Maintains ultimate responsibility for commitment being met.	Applicable	Applicable	Applicable		
W9	Invasive weeds will be collected in plastic bags to the extent possible and disposed of at a licensed green waste disposal facility or landfill.	Maintains ultimate responsibility for commitment being met.	Applicable	Applicable	Applicable		
W10	General wastes will be segregated into recyclable and non-recyclable streams through the provision of appropriate bins on	Maintains ultimate	Applicable	Applicable	Applicable		

ID	Requirement	AGL Proponent	Stage 0 Enabling works	Stage 1 Solar plant construction	Stage 2 Connection works construction	Stage 3 Solar plant operation	Stage 4 Transmission line maintenance and operation
			Proponent and Contractors	Solar Plant Contractor	Connection Works Contractor	Solar Plant Operator	Connection Works Operator
	the construction site.	responsibility for commitment being met.					