

Barn Hill Wind Farm and Battery Project

July 2025



AGL is developing the Barn Hill Wind Farm and Battery Project near Redhill in the Mid North of South Australia. The Project includes a wind farm with a capacity of up to 360 MW, a new transmission connection, and at a later stage, a 270 MW battery that can provide up to 4 hours of energy storage.

Project overview

Wind farm size	Up to 360 MW
Wind turbines	Up to 50 wind turbines
Turbine tip height	Up to 250 metres
Transmission line	A new 275kV transmission line
Battery*	Up to 270MW – 4 hours duration
Asset life	About 35 years
Development Approval*	31 January 2025
Final Investment Decision (wind farm)	Late 2025
Job creation	About 200 at peak of construction About 10-20 during operations

*While the Development Approval covers the wind farm, the battery, and associated infrastructure, the battery has a different development timeline. The Final Investment Decision for the wind farm and associated infrastructure is anticipated in late 2025. The investment decision for the battery is expected to come later. This staged approach is influenced by factors such as AGL's generation portfolio needs, capital deployment, procurement processes, critical equipment lead times and connection approval timelines.

Project Timeline



January 2025

Development Consent (wind farm, battery and associated infrastructure)

Late 2025

Final Investment Decision (wind farm and associated infrastructure)

Early 2026

Construction commences (wind farm and associated infrastructure)

Late 2028

Operations commence (wind farm and associated infrastructure)

Why AGL is developing this Project?

As Australia's largest energy supplier, AGL is driving the energy transition with flexible generation and storage, while maintaining reliable and affordable energy. The Barn Hill Wind Farm and Battery will deliver significant new capacity in coming years to achieve AGL's Climate Transition Action Plan target of having up to 5 GW of new generation and firming capacity in place before 2030 and a total of 12 GW in place by 2035.

Where will the Barn Hill Wind Farm be located?

The wind farm will be located approximately 4.5 km to the south-west of the township of Redhill, South Australia. It will sit across the Barunga Range, between the Snowtown Wind Farm and the Clements Gap Wind Farm. The Project footprint is within both Port Pirie Regional Council and the Wakefield Regional Council areas.

How will the Project connect to the grid?


A new transmission line will connect the wind farm to the grid via a 'cut in' to an existing Bungama-Blyth West 275kV transmission line, located about 7 kms east of the Project area in the vicinity of River and Perrins Roads. AGL has performed extensive network strength, loss and constraints modelling to determine a viable connection location.

How does AGL propose to manage impacts on the environment, landscape and people?

As part of the development approval process, AGL undertook several technical studies including:

- Ecology
- Aviation
- Shadow flicker
- Hydrology, geotechnical and surface water
- Soils and contamination
- Traffic and transport
- Visual amenity
- Waste
- Noise
- Hazards, risks and bushfire
- Social, community and economic
- Air quality
- Non-indigenous heritage
- Land use, planning, zoning and easements
- Electromagnetic interference
- Aboriginal Cultural Heritage

Control measures provided for in technical studies and feedback from relevant government authorities has informed the Project's Development Approval. This Approval includes several conditions that require consultation with relevant stakeholders, preparation of management plans, and obtaining secondary approvals and permits. AGL is addressing these conditions to ensure compliance.



A photomontage of the Project
looking east from Ingram Gap Road

What happens at the end of the Project?

At the end of the operational life of the wind turbines, they will either be decommissioned or re-furbished to enable them to continue to operate (subject to relevant approvals at the time). At the end of the Project lifespan, decommissioning and dismantling would be undertaken in accordance with a detailed Decommissioning and Rehabilitation Plan.

Procurement, jobs and skills

This Project will provide procurement, jobs and skills opportunities to the local community, local businesses and suppliers. The Project [webpage](#) provides a link for businesses to express an interest.

Community and stakeholder engagement

AGL continues to engage with landowners, local government, Traditional Custodians, stakeholders and the local community about the Project.

Community Information Sessions are held quarterly in Redhill and are advertised locally and through the Project's e-newsletter. People wishing to join the Project's e-news distribution list can email barnhillproject@agl.com.au.

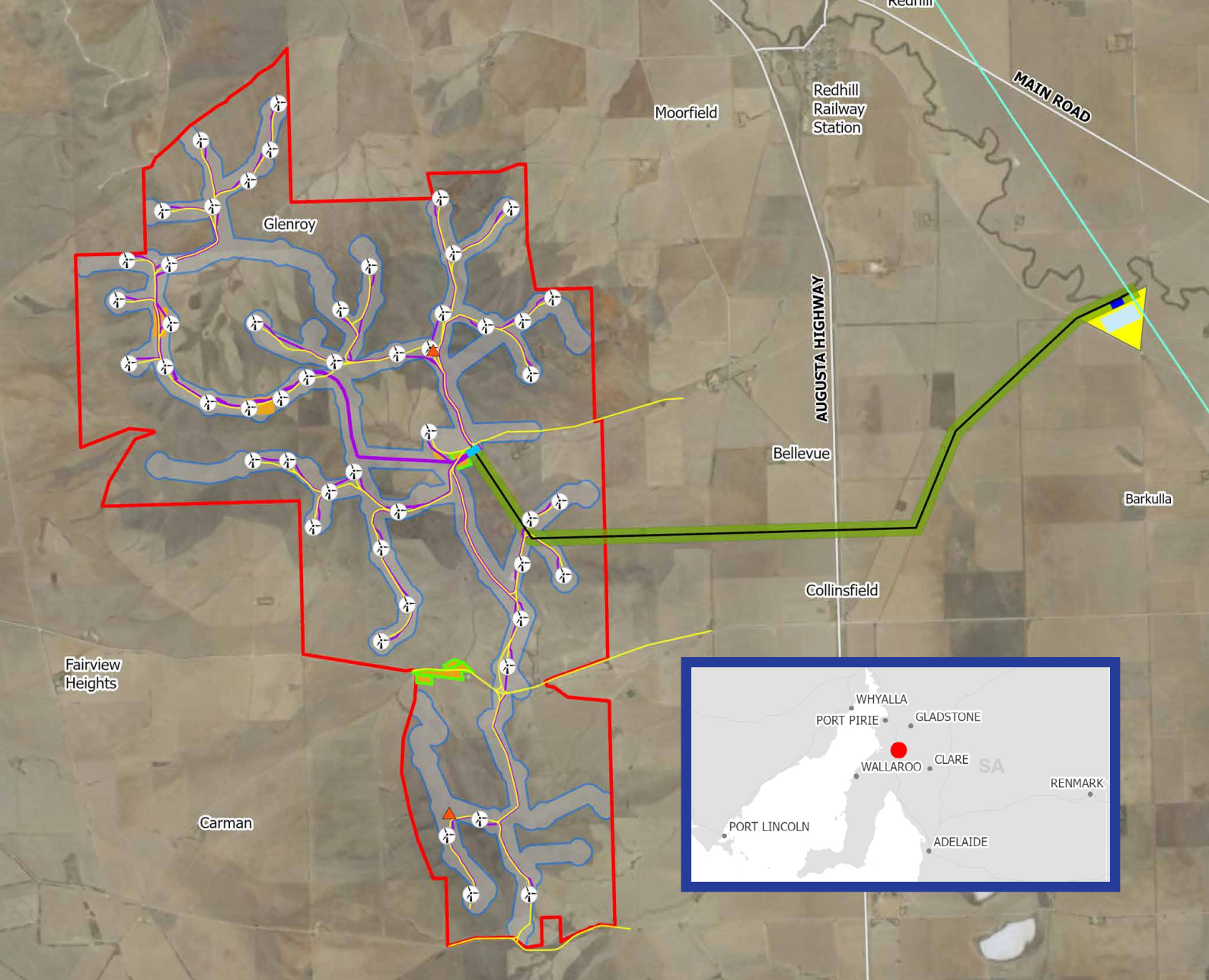
Barn Hill Benefit Sharing Program

As part of this Project, AGL will establish a Benefit Sharing Program that reflects the priorities, values, and aspirations of the mid north community, ensuring long-term positive impact from the wind farm development.

This Program will be shaped by the following principles:

- **Proportional to the project capacity:**
Benefit funds are proportional to project capacity and the level of change experienced by the community.
- **Reflecting local needs:**
Benefit sharing programs are developed in consultation with the community and tailored to the local context and community needs.
- **Transparency in managing the funds:**
Information on benefit sharing arrangements is publicly available, including details on the administration and distribution of funds.
- **Impactful legacy programs:**
Benefit sharing initiatives have a positive, lasting, and meaningful impact on the community and provide tangible social, environmental, and economic outcomes.
- **Flexibility to adapt:**
Programs will remain responsive and adaptable to evolving community needs and priorities over time.

We will continue to talk to local councils, stakeholders and seek wider community input in the coming months.



Legend

This is the approved layout as part of the Development Consent dated 31 January 2025, which is now subject to detailed design.

- | | | |
|-------------------------|---------------------------------------|--|
| Wind Turbine Generator | Bungama Transmission Line | Battery Energy Storage System and Switchyard |
| Monitoring Towers | Battery Energy Storage System | Construction Compound |
| Road | Switchyard | Concrete Batching Plants |
| Access Road | Substation | Wind Farm Boundary |
| Electrical Reticulation | Operations and Maintenance Facilities | Wind Farm Site Corridor (250m) |
| Transmission Line | | Transmission Line Corridor (200m) |

Visit our website
www.agl.com.au

Complaints and enquiries hotline
1800 039 600

Email
AGLCommunity@agl.com.au

agl Join the change