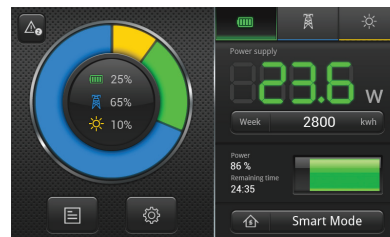


# PowerLegato®

## Residential Integrated Energy Storage System

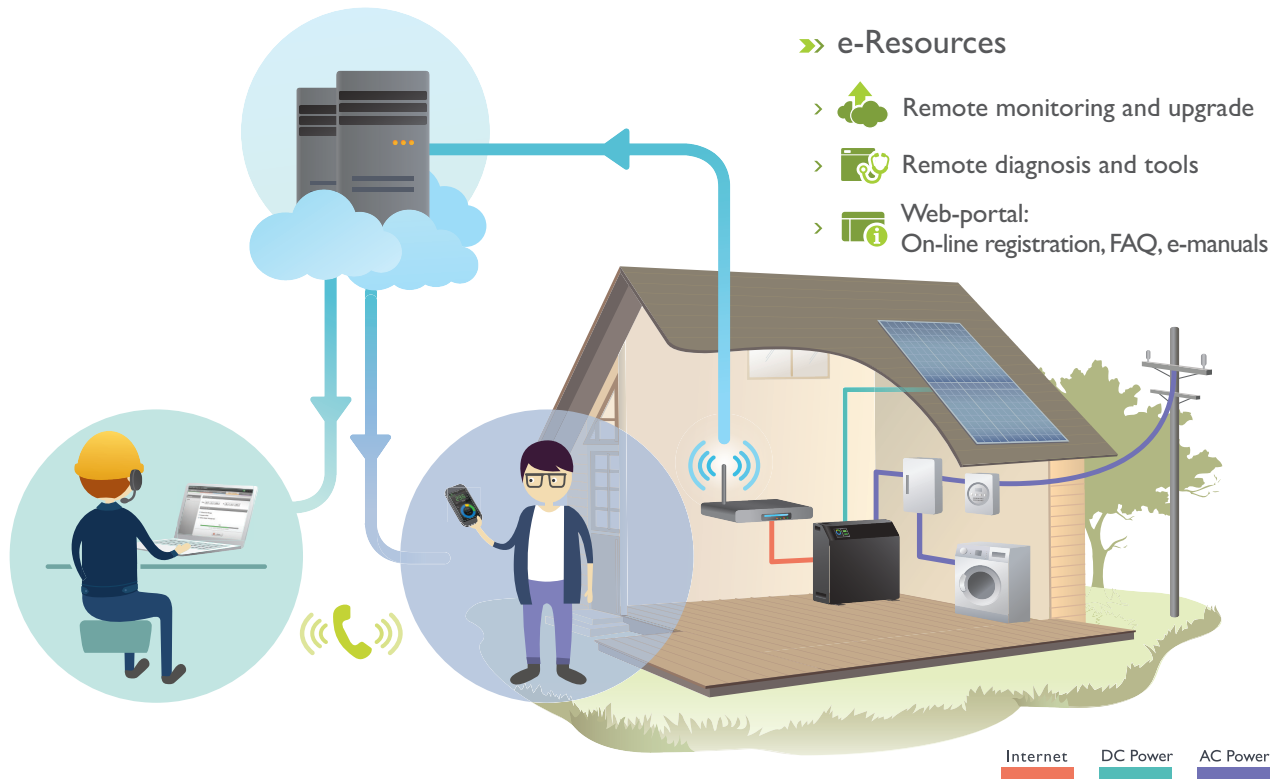
### »» EnergyOptimizer with Remote Access

- > ECO Mode
- > UPS Mode
- > Schedule Mode



EnergyOptimizer

# PowerLegato<sup>®</sup> Residential Integrated Energy Storage System



Load	TV	Washing Machine	LED x12	Refrigerator
Consumption	170 W	200 W	100 W	120 W
Power Supply	35 Hours	30 Hours	60 Hours	50 Hours



AU Optronics Corporation  
 No. 1, Li-Hsin Rd. 2, Hsinchu Science Park, Hsinchu 30078, Taiwan Tel: +886-3-500-8899 Email: ess@auo.com  
 © Copyright June 2014 AU Optronics Corp. All rights reserved. Information may change without notice.

## PowerLegato<sup>®</sup> 7200 / 4800 / 2400:

Input Variables (AC)		
Line Voltage	100, 110, 120	220, 230, 240 VAC
Acceptable Frequency	50 / 60 Hz	

Input Variables (DC)		
Max. Recommended PV Generator Power	2.7	4.5 kWp
MPPT Range	120-320	150-440 VDC
Full Load MPPT Range	150-320	250-440 VDC
PV Open Circuit Voltage	350	500 VDC
PV Short Circuit Current	20A	
Max. Input Current (150V / 250V)	18A	
Number Of MPPT	1	

Output Variables (AC)		
Rated Output	2 kW	3 kW
Peak Output (<30 sec.)	3 kW	4.5 kW
Output Voltage	100, 110, 120	220, 230, 240 VAC
Rated Current	20, 18, 16.6	13.6, 13, 12.5 A
Rated Frequency	50 / 60 Hz	
Power Factor	> 0.99	
Feed In Type	Single-phase	

Certificates And Approvals	
Standards Compliance	IEC62109 / EMC61000 / VDE-AR-N 4105 / VFR2014 VDE-AR-N 0126 / G83 / SBA S1101 / IEC62040 / JIS-C4411-2 / JIS-C6950 / AS4777 / AS3100 / CEI-021

Battery System	
Battery Cell Type	Lithium-ion battery (Made In Japan)
Battery Voltage	48V
Nominal Battery Capacity	7.2 / 4.8 / 2.4 kWh
Battery Protection	Over Temperature, Over Current, Over Voltage, Under Voltage

Mechanical Data	
HMI Display Area (LxW)	136.2mm x 72mm
HMI Display Interface	Capacitive Touch Panel
Operating Temperature Range	-20°C ~ +40°C
Connections For DC PV	MC4-compatible
Protection Class	IP30
Housing Material	SECC / PC+ABS
Dimension (W*D*H)	672 *326 (with stand 384) *682mm
Weight	140 / 111 / 81 kg

EnergyOptimizer Software	
Operation Modes	<b>Eco</b> - Money Saving Algorithm <b>UPS</b> - Off-line, Sine Wave, Transfer Time < 15 ms <b>Schedule</b> - 30 Minutes Interval, Weekly, Special-Day Schedule Settings

System Protection	Password Control, Fault Alarm, Ground Fault Monitoring, Battery Emergency Cutoff, Inverter Short, Over Load, Sensor Failure
-------------------	-----------------------------------------------------------------------------------------------------------------------------

Dashboard Information	Real Time PV Generation, Energy Retention, Load Consumption, Historical Data (hour, day, week, month)
-----------------------	-------------------------------------------------------------------------------------------------------

Internet Access	Ethernet
-----------------	----------