


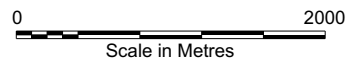
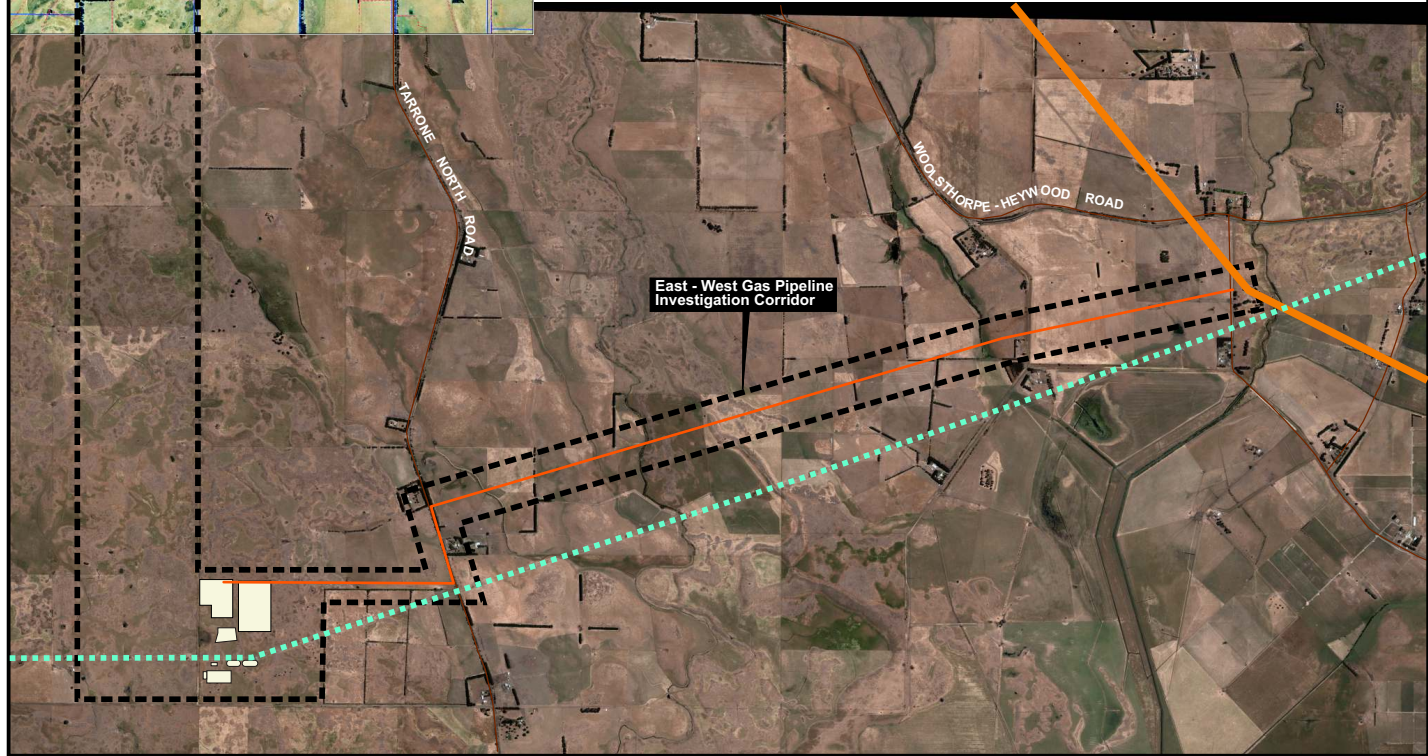



LEGEND:

-  Investigation boundary
-  SEA Gas Pipeline (approximate location)
-  Transmission line



This drawing is subject to COPYRIGHT. It remains the property of URS Australia Pty Ltd.

Client AGL ENERGY LTD	Project TARRONE POWER STATION	Title PIPELINE INVESTIGATION CORRIDORS
	Designed: JR Checked: Date: Oct. 2009 File No. Fig 2.cdr Drawn: LLB Approved: Status: Final Job No.: 43283491	Figure: 2 Rev. A A4