



Energy in
action.®



Silverton Wind Farm

Community Consultative Committee Meeting | 25 October 2012

Discussion about the recent Hallett Visit

- > 11 - 12 September 2012

- > Visited three operating wind farms:
 - » Hallett Hill Wind Farm
 - » Hallett Wind Farm
 - » Bluff Wind Farm

Project Update

- > **Expression of Interest:**

- > 9 responses received at end of August.
- > Analysis occurring now.
- > Shortlisting expected shortly.

- > **Owners Engineer:**

- > The OE helps prepare the technical part of the Request for Tender (including the Roads), and carries out the technical tender analysis and negotiation.
- > Prices received in early September and OE was appointed in mid September

Project Update – potential access road options for consideration



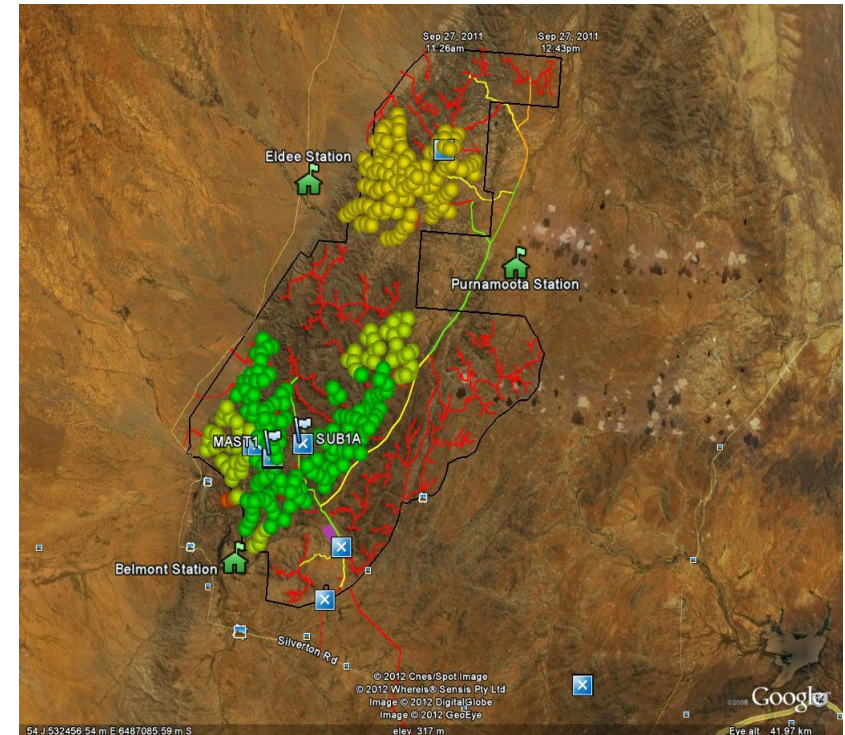
- > Preliminary investigations have been carried out
- > Extensive work still required to identify what options are feasible (including engagement with land owner and approving authorities)

Project Update – potential access road options for consideration

- > 3 options:
 - » Broken Hill Route: Silverton Rd via Broken Hill Town
 - » Short Bypass: to avoid Broken Hill Town
 - » Proposed New Bypass: to avoid Broken Hill Town and Silverton Rd
- > Indicative costs:
 - » Short bypass + upgrading the Silverton Rd - \$3m
 - » Proposed new bypass - \$7.1m
- > Expected number of oversize loads is around 3 to 5 / workday. They will travel at about 60 km/h and would take about 20 mins to travel between the short bypass and the Daydream mine road.

Process to determine the turbine locations

- > AGL understands some members of the community are concerned about the potential location of the turbines
- > Turbine locations have not yet been set
- > During Request for Tender Stage (November 2012 to March 2013 – approx) tenderers will be asked to:
 - » Give their optimum \$/ MWh solution.
 - » Give options for excluding certain turbine locations.



Process to determine the turbine locations

- › **What is your view on the turbine locations that we should ask for options to exclude?**

Example of another AGL wind farm- Macarthur, Victoria

- › Largest wind farm in Southern Hemisphere (by MW)
- › Total generating capacity of 420 MW
- › Consists of 140 turbines which are expected to be fully operational by Quarter 1, 2013
- › Macarthur Wind Farm commenced operation on Sunday 30 September 2012
- › 42 turbines currently in operation
- › AGL conducting noise monitoring beyond permit requirements to ensure noise targets are met from the start of operations



Community Commitments

As part of the project approval documentation, the following commitments were made.

- › Road upgrades and maintenance
- › Transmission line upgrades
- › Silverton Community Fund
- › Solar Silverton- offering of solar water heaters, solar power systems and energy efficiency packages for residences surrounding the site and in Silverton
- › Wherever possible, businesses from the local region will be involved in the construction
- › Signage erection to encourage tourism
- › Rectification of any television/radio transmission problems reasonably attributable to the project
- › Domestic size water tank upon request to all occupied residences within 10 km of the wind farm

These commitments will all be upheld by AGL as part of the project delivery.



Sourcing of sand, concrete aggregate and road-base materials

- > We are hoping to source the sand from the Wind Farm site.
- > For the road-base and concrete aggregate, we are working on “winning” this material on site.
- > Benefits of sourcing materials on site are:
 - » Reduced truck movements to site
 - » Reduced disruption
 - » Increased safety
- > It is likely that we will need to bring in some material from off site.



Community Update

- > **Any questions from the community?**

