

The logo consists of the text "Energy in action." in a blue sans-serif font, with a trademark symbol (TM) to the right of "action.". The text is positioned in the upper left corner of a large, light brown rounded rectangle. Below this rectangle are three smaller, overlapping light brown rectangles of varying sizes and orientations, creating a stepped effect. At the bottom right of the entire graphic is the AGL logo, which is a blue square containing a white stylized sun icon and the letters "AGL" in white.The AGL logo is a blue square with a white stylized sun icon to the left of the letters "AGL" in white.

# AGL UPSTREAM INVESTMENTS PTY LTD

## GLOUCESTER GAS PROJECT

**March 2017 Monitoring Report**

**Tiedman Irrigation Program  
EPL 20358**

Reporting Period: February 2017

AGL Upstream Investments Pty Ltd  
ABN 58 115 063 744  
Locked Bag 1837, St Leonards NSW 2065  
Level 22, 101 Miller Street, North Sydney NSW 2060  
Telephone: 02 9921 2999 Facsimile: 02 9921 2474  
Complaints Line (24 hours): 1300 799 716



## Foreword

<b>PREMISES</b>	Gloucester Coal Seam Gas Project Bucketts Way Gloucester NSW 2422
<b>LICENCE DETAILS</b>	<a href="#"><u>Environment Protection Licence 20358</u></a>
<b>LICENCEE</b>	AGL Upstream Investments Pty Limited (AGL)
<b>LICENCEE'S ADDRESS</b>	Locked Bag 1837, North Sydney, NSW 2060
<b>MONITORING DATE</b>	6, 7, 21 February 2017
<b>MONITORING BY</b>	EMM Consulting Pty Ltd (EMM), on behalf of AGL
<b>ANALYSIS BY</b>	ALS Laboratory, Smithfield (Work order: ES1702898)
<b>DATE AGL OBTAINED DATA</b>	7 March 2017
<b>REPORT DATE</b>	7 March 2017
<b>REPORT PREPARED BY</b>	James Duggleby, Principal Hydrogeologist, EMM, on behalf of AGL



## Introduction

On 4 February 2016 AGL Upstream Investments Pty Ltd (AGL) announced that the GGP will not proceed to final investment stage. AGL will relinquish Petroleum Exploration Licence (PEL) 285 to the NSW Government and are completing a comprehensive decommissioning and rehabilitation program for well sites and other infrastructure in the Gloucester region.

This Monitoring Report relates to the water monitoring activities specified in Part 5, Monitoring and Recording Conditions, of the Environment Protection Licence 20358. This report relates specifically to the monitoring surrounding the Tiedman Irrigation Program, and details monitoring results from a quarterly water sampling event at the Tiedman Irrigation Program (6, 7 February 2017) and monthly and fortnightly water sampling from the Tiedman Irrigation discharge monitoring point (6, 7 and 21 February 2017 respectively).

As per the Licence, the monitoring encompasses the monitoring points at the locations as shown in Table 1 and Figure 1. The specific analytes and frequency tested are shown in Table 2. The monitoring results for this reporting period are shown in Table 3, Table 4, and Table 5.

The monitoring points that are the subject of this report were part of the GGP groundwater monitoring network, as described in AGL's Water Management Plan for the Tiedman Irrigation Program (AGL, 2012a) and Soil Quality Monitoring and Management Program (AGL, 2012b)). Water monitoring results for the irrigation program are presented in a baseline water monitoring report (PB, 2013a) and six-monthly compliance reports (PB, 2013a, 2013b, 2014a, 2014b, 2015a, and 2015b).

The following sampling methods were used to obtain surface water and groundwater samples:

- Submersible 12V pump at the groundwater monitoring bores screened within relatively permeable geological materials: TMB01, TMB02 and TMB03. A minimum of three well volumes was purged prior to sampling.
- Submersible 12V pump at the seepage monitoring bores TMB04 and TMB05 which are screened within material of very low permeability. The physical parameters of the purged groundwater were initially tested, then the bores were purged dry and if any inflow was observed within 12 hours then physical parameters were tested again and a sample taken for analysis.
- Disposable bailer at the shallow perched soil water piezometers (with piezometers purged dry and if any inflow was observed within 12 hours then physical parameters were tested again and a sample taken for analysis). Note, all soil water piezometers were dry during the February 2017 sampling event.
- Micro-purge low-flow sample pump for groundwater monitoring bores S4MB01, TTMB02 and TCMB01 screened within material of relatively low permeability.
- Grab sample using a telescopic sampler for irrigation discharge point water samples.

EC and pH were monitored during purging to ensure that they had stabilised prior to sample collection. The water quality samples are analysed by an external NATA certified laboratory (ALS Environmental, Smithfield), in accordance with the EPA Approved Methods Publication "*Approved Methods for the Sampling and Analysis of Water Pollutants in New South Wales*" (EPA, 2004), with the exception of calcium, which underwent filtration rather than acid extraction as a preliminary treatment prior to analysis.

This report is prepared in accordance with the *Requirements for Publishing Pollution Monitoring Data* (EPA, 2012) (Publication Requirements).

The remaining water and land monitoring points in EPL 20358 will be reported in subsequent reports when the requirement for monitoring is triggered.

More information on the groundwater monitoring of the GGP is available on the project website: [agl.com.au/Gloucester](http://agl.com.au/Gloucester)

**Table 1: Water quality monitoring points: Irrigation Program (as per EPL 20358)**



EPA ID no.	Monitoring Point	Type of monitoring point	Easting (m)	Northing (m)
30	TMB04	Groundwater quality monitoring	402558.1	6448921.7
31	TMB05	Groundwater quality monitoring	402650.1	6448725.3
39	TMB01	Groundwater quality monitoring	401996.98	6449419.7
40	TMB02	Groundwater quality monitoring	401905.11	6449100.6
41	TMB03	Groundwater quality monitoring	401969.53	6448755
42	S4MB01	Groundwater quality monitoring	402581.88	6449409.7
43	TCMB01	Groundwater quality monitoring	402501.7	6448899
44	TTMB02	Groundwater quality monitoring	402699	6449358
45	SP1B	Soil water quality monitoring	402570.3	6449381.3
46	SP2B	Soil water quality monitoring	402444.2	6449100.1
47	SP4B	Soil water quality monitoring	402252	6449131.3
48	SP6B	Soil water quality monitoring	402103.5	6449178.6
49	SP7B	Soil water quality monitoring	402144.8	6449292.1
50	SP8B	Soil water quality monitoring	402159.1	6449454.8
51	SP9B	Soil water quality monitoring	402387.5	6449016.9
52	SP10B	Soil water quality monitoring	402344.2	6448840.6
91	Tiedman Dams Irrigation Discharge	Discharge point of blended water	Tiedman South Dam	

Coordinate reference system: Map Grid of Australia 1994

Figure 1: Location of groundwater and surface water quality monitoring points: Irrigation Program (as per EPL 20358)

**PARSONS  
BRINCKERHOFF**

**GLOUCESTER GAS PROJECT  
AGL UPSTREAM INVESTMENTS PTY LTD**

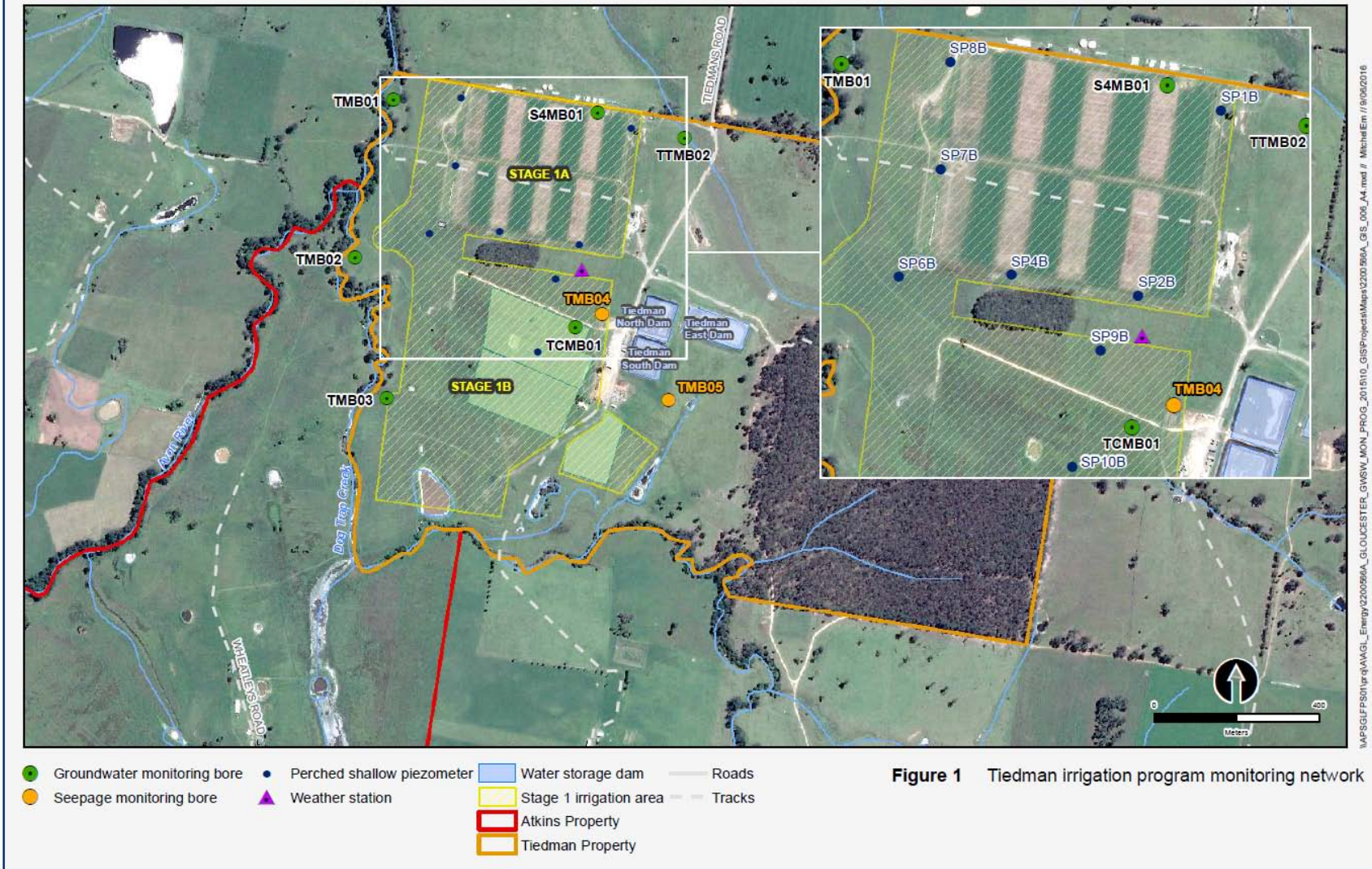




Table 2: Analytes monitored and frequency - monitoring points 30 – 52, as per the EPL 20358 version valid at the time of sampling (version 5 January 2017)

Analyte	Units of measure	Monitoring points							
		30,31		39,40,41,42,43,44		45,46,47,48,49,50,51, 52		91 <sup>b</sup>	
		Frequency	sampling method	Frequency	sampling method	Frequency	sampling method	Frequency	sampling method
Aluminium	milligrams per litre	Special Frequency 1	Grab sample	Quarterly	Grab sample	Quarterly	Grab sample	Monthly	Grab sample
Ammonia	milligrams per litre	Special Frequency 1	Grab sample	Quarterly	Grab sample	Quarterly	Grab sample	Monthly	Grab sample
Arsenic	milligrams per litre	Special Frequency 1	Grab sample	Quarterly	Grab sample	Quarterly	Grab sample	Monthly	Grab sample
Barium	milligrams per litre	Special Frequency 1	Grab sample	Quarterly	Grab sample	Quarterly	Grab sample	Monthly	Grab sample
Benzene	micrograms per litre	Special Frequency 1	Grab sample	Quarterly	Grab sample	Quarterly	Grab sample	Monthly	Grab sample
Beryllium	milligrams per litre	Special Frequency 1	Grab sample	Quarterly	Grab sample	Quarterly	Grab sample	Monthly	Grab sample
Bicarbonate	milligrams per litre	Special Frequency 1	Grab sample					Monthly	Grab sample
Boron	milligrams per litre	Special Frequency 1	Grab sample	Quarterly	Grab sample	Quarterly	Grab sample	Monthly	Grab sample
Cadmium	milligrams per litre	Special Frequency 1	Grab sample	Quarterly	Grab sample	Quarterly	Grab sample	Monthly	Grab sample
Calcium	milligrams per litre	Special Frequency 1	Grab sample	Quarterly	Grab sample	Quarterly	Grab sample	Monthly	Grab sample
Chloride	milligrams per litre	Special Frequency 1	Grab sample					Monthly	Grab sample
Chromium	milligrams per litre			Quarterly	Grab sample	Quarterly	Grab sample	Monthly	Grab sample
Cobalt	milligrams per litre	Special Frequency 1	Grab sample	Quarterly	Grab sample	Quarterly	Grab sample	Monthly	Grab sample
Copper	milligrams per litre	Special Frequency 1	Grab sample	Quarterly	Grab sample	Quarterly	Grab sample	Monthly	Grab sample
Dissolved oxygen	milligrams per litre	Special Frequency 1	Grab sample	Quarterly	Grab sample	Quarterly	Grab sample		
Electrical conductivity	microsiemens per centimetre	Special Frequency 1	Grab sample	Quarterly	Grab sample	Quarterly	Grab sample	Fortnightly	Probe
Ethyl benzene	micrograms per litre <sup>a</sup>	Special Frequency 1	Grab sample	Quarterly	Grab sample	Quarterly	Grab sample	Monthly	Grab sample
Fluoride	milligrams per litre							Monthly	Grab sample
Iron	milligrams per litre	Special Frequency 1	Grab sample	Quarterly	Grab sample	Quarterly	Grab sample	Monthly	Grab sample
Lead	milligrams per litre	Special Frequency 1	Grab sample	Quarterly	Grab sample	Quarterly	Grab sample	Monthly	Grab sample
Magnesium	milligrams per litre	Special Frequency 1	Grab sample	Quarterly	Grab sample	Quarterly	Grab sample	Monthly	Grab sample
Manganese	milligrams per litre	Special Frequency 1	Grab sample	Quarterly	Grab sample	Quarterly	Grab sample	Monthly	Grab sample
Mercury	milligrams per litre			Quarterly	Grab sample	Quarterly	Grab sample	Monthly	Grab sample
Molybdenum	milligrams per litre	Special Frequency 1	Grab sample	Quarterly	Grab sample	Quarterly	Grab sample	Monthly	Grab sample
Nickel	milligrams per litre	Special Frequency 1	Grab sample	Quarterly	Grab sample	Quarterly	Grab sample	Monthly	Grab sample
Nitrate	milligrams per litre	Special Frequency 1	Grab sample	Quarterly	Grab sample	Quarterly	Grab sample	Monthly	Grab sample
Nitrite	milligrams per litre	Special Frequency 1	Grab sample	Quarterly	Grab sample	Quarterly	Grab sample	Monthly	Grab sample
Nitrogen (total)	milligrams per litre							Monthly	Grab sample
pH	pH			Quarterly	Grab sample	Quarterly	Grab sample	Fortnightly	Probe
Phosphorus (total)	milligrams per litre	Special Frequency 1	Grab sample	Quarterly	Grab sample	Quarterly	Grab sample	Monthly	Grab sample
Potassium	milligrams per litre	Special Frequency 1	Grab sample	Quarterly	Grab sample	Quarterly	Grab sample	Monthly	Grab sample
Reactive Phosphorus	milligrams per litre	Special Frequency 1	Grab sample						
Redox potential	millivolts	Special Frequency 1	Grab sample	Quarterly	Grab sample	Quarterly	Grab sample	Fortnightly	Probe
Selenium	milligrams per litre	Special Frequency 1	Grab sample	Quarterly	Grab sample	Quarterly	Grab sample	Monthly	Grab sample
Silica	milligrams per litre			Quarterly	Grab sample	Quarterly	Grab sample	Monthly	Grab sample
Sodium	milligrams per litre	Special Frequency 1	Grab sample	Quarterly	Grab sample	Quarterly	Grab sample	Monthly	Grab sample
Sodium Adsorption Ratio	milligrams per litre <sup>c</sup>							Monthly	Grab sample <sup>c</sup>
Standing water level	meters (Australian Height Datum)	Special frequency 8	Special method 5	Special frequency 8	Special method 5	Quarterly	Special method 1		
Strontium (dissolved)	milligrams per litre	Special Frequency 1	Grab sample	Quarterly	Grab sample	Quarterly	Grab sample	Monthly	Grab sample
Sulfate	milligrams per litre	Special Frequency 1	Grab sample	Quarterly	Grab sample	Quarterly	Grab sample	Monthly	Grab sample
Temperature	degrees Celcius							Fortnightly	Probe
Toluene	micrograms per litre <sup>a</sup>	Special Frequency 1	Grab sample	Quarterly	Grab sample	Quarterly	Grab sample	Monthly	Grab sample
Total alkalinity	milligrams per litre			Quarterly	Grab sample			Monthly	Grab sample
Total dissolved solids	milligrams per litre	Special Frequency 1	Grab sample	Quarterly	Grab sample	Quarterly	Grab sample	Fortnightly	Probe
Total organic carbon	milligrams per litre	Special Frequency 1	Grab sample					Monthly	Grab sample
Total suspended solids	milligrams per litre							Monthly	Grab sample
Uranium	milligrams per litre	Special Frequency 1	Grab sample	Quarterly	Grab sample	Quarterly	Grab sample	Monthly	Grab sample
Vanadium	milligrams per litre	Special Frequency 1	Grab sample	Quarterly	Grab sample	Quarterly	Grab sample	Monthly	Grab sample
Xylene	micrograms per litre <sup>a</sup>	Special Frequency 1	Grab sample	Quarterly	Grab sample	Quarterly	Grab sample	Monthly	Grab sample
Zinc	milligrams per litre	Special Frequency 1	Grab sample	Quarterly	Grab sample	Quarterly	Grab sample	Monthly	Grab sample

Notes:

Special Frequency 1 - Quarterly if inflow within 12 hours of purging dry.

Special Frequency 8 - Every 6 hours. Note these monitoring points may form part of AGL's rehabilitation work, and should a monitoring point be rehabilitated, then monitoring will no longer be required from that point.

Special Method 1 - Manual dip

Special Method 4 - By calculation

Special Method 5 - Automated datalogger

Shaded grey - not required to be analysed

<sup>a</sup>EPL20358 (issued 5 January 2017) contains inconsistencies in the required Units of Measure for Toluene, Ethyl Benzene and Xylene. For consistency with laboratory data BTEX concentrations are reported here in micrograms per litre.

<sup>b</sup>Monitoring Point 91 is only required during periods when the Licensee is utilising the water irrigation or stock use.

<sup>c</sup> Unit of measure is incorrectly referenced as 'milligrams per litre' - should be 'ratio'. And sampling method is incorrectly assigned as 'grab sample' in EPL - should be 'Special Method 4 - By calculation'



Groundwater and surface water monitoring results

Table 3: February 2017 water monitoring results for monitoring points 30-44 and point 91

Monitoring points		30	31	39	40	41	42	43	44	91		
Location		TMB04	TMB05	TMB01	TMB02	TMB03	S4MB01	TCMB01	TTMB02	TID <sup>a</sup>		
Sampled date		7/02/2017	7/02/2017	7/02/2017	7/02/2017	6/02/2017	7/02/2017	7/02/2017	7/02/2017	6/02/2017 <sup>b</sup>	21/02/2017 <sup>c</sup>	
Date AGL obtained data		7/03/2017	7/03/2017	7/03/2017	7/03/2017	7/03/2017	7/03/2017	7/03/2017	7/03/2017	7/03/2017	7/03/2017	
Analyte	Units of measure	Limit of reporting										
Aluminium	mg/L	0.01	0.02	0.31	<0.01	<0.01	<0.01	<0.01	<0.01	<0.01	0.02	
Ammonia	mg/L	0.01	0.10	0.08	0.14	0.24	0.16	1.98	1.12	0.56	0.03	
Arsenic	mg/L	0.001	<0.001	<0.001	<0.001	0.003	0.003	<0.001	<0.001	<0.001	0.002	
Barium	mg/L	0.001	0.092	0.119	0.224	0.697	0.176	4.69	10.2	0.695	0.130	
Benzene	ug/L	1	<1	<1	<1	<1	<1	<1	<1	<1	<1	
Beryllium	mg/L	0.001	<0.001	0.002	<0.001	<0.001	<0.001	<0.001	<0.001	<0.001	<0.001	
Bicarbonate	mg/L	1	153	9							124	
Boron	mg/L	0.05	<0.05	<0.05	<0.05	<0.05	0.15	<0.05	<0.05	<0.05	0.09	
Cadmium	mg/L	0.0001	<0.0001	0.0019	<0.0001	<0.0001	<0.0001	<0.0001	<0.0001	<0.0001	<0.0001	
Calcium	mg/L	1	89	52	242	136	217	285	217	170	21	
Chloride	mg/L	0.1	2040	2330							102	
Chromium	mg/L	0.001			<0.001	<0.001	<0.001	<0.001	<0.001	<0.001	<0.001	
Cobalt	mg/L	0.001	0.066	0.253	<0.001	0.003	0.002	<0.001	<0.001	<0.001	<0.001	
Copper	mg/L	0.001	0.003	0.014	<0.001	<0.001	<0.001	<0.001	<0.001	<0.001	0.003	
Dissolved oxygen <sup>d</sup>	mg/L	0.01	0.63	3.89	1.00	0.76	0.89	0.89	1.14	2.27		
Electrical conductivity <sup>d</sup>	µS/cm	1	7470	7520	9100	4380	6080	4840	3100	2560	896	899
Ethyl benzene	ug/L	2	<2	<2	<2	<2	<2	<2	<2	<2	<2	<2
Fluoride	mg/L	0.1									0.2	
Iron	mg/L	0.05	9.69	8.07	2.9	5.19	2.95	0.44	2.42	2.34	<0.05	
Lead	mg/L	0.001	<0.001	<0.001	<0.001	<0.001	<0.001	<0.001	<0.001	<0.001	<0.001	
Magnesium	mg/L	1	215	245	248	96	140	53	70	54	6	
Manganese	mg/L	0.001	9.77	20.3	0.847	1.49	1.59	0.121	0.038	0.106	0.017	
Mercury	mg/L	0.0001			<0.0001	<0.0001	<0.0001	<0.0001	<0.0001	<0.0001	<0.0001	
Molybdenum	mg/L	0.001	0.001	0.001	<0.001	0.004	0.004	<0.001	0.002	<0.001	0.006	
Nickel	mg/L	0.001	0.031	0.122	<0.001	<0.001	<0.001	<0.001	<0.001	<0.001	<0.001	
Nitrate	mg/L	0.01	0.06	0.14	0.02	0.02	0.01	0.06	0.05	0.05	0.02	
Nitrite	mg/L	0.01	<0.01	0.01	<0.01	<0.01	<0.01	0.01	<0.01	<0.01	<0.01	
Nitrogen (total)	mg/L	0.1									3.7	
pH <sup>d</sup>	pH	0.01			6.33	6.16	6.71	6.77	6.57	6.63	7.48	6.83
Phosphorus (total)	mg/L	0.01	0.06	0.02	0.02	0.03	0.02	0.05	<0.01	0.30	0.23	
Potassium	mg/L	1	19	17	2	3	2	5	4	3	44	
Reactive Phosphorus	mg/L	0.01	<0.01	<0.01								
Redox potential <sup>d</sup>	mV	0.1	-83.3	-83.1	-88.8	-79.1	-72.0	-114.9	-85.0	-89.7	-38.5	-12.2
Selenium	mg/L	0.01	<0.01	<0.01	<0.01	<0.01	<0.01	<0.01	<0.01	<0.01	<0.01	
Silica	mg/L	0.05			37.90	33.80	30.50	25.30	19.50	33.40	7.95	
Sodium	mg/L	1	1040	1000	1220	583	816	599	266	252	130	
Sodium Adsorption Ratio	ratio	0.01									6.44	
Standing water level	m AHD	-	Refer to Table 5	Refer to Table 5	Refer to Table 5	Refer to Table 5	Refer to Table 5	Refer to Table 5	Refer to Table 5	Refer to Table 5		
Strontium (dissolved)	mg/L	0.001	0.941	0.814	6.78	3.16	5.80	26.7	15.3	3.22	0.280	
Sulfate	mg/L	1	590	195	74	51	180	9	<1	65	129	
Temperature <sup>d</sup>	°C	0.1									34.2	27.8
Toluene	ug/L	2	<2	<2	<2	<2	<2	<2	<2	<2	<2	<2
Total alkalinity	mg/L	1			613	211	510	441	308	398	124	
Total dissolved solids	mg/L	10	4410	4950	5730	2320	3680	2650	2290	1580	585 <sup>d</sup>	584 <sup>d</sup>
Total organic carbon	mg/L	1	4	4							28	
Total suspended solids	mg/L	5									50	
Uranium	mg/L	0.001	<0.001	<0.001	0.005	<0.001	0.006	<0.001	<0.001	<0.001	<0.001	
Vanadium	mg/L	0.01	<0.01	<0.01	<0.01	<0.01	<0.01	<0.01	<0.01	<0.01	<0.01	
Xylene	ug/L	2	<2	<2	<2	<2	<2	<2	<2	<2	<2	<2
Zinc	mg/L	0.005	0.137	0.945	0.007	0.005	<0.005	<0.005	0.006	0.005	0.020	

Key:

Shaded grey = not required to be analysed

<sup>a</sup>TID = Tiedman Irrigation Discharge monitoring point

<sup>b</sup>measured with calibrated field meter

<sup>c</sup>monthly sample

na - not analysed as no sample collected

<sup>d</sup>fortnightly sample



**Groundwater and surface water monitoring results**

**Table 4: February 2017 water monitoring results for monitoring points 45 – 52**

Analyte	Units of measure	Monitoring points	45	46	47	48	49	50	51	52
		Location	SP1B <sup>b</sup>	SP2B <sup>b</sup>	SP4B <sup>b</sup>	SP6B <sup>b</sup>	SP7B <sup>b</sup>	SP8B <sup>b</sup>	SP9B <sup>b</sup>	SP10B <sup>b</sup>
		Sampled date	7/02/2017	7/02/2017	7/02/2017	7/02/2017	7/02/2017	7/02/2017	7/02/2017	7/02/2017
		Date AGL obtained data	na	na	na	na	na	na	na	na
		Limit of reporting								
Aluminium	mg/L	0.01	na	na	na	na	na	na	na	na
Ammonia	mg/L	0.01	na	na	na	na	na	na	na	na
Arsenic	mg/L	0.001	na	na	na	na	na	na	na	na
Barium	mg/L	0.001	na	na	na	na	na	na	na	na
Benzene	ug/L	1	na	na	na	na	na	na	na	na
Beryllium	mg/L	0.001	na	na	na	na	na	na	na	na
Bicarbonate	mg/L	1								
Boron	mg/L	0.05	na	na	na	na	na	na	na	na
Cadmium	mg/L	0.0001	na	na	na	na	na	na	na	na
Calcium	mg/L	1	na	na	na	na	na	na	na	na
Chloride	mg/L	0.1								
Chromium	mg/L	0.001	na	na	na	na	na	na	na	na
Cobalt	mg/L	0.001	na	na	na	na	na	na	na	na
Copper	mg/L	0.001	na	na	na	na	na	na	na	na
Dissolved oxygen <sup>a</sup>	mg/L	0.01	na	na	na	na	na	na	na	na
Electrical conductivity <sup>a</sup>	µS/cm	1	na	na	na	na	na	na	na	na
Ethyl benzene	ug/L	2	na	na	na	na	na	na	na	na
Fluoride	mg/L	0.1								
Iron	mg/L	0.05	na	na	na	na	na	na	na	na
Lead	mg/L	0.001	na	na	na	na	na	na	na	na
Magnesium	mg/L	1	na	na	na	na	na	na	na	na
Manganese	mg/L	0.001	na	na	na	na	na	na	na	na
Mercury	mg/L	0.0001	na	na	na	na	na	na	na	na
Molybdenum	mg/L	0.001	na	na	na	na	na	na	na	na
Nickel	mg/L	0.001	na	na	na	na	na	na	na	na
Nitrate	mg/L	0.01	na	na	na	na	na	na	na	na
Nitrite	mg/L	0.01	na	na	na	na	na	na	na	na
Nitrogen (total)	mg/L	0.1								
pH <sup>a</sup>	pH	0.01	na	na	na	na	na	na	na	na
Phosphorus (total)	mg/L	0.01	na	na	na	na	na	na	na	na
Potassium	mg/L	1	na	na	na	na	na	na	na	na
Reactive Phosphorus	mg/L	0.01								
Redox potential <sup>a</sup>	mV	0.1	na	na	na	na	na	na	na	na
Selenium	mg/L	0.01	na	na	na	na	na	na	na	na
Silica	mg/L	0.05	na	na	na	na	na	na	na	na
Sodium	mg/L	1	na	na	na	na	na	na	na	na
Sodium Adsorption Ratio	ratio	0.01								
Standing water level	m AHD	-	na	na	na	na	na	na	na	na
Strontium (dissolved)	mg/L	0.001	na	na	na	na	na	na	na	na
Sulfate	mg/L	1	na	na	na	na	na	na	na	na
Temperature <sup>a</sup>	°C	0.1								
Toluene	ug/L	2	na	na	na	na	na	na	na	na
Total alkalinity	mg/L	1								
Total dissolved solids	mg/L	10	na	na	na	na	na	na	na	na
Total organic carbon	mg/L	1								
Total suspended solids	mg/L	5								
Uranium	mg/L	0.001	na	na	na	na	na	na	na	na
Vanadium	mg/L	0.01	na	na	na	na	na	na	na	na
Xylene	ug/L	2	na	na	na	na	na	na	na	na
Zinc	mg/L	0.005	na	na	na	na	na	na	na	na

Shaded grey = not required to be analysed

<sup>a</sup> measured with calibrated field meter

<sup>b</sup> No water present at this location at the time of sampling

na - not analysed as no sample collected





**Table 5: Continuous water level monitoring results for monitoring points 30, 31, 39 - 44 for the period 4 November 2016 – 7 February 2017**

Monitoring point	30	31	39	40	41	42	43	44
Location	TMB04	TMB05	TMB01	TMB02	TMB03	S4MB01	TCMB01	TTMB02
Data type	Standing water level							
Units	mAHD							
Data date range	4/11/2016 - 6/2/2017	3/11/2016 - 6/2/2017	3/11/2016 – 7/2/2017		3/11/2016 - 6/2/2017	3/11/2016 - 7/2/2017		4/11/2016 - 7/2/2017
Date data downloaded	6/2/2017	6/2/2017	7/2/2017		6/2/2017	7/2/2017		7/2/2017
Date data supplied to AGL	7/3/2016							
Monitoring frequency required by EPL 20358	Every 6 hours	Every 6 hours	Every 6 hours	Every 6 hours	Every 6 hours	Every 6 hours	Every 6 hours	Every 6 hours
Actual monitoring frequency	Every 6 hours	Every 6 hours	Every 6 hours	Every 6 hours	Every 6 hours	Every 6 hours	Every 6 hours	Every 6 hours
No. of times measured during monitoring period	377	381	383	383	380	383	383	380
Min. value	112.62	110.21	102.13	102.54	103.58	113.03	113.80	114.03
Mean value	113.32	113.24	102.31	102.68	103.73	113.22	113.85	114.07
Median value	113.33	113.29	102.28	102.67	103.73	113.22	113.85	114.07
Max. value	113.38	113.36	102.65	102.86	103.86	113.31	113.90	114.15

## References

AGL, 2012a. Water Management Plan for the Tiedman Irrigation Program AGL.

AGL, 2012b. Soil Quality Monitoring and Management Program.

Environment Protection Authority (EPA), 2004. Approved Methods for the Sampling and Analysis of Water Pollutants in New South Wales, The Department of Environment and Conservation, Sydney, Australia. Available online: <http://www.environment.nsw.gov.au/resources/water/approvedmethods-water.pdf>

Parsons Brinckerhoff (PB) 2012. Phase 2 Groundwater Investigations – Stage 1 Gas Field Development Area, Gloucester Gas Project. Report dated January 2012, PR\_5630. Available online: <https://www.agl.com.au/-/media/AGL/About-AGL/Documents/How-We-Source-Energy/Gloucester->



[Document-Repository/Water-Reports/20120111Phase-2-Groundwater-Investigations--Stage-1-Gas-Field-Development-Area-Appendices-EP.pdf](#)

Parsons Brinckerhoff (PB) 2013a. Gloucester Gas Project – Tiedman Irrigation Trial Baseline Water Monitoring Program. Report dated January 2013, 2162406D PR\_6306. Report prepared by PB for AGL Upstream Investments Pty Ltd.

Parsons Brinckerhoff (PB) 2013b. Tiedman Irrigation Trial – August 2013 Water Compliance Report, Gloucester Gas Project. Report dated August 2013, 2162406F-WAT-RTP-7408 RevC. Report prepared by PB for AGL Upstream Investments Pty Ltd.

Parsons Brinckerhoff (PB) 2014a. Tiedman Irrigation Program – Water Compliance Report for the Period 1 July to 31 December 2013, Gloucester Gas Project. Report dated January 2014, 2162406F-WAT-RPT-7674 RevB. Report prepared by PB for AGL Upstream Investments Pty Ltd.

Parsons Brinckerhoff (PB) 2014b. Tiedman Irrigation Program – Water Compliance Report for the Period 1 January to 4 July 2014, Gloucester Gas Project. Report dated August 2014, 2162406F-WAT-RPT-7674 001 RevD. Report prepared by PB for AGL Upstream Investments Pty Ltd.

Parsons Brinckerhoff (PB) 2015a. Tiedman Irrigation Program – Water Compliance Report for the Period 1 January to 3- June 2015, Gloucester Gas Project. Report dated 13 August 2015, 2268517A-WAT-RPT-001 Rev C. Report prepared by PB for AGL Upstream Investments Pty Ltd.

Parsons Brinckerhoff (PB) 2015b. Tiedman Irrigation Program – Water Compliance Report for the Period 5 July – 31 December 2014, Gloucester Gas Project. Report dated February 2015, 2268517B-WAT-RPT-001 Rev D. Report prepared by PB for AGL Upstream Investments Pty Ltd.

The State of NSW and Environment Protection Authority (EPA), 2012. Requirements for publishing pollution monitoring data. Environment Protection Authority, Sydney, Australia. Available online: <http://www.epa.nsw.gov.au/resources/licensing/130742reqpubpmdata.pdf>